

Anycubic Kobra 2

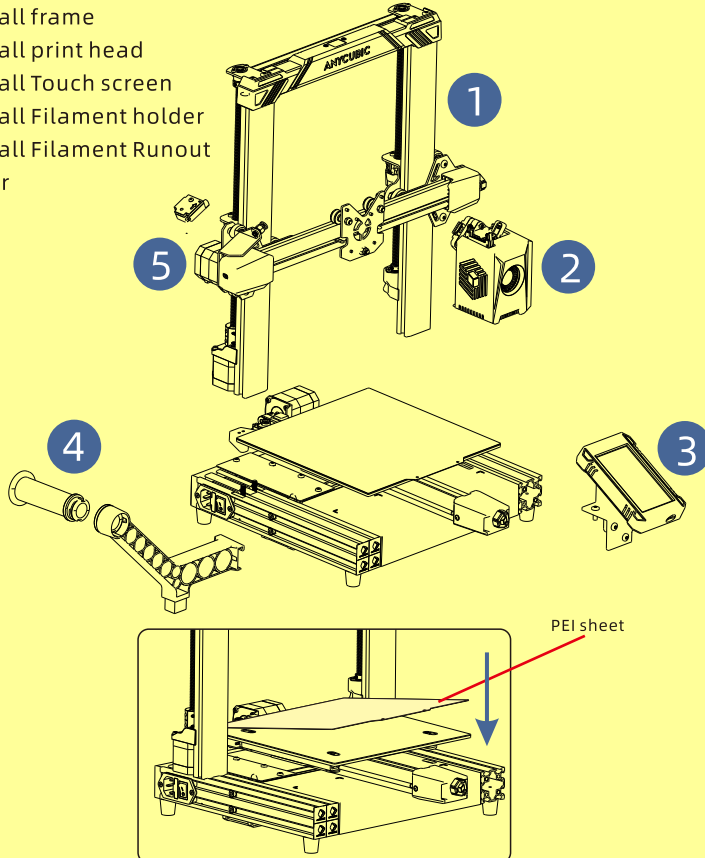
Quick Start Guide



1. Machine Installation

The TF card of the machine comes with an instruction video.

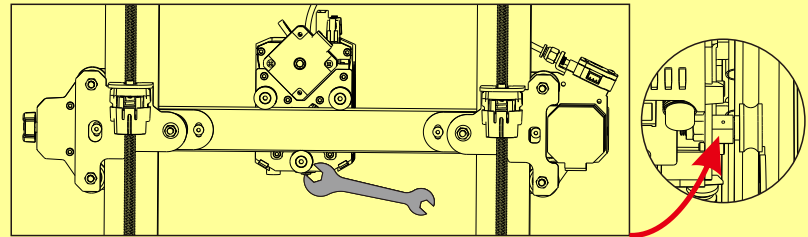
- 1) Install frame
- 2) Install print head
- 3) Install Touch screen
- 4) Install Filament holder
- 5) Install Filament Runout Sensor



2. Check Before Use

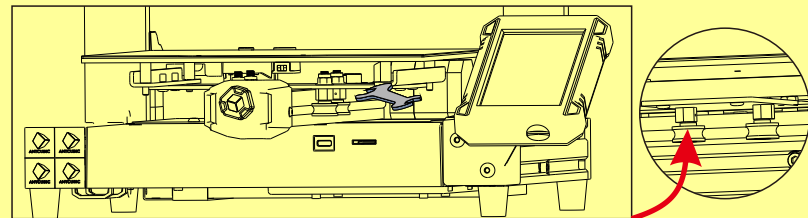
1) Pulley elastic adjustment

Check if the print head is shaking. If it is, adjust the hexagonal isolation column located underneath the print head until it slides smoothly and without shaking.



Print head

Check if the print bed is shaking. If it is, adjust the hexagonal isolation column located underneath the print bed until it slides smoothly and without shaking.

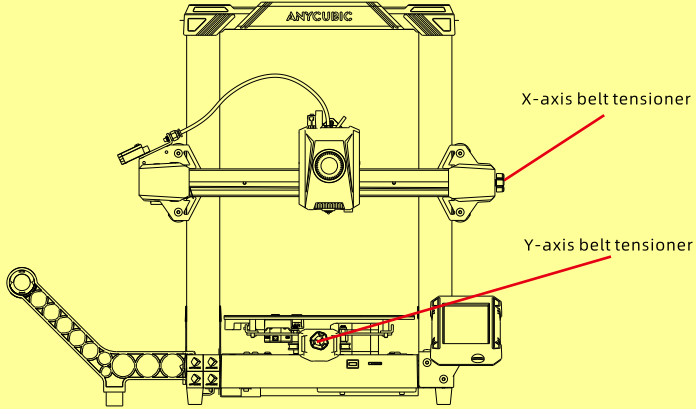


Platform

The gantry's pulleys on both sides also have corresponding eccentric isolation columns that can be adjusted.

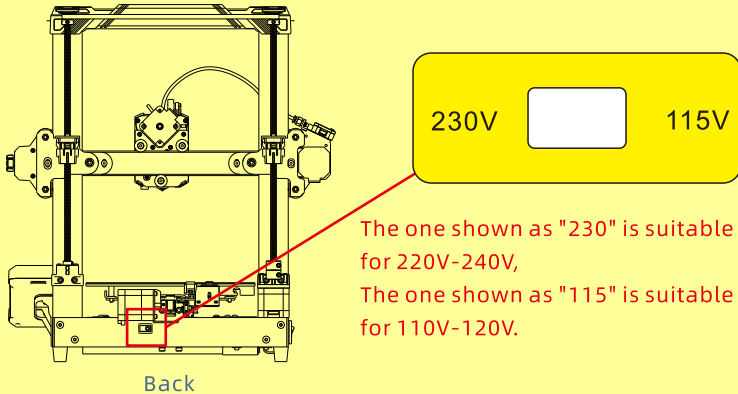
2)Belts

Please manually move the print head and print platform. If there is any difficulty or abnormal noise during the movement, adjust the tensioner to ensure smooth sliding of the print head or platform.



3)Voltage adjustment

Please confirm whether the input mode of the voltage of the power box is correct, and adjust to the appropriate voltage level according to the local voltage usage.



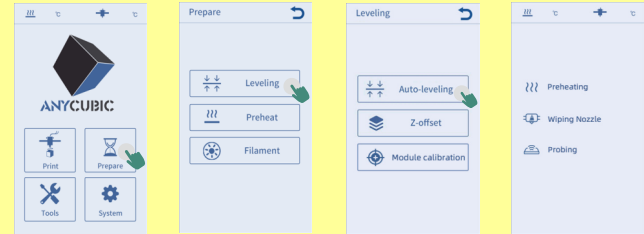
The one shown as "230" is suitable for 220V-240V,
The one shown as "115" is suitable for 110V-120V.



M02030290

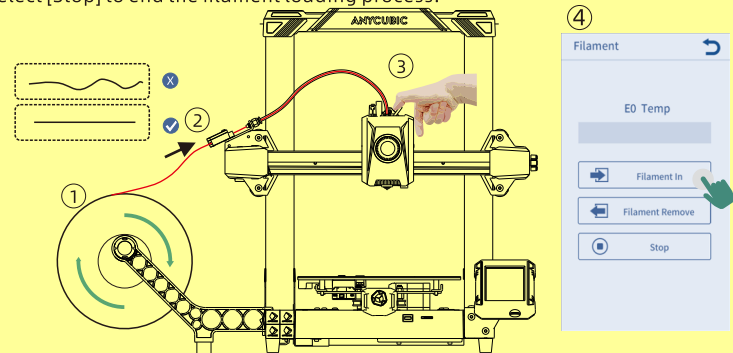
3.Leveling

- 1)Connect the printer to a power outlet with the power cable, then power on the printer.
- 2)Click on the screen [Prepare] - [Leveling] - [Auto Leveling]. Wait for the machine to be leveled.



4.Loading Filament

- 1)Click on [Prepare]-[Filament]-[Filament In]. The heating interface will appear, click "OK".
- 2)Click [Filament In] again, wait until the filament starts to extrude from the nozzle, and select [Stop] to end the filament loading process.



Note: Before inserting the filament into the extruder, make sure the end of the filament has been straightened.

5.Start printing

- 1)Insert the TF card into the card slot of the printer.
- 2)Click [Print] on the main menu and select the model file.
- 3)When the nozzle and heating bed reach a preset temperature, the machine begins to print.