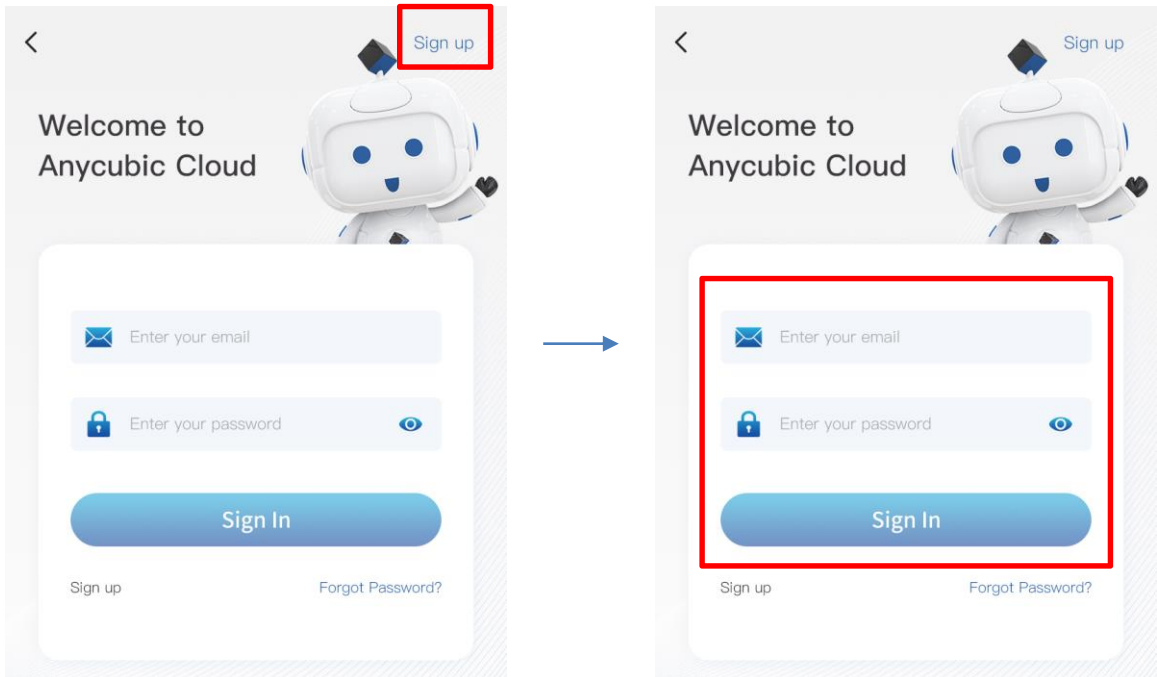


# Anycubic Cloud User Manual

## 1. Sign up/log in

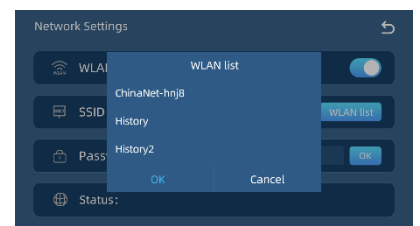
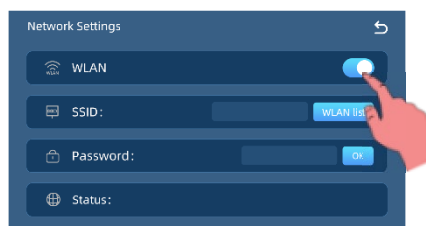
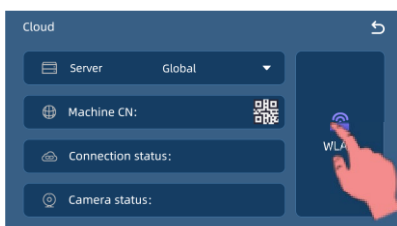
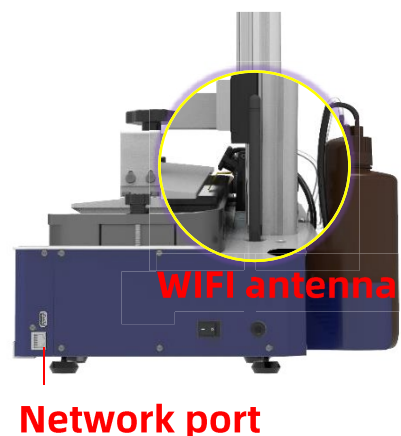
Click Sign up on the top right of Anycubic Cloud and follow the guidance. Then log in.



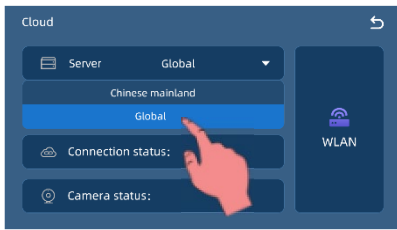
## 2 . Add 3D Printers

### (1) Connect 3D printer (two ways shown below)

- Connect with Ethernet: Plug one end of the network cable into the network port.
- Connect with WIFI: Install the antenna first. Click "Cloud"→"WLAN", turn on to search for available network and select one. Then, enter the password and click OK to connect.



Then, select "Global" server in Cloud interface on the printer.




Select the corresponding server

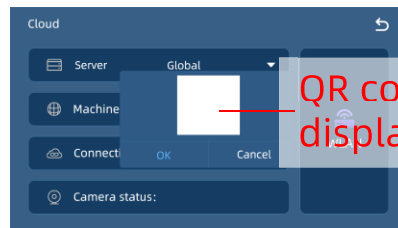
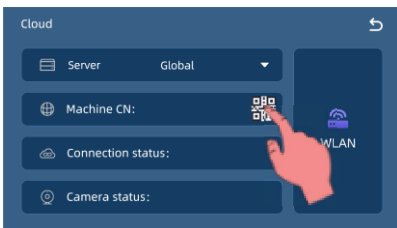


Click OK to switch server

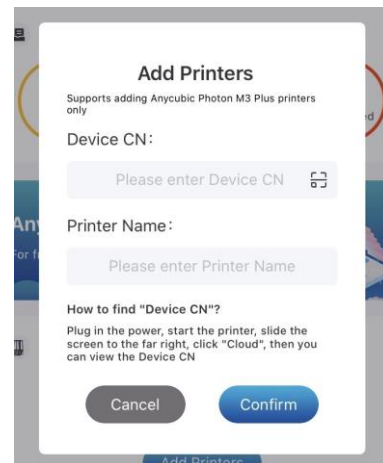
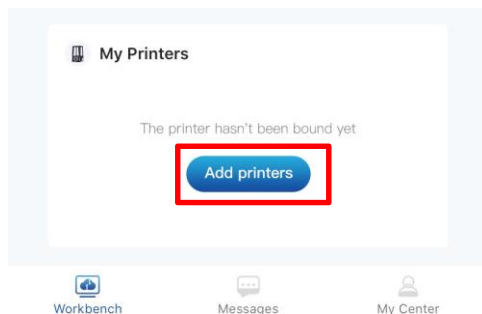
## (2) Add printer in Anycubic Cloud

To check machine CN, turn to Cloud interface after the printer is connected to network.

Open workbench-3D printers in Anycubic Cloud, click "Add printers" and then enter machine CN. Or, click "  " icon and then scan QR code with your smart phone. Lastly, confirm to add printers.



Check machine CN and its QR code on your 3D printer



Add printers in Anycubic Cloud

Notice:

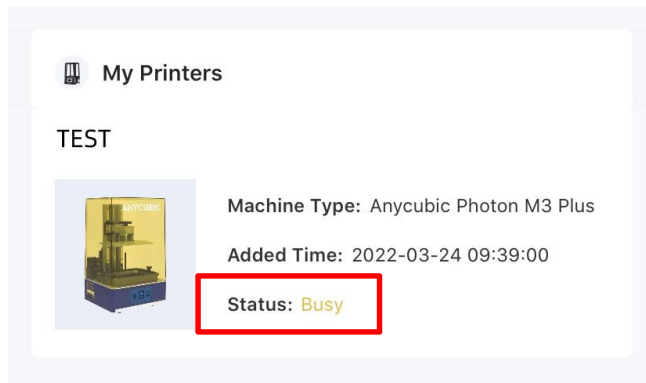
- ①Currently, only Anycubic Photon M3 Plus can be added.
- ②An account can add several printers, but a printer can only be added to one account.

### (3) Printer information

The detailed information of your 3D printer is shown in workbench-3D printers.

There are three status of printers:

- Free: There is no printing task.
- Busy: It is printing.
- Offline: The printer is not connected to Anycubic Cloud. Please check its network.



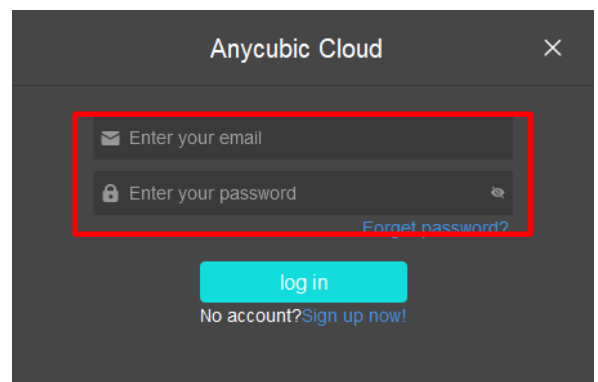
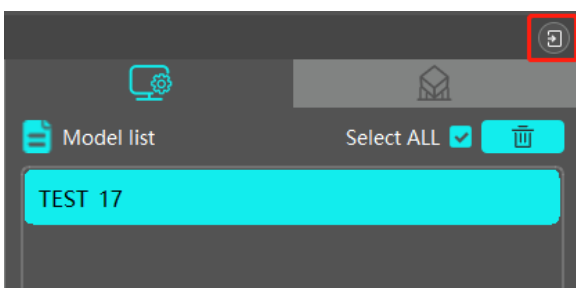
### 3. Remote control

#### (1) Start printing

Firstly, import print files from Anycubic Photon Workshop.

Log in your Anycubic Cloud account in the software and select global server. When setting is finished, click "slice" button to export slice file.

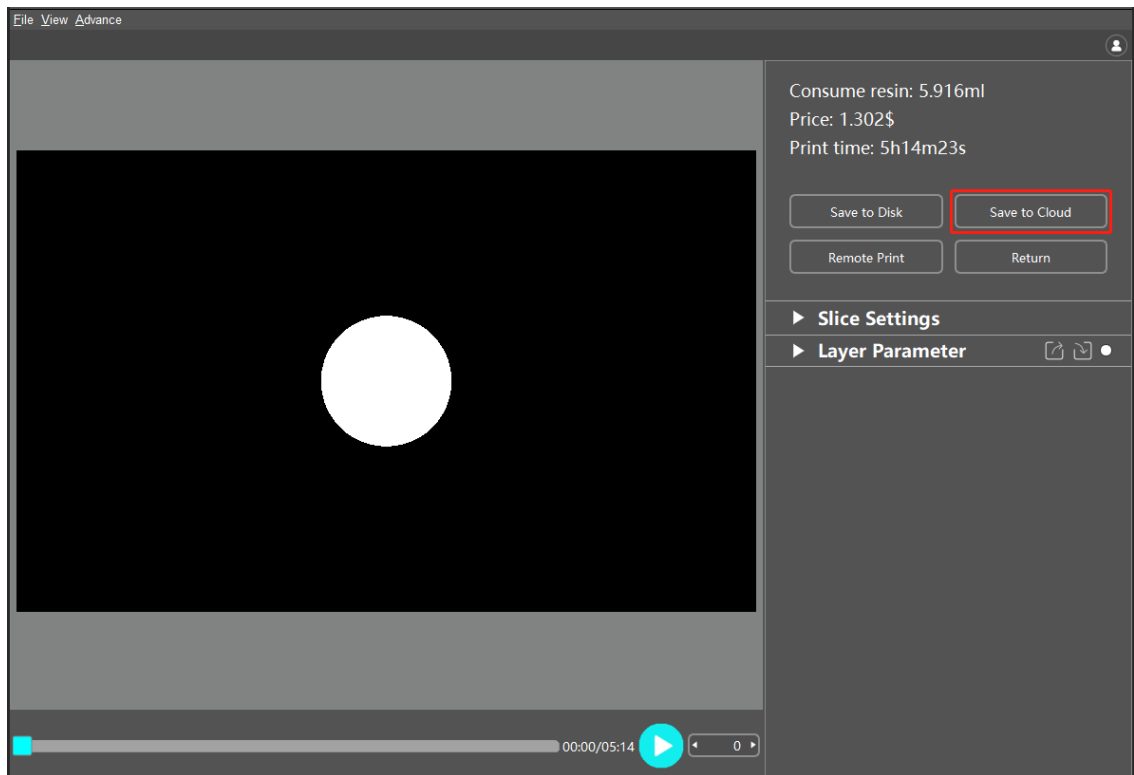
Click to enter in log in interface



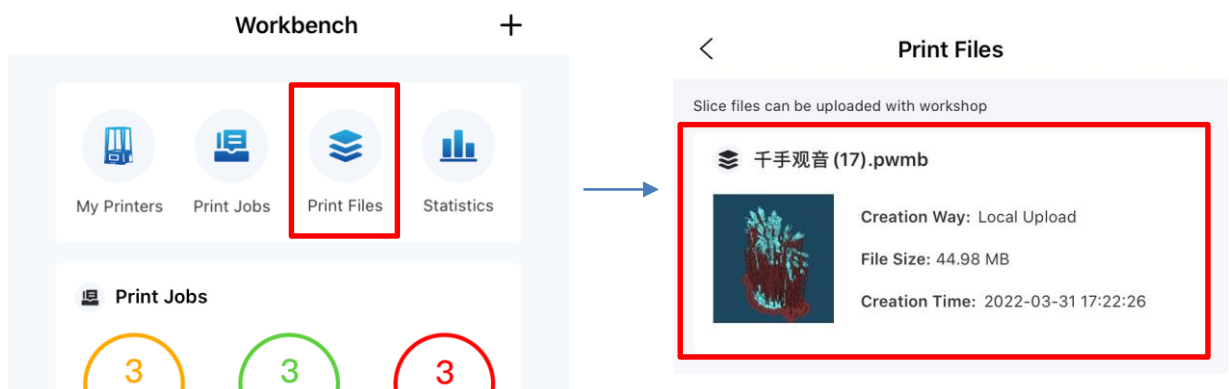
Fill in your email and password

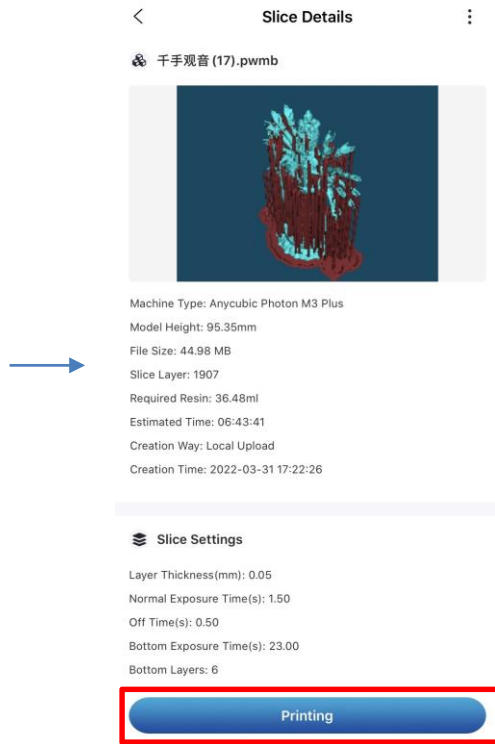
In the printing preview interface, click “Save to Cloud” to export the print file to Anycubic Cloud.

If you choose remote print, please add printer first . Meanwhile, the print file will be saved to Anycubic Cloud and its job can be check in it.



When the file is saved to Anycubic Cloud, open Workbench-Print files and select it. In slice details interface, click “Printing” and choose a free printer to start printing. **Only one printer can be chosen to print.**





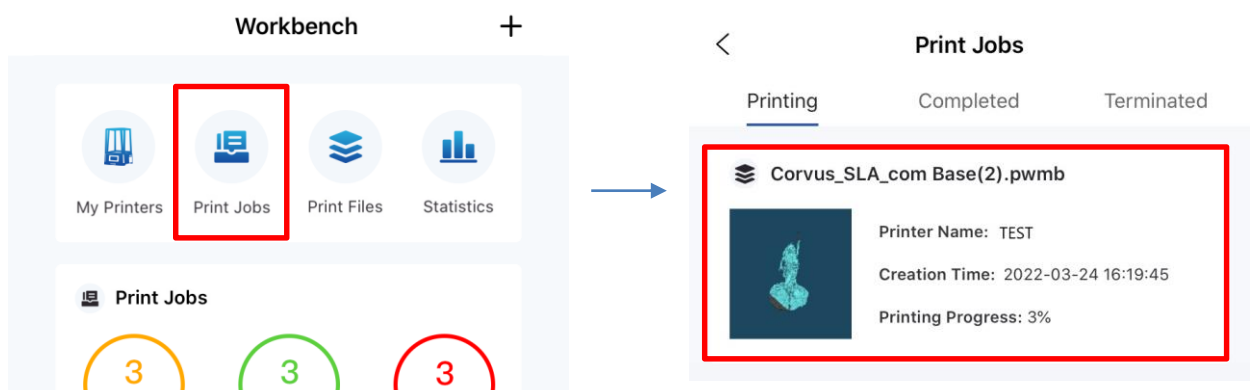
When the printing is finished, the notification will be sent. Then, you can go back to your printer in time to treat the models.

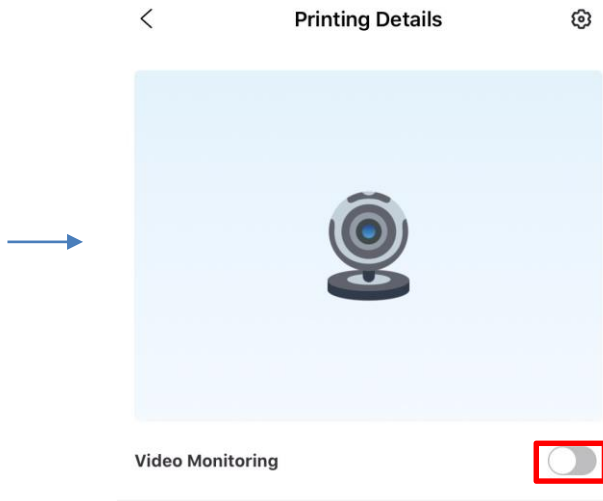
## (2) Real-time monitor

Open Printing jobs-Printing, click one job to check its details.

In printing details, switch on the camera to monitor the printing.

The camera must be installed first and its angle need to adjust manually. Please ensure the camera is ready before the monitor.





Switch on/off the camera

If there are problems with camera display, check the camera status on printer's Cloud interface and the connection of camera wire. When the problem cannot be solved, please contact our technical support.

### (3) Set the print parameters

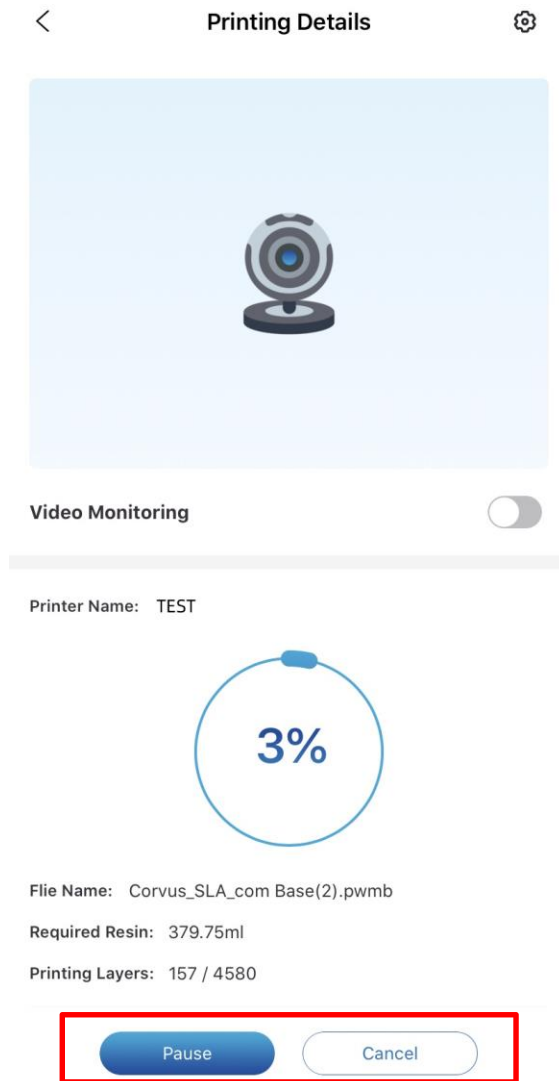
Click the gear icon on top right corner to modify print parameters according to personal requirements. At last, click "Save" to finish.



#### (4) Pause/stop printing

If it is needed, click “Pause” in printing details to pause the print. Then, click “resume” to continue.

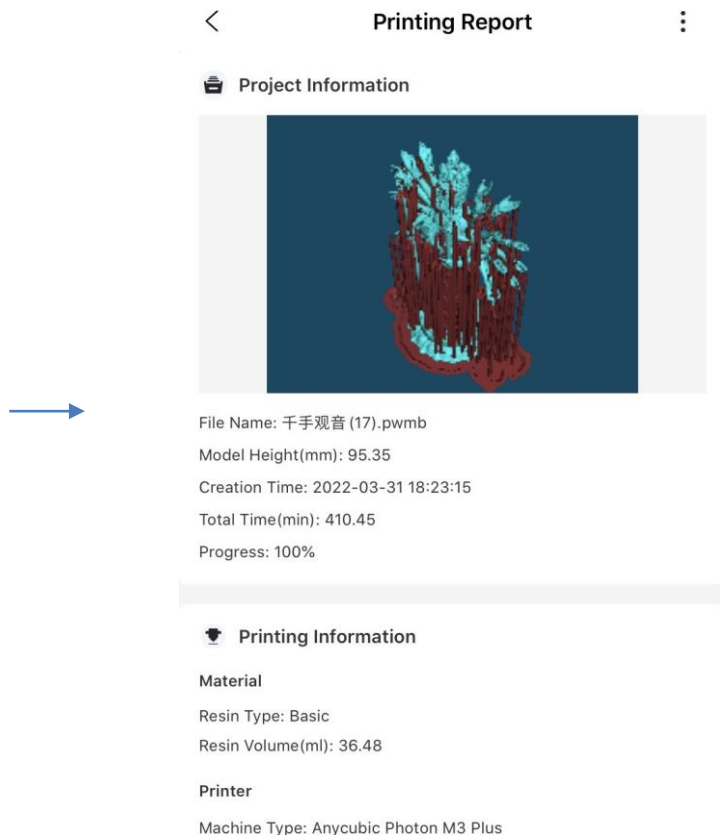
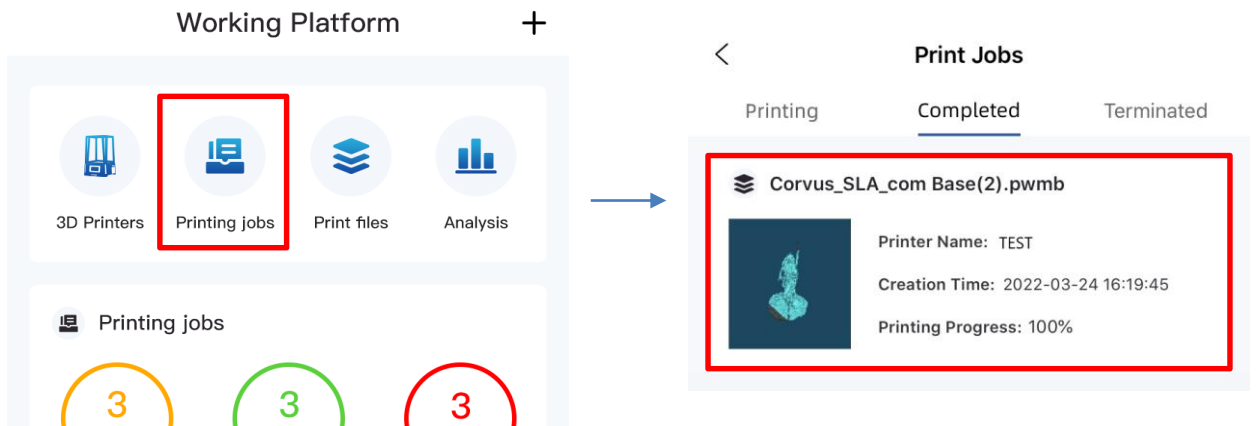
Click “Cancel” can stop the printing.



## 4. Printing reports and analysis

### (1) Printing report

Click a completed print job in Workbench-Printing jobs-Completed to see its printing report, including its printing time, model height, printing parameters, resin volume and so on





## (2) Analysis

Open workbench-analysis to find the calculation of printing times and resin volume for further analysis on personal printing condition.

