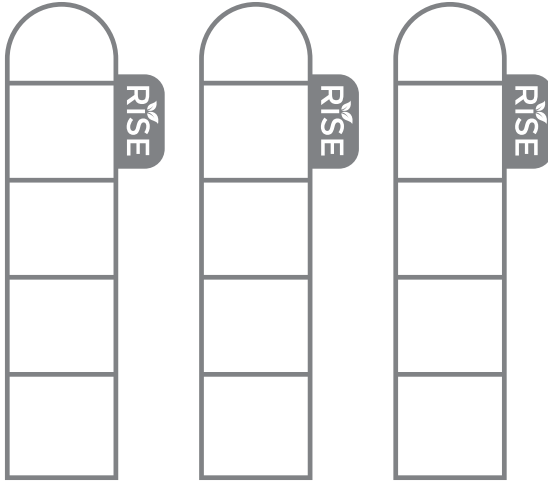


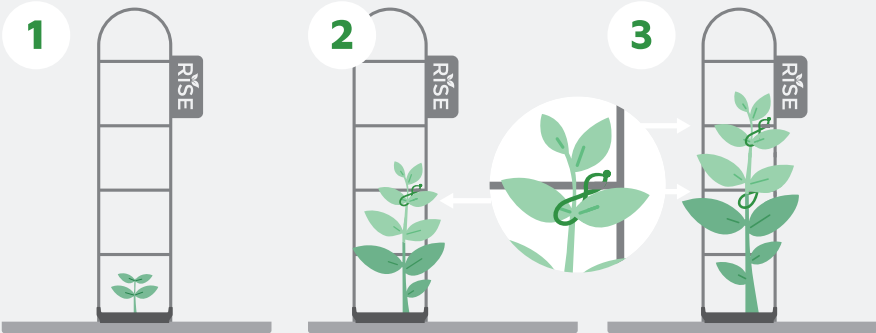
What's in My Box?



3 RISE GARDEN PLANT SUPPORTS



18 PLANT TIES



1 Add your Plant Support to one of your tall plants by sliding its feet under the **Net Cup** so it is secured between your **Net Cup** and your **Tray Lid**.

- **Tall plants that need a Plant Support:**



Tomatoes Peppers Eggplant

2 As your plant grows you can start to add Plant Ties to your plant. Clip them to a branch and then to a rung on your plant support. Place the ring around a stem, then clip the ends of your tie together on a rung, forming a figure 8.

Be sure to be gentle with your plant so as to not cut the stem.

3 Continue to clip your plant as it grows. Your goal is to clip your plant to the rungs of your plant support to keep your plant from flopping over. When your plant is upright, it will block less light from the surrounding plants and help keep them more organized.

A note about our packaging: This is the first time you are seeing plastic. We receive this product from our manufacturer this way but choose to reuse the bag in order to limit our own waste. However, this plastic is biodegradable with the use of "Controlled-Life" technology. This means your bag will break down over time as it interacts with sunlight, air, and water. It is also HDPE recyclable. We recommend only composting with commercial compost services as backyard composts will not break down your bag fast enough. As with all of our packaging products, please reuse and recycle in order to limit waste.