



Protect your team members and customers by using interior and exterior signage to help communicate the operational changes of your business due to COVID-19.

We have created short-term and long-term COVID-19 and safety signage solutions in addition to our more traditional signage. This Lookbook includes a sampling of Social Distancing, Health and Safety, Directional, and Entrance signs and products to meet the special need for germ prevention.

GRAPHIC PROPOSALS - OFFICE

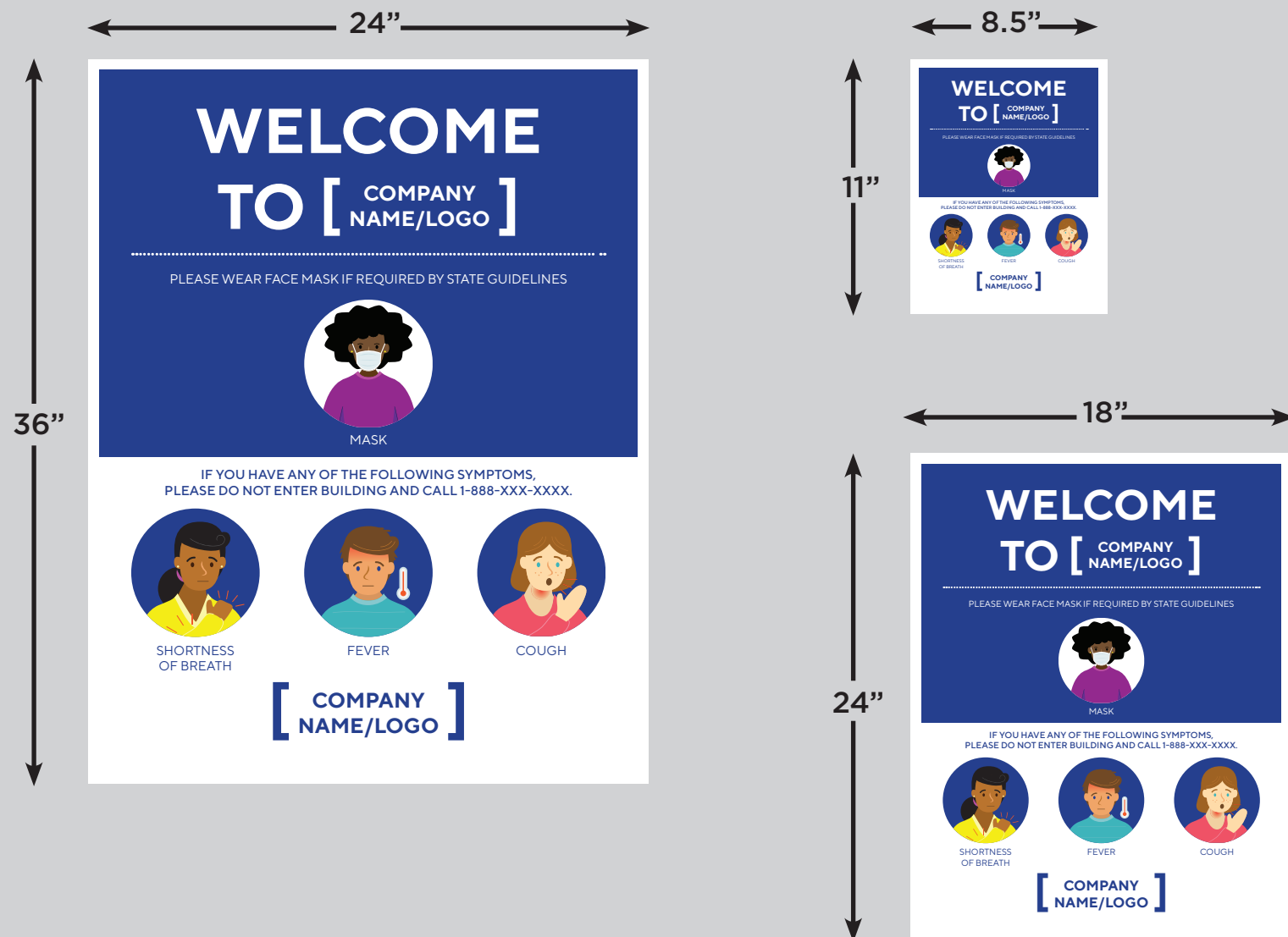
All of our products can be completely customized with your own designs and message and printed on any of our substrates/materials.

Customize Signage
To use Your Corporate
Colors And Logos



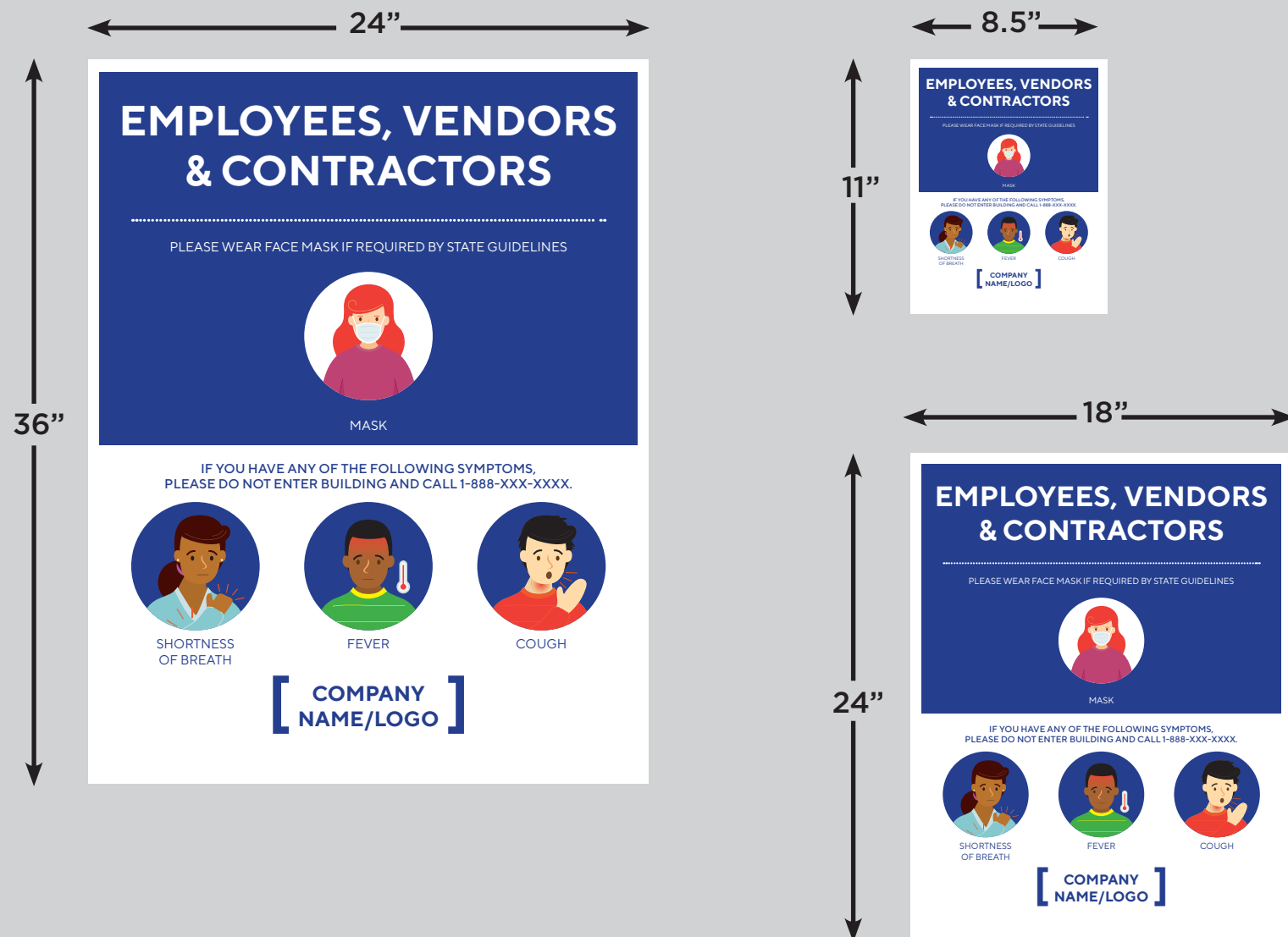
EXTERIOR ENTRANCE—WELCOME BACK BANNERS

Window Decal—Available in 3 sizes



EXTERIOR BACK OF HOUSE ENTRANCE

Door Decal—Available in 3 sizes



INTERIOR ENTRANCE

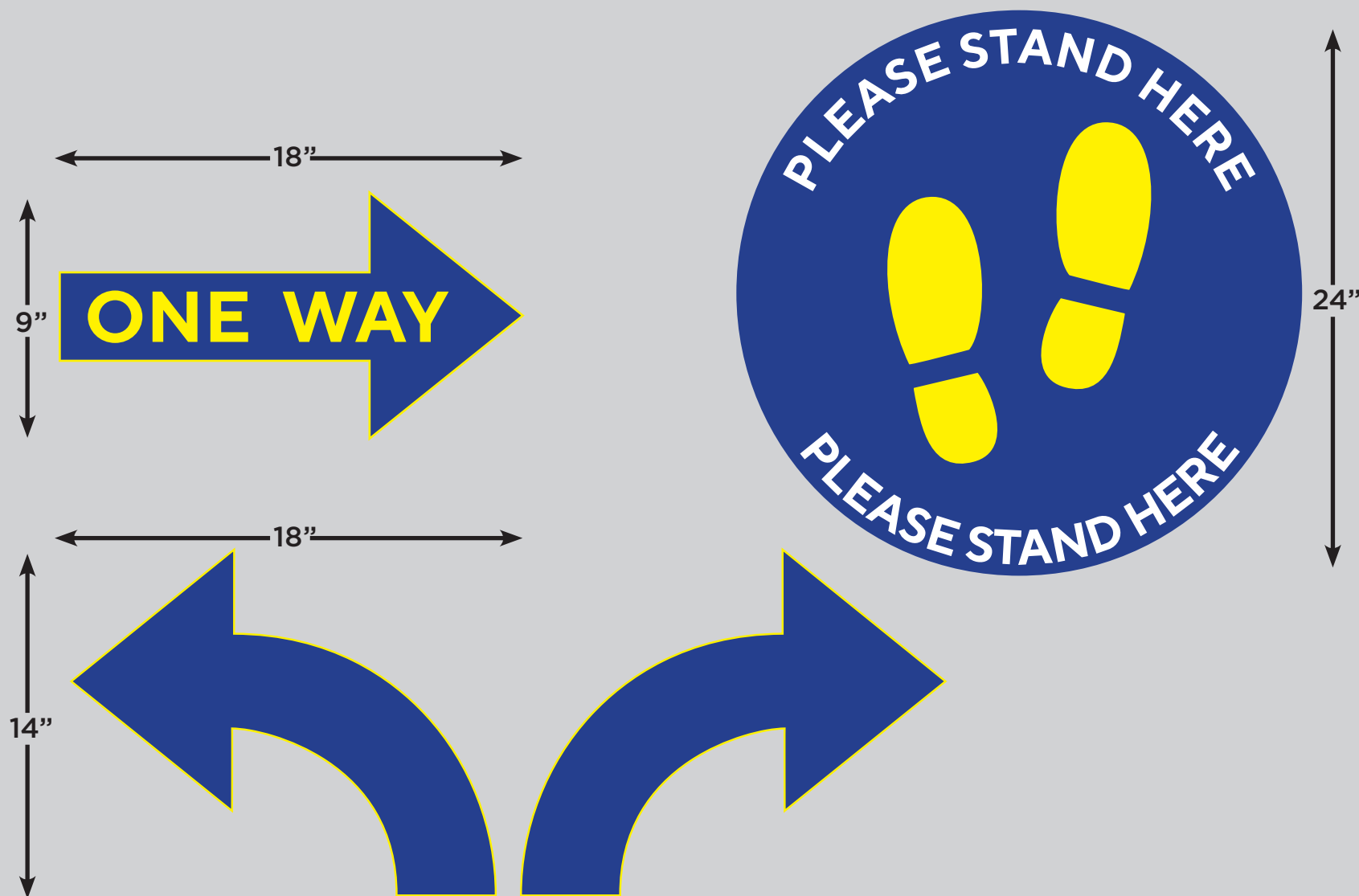
Banners—Available in 2 sizes



INTERIOR LOBBIES & RECEPTION AREAS

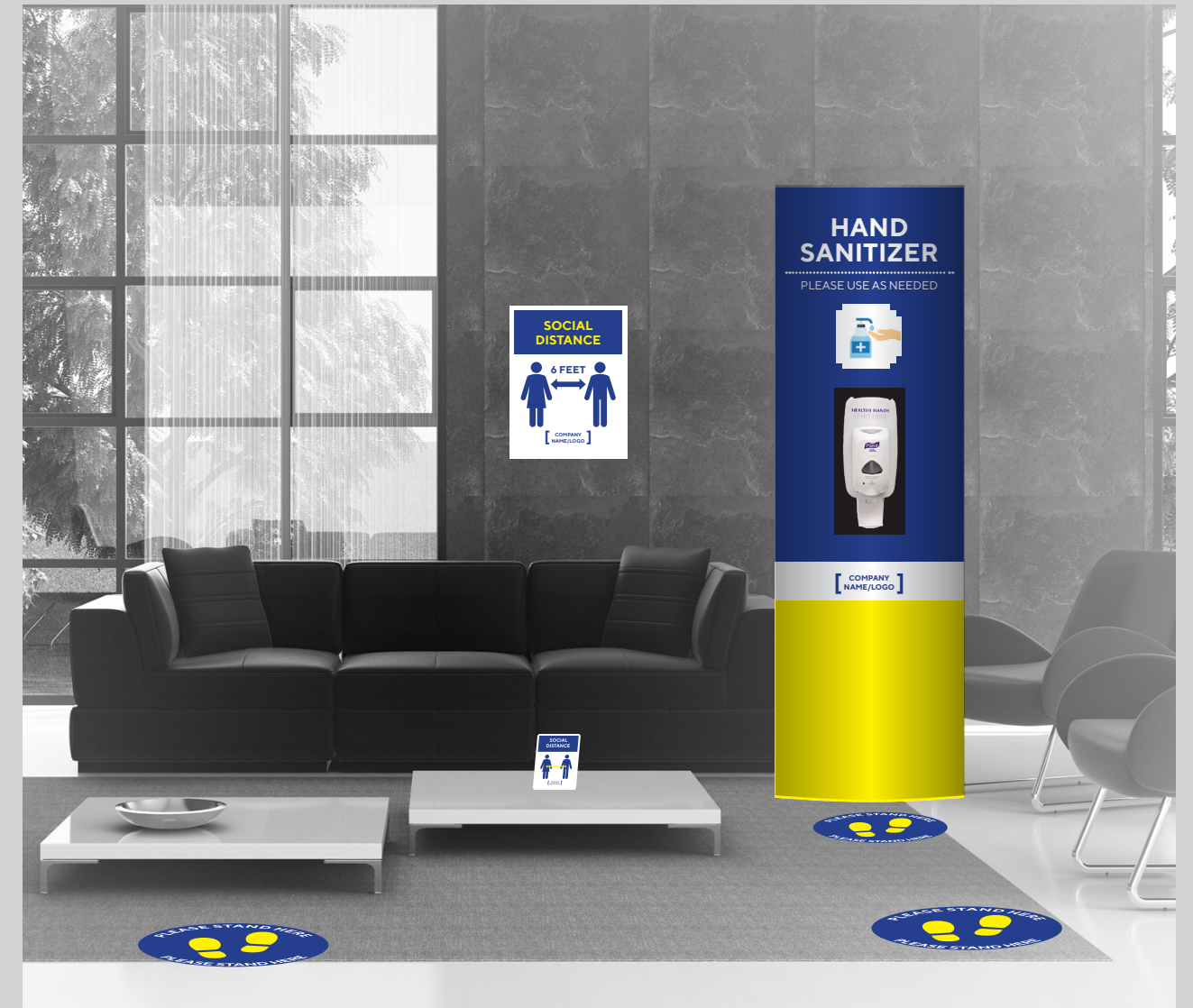
Arrows—suggested width 18"

Social Distancing Floor Decal—24" diameter



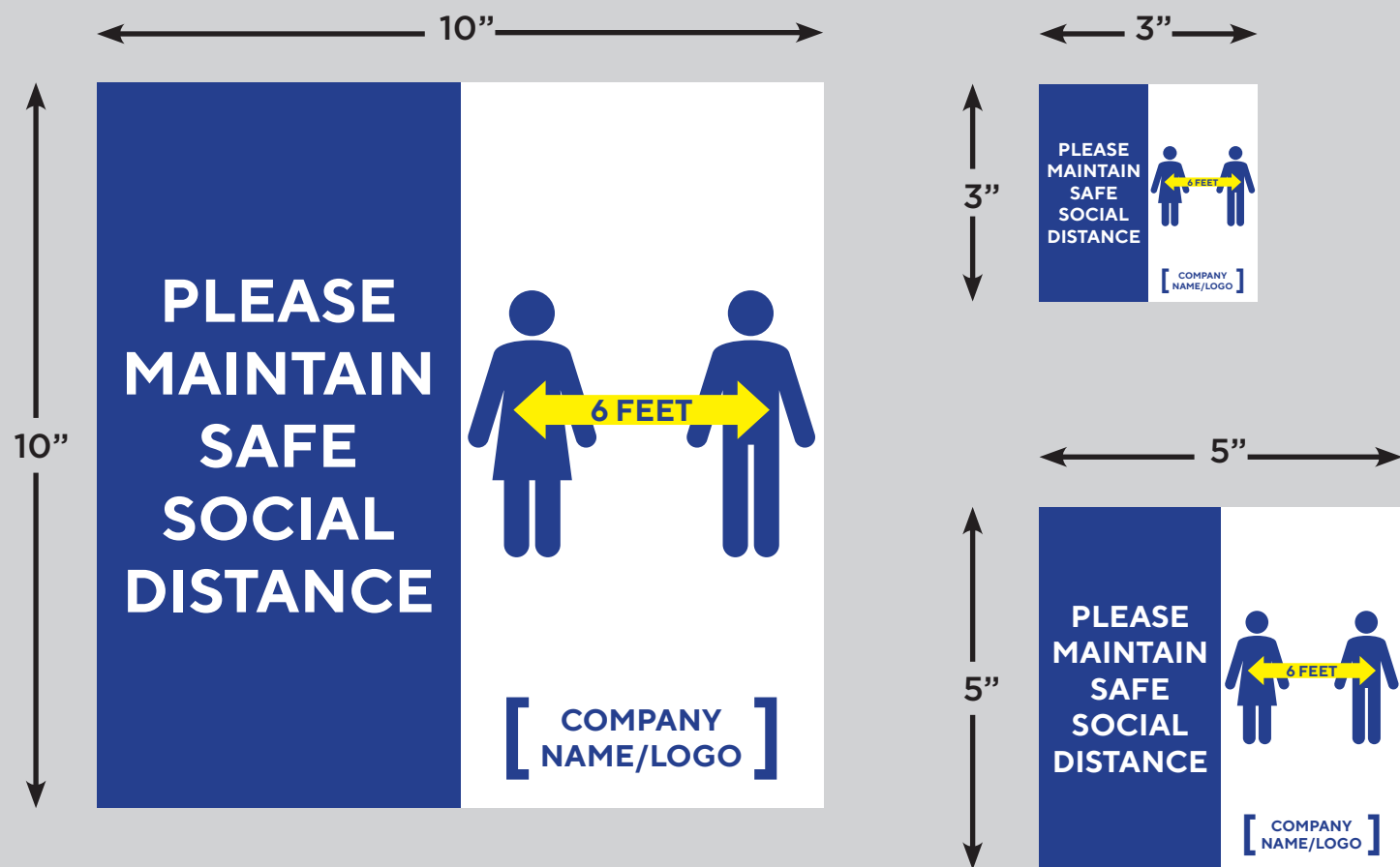
INTERIOR LOBBIES & RECEPTION AREAS

Pop-N-Lock Hand Sanitizer Station
Social Distancing Signs—Available in 3 sizes
Social Distancing Floor Decal—24" diameter



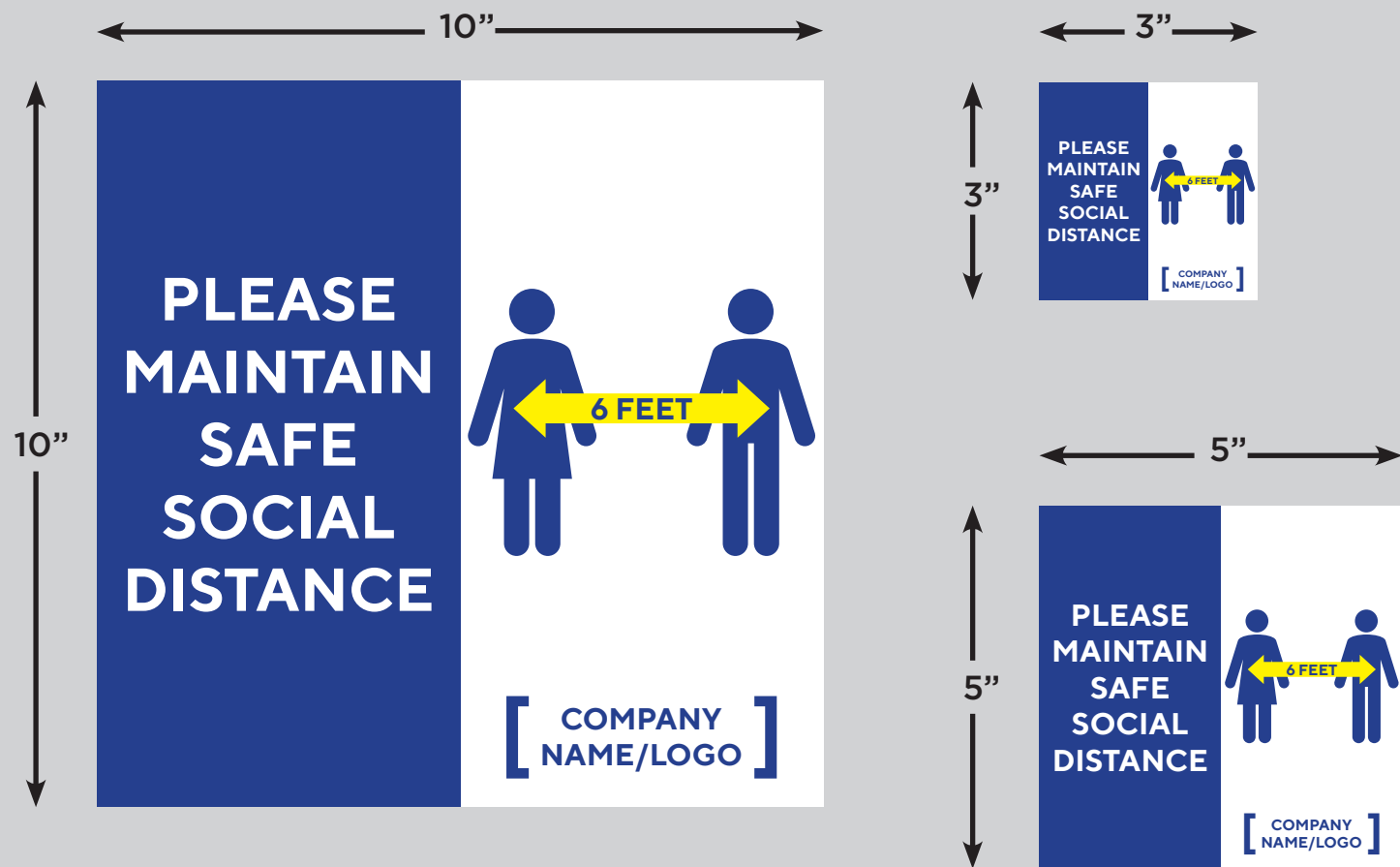
SOCIAL DISTANCE—OFFICE

Social Distancing Window Decal—Available in 3 Sizes



SOCIAL DISTANCE—OFFICE

Social Distancing Window Decal—Available in 3 Sizes



ELEVATOR

Double-Sided Hand Sanitizer Dispensing Stations
Social Distancing Floor Decal—Available in 3 Sizes
Wall Graphics



DOORS

Tamper Evident Door 'Security Seal' Labels
Door Hang Tags



FOOD SERVICE AREA

Social Distancing Floor Decal—Available in 3 Sizes

Social Distancing Floor Arrows

Wall Graphics

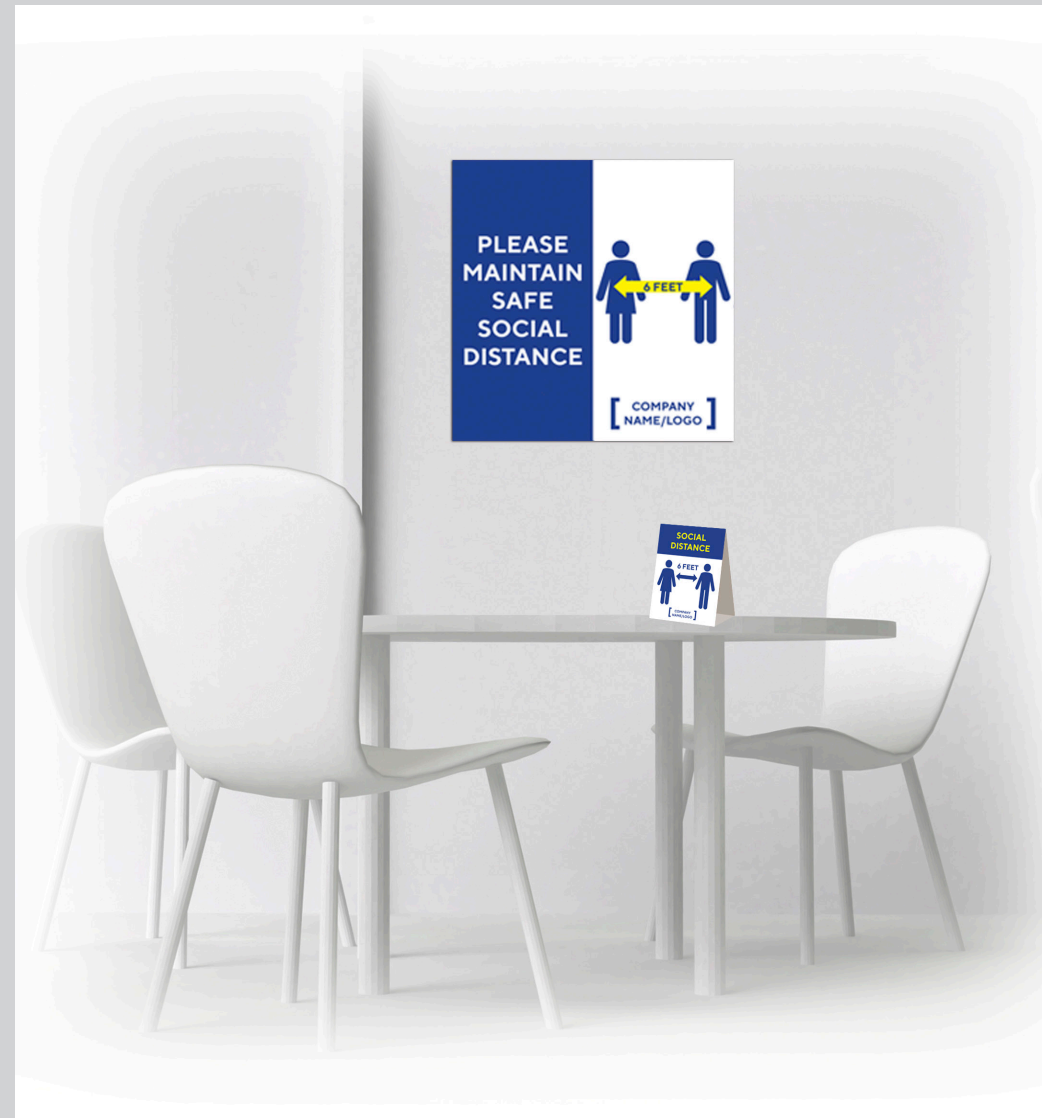
Table Tent

Printed Insert For Acrylic Fixture



COFFEE/BREAK AREA

Window/Wall Graphic
Available in 3 Sizes
Table Tent—8.5" x 11"



FITNESS AMENITIES

Wall Graphics

Social Distancing Floor Decal-Available in 3 Sizes

Vinyl Banner Roll Up With Hand Sanitizer

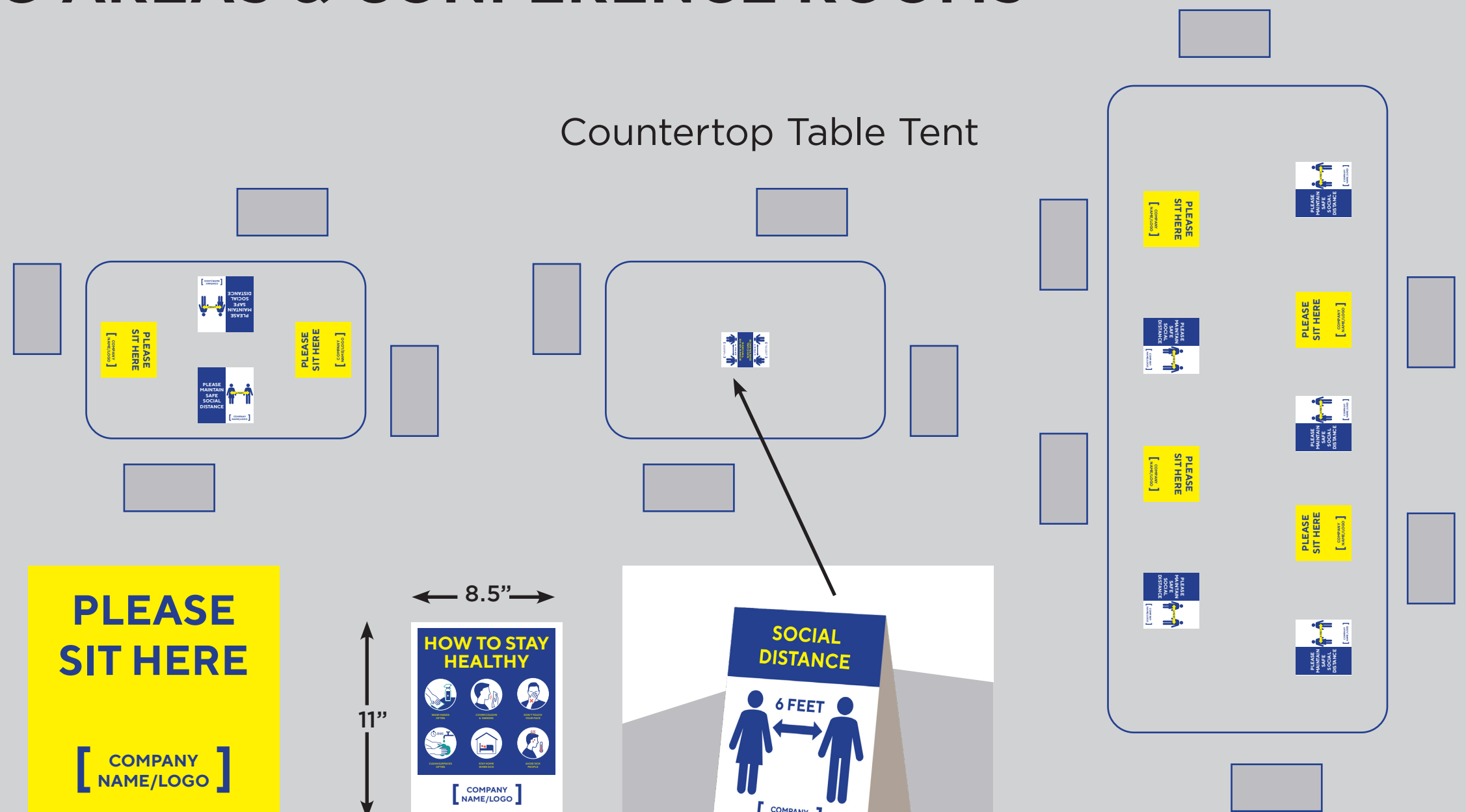
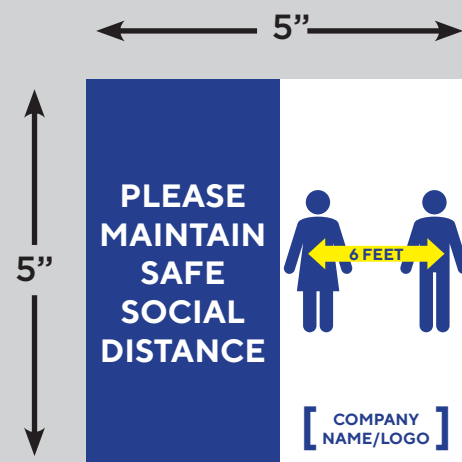
Removable Adhesive Graphics For Machines



INTERIOR MEETING AREAS & CONFERENCE ROOMS

Social Distancing Removable Adhesive Table Signs

Countertop Table Tent

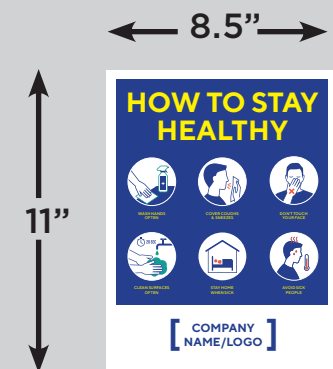
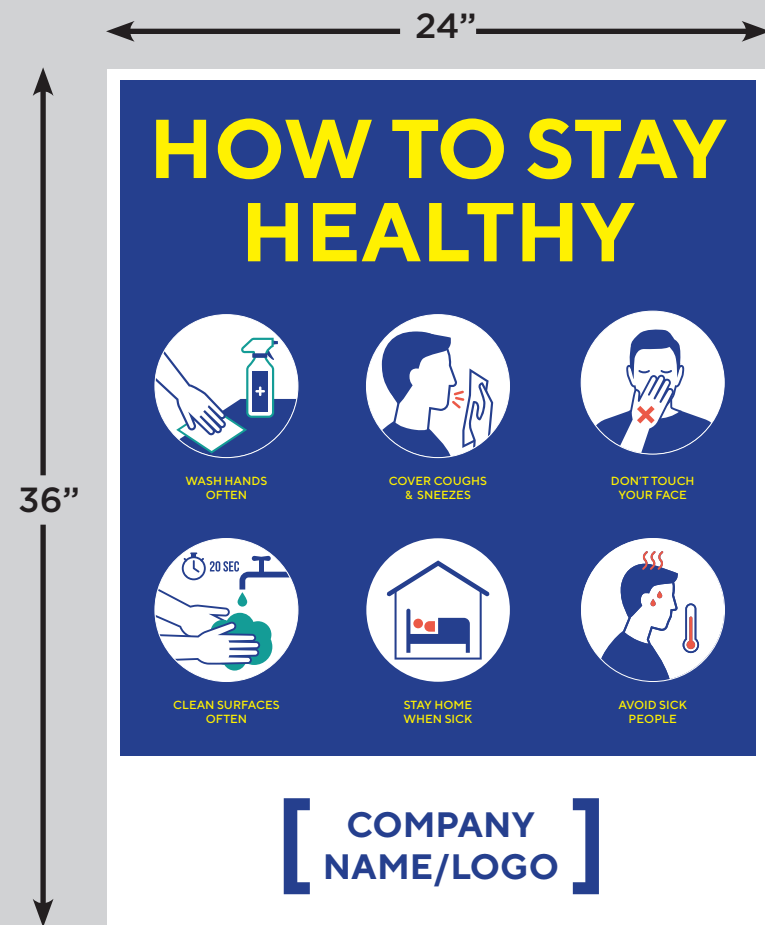


Top View
Social Distance
Seating Signs Table

INTERIOR BREAK ROOM SIGNAGE

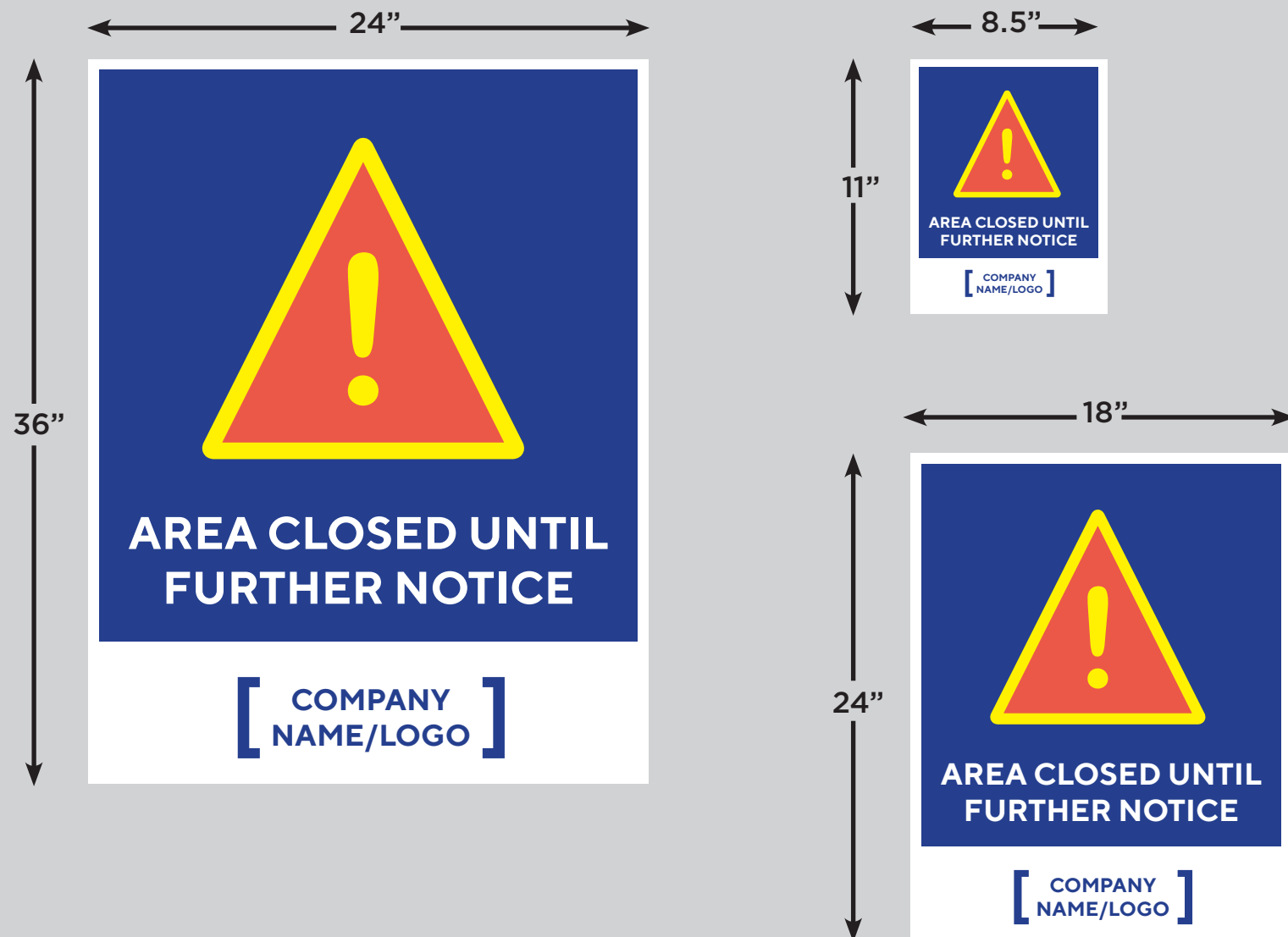
Wall/Window Graphic
Available in 3 Sizes
Table Tent

Countertop
Table Tent



INTERIOR CLOSED AREA SIGNAGE

Wall/Window Graphic
Available in 3 Sizes



INTERIOR RESTROOM

Wall/Window Graphic
Available in 4 Sizes



EMPLOYEE PROTECTION

- Masks
- Gloves
- Dividers
- Sneeze Guards



SANITATION DISPENSERS

- Wipe Dispensers
- Hand Sanitizer Dispensers
- Portable Wipes
- Portable Hand Sanitizer



TOUCHLESS TOOLS, SAFETY KITS, GIVEAWAYS

Touchless Keys
Thermometers
UV Sanitizers
Safety Kits



GRAPHIC PROPOSALS

All of our products can be completely customized with your own designs and message and printed on any of our substrates/materials.

Customize Signage
To use Your Corporate
Colors And Logos



GRAPHIC PROPOSALS

All of our products can be completely customized with your own designs and message and printed on any of our substrates/materials.

Customize Signage
To use Your Corporate
Colors And Logos

SOCIAL DISTANCING



WATCH YOUR SIX

HELP STOP THE SPREAD



MASKS REQUIRED

If you enter the store without a mask, you will be asked to leave.
Thank you for helping slow the spread of COVID-19!

PLEASE WAIT HERE TO BE SERVED

THANK YOU FOR PRACTICING SOCIAL DISTANCING



PLEASE MAINTAIN 6 FEET

HEALTH FIRST

STAY 6' APART



SOCIAL DISTANCING IN EFFECT

WAIT HERE PLEASE

PLEASE WAIT HERE



NOTICE

LIMIT THE NUMBER OF PERSONS ON THE ELEVATOR TO HELP STOP THE SPREAD OF INFECTION


6 FT APART



MAXIMUM OCCUPANCY


PEOPLE

NOTICE



PLEASE WIPE DOWN YOUR WORK AREA REGULARLY

PREVENT THE SPREAD OF CORONAVIRUS



PLEASE USE HAND SANITIZER BEFORE ENTERING



VISITOR ALERT!

HELP KEEP CORONAVIRUS (COVID-19) OUT OF OUR FACILITY

IF YOU ARE EXPERIENCING FLU-LIKE SYMPTOMS SUCH AS A FEVER, COUGHING, AND SHORTNESS OF BREATH

DO NOT VISIT TODAY

PLEASE RESCHEDULE YOUR VISIT

Wash Your Hands!
¡Lávese Las Manos!



- 1 Wet Hands**
Mójese las manos
- 2 Soap**
Ejébónese
- 3 Wash** for 20 seconds
Lávese las manos por 20 segundos
- 4 Rinse**
Enjuáguese
- 5 Dry**
Séquese las manos
- 6 Turn off Water** with Paper Towel
Cierre el grifo usando una toalla de papel

TEMPERATURE SCREENING STATION

THIS WAY



FOR YOUR SAFETY: ONE WAY



SUBSTRATES (MATERIALS)

Floor Decals: Textured non-slip removable vinyl makes these durable in any location inside or out. They won't leave residue behind, even stand up to high heels and are ASTM tested and certified for foot traffic safety.

Wall Decals: Low tack adhesive leaves no residue behind and adheres to almost any indoor surface (walls, elevators, columns, glass, mirrors, trash cans, and more).

Static Decals: Ideal for short-term use, these decals use static to cling to nearly any solid indoor surface.

Reusable EDGE Sign: A unique reusable easel based sign for long-term use. The virtually indestructible EDGE material won't crack, dent, or chip and includes a 5-year Limited Warranty.

FOAM Core Sign: A short-term signage staple and inexpensive solution for easel based signs.

Recyclable ECO Sign: The green alternative to traditional non-recyclable foam core signage. ECO material is 100% recyclable and ideal for short-term easel based signage

Retractable Banner: We offer a variety of retractable banners. Each is lightweight, compact, and durable. With small footprints, our retractable banners can be placed almost anywhere to display your messaging. Banner materials are available for both short and long-term usage.

Hanging Wall Banner: Whether your needs are short or long-term, hanging wall banners allow you to get your message across in a big way. With the option of adding pole pockets or grommets, hanging banners can be used both indoors and out. Single and double-sided options available.

HOW TO ORDER/CONTACT US

Our team of experienced in-house designers and project managers work directly with you from concept to completion to bring your ideas to life. For over 27 years, we have taken pride in providing exceptional products and customer service. The majority of our products are made in the USA and printed in our production facility in Columbia, Maryland. All of our products can be completely customized with your own designs and message and printed on any of our substrates/materials. We can ship anywhere in the world and would love to help you with any needs you may have!

[Shop product categories here](#)

-OR-

Contact us directly at info@meetingsigns.com or 301-470-1500.

One of our customer relations specialists is ready to create a quote or get an order started for you. We are looking forward to partnering with you.