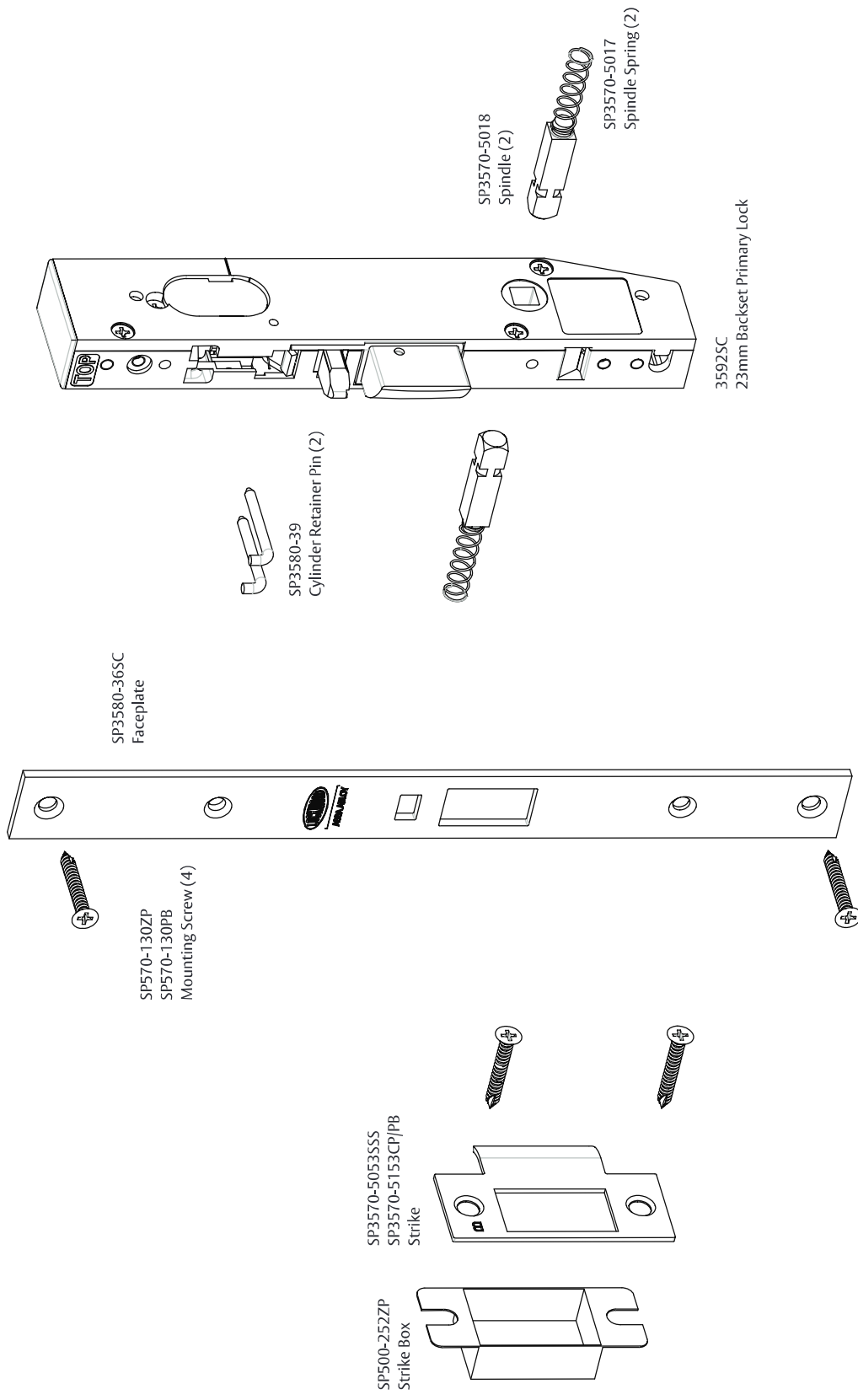


# 3592/3594 Series Multi-function Short Backset Locks

Various latching functions operated generally by key or handle outside and by turnknob, key or handle inside. These locks comply with building regulations for single -action escape doors.



## 3590 Series Short Backset Multi-Function Lock - Timber Fixing

### Orderable Locks

3592SC\* 23mm Backset Primary Lock - Timber Fixing

\*Also available in Chrome Plate and Polished Brass finishes.