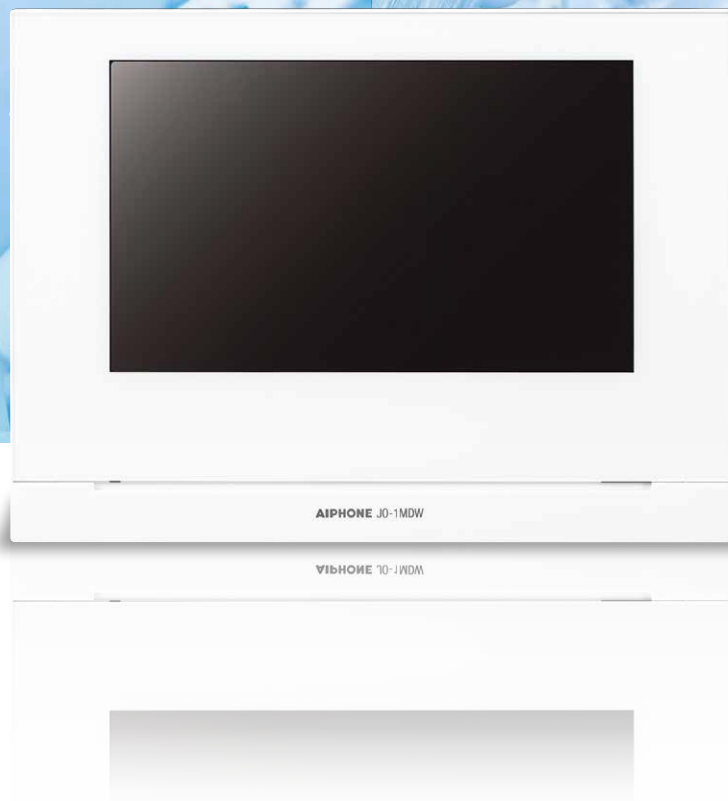
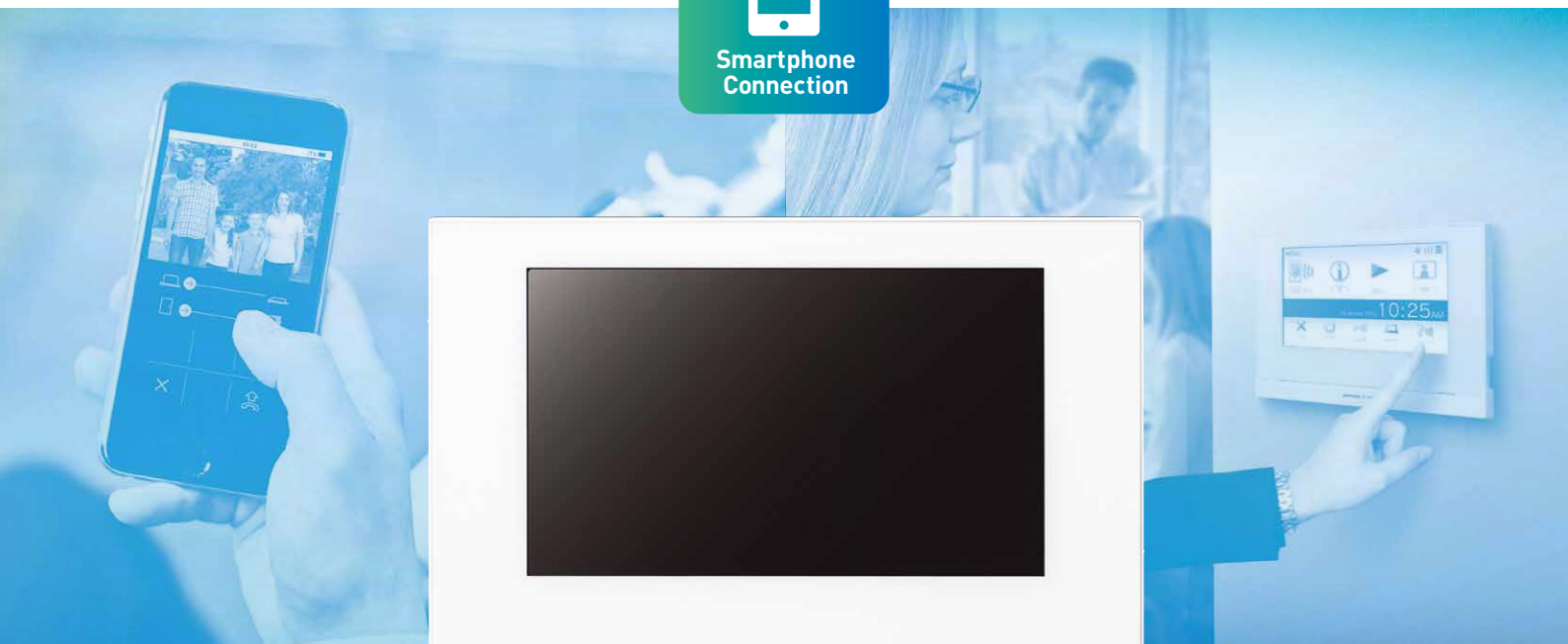


# AIPHONE

# J0 series

HANDS-FREE  
VIDEO INTERCOM  
7-INCH TOUCH SCREEN



# J0 Series with smartphone connectivity. Enhanced convenience and security for



J0-1MDW

- Easy operation by 7-inch touch screen
- Total hands-free communication
- Zoom and wide screen

7inch touch  
LCD screen

## Video Recording

Record visitors even when not able to answer calls. View the recordings from the master station or your smartphone.

### Video memory

- Internal memory : 10 calls(max)
- SD card : 1,000 calls(max)



## View recorded calls anywhere



J0-1MDW



micro SD  
micro SDHC  
(4GB~32GB)



Smartphone









# your home and office.

 1 × 
  2 × 
  8

Door Room Smartphone



## Touch screen operation

- 
**Smartphone connection**  
 Control whether calls are forwarded to mobile devices.
- 
**Notifications**  
 Confirm system updates and other important notifications.
- 
**Play**  
 Play and manage call recordings.
- 
**Monitor**  
 Monitor your door.
- 
**Settings**  
 Manage system settings.
- 
**Door release**  
 Operate the electric lock connected to the master station.
- 
**Option output**  
 Control external devices connected to the master station.
- 
**Talk**  
 Communicate with the door station.

## Door Station Options

Select from 3 different styles. All options can handle tough weather conditions.

 <b>JO-DA</b>	<ul style="list-style-type: none"> <li> ... Dust and moisture resistant</li> <li> ... Nighttime LED</li> </ul>	 <b>JO-DV</b>	<ul style="list-style-type: none"> <li> ... Dust and moisture resistant</li> <li> ... Ruggedized against vandalism</li> <li> ... ZINC material</li> <li> ... Nighttime LED</li> </ul>	 <b>JO-DVF</b>	<ul style="list-style-type: none"> <li> ... Dust and moisture resistant</li> <li> ... Ruggedized against vandalism</li> <li> ... STAINLESS STEEL material</li> <li> ... Nighttime LED</li> </ul>
---	--	---	---	--	--

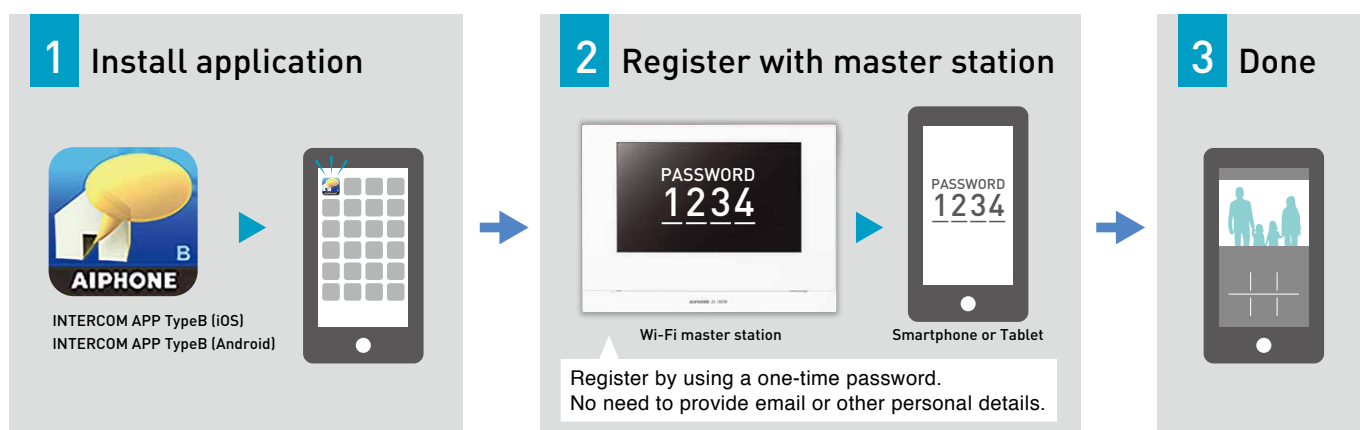
# Smartphone Application provides connectivity everywhere.



## Have the functionality of the master station in your pocket

- Answer calls from the door station.
- Monitor the door station.
- Operate electric locks while answering a call.
- Control external devices while answering a call.
- Switch between speakerphone mode and telephone mode as necessary.
- Zoom in and zoom out functions.

## Connect your smartphone in 3 simple steps

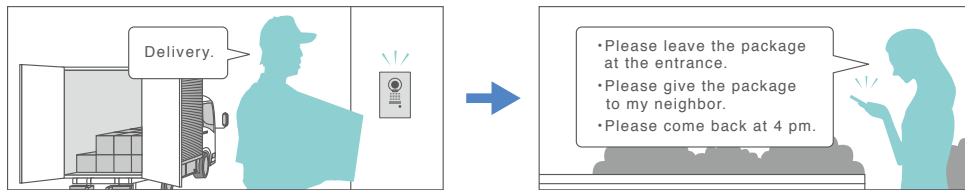


# Usage Example

## Answer calls anywhere inside or outside your home



## Handle deliveries when not at home



## Open your door from anywhere

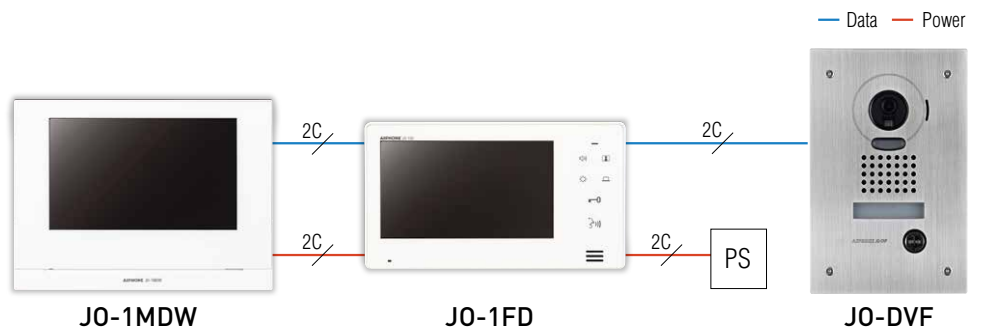


### Notes

- Connect your JO-1MDW master station to a commercially available Wi-Fi router that is connected to the Internet.
- Ensure that you install the master station near your Wi-Fi router and that the wireless connection is not obstructed.
- Ensure that your internet connection for both the master station and your mobile device meets the minimum requirements for using the application (1.3MBs for download and 1.3MBs for upload).
- The application cannot be used for emergency calls or communication.
- All internet connection fees and data usage fees are the responsibility of the user.
- Up to 8 mobile devices can be registered to one master station.

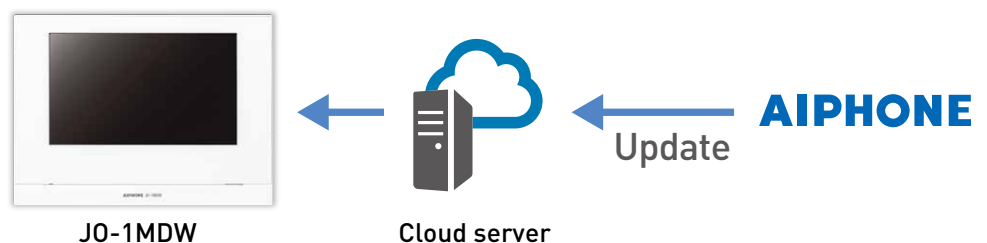
## Simple installation

Connect all units in the system with just 2 wires.

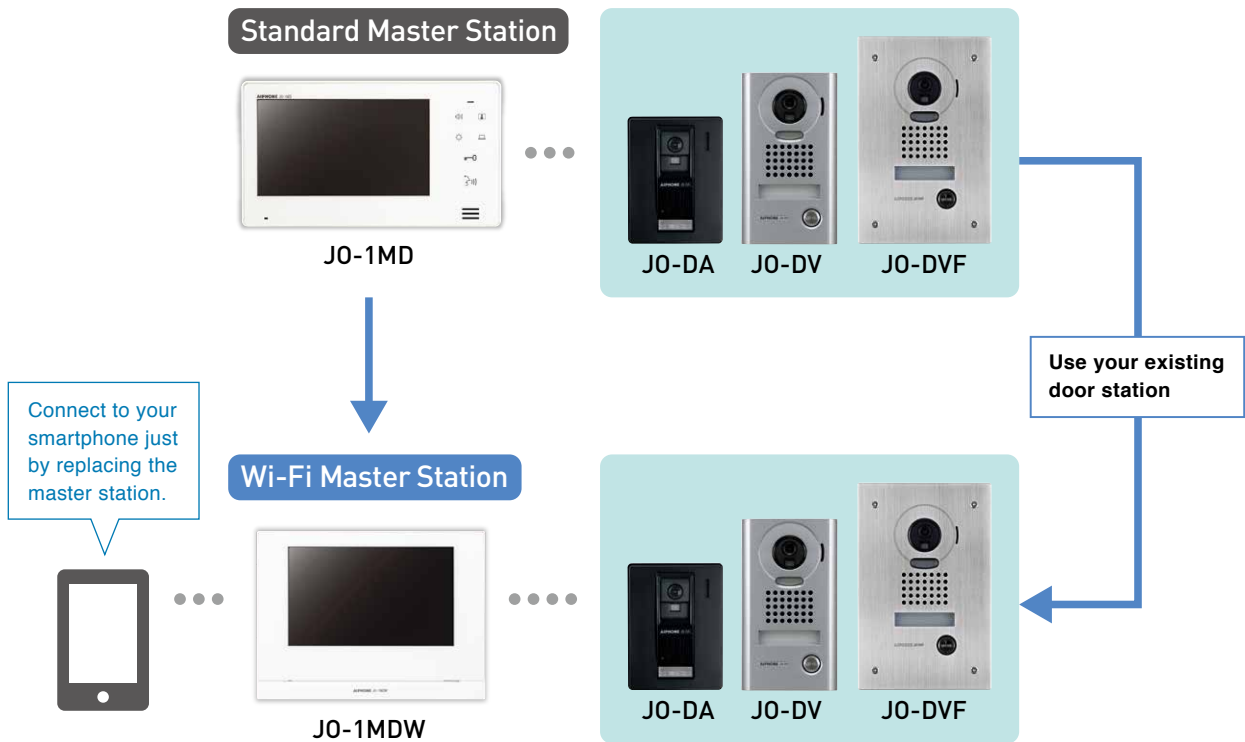


## Automatic updates

Automatic updates ensure you always have the latest functionality and security.

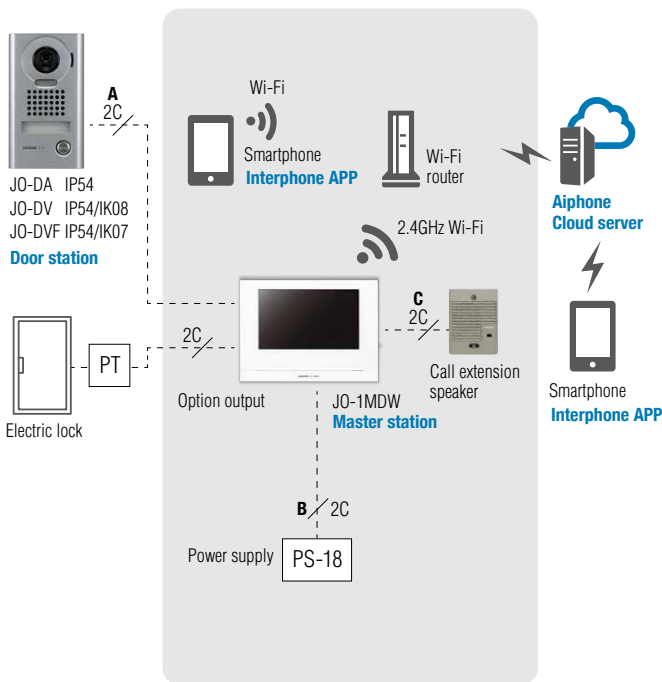


# Compatible with existing JO series.

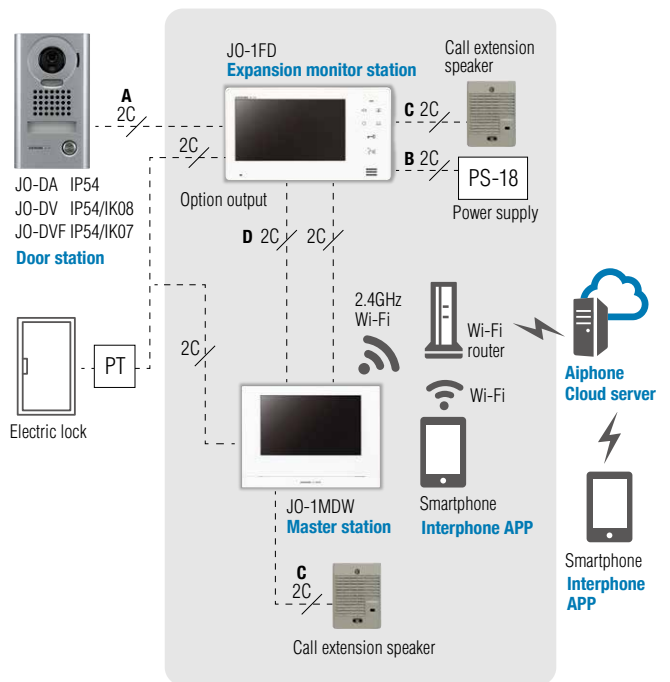


## System Configuration

### • Installations Using a Single Room Station



### • Installations Using Two Room Stations



	φ 0.65mm	22 AWG	φ 0.8-1.2mm	20-16 AWG
A	50m	165'	100m	330'
B	5m	16'	10m	33'
C	50m	165'	150m	490'
D	50m	165'	100m	330'

PS18:PS-1820,PS-1820S,PS-1820UL,PS-1820BF

## Line up

### Wi-Fi Master Station

#### Master station



JO-1MDW

#### Boxed sets



JOS-1AW: JO-1MDW, JO-DA  
 JOS-1VW: JO-1MDW, JO-DV  
 JOS-1FW: JO-1MDW, JO-DVF

### Standard Master Station

#### Master station



JO-1MD

#### Boxed sets



JOS-1A: JO-1MD, JO-DA  
 JOS-1V: JO-1MD, JO-DV  
 JOS-1F: JO-1MD, JO-DVF

#### Door station



JO-DA



JO-DV



JO-DVF

#### Expansion monitor station



JO-1FD

## Specifications

### JO-1MDW

Power source	18V DC, Supplied from a power supply
Current consumption	450mA(max.) 80mA(standby.)
Video monitor	7" TFT LCD touch screen
Resolution	800×480 (approx.384,000 pixels)
Type of communication	Open voice hands-free auto-voice actuation or Touch-to-talk communication
Ambient temperature	0~40°C
Wireless LAN interface	IEEE802.11b/g/n
Video memory	Internal memory: 10 calls(max.) (10 seconds/call) SD card: 1,000 calls(max.) (10 seconds/call)
Protect video	Internal memory: 5 calls(max.) micro SDHC card: 100 calls(max.)
SD card	micro SDHC card: 4GB-32GB
Door release contact	24V AC/DC, 1A (N/O dry closure contact)
Option button output	24V AC/DC, 1A (N/O dry closure contact)
Mounting	Surface wall mount
Material	Unit case: Self-extinguishing PC + ABS resin Surface panel: Glass
Weight	Approx.620g

### JO-1MD

Power source	18V DC, Supplied from a power supply
Power consumption	410mA(max.) 24mA(standby.)
Video monitor	7 inch TFT color LCD
Pixels	300,000 pixels (approx.)
Type of communication	Open voice hands-free auto-voice actuation or Press-to-talk communication
Ambient temperature	0~40°C
Door release contact	24V AC/DC, 0.5A (N/O dry closure contact)
Option button output	24V AC/DC, 0.5A (N/O dry closure contact)
Mounting	Surface wall mount
Electrical box	3-gang box
Material	Unit case: Self-extinguishing ABS resin Surface panel: Polycarbonate
Weight	Approx.470g

### JO-1FD

Power source	18V DC, Supplied from a power supply
Power consumption	420mA(max.) 38mA(standby.)
Video monitor	7 inch TFT color LCD
Pixels	300,000 pixels (approx.)
Type of communication	Open voice hands-free auto-voice actuation or Press-to-talk communication
Ambient temperature	0~40°C
Door release contact	24V AC/DC, 0.5A (N/O dry closure contact)
Option button output	24V AC/DC, 0.5A (N/O dry closure contact)
Mounting	Surface wall mount
Electrical box	3-gang box
Material	Unit case: Self-extinguishing ABS resin Surface panel: Polycarbonate
Weight	Approx.480g

### JO-DA

Power source	Supplied from Master monitor station or Expansion monitor station
Type of communication	Open voice hands-free communication
Camera	1/4 inch color CMOS
Ambient temperature	-20~+60°C
Mounting	Surface wall mount (Directly to wall or electrical box)
Electrical box	Single-gang box
Material	Self-extinguishing PC + ABS plastic
Weight	Approx.200g
IP rating	IP54

### JO-DV

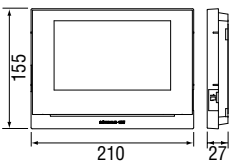
Power source	Supplied from Master monitor station, Expansion monitor station, or Guard station
Type of communication	Open voice hands-free communication
Camera	1/4 inch color CMOS
Ambient temperature	-20~+60°C (-4~+140°F)
Mounting	Surface wall mount (Directly to wall or electrical box)
Electrical box	Single-gang box
Material	Front panel: Zinc die cast. Main unit: Self-extinguishing PC + ABS resin
Weight	Approx.650g
IP rating	IP54
IK rating	IK08

### JO-DVF

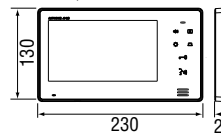
Power source	Supplied from Master monitor station or Expansion monitor station
Type of communication	Open voice hands-free communication
Camera	1/4 inch color CMOS
Ambient temperature	-20~+60°C
Mounting	Flush mount
Electrical box	Not used/(Mounts on built-in back box)
Material	Front panel: Stainless steel. Main unit: Self-extinguishing PC + ABS resin
Weight	Approx.580g
IP rating	IP54
IK rating	IK07

## Unit Dimensions

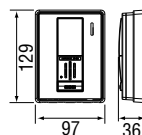
#### JO-1MDW



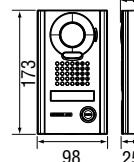
#### JO-1MD, JO-1FD



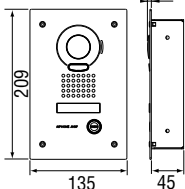
#### JO-DA



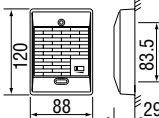
#### JO-DV



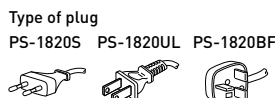
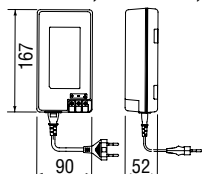
#### JO-DVF



#### IER-2



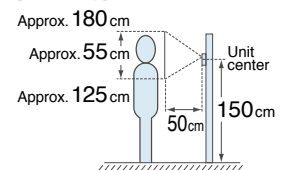
#### PS-1820S, PS-1820UL, PS-1820BF, PS-1820\*



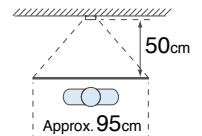
\* AC cord & plug is not included with PS-1820.

## Mounting positions and image view area

#### [Vertically]



#### [Horizontally]



# JO series

HANDS-FREE  
VIDEO INTERCOM  
7-INCH TOUCH SCREEN

Distributed by :



 **AIPHONE**<sup>®</sup>  
*Providing Peace of Mind*  
<https://www.aiphone.net/>

JO(E)1811A

All rights reserved. All statements valid at time of printing. The design and specifications are subject to change without notice for improvement.

Printed in Japan (E)  
MB61066AHZ