

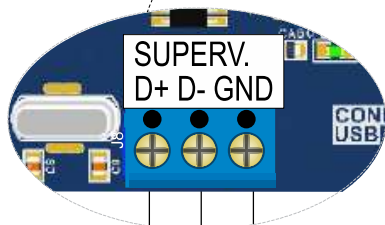
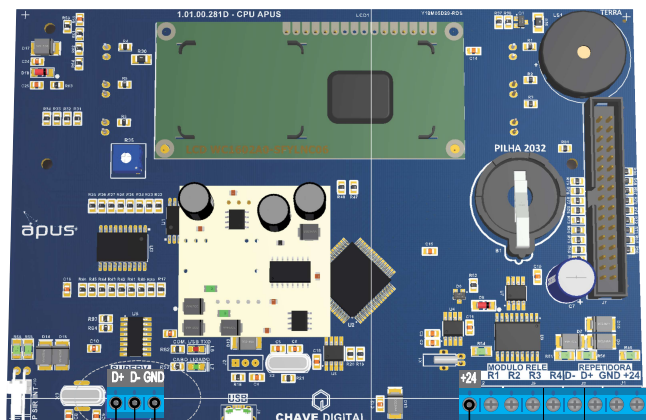
ESQUEMA DE LIGAÇÃO

Apus/Supervisora REPETIDOR DE SINAL ISOLADO RS422/485

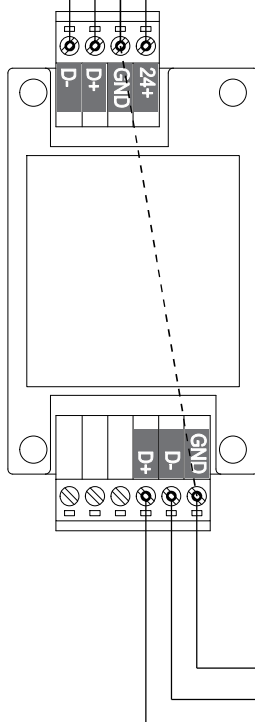
CODIGO: 315.480



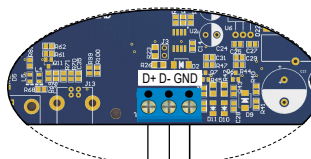
Placa CPU Apus código 305.500



Conexão de entrada da Apus



CENTRAL SUPERVISORA 311.000



Conexão na porta de comunicação RS485 da Supervisora Apus