

## Clutch Helmet Inspection Bulletin

April 29th, 2022

### RE: Chin Strap Stitching Inspection

Attn: All FXR Dealers and Customers

FXR has recently become aware of two instances of a defect on the webbing stitching that secures the D-Rings to the chin strap of FXR Clutch Helmets manufactured and sold during the 2022 model year.

We believe that these incidences are isolated, however we are requesting all FXR Dealers immediately pull and inspect their inventory before allowing any further helmets to be sold.

FXR is also requesting that customers inspect their helmet before further use, if purchased at anytime after March 1st, 2022.

Please review / follow the instructions below and report any findings immediately to FXR.

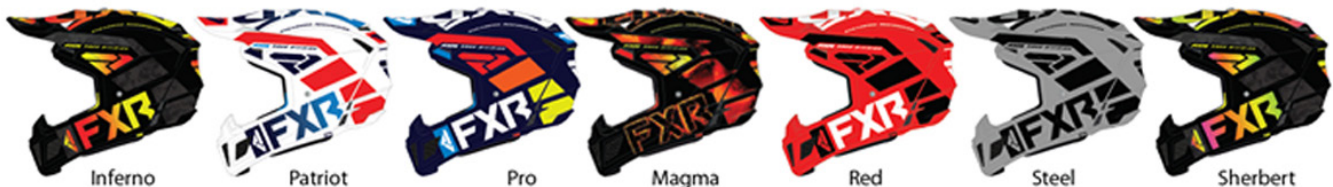
If further incidences are found, FXR may issue a full recall, at which point dealers will be required to contact all customers who have purchased a Clutch Helmet and make arrangements for inspection at the dealership level.

Please contact FXR, either directly or through your sales or customer service representative if you have any questions or concerns.

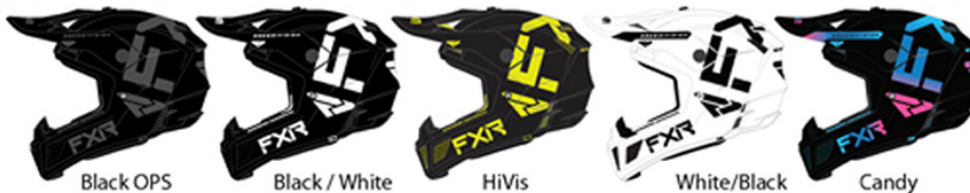
### Clutch Helmet Models identified for inspection:

- 220614 - Clutch EVO LE Helmet
- 210617 - Clutch CX
- 220616 - Clutch Rockstar

#### 220614 - Clutch EVO LE



#### 210617 - Clutch CX



#### 220616 - Clutch Rockstar



# Clutch Helmet D-ring Inspection Procedure

1. Remove helmet from box

2. Open the bottom of the helmet bag, exposing the chin strap

1. & 2.



3. On the D-ring side of the buckle, push back the chin strap padding to expose the stitching. (Do not remove hangtag. It is not required)

3. Before



After

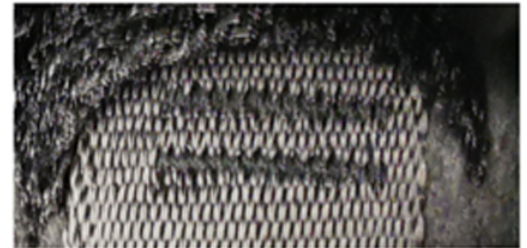


Inspect this stitch (see green arrow)

4. Inspect the exposed side of the strap for the following stitch features: (see image (4.) for reference)

4.

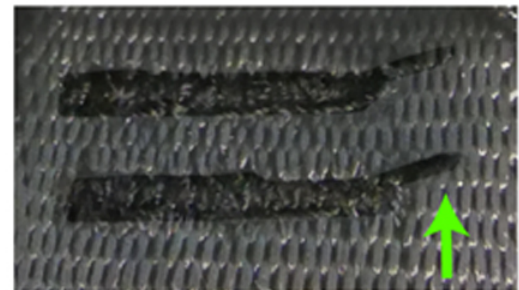
- 2 parallel, unconnected rows of stitch
- Stitches are even in width & length
- No loose threads
- Stitches are pulling the webbing tightly together



5. Inspect the back side of the strap for the following stitch features: (see image (5.) for reference)

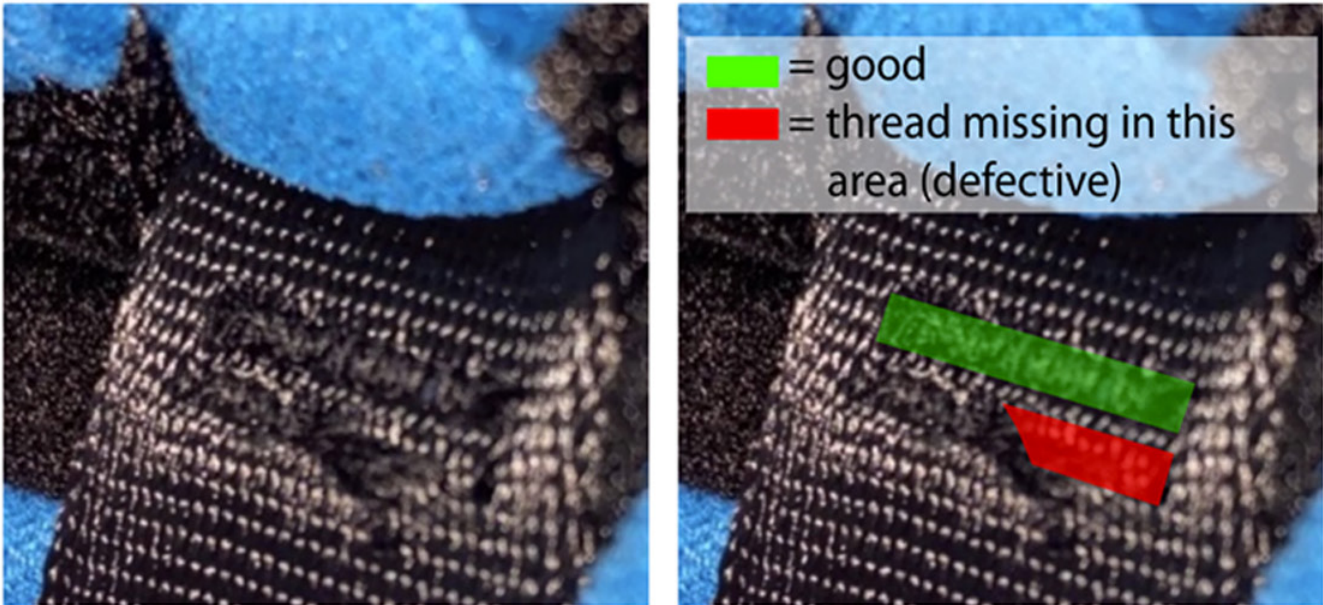
5.

- Stitches are pulling the webbing tightly together
- No loose threads. A very short, exposed thread-end is permitted. As shown in image (5.)



# Example of defective stitching

Note that the thread is incomplete and partially missing on the 2nd row.



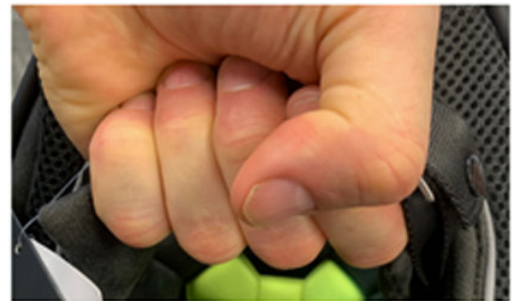
## 6. Check The stitch integrity:

- a. Insert 1 – 2 fingers into either side of the stitched webbing where the D-rings are located. As shown in image (6.)
- b. Pull with Moderate Force repeatedly - approximately 10 times.
- c. Then, grasp the entire fastened buckle firmly as shown in image (6A.)
- d. Pull with Moderate Force repeatedly - approximately 10 times.
- e. Repeat steps 4. And 5. From above

6.



6A.



7. If the stitching passes inspection, pull the chin strap padding back over the exposed strap, thereby returning the helmet to usable / saleable state.

If the stitching does not pass the above inspection process,  
**DO NOT USE / SELL** this helmet.  
Immediately contact your Dealer /Sales associate for assistance.