

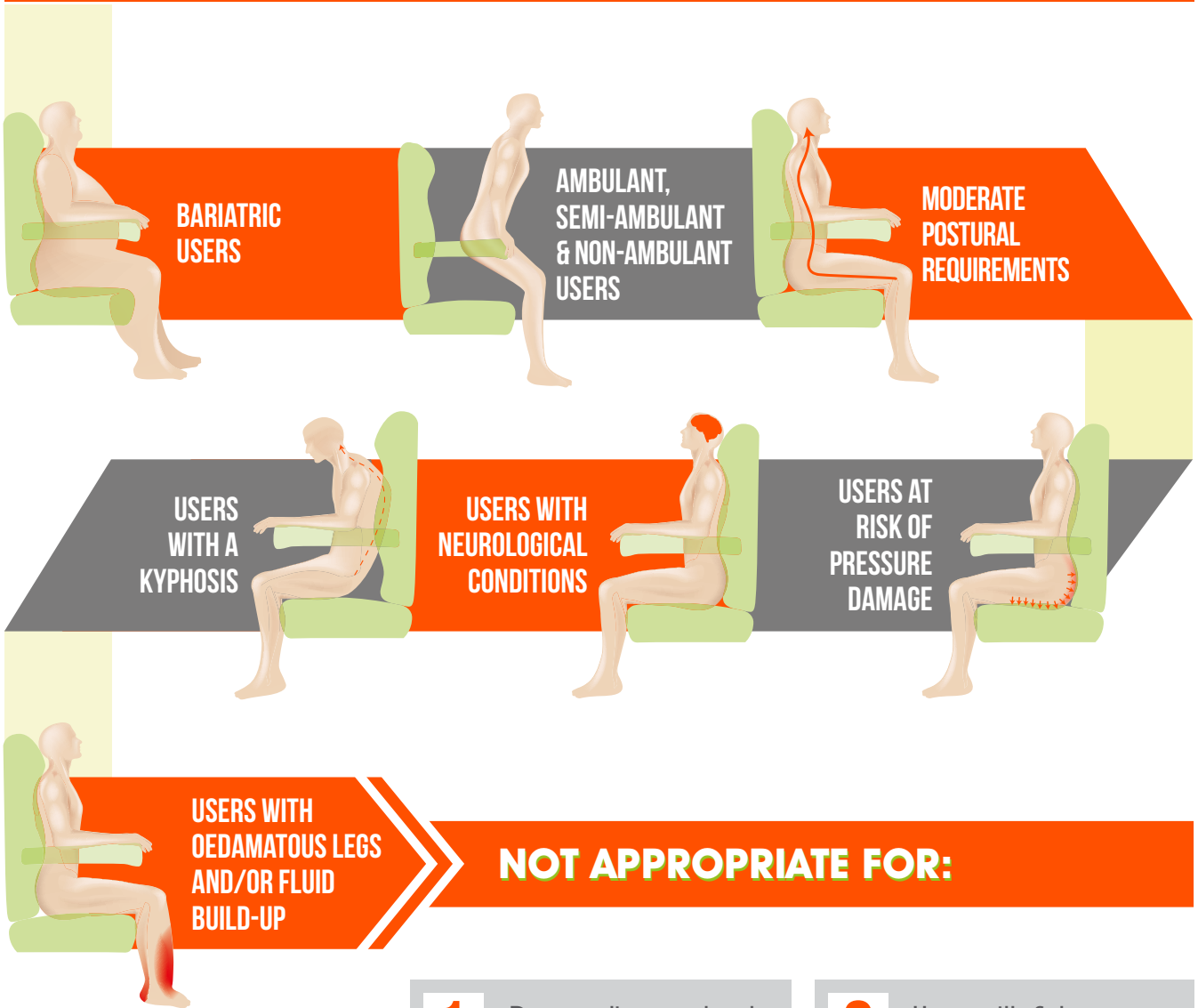
---

# Configura<sup>®</sup> Bariatric<sup>™</sup>

Information & Assessment Form



# APPROPRIATE FOR:



# NOT APPROPRIATE FOR:

**1**

Demanding postural requirements

**2**

Users with fixtures and contractures

**3**

Users who need to be transported from room to room

# INTENDED ENVIRONMENT



Domestic use



Care homes or nursing homes

# PRESCRIBER DETAILS

Name: .....

Department: .....

Address: .....

.....

.....

Telephone: .....

Email: .....

# USER DETAILS

Name: .....

Address: .....

.....

.....

Telephone: .....

Email: .....

User weight: .....

Pressure Care: .....

Posture: .....

Mobility: .....

Diagnosis: .....

Prognosis: .....

Transfer method: .....

Current seating: .....

Problems with current seating: .....

Notes: .....

.....

.....

.....

# STANDARD CHAIR SPECIFICATION

Configura® Bariatric brings Configura® technology to bariatric seating. This offers unprecedented adjustability, flexibility and peace of mind for the prescriber.

It is also available with a full width alternating air cushion to meet the needs of users at high risk of pressure damage.

- **EASY ADJUSTMENT** before and after delivery to suit varied and changing needs
- **QUICK** and easy to recycle via removable, washable covers
- **AFFORDABLE**, providing more consistent budget management and significant savings on special chairs

254 kg or 317 kg  
capacity

127 kg / 158 kg  
Legrest capacity

Tilt-in-space option  
available

Medium-high risk  
pressure relief as  
standard



Independent backrest

Independent legrest

Adjustable width  
and depth

Riser function

## DUAL MOTOR OPERATION (STD)



Dual motor operation allows independent adjustment of the legrest elevation and backrest recline. This enables infinite positioning for maximum comfort and support for users with more complex requirements.

A dual motor chair has four buttons on the handset.

Does not have Tilt-in-Space.

## TILT-IN-SPACE (WITH INDEPENDENT LEGREST)

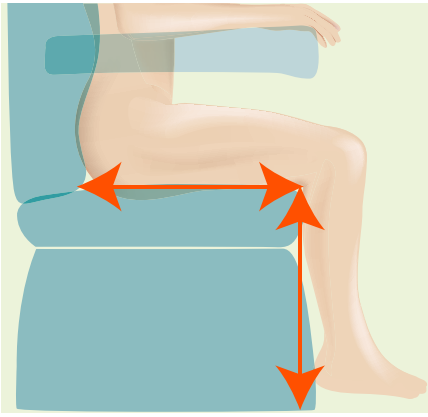


Tilt-in-space improves pelvic stability and posture, pressure distribution, circulation, makes hoisting easier and reduces the tendency to slip forward in the chair.

By maintaining the same angle at the hips (i.e. the same angle between backrest and seat base), and tilting the entire chair back, the user can achieve a relaxed position whilst maintaining pelvic stability. Maintaining the position of the pelvis promotes good sitting and reduces the user's susceptibility to developing poor posture. As more weight is transferred through the trunk and less through the base, a larger seating footprint is achieved and pressure is distributed over a wider area. This reduces the risk of pressure sores in the sensitive sacral and ischial tuberosity areas.

The ability to have the user's ankles higher than the hips can also aid circulation and reduce fluid build-up in the legs. When hoisting, Tilt-in-Space enables gravity to assist in correct positioning of the user's pelvis at the back of the chair.

The independent legrest enables tilt to be used whilst lowering the legs. Suitable for users with reduced knee flexion or shortened hamstrings.

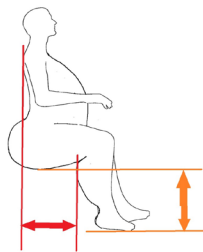


# SIZE

## Key thoughts:

- 3 measurements are required for selecting a chair; seat depth, seat height and seat width – see below drawings for clarity.
- When selecting a chair size, prioritise the chair measurements in the following order: seat depth, seat height then seat width. This will ensure the selected size is the right overall proportion for the user.
- If you cannot find the size you need, check out the other chairs in our range or contact us as we may be able to supply a special size.

## How to Measure a Plus size Service User



Seat Depth \*\*

Seat Height \*

\* Seat Height. Take measurement from floor to lowest point of body mass  
 \*\* Seat Depth. Take measurement from shoulder blade to the back of the calf

Measurement guide applicable to Configura Bariatric Chair only.



## Standard Configura Bariatric (Dual Motor)

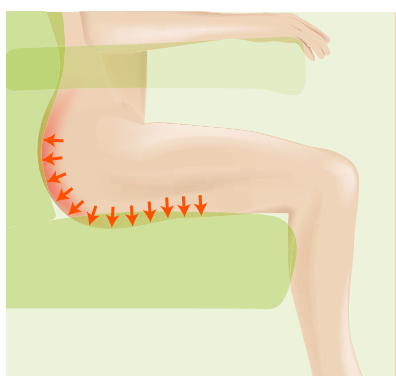
Size	Product Code	Select	Seat Height	Select	Seat Width	Select	Seat Depth	Select
254kg	CR5412*	<input type="checkbox"/>	406mm (16)**	<input type="checkbox"/>	711mm (28)'' <sup>ooo</sup>	<input type="checkbox"/>	558mm (22'')	<input type="checkbox"/>
	CR5414**	<input type="checkbox"/>	457mm (18)**	<input type="checkbox"/>	660mm (26'')	<input type="checkbox"/>	508mm (20'')	<input type="checkbox"/>
					609mm (24'') <sup>ooo</sup>	<input type="checkbox"/>	457mm (18'') <sup>o</sup>	<input type="checkbox"/>
317kg	CR5420	<input type="checkbox"/>	457mm (18'')	<input type="checkbox"/>	863mm (34'') <sup>oo</sup>	<input type="checkbox"/>	558mm (22'')	<input type="checkbox"/>
					812mm (32'')	<input type="checkbox"/>	508mm (20'')	<input type="checkbox"/>
					762mm (30'') <sup>ooo</sup>	<input type="checkbox"/>	457mm (18'') <sup>o</sup>	<input type="checkbox"/>

Size	Product Description	Product Code
o	Configura Bariatric Depth Adjustment Kit	CA2432
oo	Configura Bariatric Armrest, 28" (Std TIS), 34" (Supa), Duratek, PAIR	CA2512
ooo	Configura Bariatric Armrest, 24" (Std TIS), 30" (Supa), Duratek, PAIR	CA2514

## Tilt in Space Configura Bariatric 254kg (Dual Motor with Independent Legrest)

Product Code	Seat Height	Seat Width	Seat Dept	Select
CR5454	406mm (16")	609mm (24")	508mm (20") - 558mm (22")	<input type="checkbox"/>
CR5455	406mm (16")	660mm (26")	508mm (20") - 558mm (22")	<input type="checkbox"/>
CR5456	406mm (16")	711mm (28")	508mm (20") - 558mm (22")	<input type="checkbox"/>
CR5457	457mm (18")	609mm (24")	508mm (20") - 558mm (22")	<input type="checkbox"/>
CR5458	457mm (18")	660mm (26")	508mm (20") - 558mm (22")	<input type="checkbox"/>
CR5459	457mm (18")	711mm (28")	508mm (20") - 558mm (22")	<input type="checkbox"/>
CR5460	508mm (20")	609mm (24")	508mm (20") - 558mm (22")	<input type="checkbox"/>
CR5461	508mm (20")	660mm (26")	508mm (20") - 558mm (22")	<input type="checkbox"/>
CR5462	508mm (20")	711mm (28")	508mm (20") - 558mm (22")	<input type="checkbox"/>

The TIS Configura Bariatric has a standard seat depth of 20" or 22", as this adjustment is a built-in feature. For a seat depth of 18", the Configura Bariatric Depth Adjustment Kit accessory is required - CA2432



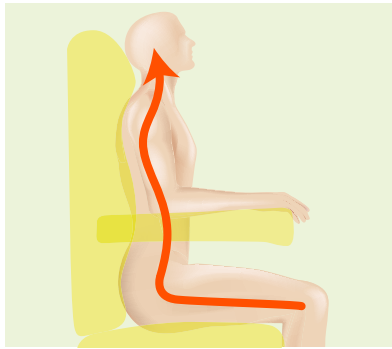
## PRESSURE

### Key thoughts:

- Selection of pressure cushions is a clinical decision which involves many variables including a risk assessment tool. Professional input from a Tissue Viability Nurse or District Nurse may be required at this stage.
- Vapour permeable fabric as standard on seat base and legrest.

### PRESSURE CARE OPTIONS

Description	Long description	Part number		Select
Visco (std)	<b>Prevention:</b> Heat sensitive memory foam moulds to the user providing maximum support and pressure reduction. Suitable for users who are at risk of pressure damage.	as per (std)		<input type="checkbox"/>
Castellated	<b>Prevention:</b> Castellated, pressure reducing cushion for users who cannot tolerate Visco foam. Similar in performance to the Visco cushion.	CA2434		<input type="checkbox"/>
Cushionair Alternating Seat Cushion w/ pump	<b>Management:</b> Powered alternating air cushion which coupled with the memory foam and vapour permeable fabric of the overlay provides excellent comfort, stability and pressure relief. 254kg weight capacity.	CA2720		<input type="checkbox"/>



# POSTURE

## Key thought:

- Tilt-in-space can significantly improve midline sitting so increased lateral support may not be necessary if the user tends to slump mildly to one side.

## POSTURE MANAGEMENT OPTIONS

Description	Long description	Part number		Select
Multi-adjustable Pillow Backrest (std)	<b>Accommodation:</b> each pillow is height adjustable and filling can be customised to the user. Offering mild to moderate postural support, the Multi-adjustable Pillow Backrest is highly effective for users with a kyphosis or a scoliosis. Excellent for postural accommodation and comfort.	(std)		<input type="checkbox"/>
2 x Lateral Supports	<b>Accommodation:</b> Lateral supports to fit underneath the backrest pillows to provide mild lateral support combined with the comfort and adjustability of the Multi-Adjustable Pillow Backrest. (As used with the Adjustable Lateral Support System below).	CA2413		<input type="checkbox"/>
Profiled Headrest	Suitable for users with reduced head control. Fits over the shoulders.	CA2448		<input type="checkbox"/>



# EXTRAS

Description	Long description	Part number		Select
Channel legrest	Provides side support on legrest to reduce abduction.	CA2446		<input type="checkbox"/>
Right hand control (std)		(std)		<input type="checkbox"/>
Left hand control		(std)		<input type="checkbox"/>
Rise Setting (std)	10 degrees of tilt.	(std)		<input type="checkbox"/>
Optional Adjustment	30 degrees of tilt.	Only Available on 254 kg TIS Model		<input type="checkbox"/>
Battery Back Up	Provides Battery Back Up in case of power cuts. Approx 20 cycles.	CA2402		<input type="checkbox"/>
Duratek fabric on backrest	Non-pressure reducing.	CA2480 254 kg BRMAPKT-0- CFBSUP-020 317 kg		<input type="checkbox"/>

**OVERALL DIMENSIONS**

(please note these are approximate)

	Bariatric and Bariatric Tilt-in-space 254 kg	Bariatric 317 kg
Complete chair	92 kg	104 kg
Backrest	20 kg	25 kg
Base part only including components	72 kg	80 kg
<b>In normal sitting</b>		
Height	1150 mm	1150 mm
Width	1050 mm	1300 mm
Depth	800 mm	800 mm
<b>In recline</b>		
Height	1050 mm	1050 mm
Width	1050 mm	1050 mm
Depth	1700 mm	1700 mm
<b>In rise</b>		
Height	1450 mm	1450 mm
Width	1050 mm	1050 mm
Depth	1000 mm	1000 mm
Backrest height	1150 mm	1150 mm
Floor to top of arms	630 mm	630 mm
Arm height	200 mm	200 mm
Height to front of seat in rise	500 mm	500 mm
Height to back of seat in rise	650 mm	650 mm

**CLEANING  
INSTRUCTIONS  
FOR THE FABRIC**

Clean and care for the fabric on a regular basis and it will maintain its condition and appearance.

The new generation of Microfibre cleaning cloths without soap are extremely effective for general care and maintenance. You can also wipe clean regularly with a damp cloth to remove dust particles and light soiling. It is recommended to vacuum the upholstery once a week.

Most stains can be removed by wiping clean. Remove spillages promptly (within 15 minutes) with cold water. For extreme soiling control use a 5% Sodium Hypochlorite (Bleach) solution.

Do not machine wash or dry clean.

Do not apply other chemicals such as polish, solvents or stain remover.

# NOTES

A series of horizontal dotted lines for taking notes.



At Enable we source quality, affordable and innovative products globally and have them available for fast delivery. But we do more than just provide products.

We give the knowledge and support to help our customers grow their business and deliver better life care.



ENABLE LIFECARE PTY LTD

T 1300 370 370

[enablelifecare.com.au](http://enablelifecare.com.au)