

carolyn keys

Handmade modern jewelry for spirited women



CHECK OUT MY WEBSITE FOR MORE PHOTOS AND INFORMATION ABOUT THE WORK



WWW.CAROLYNKEYS.COM

email: info@carolynkeys.com

instagram: @carolynkeysjewelry

BOLD HAND-FABRICATED COLLECTION
BRASS, STERLING SILVER OR 14K GOLD FILL
★ = bestseller

- Hand-fabricated in brass, sterling silver or 14K gold fill
- All ear wires and findings are sterling silver or 14K gold fill
- Hand hammered texture (except Maxima Leaf Punk)



SWISH EARRING

Brass: 19-E-SWI-B \$95/\$190
Silver: 19-E-SWI-S \$140/\$280
14k GF: 19-E-SWI-G \$180/\$360



OMA EARRING

Brass: 19-E-OMA-B \$95/\$190
Silver: 19-E-OMA-S \$145/\$290
14k GF: 19-E-OMA-G \$195/\$390



SLINK EARRING

Brass: 19-E-SLI-B \$65/\$130
Silver: 19-E-SLI-S \$80/\$160
14k GF: 19-E-SLI-G \$95/\$190



MAXIMA PUNK EARRING

Brass: 17-E-MP-B \$95/\$190
Silver: 17-E-MP-S \$140/\$280
14k GF: 17-E-MP-G \$180/\$360



DIAMOND LINA EARRING

Brass: 17-E-DL-B \$90/\$180
Silver: 17-E-DL-S \$110/\$220
14k GF: 17-E-DL-G \$140/\$280



CLOUD LINA EARRING

Brass: 17-E-CL-B \$90/\$180
Silver: 17-E-CL-S \$110/\$220
14k GF: 17-E-CL-G \$140/\$280



SWISH SMALL EARRING

Brass: 22-E-SSM-B \$80/\$160
Silver: 22-E-SSM-S \$110/\$220
14k GF: 22-E-SSM-G \$145/\$290



OLA EARRING

Brass: 19-E-OLA-B \$65/\$130
Silver: 19-E-OLA-S \$90/\$180
14k GF: 19-E-OLA-G \$120/\$240



SLINK SMALL EARRING

Brass: 21-E-SS-B \$60/\$120
Silver: 21-E-SS-S \$75/\$150
14k GF: 21-E-SS-G \$90/\$180



PUNK EARRING

Brass: 17-E-PUN-B \$60/\$120
Silver: 17-E-PUN-S \$75/\$150
14k GF: 17-E-PUN-G \$90/\$180



DIAMOND LINA SMALL EARRING

Brass: 18-E-DLS-B \$75/\$150
Silver: 18-E-DLS-S \$95/\$190
14k GF: 18E-DLS-G \$120/\$240



CLOUD LINA SMALL EARRING

Brass: 18-E-CLS-B \$75/\$150
Silver: 18-E-CLS-S \$95/\$190
14k GF: 18E-CLS-G \$120/\$240



SAGE EARRING

Brass: 19-E-SAG-B \$65/\$130
Silver: 19-E-SAG-S \$90/\$180
14k GF: 19-E-SAG-G \$120/\$240



ANYA EARRING

Brass: 23-E-ANY-B \$95/\$190
Silver: 23-E-ANY-S \$140/\$280
14k GF: 23-E-ANY-G \$180/\$360



JULES EARRING

Brass: 23-E-JUL-B \$75/\$150
Silver: 23-E-JUL-S \$95/\$190
14k GF: 23-E-JUL-G \$120/\$240



LIV EARRING

Brass: 22-E-LIV-B \$60/\$120
Silver: 22-E-LIV-S \$75/\$150
14k GF: 22-E-LIV-G \$90/\$180



MAEVE EARRING

Brass: 22-E-MVE-B \$60/\$120
Silver: 22-E-MVE-S \$75/\$150
14k GF: 22-E-MVE-G \$90/\$180



MOKI EARRING

Brass: 22-E-MOK-B \$60/\$120
Silver: 22-E-MOK-S \$75/\$150
14k GF: 22-E-MOK-G \$90/\$180



CAMILLE EARRING

Brass: 23-E-CAM-B \$75/\$150
Silver: 23-E-CAM-S \$95/\$190
14k GF: 23-E-CAM-G \$120/\$240



LEAH EARRING

Brass: 23-E-LEA-B \$60/\$120
Silver: 23-E-LEA-S \$75/\$150
14k GF: 23-E-LEA-G \$90/\$180



REMI EARRING

Brass: 23-E-REM-B \$55/\$110
Silver: 23-E-REM-S \$65/\$130
14k GF: 23-E-REM-G \$80/\$160



MAXIMA LEAF PUNK EARRING

Brass: 21-E-MLP-B \$95/\$190
Silver: 21-E-MLP-S \$140/\$280
14k GF: 21-E-MLP-G \$180/\$360



NINA EARRING

Brass: 17-E-NIN-B \$55/\$110
Silver: 17-E-NIN-S \$65/\$130
14k GF: 17-E-NIN-G \$80/\$160



MANOS EARRING

Brass: 20-E-MAN-B \$55/\$110
Silver: 20-E-MAN-S \$65/\$130
Gold Fill: 20-E-MAN-G \$80/\$160



WWW.CAROLYNKEYS.COM

email: info@carolynkeys.com

instagram: @carolynkeysjewelry

DELICATE HAND-FABRICATED COLLECTION

STERLING SILVER OR 14K GOLD FILL

★ = bestseller

- Hand-fabricated in sterling silver or 14K gold fill
- All ear wires, chains and findings are sterling silver or 14K gold fill
- Hand hammered finish on all metals
- Some styles have ebony accents

NEW FOR 2024



MARNI EARRING
Silver: 24-E-MAR-S \$120/\$240
Gold Fill: 24-E-MAR-G \$140/\$280



AVERY EARRING
Silver: 24-E-AVE-S \$70/\$140
Gold Fill: 24-E-AVE-G \$85/\$170



ZOE EARRING
Silver: 24-E-ZOE-S \$70/\$140
Gold Fill: 24-E-ZOE-G \$85/\$170



RAIN EARRING
Silver: 17-E-RAI-S \$60/\$120
Gold Fill: 17-E-RAI-G \$70/\$140



LUNA EARRING - mixed metal
S + B: 17-E-LUN-SB \$60/\$120
S + GF: 17-E-LUN-SG \$70/\$140



VIV EARRING
Silver: 17-E-VIV-S \$60/\$120
Gold Fill: 17-E-VIV-G \$70/\$140



LOLA EARRING
Silver: 20-E-LOL-S \$120/\$240
Gold Fill: 20-E-LOL-G \$140/\$280



ELSA EARRING
Silver: 20-E-ELS-S \$95/\$190
Gold Fill: 20-E-ELS-G \$120/\$240



NORA EARRING
Silver: 20-E-NOR-S \$70/\$140
Gold Fill: 20-E-NOR-G \$85/\$170



GIA EARRING
Silver: 20-E-GIA-S \$60/\$120
Gold Fill: 20-E-GIA-G \$70/\$140



★ TRIPLE ARC EARRING
Silver: 17-E-TA-S \$60/\$120
Gold Fill: 17-E-TA-G \$70/\$140



★ TRIPLE ARC NECKLACE
Silver: 17-N-TA-S \$47/\$94
Gold Fill: 17-N-TA-G \$60/\$120



Lola Earrings



KIRA EARRING
Silver: 17-E-KIR-S \$60/\$120
Gold Fill: 17-E-KIR-G \$70/\$140



PYRAMID NECKLACE
Silver: 17-N-PYR-S \$47/\$94
Gold Fill: 17-N-PYR-G \$60/\$120



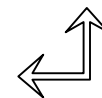
SIMONE EARRING
Silver: 17-E-SIM-S \$60/\$120
Gold Fill: 17-E-SIM-G \$70/\$140



TAI EARRING
Silver: 17-E-TAI-S \$60/\$120
Gold Fill: 17-E-TAI-G \$70/\$140



TAI NECKLACE
Silver: 17-N-TAI-S \$47/\$94
Gold Fill: 17-N-TAI-G \$60/\$120



THESE STYLES HAVE EBONY ACCENTS



Luna Earrings



WWW.CAROLYNKEYS.COM

email: info@carolynkeys.com

instagram: @carolynkeysjewelry

HAND-FABRICATED HOOP COLLECTION

- All styles are hand-fabricated and available in sterling silver or 14k gold fill. Some styles available in brass

- All Styles come with sterling silver or 14K gold fill posts and backs

★ = bestseller

NEW FOR 2024



MARTA HOOP SMALL
Silver: 24-E-MHS-S \$37/\$74
14k GF: 24-E-MHS-G \$42/\$84



MARTA HOOP MEDIUM
Silver: 24-E-MHM-S \$47/\$94
14k GF: 24-E-MHM-G \$55/\$110



MARTA HOOP LARGE
Silver: 24-E-MHL-S \$55/\$110
14k GF: 24-E-MHL-G \$65/\$130



BETTY HOOP SMALL
Silver: 24-E-BHS-S \$42/\$84
14k GF: 24-E-BHS-G \$55/\$110



BETTY HOOP MEDIUM
Silver: 24-E-BHM-S \$47/\$94
14k GF: 24-E-BHM-G \$60/\$120



BETTY HOOP LARGE
Silver: 24-E-BHL-S \$55/\$110
14k GF: 24-E-BHL-G \$65/\$130



TWIGGY HOOP SMALL
Silver: 23-E-TH-S-S \$37/\$74
14k GF: 23-E-TH-S-G \$42/\$84



★ **TWIGGY HOOP MEDIUM**
Silver: 23-E-TH-M-S \$47/\$94
14k GF: 23-E-TH-M-G \$55/\$110



TWIGGY HOOP LARGE
Silver: 24-E-TH-L-S \$55/\$110
14k GF: 24-E-TH-L-G \$65/\$130



★ **SIMPLE HOOP**
Silver: 17-E-SH-S \$47/\$94
Gold Fill: 17-E-SH-G \$55/\$110



DROP HOOP
Silver: 24-E-DRH-S \$47/\$94
Gold Fill: 24-E-DRH-G \$55/\$110



★ **DIAMOND HOOP**
Silver: 17-E-DH-S \$47/\$94
Gold Fill: 17-E-DH-G \$55/\$110



Small Coco Hoops



★ **MISHA HOOP - SMALL**
Brass: 23-E-MIS-B \$42/\$84
Silver: 23-E-MIS-S \$47/\$94
14k GF: 23-E-MIS-G \$60/\$120



MISHA HOOP - LARGE
Brass: 23-E-MIL-B \$47/\$94
Silver: 23-E-MIL-S \$60/\$120
14k GF: 23-E-MIL-G \$75/\$150



COCO HOOP - SMALL
Brass: 23-E-COS-B \$47/\$94
Silver: 23-E-COS-S \$60/\$120
14k GF: 23-E-COS-G \$75/\$150



COCO HOOP - LARGE
Brass: 23-E-COL-B \$60/\$120
Silver: 23-E-COL-S \$80/\$160
14k GF: 23-E-COL-G \$95/\$190



Coco and Misha Hoops



WWW.CAROLYNKEYS.COM

email: info@carolynkeys.com
instagram: @carolynkeysjewelry

CAST COLLECTION
BRASS OR STERLING SILVER

- Hand-fabricated original designs
cast in brass or sterling silver

- All ear wires, chains and findings
are 14K gold fill or sterling silver

★ = bestseller



BOA EARRING
Brass: 20-E-BOA-B \$60/\$120
Silver: 20-E-BOA-S \$75/\$150



BOA NECKLACE
Brass: 20-N-BOA-B \$47/\$94
Silver: 20-N-BOA-S \$60/\$120



★
LUZ EARRING
Brass: 19-E-LUZ-B \$60/\$120
Silver: 19-E-LUZ-S \$75/\$150



LUZ NECKLACE
Brass: 19-N-LUZ-B \$47/\$94
Silver: 19-N-LUZ-S \$55/\$110



ARCO EARRING
Brass: 20-E-ARC-B \$55/\$110
Silver: 20-E-ARC-S \$70/\$140



ARCO NECKLACE
Brass: 20-N-ARC-B \$47/\$94
Silver: 20-N-ARC-S \$55/\$110



MAMBA EARRING
Brass: 19-E-MAM-B \$60/\$120
Silver: 19-E-MAM-S \$75/\$150



MAMBA NECKLACE
Brass: 19-N-MAM-B \$47/\$94
Silver: 19-N-MAM-S \$60/\$120



NOVA EARRING
Brass: 17-E-NOV-B \$60/\$120
Silver: 17-E-NOV-S \$75/\$150



NOVA NECKLACE
Brass: 17-N-NOV-B \$47/\$94
Silver: 17-N-NOV-S \$55/\$110



BRANCH STUD LONG
Brass: 23-E-BSL-B \$55/\$110
Silver: 23-E-BSL-S \$70/\$140



LONG BRANCH NECKLACE
Brass: 23-N-LB-B \$47/\$94
Silver: 23-N-LB-S \$55/\$110



CALLA EARRING
Brass: 21-E-CAL-B \$47/\$94
Silver: 21-E-CAL-S \$55/\$110



CALLA NECKLACE
Brass: 21-N-CAL-B \$47/\$94
Silver: 21-N-CAL-S \$55/\$110



KIKO EARRING
Brass: 21-E-KIK-B \$60/\$120
Silver: 21-E-KIK-S \$75/\$150



KIKO NECKLACE
Brass: 21-N-KIK-B \$47/\$94
Silver: 21-N-KIK-S \$60/\$120



ADELE EARRING
Brass: 19-E-ADE-B \$60/\$120
Silver: 19-E-ADE-S \$75/\$150



THORN HOOP
Brass: 23-E-THO-B \$55/\$110
Silver: 23-E-THO-S \$70/\$140



HALO EARRING - ONYX
Brass: 23-E-HAL-BO \$85/\$170
Silver: 23-E-HAL-SO \$90/\$180



HALO NECKLACE - ONYX
Brass: 23-N-HAL-BO \$75/\$150
Silver: 23-N-HAL-SO \$75/\$150



SOFI EARRING - ONYX
Brass: 23-E-SOF-BO \$85/\$170
Silver: 23-E-SOF-SO \$90/\$180



SOFI NECKLACE - ONYX
Brass: 23-N-SOF-BO \$75/\$150
Silver: 23-N-SOF-SO \$75/\$150



OLIVIA HOOP
Brass: 18-E-OLI-B \$85/\$170
Silver: 18-E-OLI-S \$110/\$220



★
OSSO HOOP
Brass: 18-E-OSS-B \$55/\$110
Silver: 18-E-OSS-S \$70/\$140

HALO EARRING - TURQ
Brass: 23-E-HAL-BT \$85/\$170
Silver: 23-E-HAL-ST \$90/\$180

HALO NECKLACE - TURQ
Brass: 23-N-HAL-BT \$75/\$150
Silver: 23-N-HAL-ST \$75/\$150

SOFI EARRING - TURQ
Brass: 23-E-SOF-BT \$85/\$170
Silver: 23-E-SOF-ST \$90/\$180

SOFI NECKLACE - TURQ
Brass: 23-N-SOF-BT \$75/\$150
Silver: 23-N-SOF-ST \$75/\$150



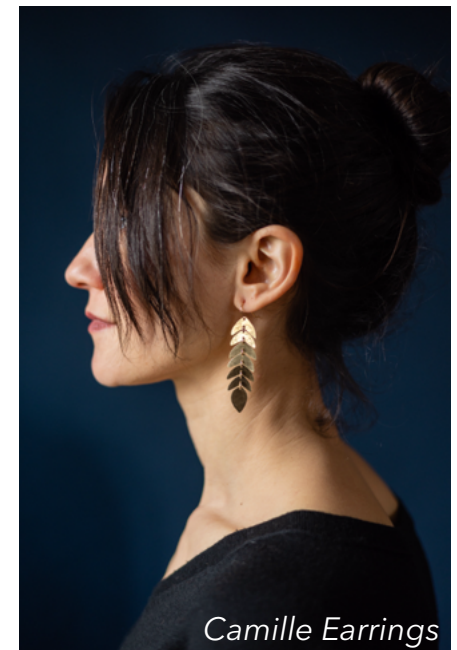
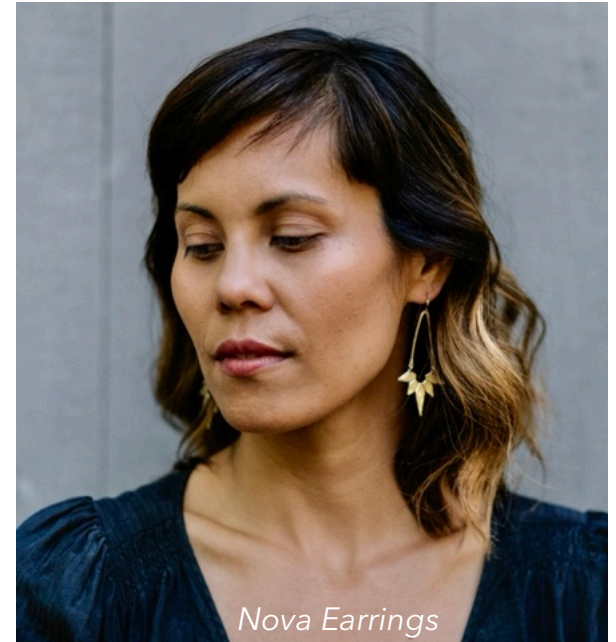
WWW.CAROLYNKEYS.COM

email: info@carolynkeys.com

instagram: @carolynkeysjewelry

LOOKBOOK

Visit my website for more photos and info about the work





WWW.CAROLYNKEYS.COM

email: info@carolynkeys.com

instagram: @carolynkeysjewelry

PETITE CAST COLLECTION

BRASS OR STERLING SILVER

- Hand-fabricated original designs cast in brass or sterling silver

- All ear wires, chains and findings are 14K gold fill or sterling silver

★ = bestseller



UNI HOOP

Brass: 22-E-UNI-B \$47/\$94
Silver: 22-E-UNI-S \$55/\$110



PUNK STUD

Brass: 22-E-PS-B \$47/\$94
Silver: 22-E-PS-S \$55/\$110



BLAST HOOP

Brass: 23-E-BLA-B \$42/\$84
Silver: 23-E-BLA-S \$47/\$94



ONDA HOOP

Brass: 22-E-OND-B \$47/\$94
Silver: 22-E-OND-S \$55/\$110



IDA EARRING

Brass: 19-E-IDA-B \$42/\$84
Silver: 19-E-IDA-S \$47/\$94



WISHBONE NECKLACE

Brass: 17-N-WIS-B \$47/\$94
Silver: 17-N-WIS-S \$55/\$110



OSA EARRING

Brass: 22-E-OSA-B \$47/\$94
Silver: 22-E-OSA-S \$55/\$110



OSA NECKLACE

Brass: 22-N-OSA-B \$42/\$84
Silver: 22-N-OSA-S \$42/\$84



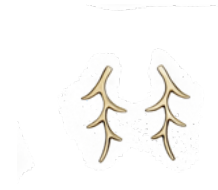
SAKA STUD

Brass: 22-E-SAK-B \$42/\$84
Silver: 22-E-SAK-S \$47/\$94



SAKA NECKLACE

Brass: 22-N-SAK-B \$42/\$84
Silver: 22-N-SAK-S \$42/\$84



BRANCH STUD SMALL

Brass: 23-E-BSS-B \$42/\$84
Silver: 23-E-BSS-S \$47/\$94



SMALL BRANCH NECKLACE

Brass: 23-N-SB-B \$42/\$84
Silver: 23-N-SB-S \$42/\$84



VELA EARRING

Brass: 22-E-VEL-B \$42/\$84
Silver: 22-E-VEL-S \$47/\$94



VELA NECKLACE

Brass: 22-N-VEL-B \$42/\$84
Silver: 22-N-VEL-S \$42/\$84



LILA EARRING

Brass: 22-E-LIL-B \$42/\$84
Silver: 22-E-LIL-S \$47/\$94



LILA NECKLACE

Brass: 22-N-LIL-B \$42/\$84
Silver: 22-N-LIL-S \$42/\$84



JASPER STUD

Brass: 21-E-JSP-B \$42/\$84
Silver: 21-E-JSP-S \$47/\$94



JASPER NECKLACE

Brass: 21-N-JSP-B \$42/\$84
Silver: 21-N-JSP-S \$42/\$84



OJO STUD

Brass: 19-E-OJO-B \$32/\$64
Silver: 19-E-OJO-S \$37/\$74



OJITO NECKLACE

Brass: 19-N-OJI-B \$42/\$84
Silver: 19-N-OJI-S \$42/\$84



MANITO STUD

Brass: 21-E-MAN-B \$32/\$64
Silver: 21-E-MAN-S \$37/\$74



MANITO NECKLACE

Brass: 21-N-MAN-B \$42/\$84
Silver: 21-N-MAN-S \$42/\$84



SYLVIA EARRING

Brass: 19-E-SYL-B \$42/\$84
Silver: 19-E-SYL-S \$47/\$94



SYLVIA NECKLACE

Brass: 19-N-SYL-B \$42/\$84
Silver: 19-N-SYL-S \$42/\$84



WWW.CAROLYNKEYS.COM

email: info@carolynkeys.com

instagram: @carolynkeysjewelry

CUFF COLLECTIONS

TOP LEFT: Hand-fabricated original designs cast in brass or sterling silver

BOTTOM RIGHT: All hand-fabricated styles with a hammered finish available in brass, silver or 14K gold fill

★ = bestseller



LATTICE CUFF

Brass: 18-B-LAT-B \$90/\$180
Silver: 18-B-LAT-S \$125/\$250



RIVER CUFF

Brass: 19-B-RIV-B \$125/\$250
Silver: 19-B-RIV-S \$175/\$350



TULA CUFF

Brass: 20-B-TUL-B \$90/\$180
Silver: 20-B-TUL-S \$125/\$250



FLO CUFF

Brass: 17-B-FLO-B \$42/\$84
Silver: 17-B-FLO-S \$60/\$120



RIDGE CUFF

Brass: 21-B-RID-B \$75/\$150
Silver: 21-B-RID-S \$95/\$190



ZIGZAG CUFF

Brass: 22-B-ZIG-B \$42/\$84
Silver: 22-B-ZIG-S \$60/\$120



ZIPPY CUFF

Brass: 19-B-ZIP-B \$42/\$84
Silver: 19-B-ZIP-S \$60/\$120



MAYA CUFF

Brass: 19-B-MAY-B \$42/\$84
Silver: 19-B-MAY-S \$60/\$120



Medium + Wide Hammered Cuffs



Lattice Cuff



MEDIUM HAMMERED CUFF

Brass: 22-B-MHC-B \$42/\$84
Silver: 22-B-MHC-S \$70/\$140
14k GF: 22-B-MHC-G \$85/\$170

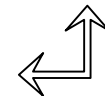


WIDE HAMMERED CUFF

Brass: 22-B-WHC-B \$55/\$110
Silver: 22-B-WHC-S \$75/\$150
14k GF: 22-B-WHC-G \$110/\$220



★
Brass: 17-B-HAM-B \$32/\$64 ea.
Silver: 17-B-HAM-S \$47/\$94 ea.
Gold: 17-B-HAM-G \$60/\$120 ea.



THESE STYLES ALSO
AVAILABLE IN 14K
GOLD FILL



www.carolynkeys.com

email: info@carolynkeys.com

instagram: [@carolynkeysjewelry](https://www.instagram.com/carolynkeysjewelry)

215.806.5439

About Carolyn Keys

Carolyn Keys is a line of handmade modern jewelry for vivacious, fashionable women. When you wear your Carolyn Keys art, you'll feel all the confidence needed to conquer the challenges of the day...and you'll look amazing all the while. Carolyn strives to create distinctive, paired down designs that transcend trends and amplify your individual style. Each piece is constructed with care using traditional techniques that are evident in the hand wrought finishes that feel right at home from the first wear.

carolyn
keys

CAROLYN KEYS JEWELRY WHOLESALER TERMS & CONTRACT

MINIMUMS: Opening Order minimum is \$350. Minimum amount for reorders is \$150.

PLACING AN ORDER:

-Email: A list of desired pieces can be emailed to info@carolynkeys.com.

-Web: I've partnered with Faire, a wholesale web platform. Please ask me for a link to order online through Faire.

PAYMENT: Paypal, Company Check or Credit Card accepted. First orders must be pre-paid via Paypal, check or credit card. All subsequent orders will be billed at the time of ship, and the order will not be released until payment is received.

PRICING: All prices are subject to change without notice. Our most current prices supersede any previous pricing.

NATURE OF HANDMADE PRODUCTS: All of our products are handmade. Due to the nature of our production method, each product may vary slightly.

CHANGES TO ORDERS: Any changes or cancellation to orders must be emailed to info@carolynkeys.com or by phone within three days of placing your order. Orders cannot be cancelled once they have been shipped.

DELIVERY & SHIPPING: Orders will be completed and shipped within 2-6 weeks from the date the order was placed. Actual shipping costs will be added to your final invoice and typically range from \$15-\$40 depending on the size of the order. We ship via USPS or UPS with insurance/delivery confirmation.

DAMAGES/SHORT/LOST GOODS: Please inspect all shipments immediately upon arrival. Contact Carolyn Keys at info@carolynkeys.com within 3 days of receipt of damaged, missing or defective shipments. Please keep all packaging materials so we may collect shipping insurance.

RETURNS / EXCHANGES: If you are not completely satisfied with the jewelry in your order for any reason, please contact us within three business days of receiving your order by phone or email info@carolynkeys.com. You will be able to exchange for items of equal value, or pay the difference of upgrading to something of a higher value.

REPAIRS: We will gladly repair or replace any piece that breaks while on display at your store within 90 days of shipment.

By becoming a wholesale retailer of Carolyn Keys, you are agreeing to these terms and conditions. Questions or concerns, please feel free to email us at info@carolynkeys.com