



ThunderCap[®]
INSANELY CALM™

FOR A

Calmer Dog

FITTING INSTRUCTIONS

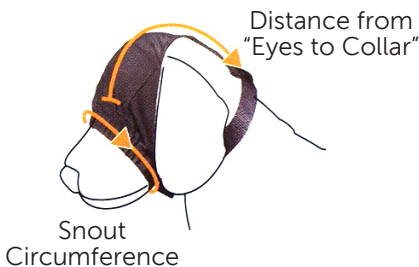
HOW IT WORKS

The ThunderCap is a wonderful tool for easing your dog's anxiety in high-stress situations. The ThunderCap reduces visual stimuli and helps your dog to remain comfortable, overcome his fearfulness and increase his confidence. The single-panel fabric window does not blind your dog, but simply filters his view. Try it for yourself — you'll see that while your vision is somewhat limited, you're still able to comfortably and confidently make out shapes.

- **Allows dog sufficient vision to easily navigate surroundings**
- **Works with any standard dog collar**
- **Money-back guarantee**

READ BEFORE USING YOUR THUNDERCAP

Familiarize your pet with ThunderCap. Introduce ThunderCap to your dog slowly and with positive associations. When you fit ThunderCap, give your dog a favorite treat. Calmly slip ThunderCap on while praising your dog continuously. Give a treat while your dog is wearing ThunderCap, and then stop treats as you take it back off. During the acclimation period, we recommend putting ThunderCap on your dog for no more than 2 or 3 minutes at a time. Do this several times within a span of 30 minutes. Gradually increase the time your dog wears the cap until he no longer paws at it. Discourage any attempts to paw or rub at the ThunderCap by distracting your dog with a bone or other yummy treat.

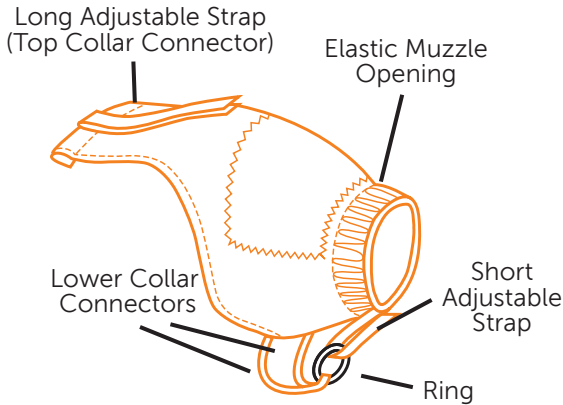


SIZING CHART

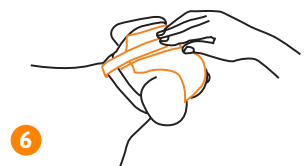
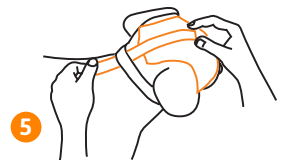
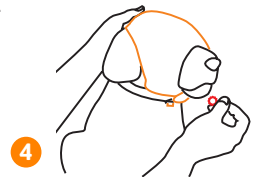
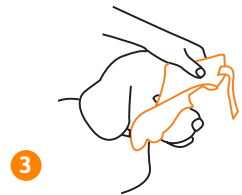
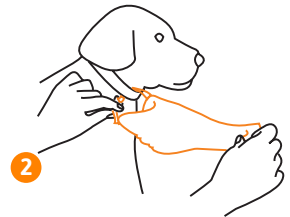
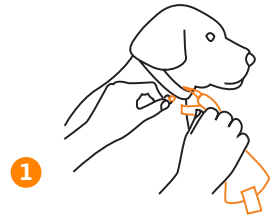
SIZE	SNOUT CIRCUMFERENCE	DISTANCE FROM EYES TO COLLAR
XS	3" – 6"	2.5" – 5"
S	5" – 8"	5" – 9"
M	7" – 10"	7" – 12"
L	7" – 10"	9" – 16"



FITTING INSTRUCTIONS



- 1 Open the **Short Adjustable Strap** and slide the ring off. Slip the **Ring** and **Lower Collar Connectors** down between your dog's neck and his collar.
- 2 Firmly fasten the **Ring** back onto the **Short Adjustable Strap**. Guide the **Lower Collar Connectors** directly under your dog's jaw.
- 3 Slip the **Elastic Muzzle Opening** over your dog's muzzle.
- 4 Pull the long section over your dog's head to the back of his neck. Give your dog a treat while praising him.
- 5 Open the **Long Adjustable Strap** and slip it under the collar at the back of the neck.
- 6 Firmly secure the **Long Adjustable Strap**. ThunderCap should fit snugly, but not tightly over your dog's face. The fabric window should be positioned over your dog's eyes.



ThunderCap is designed to help reduce your dog's anxiety level in stressful situations. Sometime the situation may require professional assistance. We recommend talking with your veterinarian, behaviorist or a qualified trainer who may provide additional advice in reducing your dog's anxious behavior.