

# **Disruptor™ 5293 PAC-S** **Filtration Media**

**June 2022**

More about the technology and its performance.

# Document content Guide

## 1. What is Disruptor™ 5293 PAC-S Technology?

- a. What makes the Disruptor™ Filter Different? Pg 3
- b. Additional benefits Pg 3
- c. How does it work? Pg 3
- d. Disruptor™ under the microscope Pg 4
- e. Disruptor™ technology compared Pg 4
- f. Certification Pg 5

## 2. Disruptor Media Test Reports

- a. Bacteria, Virus and Cysts Pg 6-7
- b. E. Coli Pg 8
- c. Endotoxins Pg 9
- d. Chlorine Pg 10
- e. Lead Pg 11
- f. Emerging Contaminants/Trace Pharmaceuticals Pg 12-14

# What is Disruptor™ 5293 PAC-S?

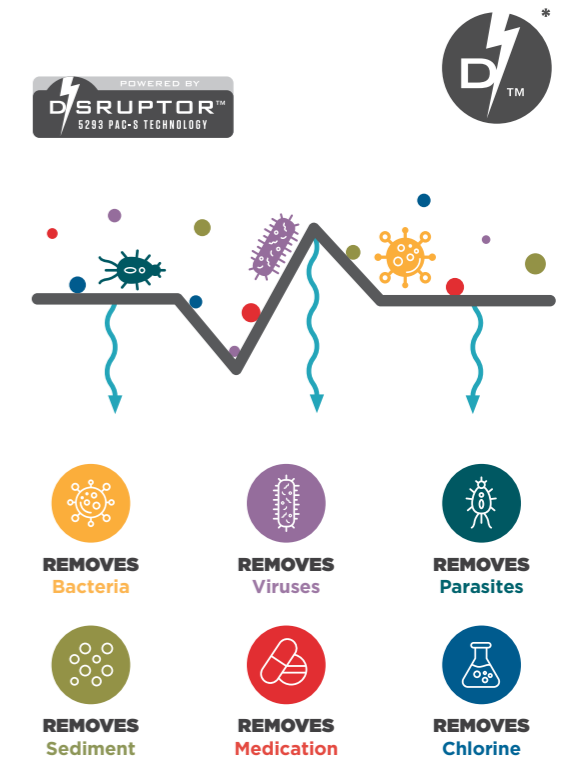
Disruptor™ is a breakthrough technology for the more demanding water purification needs that is not directly comparable to any other water purification media currently on the market.

## What makes the Disruptor™ filter different?

- **Electroadsorption** traps and removes viruses, bacteria and various other contaminants
- **Anti-microbial silver** disinfects
- **Powdered Activated Carbon** reduces odours and improves the taste

## Additional benefits:

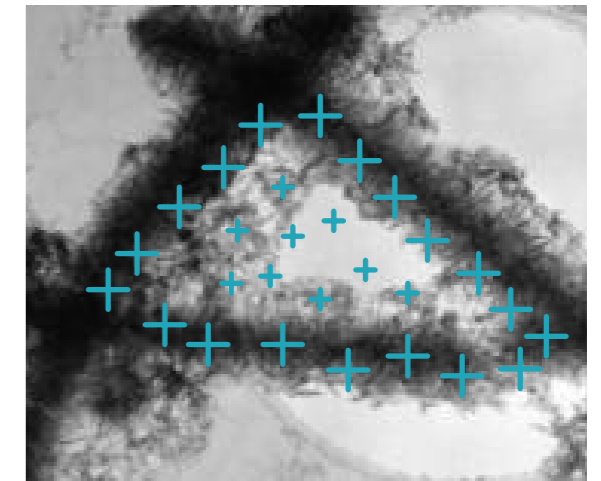
- **Energy savings and sustainability.**  
It offers very high flow rates at lower pressure drops compared to competing technologies with similar biological removal performance.
- **Maintains water integrity.**  
It effectively removes the pathogens and other contaminants whilst maintaining the minerals for taste.
- **No wastage whilst filtering.**  
As part of the filtration process, no water is wasted when using the Disruptor filter.



## How does it work?

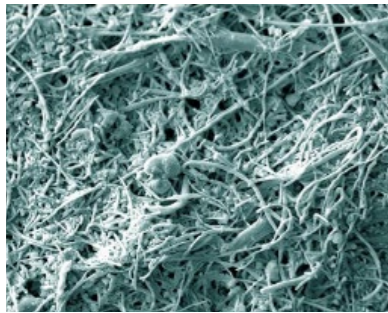
A positive electrical charge is created once water flows through the filter which attracts the negative charge present on most submicron contaminants. Due to the structure of the media, this charge causes the fibers to further overlap into the fibre pore structure.

The Disruptor™ is an electro-positive, wet-laid nonwoven media with a pore size of 1.2 to 1.5 microns. What makes this media unlike any other on the market is that despite the fact that it captures very small diameter substances and pathogens, it also remove larger particles mechanically.

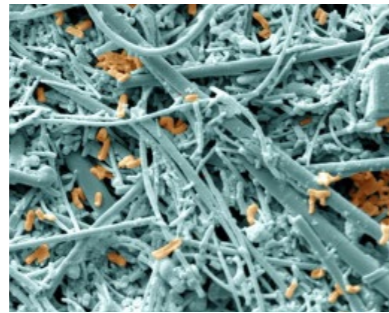


## Disruptor™ under the microscope

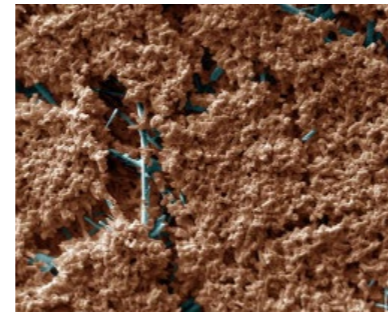
- The Disruptor™ technology removes hundreds of billions of pathogens per m<sup>2</sup> at 99.9999% efficiency:



1. No filtration/upstream side



2. 1 hour of filtration/upstream side



3. 8 hours of filtration/upstream side



## 3-in1 Disruptor™ 5293 PAC-S Technology Compared

Major contaminants	Disruptor™ 5293 PAC-S	Reverse Osmosis	Nano-filtration	Ultra-filtration	Micro-filtration	Ultra Violet	Carbon Block	Particulate Cartridges
Dissolved solids (minerals)		✓						
Chlorine	✓	✓					✓	
Particulates	✓	✓	✓	✓	✓		✓	✓
Endotoxins	✓	✓	✓	✓	✓			✓
Viruses (including E. coli)	✓	✓	✓			✓		
Bacteria	✓	✓	✓	✓	✓	✓	✓	✓
Cysts & parasites	✓	✓	✓	✓	✓	✓	✓	✓
Polysaccharides (TEP)	✓	✓	✓	✓	✓			
Colloids	✓	✓	✓	✓				
Trace pharmaceuticals	✓	✓						
Chemicals	✓	✓					✓	
Some heavy metals (lead, copper & iron)	✓	✓						
VOC (volatile organic compounds)	✓						✓	

### Did you know?

The initial development stages of the Disruptor technology is linked to NASA. In 2000 a small business innovation research (SBIR) contract was awarded by NASA's Johnson Space Center. In 2002 it started out as a Disruptor based NanoCeram filter which was introduced into Space Foundation's Space Technology Hall of Fame in 2005, and in 2006 it was exclusively licensed to Ahlstrom Munksjö.

## Certification

- ISO**  
9001, 14001, 45001 and Forestry for:  
Total production, management, environment, quality and safety systems.



- NSF 42**  
NSF follows the American National Standard Institute (ANSI) standards development process. NSF Standard 42 is a certification that is concerned with improving drinking water by reducing specific aesthetic or non-health-related contaminants that may be in the water. This certification applies to drinking water filtration.

## Product listing per NSF 42




---

**OFFICIAL LISTING**

NSF certifies that the products appearing on this Listing conform to the requirements of  
NSF/ANSI 42 - Drinking Water Treatment Units - Aesthetic Effects

This is the Official Listing recorded on November 2, 2018.

**Ahlstrom Filtration LLC**  
122 West Butler Street  
Mount Holly Springs, PA 17065  
717 486-3438

**Facility: Mount Holly Springs, PA**

**COMPONENTS: Filter Media** <sup>[1]</sup>

Grade 4616	Grade 5281	Grade 5282	Grade 5283	Grade 5283A
Grade 5283N	Grade 5284	Grade 5287	Grade 5288	Grade 5289
Grade 5293	Grade 5294	Grade 5297	Grade 5298	Grade 5299
Grade 5300	Grade 5301	Grade 5302	Grade 5303	



# DISRUPTOR™ MEDIA TEST REPORTS

## Bacteria, Virus and Cysts

<b>Test conducted by</b>	Ahlstrom Munksjö*
<b>Test conditions</b>	Water contaminated with: - Bacteria (Raoultella Terrigena) influent* concentration of 10 <sup>5</sup> or 10 <sup>6</sup> per ml - Virus (MS2 Bacteriophage) influent concentration of 10 <sup>5</sup> or 10 <sup>6</sup> per ml - Cyst (3 micron bead surrogate) influent concentration of 10 <sup>5</sup> or 10 <sup>6</sup> per ml

### Virus vs Bacteria

Viruses are the smallest form of micro-organisms capable of causing disease, particularly those of a fecal origin infectious to humans by waterborne transmission. Bacteria are typically single-celled micro-organisms that can also cause health problems in humans, animals or plants.

## Bacteria and Virus - 3rd Party Testing

<b>Test conducted by</b>	Biological Consulting Services
<b>Sample used</b>	Flat sheet with a surface area of 63.6 cm <sup>2</sup>
<b>Test conditions</b>	The water was contaminated with: - Bacteria (Raoultella Terrigena): influent concentration of 10 <sup>5</sup> - Virus (MS2 Bacteriophage): influent concentration of 10 <sup>5</sup>

## Example of COA\* for Disruptor 5293



### Quality Control Report by Reel

Page 2 09/17/2018 13:27  
 Warehouse MT, HOLLY SPRINGS Load Nr. 29223 Load Pos. 1 Ahlstrom Run Nr.  
 Order Nr. 2018251470 Order Lot 3 Order Pos. 1 Cust. Order 4500222354 Date of Manufacture 09/14/2018 - 09/16/2018  
 Customer AH22221948 KEMFLO (NANJING) ENVIRONMENTAL Grade MHLA5293 Product 5293 952.5 MM X 400 METERS  
 C.ProdName C.ProdCode Width 952.5 mm Weight 318.6 g/m<sup>2</sup> Color I

	BACTERIA PERCENT	BOND W GRAMS/IN	WEIGHT OSY	CHLORINE PPM	CYST PERCENT	WEIGHT GSM	THICK MICRONS	VIRUS PERCENT	BOND F GRAMS/IN	FRAZIER CFM	THICK MIL
203354/006	99.9999	82	9.48	0.23	99.9993	321.3	983.3	99.9996	84	5.6	38.7
203354/007	99.9999	99	9.29	0.23	99.9993	315.0	1006.7	99.9974	94	5.5	39.6
203354/008	99.9999	82	9.43	0.17	99.9993	319.7	986.7	99.9996	99	5.4	38.8
203354/009	99.9999	95	9.35	0.17	99.9993	317.0	1006.7	99.9999	84	5.6	39.6
203354/010	99.9999	94	9.44	0.12	99.9993	320.0	1006.7	99.9999	75	5.5	39.6
203354/011	99.9999	93	9.51	0.12	99.9994	322.3	1010.0	99.9997	85	5.3	39.8
203354/012	99.9999	110	9.52	0.12	99.9994	322.7	996.7	99.9959	97	5.3	39.2

Bacteria Removal % Cyst Removal % Virus Removal %

Tambours: Rolls				
203350/001: 532000034940	203350/003: 532000034942	203350/005: 532000034944	203350/007: 532000034946	203350/009: 532000034948
203350/011: 532000034950	203350/013: 532000034952	203350/015: 532000034954	203350/017: 532000034956	203350/019: 532000034958
203350/021: 532000034960	203350/023: 532000034962	203354/002: 532000034965	203354/003: 532000034966	203354/005: 532000034968
203354/007: 532000034970	203354/009: 532000034972	203354/011: 532000034974		

THIS COMPONENT IS CERTIFIED FOR MATERIAL SAFETY  
 REFER TO WQA'S WEBSITE AT WWW.WQA.ORG FOR SPECIFIC FIELD USE INSTRUCTIONS

THIS IS TO CERTIFY THAT THE MATERIAL IN THIS SHIPMENT MEETS THE AHLSTROM SPECIFICATION FOR THIS PRODUCT

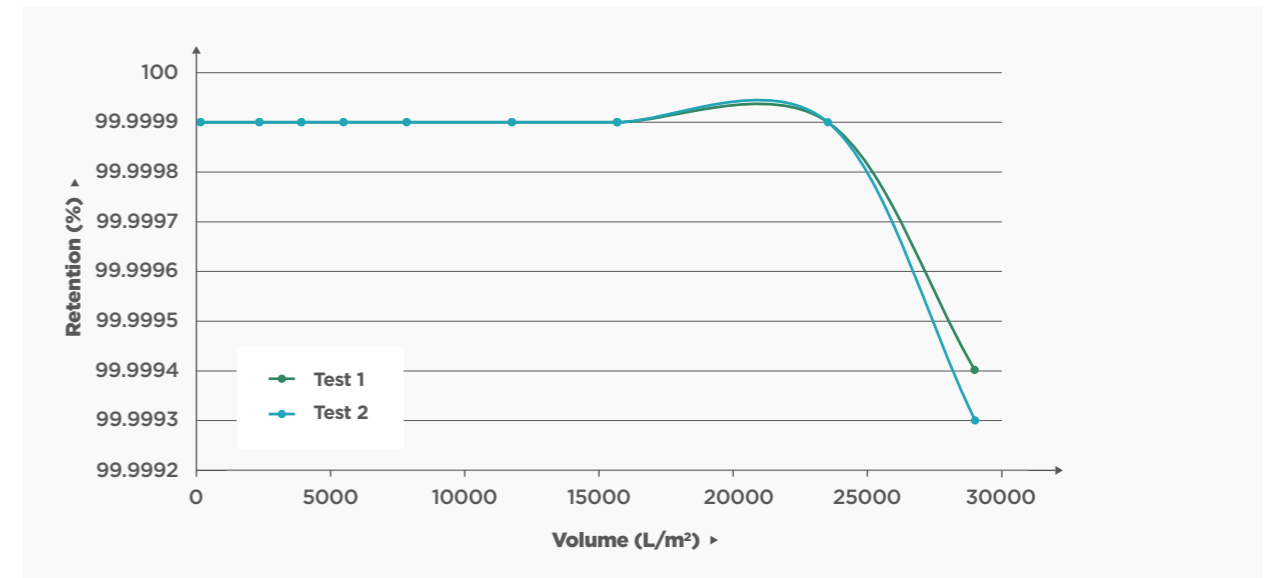
SIGNATURE DATE 9-17-2018

Ahlstrom Filtration, LLC (Advanced Filtration) Maintains the Following Certifications:  
 ISO 9001 and ISO 14001 (Mt Holly Site Only)

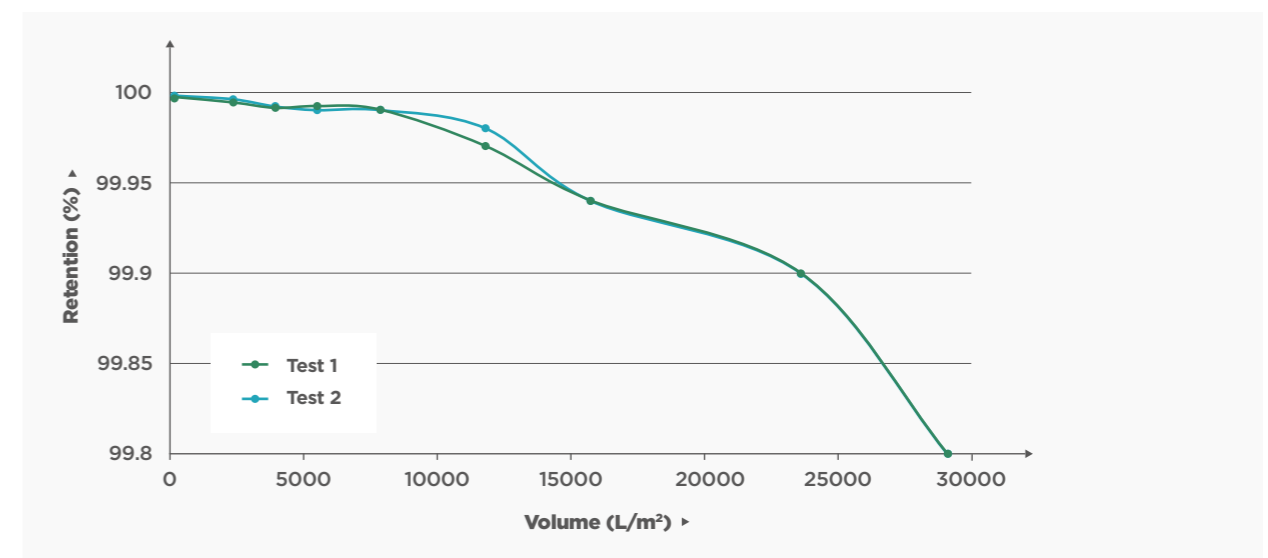
### Glossary

- \* **COA:** Certificate of Analysis.
- \* **Influent:** Water that flows in, usually the raw, untreated water.
- \* **Ahlstrom Munksjö:** A multi-billion dollar, globally recognised company that is currently one of the world's leading players in sustainable and innovative fiber solutions.

## Bacteria Retention



## Virus Retention



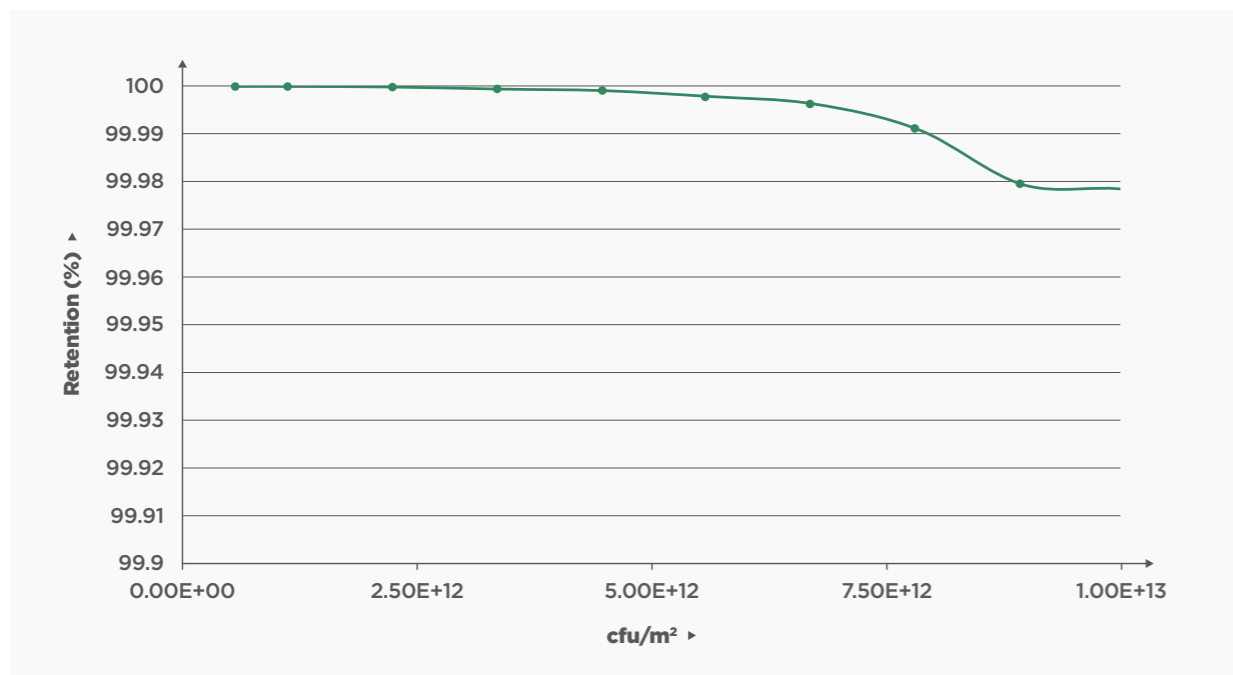
## E. Coli Capacity

<b>Test conducted by</b>	Ahlstrom Munksjö
<b>Flow rate</b>	40 litres/m2/min
<b>Test conditions</b>	<ul style="list-style-type: none"> <li>- Water: Ringer</li> <li>- Bacteria - E. Coli</li> <li>- Internal Protocol used: TM 140</li> <li>- Temperature 22°C ± 1°C</li> <li>- pH 7.75 ± 0.25</li> <li>- Soaking: few seconds with DI water*</li> <li>- Analysis: ATP metry*</li> </ul>

### What is E. Coli?

A bacteria that is commonly found in the lower intestine of warm-blooded organisms. Most strains are harmless, but some can cause serious food poisoning and may lead to a life-threatening disease especially in cases of young children and older people.

## E. Coli Retention



## Endotoxin or Lipopolysaccharide (LPS)

<b>Case study conducted by</b>	Ahlstrom Munksjö
<b>Findings</b>	<p>By the end of the study each of the discs had been challenged with 3.85 x 10<sup>6</sup> EU. The Disruptor range removed a higher percentage of endotoxin than Millipore MF filters.</p> <p>Despite the MF filters having a smaller pore size, the Disruptor removed more endotoxins. This shows that the charge is more effective in retaining endotoxins than the pore size.</p>

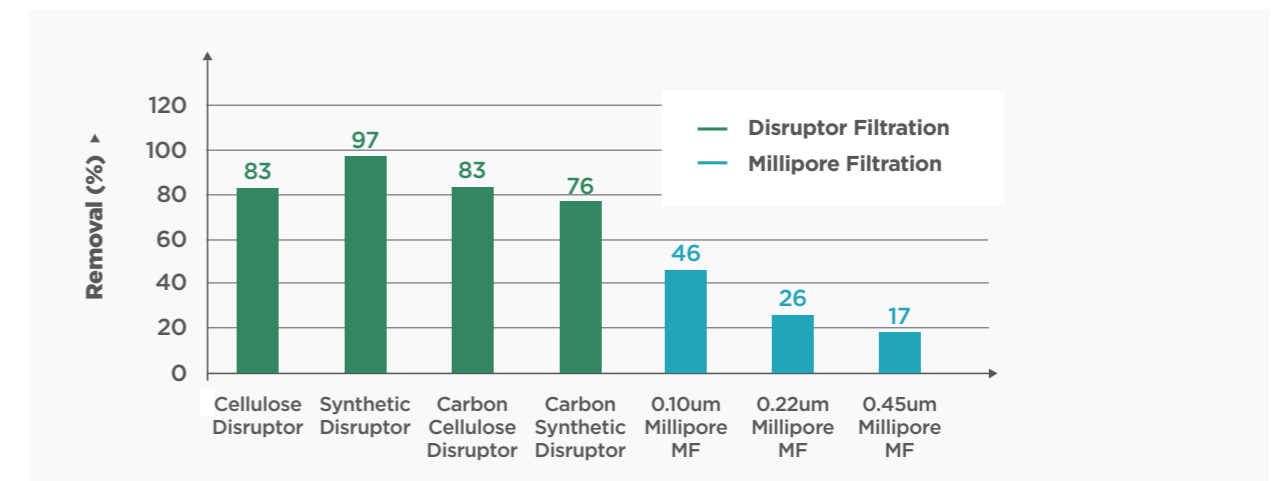
### What are Endotoxins?

They are large molecules found in the outer membrane of gram-negative bacteria that can cause severe immune responses in people such as:


- Elevated temperature
- Increased respiration
- Decreased blood pressure
- Endotoxin shocks (this can be fatal)

**Note:** the case study was done with lower grade disruptor medias than the 5293 PAC-S used in JoJo's Filtration range, but has been included to showcase the performance capabilities of the filter media.

## Endotoxin Retention - Case Study



## Endotoxin Retention - 3rd Party Test Results



**Northview Laboratories**

**CERTIFICATE OF ANALYSIS**

---

<b>Client:</b> HEATHER MOWERS AHLSTROM FILTRATION LLC 122 WEST BUTLER ST MOUNT HOLLY SPRINGS PA 17065	<b>Assignment No.:</b> 09A0800341 <b>PO No.:</b> 4500426032 <b>Page:</b> 1 of 1
--	---

---

**Product Tested:** Misc. Product  
**Date Received:** 11-Jan-2008  
**Test/Method:** BET Kinetic- Medical Devices, USP <85>  
**Specification:** Sample Endotoxin Less Than Limit

LAL Kinetic Method: Chromogenic  
 Endotoxin Limit: 0.50 EU/mL  
 Extraction Method: Immersion

Sample No.	Sample Description	Number of Samples	Test Extraction	Extract Dilution	Result	Positive Product Control	PPC Limit Check	Status
09S08001586*	Heat Seal 9830	1	75 mL	1:10	<0.05 EU/mL	83.6 %	VALID	Pass

---

**Evaluation**

\*09S08001586 This sample passes the test for bacterial endotoxins at 1/10 of the client specified endotoxin limit. Validation (Inhibition/Enhancement Testing) declined by client.

### Glossary

- **ATP Metry:** A molecular biology technique, based on the principle of bioluminescence, which allows measuring a quantity of ATP in a sample.
- **DI water:** De-ionized water.
- **cfu:** A colony-forming unit (CFU or cfu) is a measure of viable bacterial or fungal cells. CFU measures only viable cells. For convenience the results are given as CFU/ml (colony-forming units per milliliter) for liquids, and CFU/g (colony-forming units per gram) for solids.

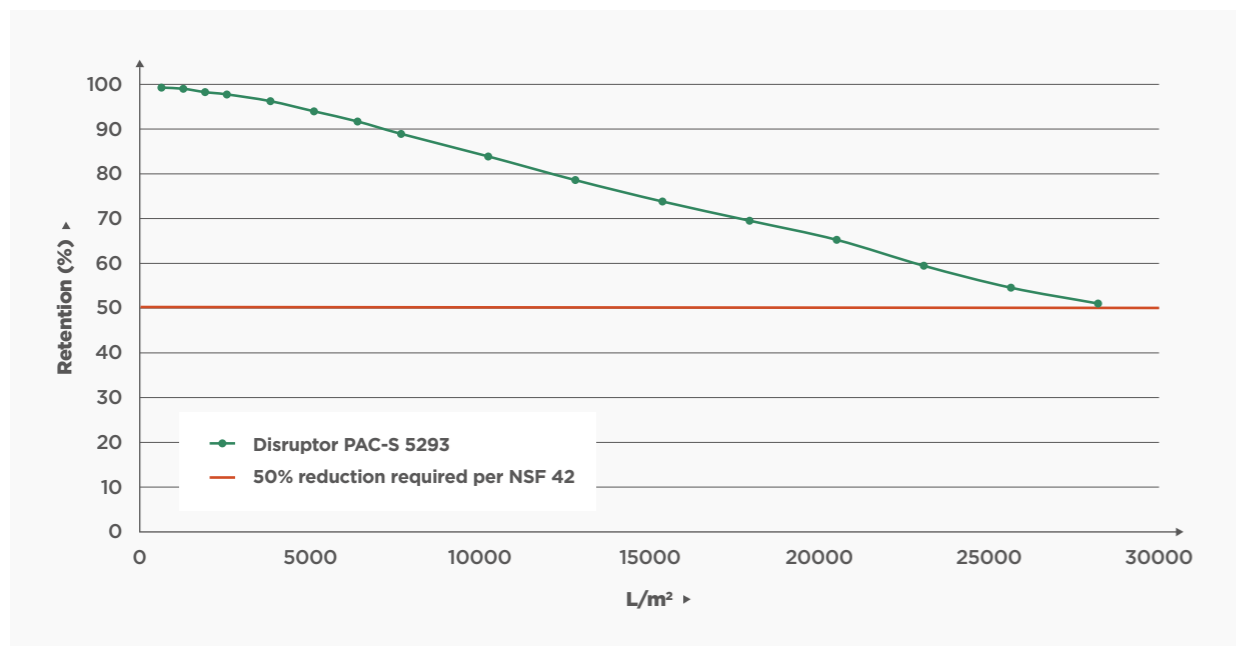
## Chlorine

<b>Test conducted by</b>	Ahlstrom Munksjö
<b>Sample used</b>	Flat sheet with a surface area of 3.9 cm <sup>2</sup>
<b>Flow rate</b>	15.9 ml/min
<b>Test conditions</b>	Tap water from Pont Eveque-PEV: - Temperature 20 °C - TDS* 310 mg/L - pH 7.4 - Chlorine initial concentration of 2 ppm* - Concentration range between 0 and 2 ppm

### NSF Requirements

- \* The NSF 42 standard requires 50% reduction for chlorine
- \* The Disruptor™ 5293 PAC-S is above 50% retention until 28 000 L/m

## Chlorine Retention



### Glossary

- \* **TDS:** Stands for total dissolved solids, and represents the total concentration of dissolved substances in water.
- \* **PPM:** Parts per million or ppm means out of a million. Usually describes the concentration of something in water or soil. One ppm is equivalent to 1 milligram of something per liter of water (mg/l) or 1 milligram of something per kilogram soil (mg/kg).

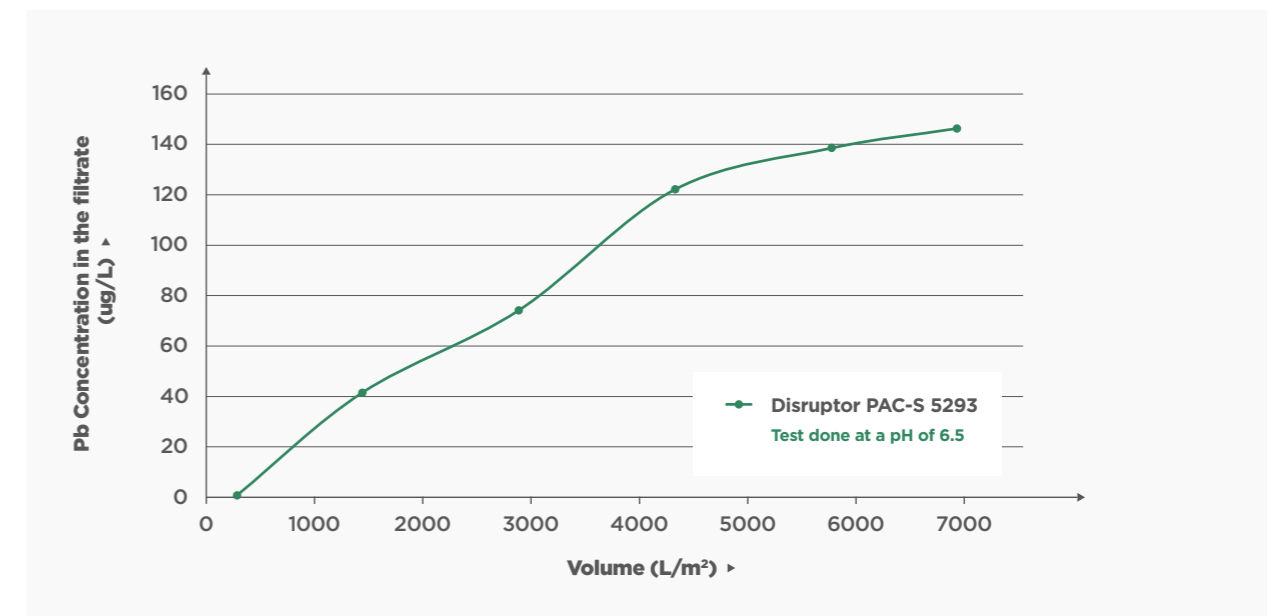
## Lead - 3rd Party Testing

<b>Test conducted by</b>	Aquadiagnostics (recognised by Water Quality Association, USA)
<b>Sample used</b>	Flat sheet with a surface area of 17.3 cm <sup>2</sup>
<b>Pressure/Flow rate</b>	Pressure maintained at 0.65 bar and measurement of the flow rate variation

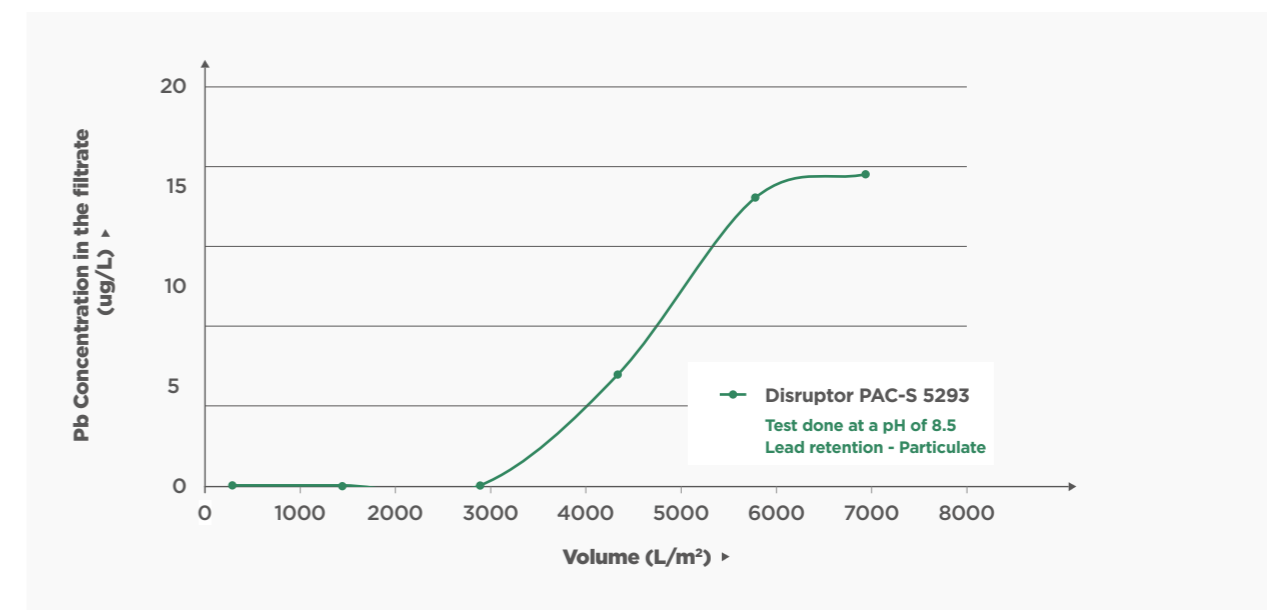
### Lead Health Effects

The widespread use of lead has resulted in extensive environmental contamination. At high levels of exposure (or long term exposure), it attacks the brain and central nervous system which can lead to a series of illnesses and disorders.

## Lead Retention - Dissolved



## Lead Retention - Particulate



## Emerging Contaminants\* - 3rd Party Tests

<b>Test conducted by</b>	NSF International Laboratories
<b>Standard conducted under</b>	NSF 401
<b>Test conditions</b>	Testing based on a life estimation of 1000 litres/ft <sup>2</sup> * corresponding to 100% in the tables

### Prescription Drugs

**Phenytoin:** a anti-epileptic drug

**Atenolol:** a beta blocker drug

**Carbamazepine:** an anticonvulsant and mood-stabilizing drug

**Trimethoprim:** an antibiotic medication

**Estrone:** a prescription birth control drug

Analyte	Sample Point				
	50%	100%	150%	180%	200%
Phenytoin	Yes	Yes	Yes	Yes	Yes
Atenolol	Yes	No	No	No	No
Carbamazepine	Yes	Yes	No	No	No
Trimethoprim	Yes	Yes	Yes	Yes	No
Estrone	Yes	Yes	Yes	Yes	Yes

### Glossary

- \* **ft<sup>2</sup>:** Square feet
- \* **Analyte:** A substance whose chemical constituents are being identified and measured.
- \* **Emerging contaminants:** Contaminants such as pesticides, herbicides, prescription drugs and detergents.

### Chemical Compounds

**TCEP:** a chemical compound used as a flame retardant, plasticizer and viscosity regulator in various types of polymers including polyurethanes, polyester resins and polyacrylates

**TCP:** a chemical compound used as a flame retardant

**BPA (Bisphenol A):** a chemical compound used as a plasticizer

**Nonyl phenol:** a collection of compounds often used as a precursor to commercial detergent

Analyte	Sample Point				
	50%	100%	150%	180%	200%
TCEP	Yes	Yes	No	No	No
TCP	Yes	Yes	Yes	Yes	Yes
Bisphenol A	Yes	Yes	Yes	Yes	Yes
Nonyl phenol	Yes	Yes	Yes	Yes	Yes

### NSF 401 Certification

The NSF 401 filter certification is for "incidental contaminants and emerging compounds."

This means that the NSF Public Safety and Health Organization has verified that the Disruptor™ filter meets their high standards for emerging compound and incidental contaminant reduction through a variety of tests done by experts from NSF.

### Over-the-counter Medications

**Ibuprofen:** an over-the-counter pain reliever and anti-inflammatory medication

**Naproxen:** an over-the-counter pain reliever and anti-inflammatory medication

**DEET (N,N-Diethyl-meta-toluamide):** a pesticide and common active ingredient in insect repellents

**Metolachlor:** an organic compound that is widely used as an herbicide

**Linuron:** a herbicide often used in the control of grasses and weeds

Analyte	Sample Point				
	50%	100%	150%	180%	200%
Ibuprofen	Yes	Yes	No	No	No
Naproxen	Yes	Yes	Yes	Yes	Yes
DEET	Yes	No	No	No	No
Metolachlor	Yes	Yes	Yes	No	No
Linuron	Yes	Yes	Yes	Yes	Yes

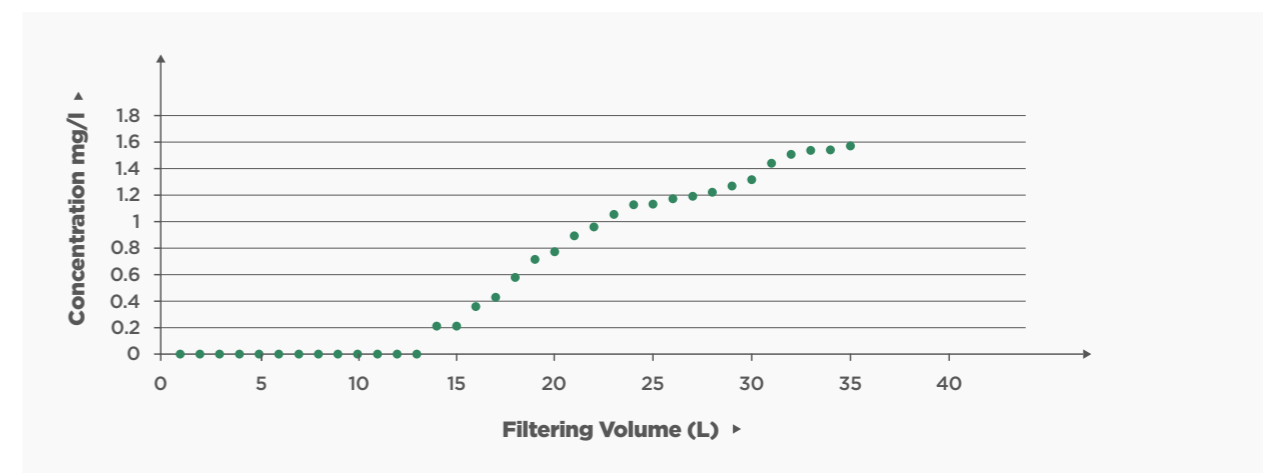
## Other Trace Pharmaceutical/Micro Contaminant Reduction Results

Test conducted by

Ahlstrom Munksjö

### Penicillin G Removal

**Penicillin G** was used for testing as a representative antibiotic. It was first studied using a challenge solution of 2 mg/l. This graph shows that the entire antibiotic was removed from 13 liters of water. At more typical concentration in the range of 2 micrograms per liter, a square foot of Disruptor could theoretically process more than 900,000 liters of water if it were free of other contaminants.



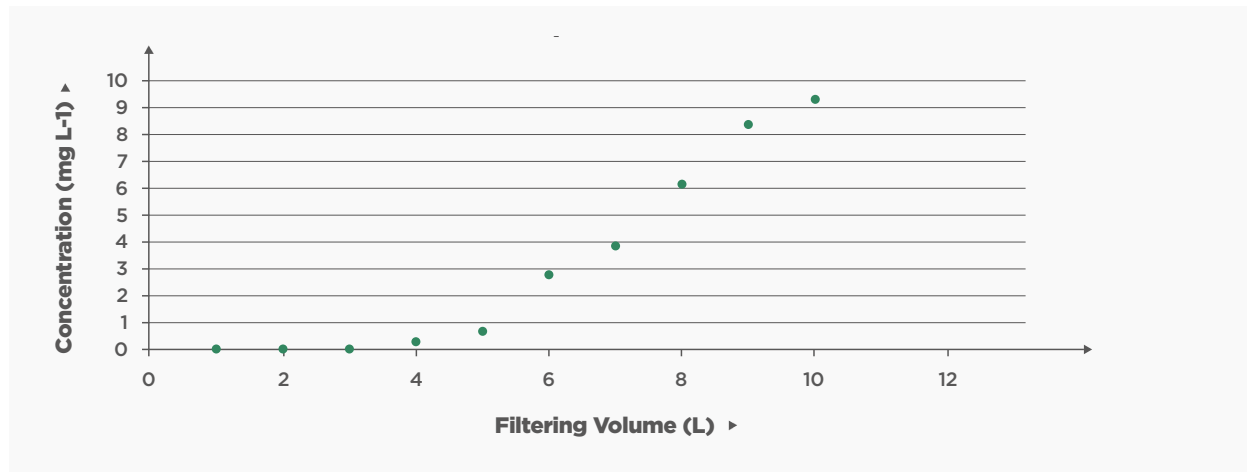
### Micro Contaminants

Various micro contaminants are now being detected in many waste water and in some potable water sources.

Although the dangers these contaminants present to humans and the environment are not well understood, reduction or removal of these compounds is a concern to many health authorities and agencies.

## Flumequine Removal

**Flumequine is a chemotherapeutic antibiotic** implicated in tendon rupture, DNA damage and anaphylactic shock. It has been taken off the market but is representative of the flumequine drug class. The data shows complete removal from 3 liters of water with a concentration of 10 mg/l. At more typical concentration in the range of 2 micrograms per liter, a square foot of Disruptor could theoretically process more than 1 million liters of water if it were free of other contaminants.



## PCB Removal

**Polychlorinated biphenyls (PCBs) are man made organic chemicals that are known for their toxic and carcinogenic effects.** Independent testing has shown Disruptor to be effective in removing PCBs from water as indicated in the above chart. **Note:** the tests shown below were done with lower grade Disruptor medias than the 5293 PAC-S used in JoJo's Filtration range, but has been included to showcase the performance capabilities of the filter media.

Congener Group	ng/L influent	5284 ng/L effluent	5283 ng/L effluent
Total monochloro biphenyls	158	2.36	0.377
Total dichloro biphenyls	629	0.85	nd
Total trichloro biphenyls	1260	nd	nd
Total tetrachloro biphenyls	4490	nd	nd
Total pentachloro biphenyls	4870	nd	nd
Total hezachloro biphenyls	4460	nd	nd
Total heptachloro biphenyls	2460	nd	nd
Total octachloro biphenyls	1810	nd	nd
Total nonachloro biphenyls	473	nd	nd
Decachloro biphenyls	187	nd	nd

### Glossary

- \* **Influent:** Water that flows in, usually the raw, untreated water.
- \* **Effluent:** Water that flows out, in this context the water once it has been filtered.