

**dip** DIP DEVICES

# EVRI™



## 510 + POD USER GUIDE

---

### CONTENTS

Introduction

Basic Usage

Power Settings

Indicator Codes

Safety

Troubleshooting

Warranty

Related User Guides



## 510 CARTRIDGE + REFILLABLE POD ATTACHMENT

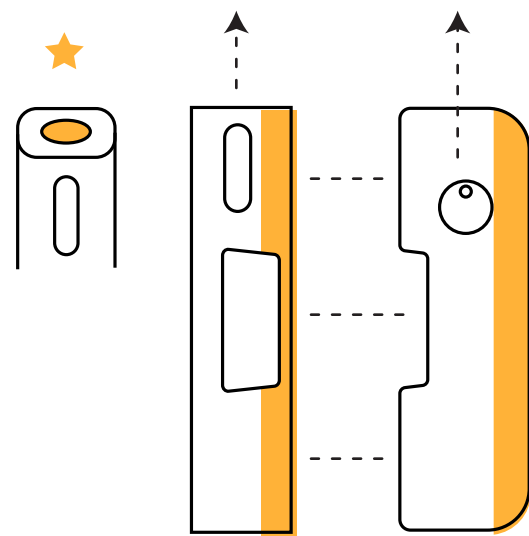
# Introduction

EVRI by Dip Devices is a multi-functional consumption solution. EVRI features a universal battery that magnetically connects to EVRI attachments. EVRI attachments will evolve as consumption does, so the battery will never be obsolete!

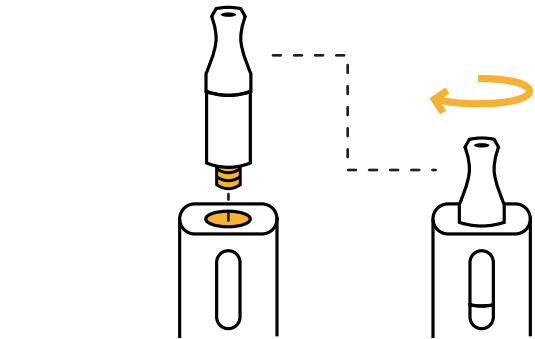
The 510 Cartridge/Refillable Pod Attachment (510/Pod) allows for 2 consumption options on one attachment! Each side of the attachment has a connection for your favorite and standard products.

# Basic Usage

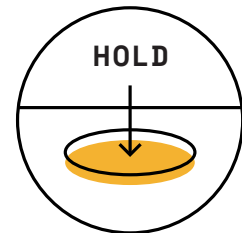
## 510 CARTRIDGE



**1** Connect 510/Pod to EVRI battery with the cylindrical opening end closest to the button.

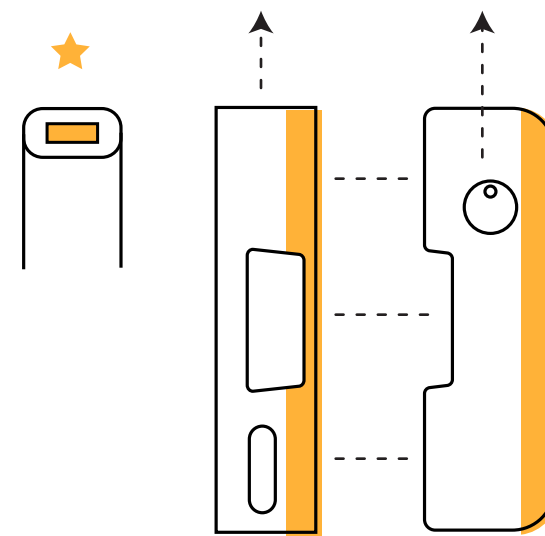


**2** Screw in your 510 cartridge

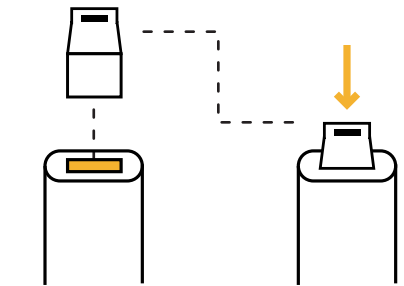


**3** Hold down the button and inhale lightly.

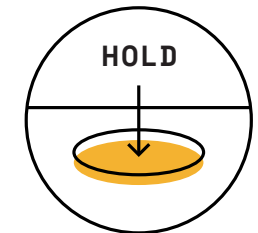
## REFILLABLE POD



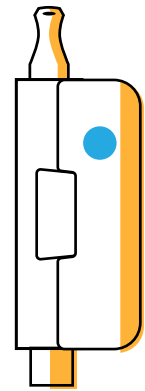
**1** Connect 510/Pod to EVRI battery with the rectangular opening end closest to the button.



**2** Insert your refillable pod.

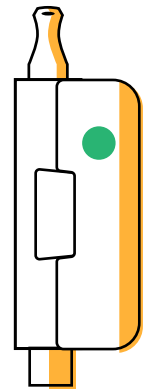


**3** Hold down the button and inhale lightly.



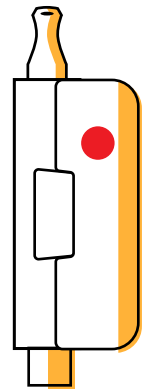
Blue

Low heat



Green

Medium heat



Red

High heat

Taste



Cloud



**Solid Color**



Current Power Setting

**Flash 3X**



Attachment connected incorrectly or not present

**Flash 3X**



Battery is completely depleted

**Flash 1X**



51-100% Battery Remaining

**Flash 1X**



21-50% Battery Remaining

**Flash 1X**



0-20% Battery Remaining

## Power Settings

1. To change the power setting on EVRI, press the button 3 times quickly, and the indicator will flash 3 times to show the new setting
2. When using a Refillable Pod the recommended setting is the BLUE power setting (2.6 V)
3. When using a 510 Cartridge the recommended setting is either the BLUE power setting (2.6 V) or the GREEN power setting (3.4 V) depending on the consistency of your product

## Indicator Codes

While in use: solid color indicating current power setting

When attachment connected incorrectly or not present: 3 white flashes

When battery is completely depleted: 3 red flashes

When attachment connected correctly:

indicator light will flash once, either:

Green - 51-100% battery remaining

Yellow - 21-50% battery remaining

Red - 0-20% battery remaining



---

## Safety

(Read the following safety recommendations before using EVRI)

1. Do not use EVRI while charging.
2. Only use this device with legal, safe, and natural products.
3. Do not expose EVRI attachment to water or other liquids.
4. Be sure to turn EVRI off (5 quick button clicks) when you are done using it.
5. Improper use, changes, or modifications to EVRI could cause damage to the device or physical harm.

---

## Troubleshooting

If you're having trouble with EVRI, go to [EVRI.dipdevices.com](https://EVRI.dipdevices.com), reach out at [support@dipdevices.com](mailto:support@dipdevices.com), or call 844-922-VAPE (8273)

---

## Warranty

Battery warranty covers manufacturing issues for 90 days.

Attachments are consumable items and will only be replaced if they are not working out of the box.

Please refer to our FAQ section for more information.

([support.dipdevices.com](https://support.dipdevices.com))

---

## Related User Guides

[EVRI Battery User Guide](#)