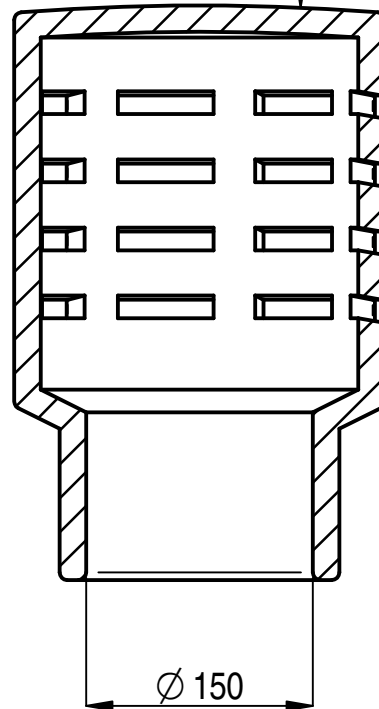


MARKINGS TO APPEAR ON THIS FACE AS FOLLOWS:

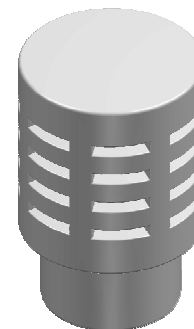
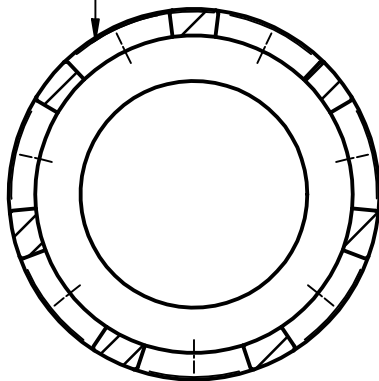
WTK EN13502 CE



MARKINGS TO APPEAR ON SPIGOT AS FOLLOWS:

185/OD  
150/ID  
380/HT  
WTK DATE (DDMMYY)

4 ROWS OF 7 - SLOTS  
EQUI-SPACED AS SHOWN



ISOMETRIC VIEW  
1:10

ALL MARKINGS TO BE IN 10 HIGH  
INDENTED CHARACTERS

GAS FLUE TERMINAL TO BS EN 13502 - TYPE 2

TO SPECIFY COLOUR, ADD SUFFIX TO CODE  
R = RED, B = BUFF, X = BLACK, G = GLAZED



THIS DRAWING IS THE PROPERTY OF WT KNOWLES & SONS LTD  
AND MUST NOT BE USED IN ANY WAY PREJUDICIAL TO THEIR INTERESTS

± 10% TOLERANCE TO BE APPLIED ON ALL DIMENSIONS

WEIGHT = 9.90 Kg

DRAWN: GB 22-09-07

SCALE

PROJECTION

DO NOT SCALE

ISSUE: 10 05-07-18

1:5



TITLE :-

GAS TERMINAL

DRAWING No. :-

KNO180

A4