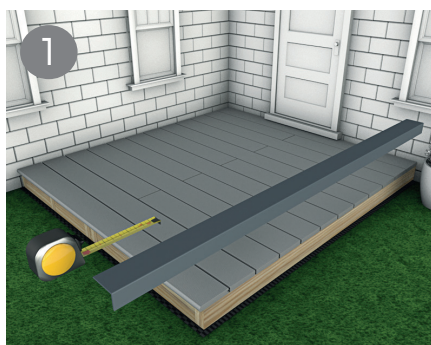
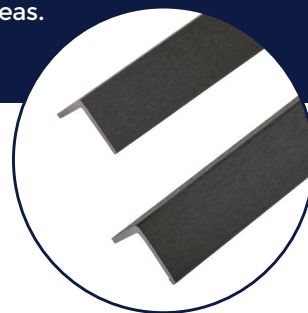


How to finish your Decking Installation guide

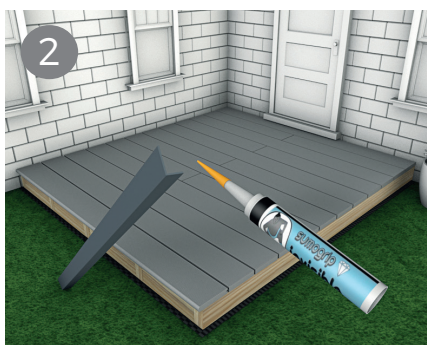
When creating your decking space there are lots of options for creating a high end finish from corner trims and bullnose boards for the edging and steps, to fascia boards for raised areas. This simple guide will show you how to install those options. We recommend you do not fully close your deck to allow for the free circulation of air and drainage.

CORNER TRIMS

Corner trims are an L shape angle piece which can be used on the edges of your composite decking area. You can use a matching colour to compliment the rest of your project or even if you wanted a contrasting look, with each composite corner trim available in all 8 colours as the decking.



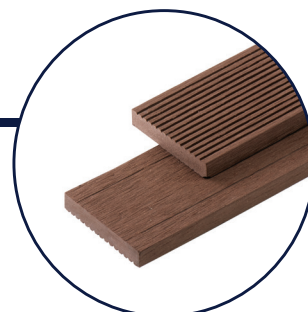
1 Take the corner trim and measure the length of the area its going to be fitted on to. Corner trims can be cut and worked just like timber so can be cut to desired size. If placing two trims side by side, simply butt up together.



2 Once the corner trim is cut to size, you can use sumogrip adhesive along one or both sides of the corner trim and attach to the edge of the decking. To allow for expansion you may wish to only glue the top edge to allow for some movement.

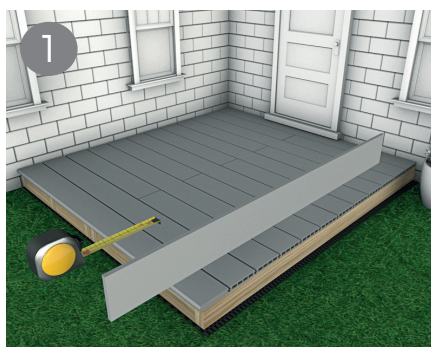


3 Once installed, you can then cut and place the second piece of trim along the edge until you have the desired finished look.

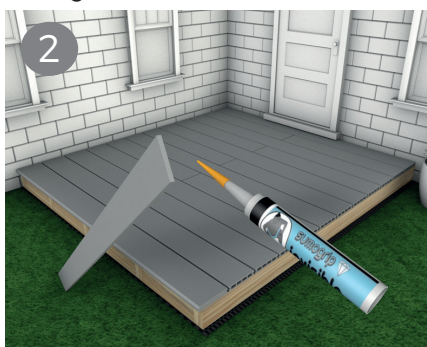


SKIRTING TRIM

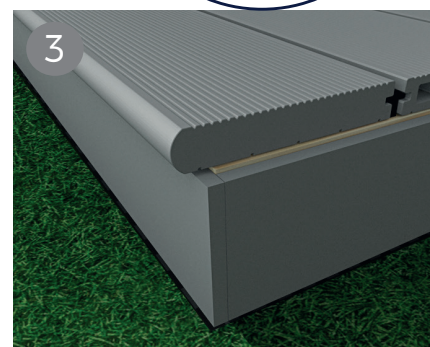
Each skirting trim, just like our composite decking and cladding boards, can be cut to size and sanded to fit. Skirting trim can be used as a fascia to your decking project depending on the depth required. Skirting trim is available in 8 colours to match the decking.



1 Measure the edge of the decking area to obtain the length required, skirting trim can be cut to size as needed. If you need a longer length than 2.2m simply butt the two skirting edges up together.



2 To fit the skirting trim you can either glue this using sumo grip adhesive or the trims can be screwed into the joists (Please note this method may cause the natural fibres to split) We advise the sumo grip adhesive option.



3 Once installed, you can then cut and place the second piece of trim along the edge until you have the desired finished look. A **gap of at least 8mm** should be maintained between skirting trims and the ends and sides of boards.



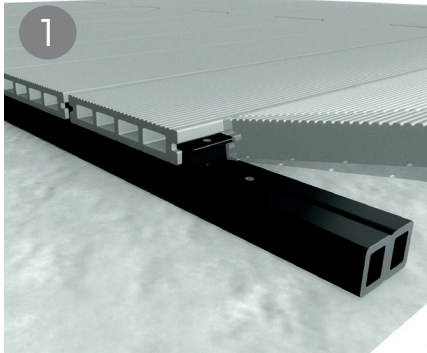
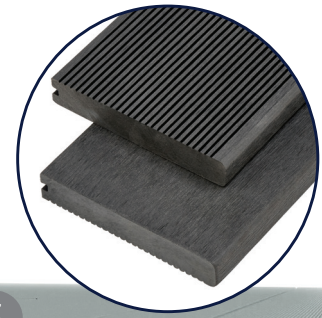
Order online at www.cladcodecking.co.uk
Call us on 01837 659901

Please always consult a professional before installing Cladco Products

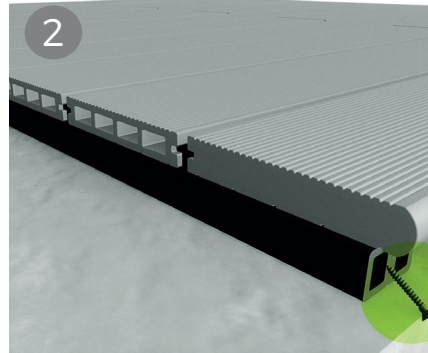
CLADCO
DECKING

BULLNOSE BOARDS

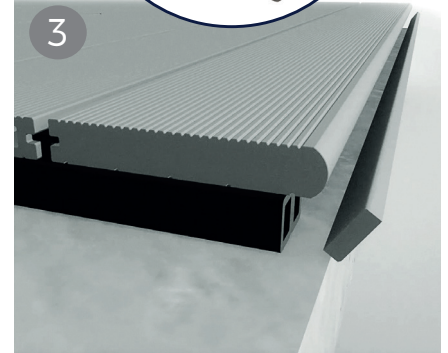
These decking boards are designed to give your decking project a professional finish to its borders. The rounded bullnose design creates a neat edge that can be used with all our composite decking profiles. Bullnose boards can be used into a picture frame effect as a different colour to the main deck, or in a complementary shade to blend in. They are also particularly good for steps.



After the last board of the main project has been laid, screw in a T clip along the edge of the final board. The bullnose board can then be inserted next to it.



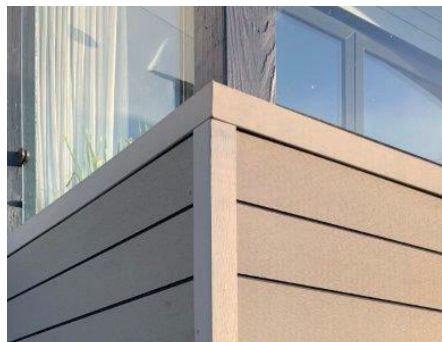
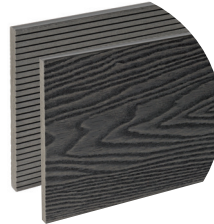
Once the bullnose board is placed you will need to insert a screw at an angle through the supporting joist underneath the board. Ensure the bullnose board is supported along the length with joists and a screw is inserted into each one.



Once the bullnose board has been secured into place you can use a skirting board to neaten the edge. For higher areas you may wish to use a decking board as an edge. Secure the skirting edge with either a screw into each joist or using sumo grip adhesive.

FASCIA BOARDS

If creating a raised decking area you may wish to use a fascia board along the front edge, this can cover the support system used underneath the decking area. Depending on the height of your decking fascia boards can be used as a single board or installed on top of one another to create a solid side of fascia. Fascia Boards can be used with the woodgrain effect or narrow groove side pattern depending on your preference.

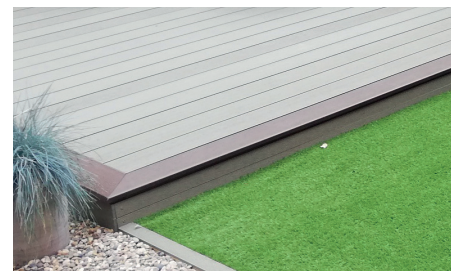


Cladco Composite Fascia Boards can be installed using both Sumo Grip Adhesive and 50mm Speeddekz Screws. When installing alternate between Sumo Grip and Screws every 150mm until the Board is firmly in place. The supporting structure underneath the decking must have adequate supports for the fascia board to be secured into. Sumogrip alone will not support the weight of the board and must be used in conjunction with screws.

Fascia Boards can be installed multiple boards high providing they are supported behind with a joist. Fascia boards can be secured into timber or composite supporting frames.

END CAPS

Can be a tight fit, due to the natural fibres you may need to slightly sand them before placing on the ends of the boards. Ensure the end caps are not forced into place as this may cause them to snap.



SKIRTING TRIM

Skirting Trims can be used in areas where the front fascia is much smaller, as the skirting boards are much thinner. Sumogrip adhesive can be used to secure Skirting Trims to joists.



Order online at www.cladcodecking.co.uk
Call us on 01837 659901

Please always consult a professional before installing Cladco Products

CLADCO
DECKING