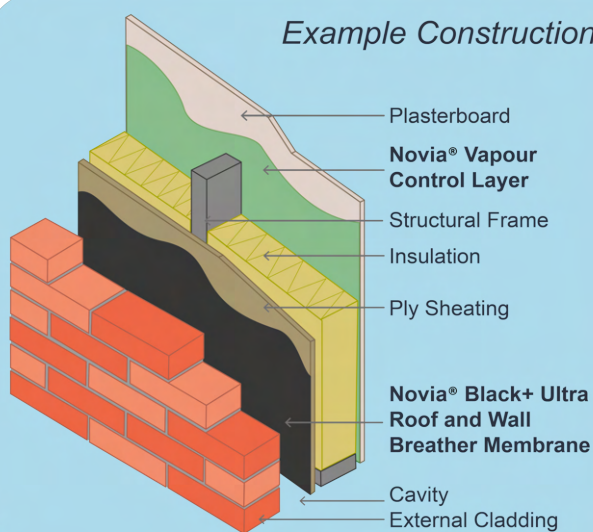


Novia® Black+ Ultra is an entry grade, dual approved low cost breather membrane. The membrane is designed for use in pitched cold and warm roofs and insulated wall applications, so meets requirements for EN 13859-1 for pitched roofing and EN 13859-2 for walls. It has good water resistance, high breathability, and is lightweight, easy to handle and meets Class E to EN 13501-1 fire classification.

Novia® Black+ Ultra is coloured black on one side and grey on the other, but no text or images on either side, except 150mm overlap guidelines.



Example Construction



- Good tensile and nail tear strength
- Install as per BS 5534 UV Guidance
- Install with Novia® speciality tapes
- Highly waterproof and vapour permeable
- Grade E Fire Rated
- UKCA / CE compliant to EN 13859-1 (roofs) and EN 13859-2 (walls)
- Tested for BS 5534 wind uplift requirements
- 3-layer laminate with microporous core

	Value	Units	Test Method
Standard width	1.5	m	
Roll length	50	m	
Roll weight	8	kg	EN 1849-2
Nominal weight	102	g/m ²	EN 1849-2
Tensile strength MD / CD	250 / 140	N/50mm	EN 12311-1
Elongation MD / CD	60 / 70	%	EN 12311-1
Resistance to tearing MD / CD	100 / 95	N	EN 12310-1
Sd value	0.029	m	EN ISO 12572
Resistance to water penetration	W1	Class	EN 1928
Resistance to water penetration (after ageing)	W1	Class	EN 1928
Low temperature stability (no cracking at)	- 60	°C	EN 1109
Reaction to fire	E	Class	EN 11925-2
UV resistance	Install as per BS 5534 UV Guidance		



DS0723BLK+ULTB

Installation guidance for walls :

Fix the Novia® Black+ Ultra Breather Membrane to the wall structure; ensure upper layers overlap lower layers. Work from the bottom moving upwards and ensuring there are minimum overlaps of 100 mm on the horizontal joints. Do not begin a vertical lap joint within 300 mm of a corner, and vertical laps should be at least 150 mm. Ensure the bottom timber is also protected by an overlap. Fix at suitable intervals with galvanised nails, stainless staples or similar fixings that will be permanent.

Do not leave the membrane unnecessarily exposed to weathering, high winds, excessive UV etc. as this may cause damage over time. If you must leave the membrane exposed for extended periods of time, consider the use of suitable temporary protection materials.

Installation guidance for roofs :

Novia® Black+ Ultra can be installed within standard warm roof applications. Novia® Black+ Ultra can also be used in conventional cold roof applications. Fix the membrane to the roof structure and ensure upper layers overlap lower layers. Work from the bottom moving upwards and ensure there are minimum overlaps used as shown within BS 5534. The membrane should be overlapped 200 mm on each side of the ridge. All vertical overlaps must be situated on a rafter and must be sealed. Fix at suitable intervals with galvanised nails, stainless staples or similar approved fixings that will be permanent. At any entry points for services (soil pipes, vents etc.), ensure that Novia® Black+ Ultra is properly sealed. Where pipes etc. penetrate the underlay, cut neatly and accurately and turn edges up to give a tight water-resistant fit, and seal with Novia® tapes. In order to comply with some BS 5534 wind uplift zone requirements you must use our single-sided Novia® Breather Membrane Lap Tape. See wind uplift tables for full details.

Wind uplift :

	≤ 345mm batten gauge with batted laps	≤ 250mm batten gauge with batted laps	≤ 345mm batten gauge with taped laps	≤ 345mm batten gauge with minimum 11mm counterbatten
Novia® Black+ Ultra Zone Suitability	Zone 1	Zone 1 to 5	Zone 1 to 5	Zone 1 to 4
Novia® Black+ Ultra Wind Uplift Resistance	826 Pa	1715 Pa	1830 Pa	1531 Pa

Tapes :

We advise the use of Novia® installation tapes, which will greatly improve the performance and overall airtightness of the installation. We offer a single-sided Novia® Breather Membrane Lap Tape for standard installations, but for high specification work where there is even greater emphasis on air-tightness, we also offer the optional Novia® Double-Sided Adhesive Tape to provide a high performance dual tape seal.

Other notes :

- Ensure that for all wall or warm roof applications, a Novia® Air and Vapour Control Layer such as Novia® VC2 or VC200 Reflective is installed on the warm side of the insulation to limit unwanted interstitial condensation. As little as 1 - 3% moisture contamination within the insulation can adversely affect the achieved thermal performance by more than 30%.
- Novia® Black+ Ultra Breather will reduce the risk of condensation within the roof space but in certain atmospheric conditions it can never be totally eliminated.
- Always handle material carefully to prevent tears and punctures and repair all damage.
- Ensure that sufficient ventilation is incorporated to comply with all relevant building regulations and technical standards, such as BS 5250.
- Store product in suitable conditions.

This datasheet represents the latest understanding of the subject. However, it is for the ultimate user to determine suitability of our products within specific applications. The advice and information we have provided is general in nature, and is subject to future revision.

DS0723BLK+ULTB