



BLUE SKY

OUTDOOR LIVING

OWNER'S MANUAL
**STAINLESS STEEL
BURN BARREL**

SSBB-3222

Blue Sky can provide elevated ambience, quality and safety to your outdoor living space. Our products are designed to create a practical space to bring people together. Whether you're using Blue Sky products to roast s'mores in your backyard, enjoy a beach bonfire, assist at your tailgate or accompany you on a camping trip, you can rely on their durability and performance. Thank you for your purchase of this Blue Sky stainless steel burn barrel.

CONNECT WITH US

www.blueskyoutdoorliving.com



@blueskyoutdoorliving

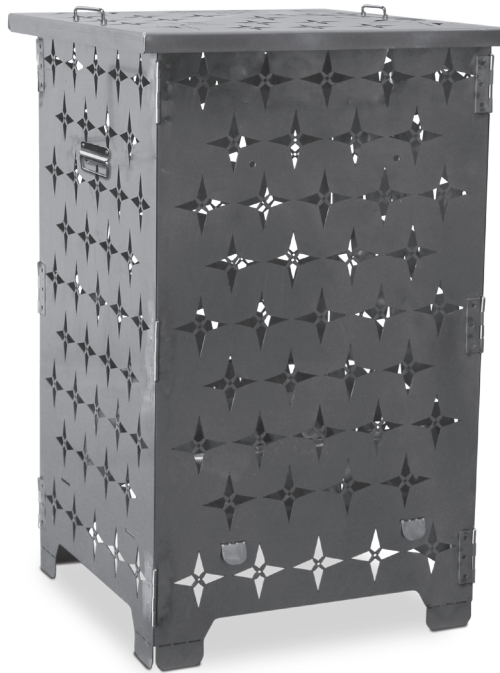
Fill in the following information and retain this manual for future reference:

MODEL(S):

DATE OF PURCHASE:

PLACE OF PURCHASE:

RECEIPT NO:



SSBB-3222

SSBB-3222

Stainless Steel Burn Barrel

22" Sq x 32" H

55.9 cm Sq x 81.3 cm H

FOR YOUR SAFETY

PLEASE READ AND UNDERSTAND ALL SAFETY RULES BEFORE ASSEMBLING AND USING THIS BURN BARREL. FAILURE TO FOLLOW THESE INSTRUCTIONS COULD RESULT IN A HAZARDOUS FIRE, CAUSING PROPERTY DAMAGE OR PHYSICAL INJURY.

RULES FOR SAFE OPERATION

CAUTION: FOR OUTDOOR USE ONLY. DO NOT USE INDOORS.

- The parts of this product can have sharp edges and can cause cuts if not handled properly. Wear gloves when handling during assembly and use.
- For adult use only – do not allow children to use the burn barrel. Keep children and pets away from the burn barrel while it is in use.
- Use the burn barrel on stone, dirt or sand only.
- Do not use on lawns, wooden decks, concrete or asphalt.
- Do not use under a patio roof, low hanging branches, trellis, or overhangs of any kind including covered porches.
- Do not use in windy conditions.
- Do not leave burn barrel unattended when it is in use.
- Care should be taken to make sure all combustible material is far enough away from the burn barrel to not ignite. We recommend keeping this product at least 15 ft (4.5 m) from combustible materials.
- Always use in accordance with all applicable local and state fire codes.
- Exercise the same precautions you would with any open fire.
- Do not wear flammable or loose clothing when tending an open fire.
- Never touch this product when in use, as the surfaces will be extremely hot.

- Assure fire is completely extinguished before leaving the burn barrel.
- Store burn barrel safely out of reach of children when not in use.
- Any modifications to this appliance may be dangerous and are not permitted.

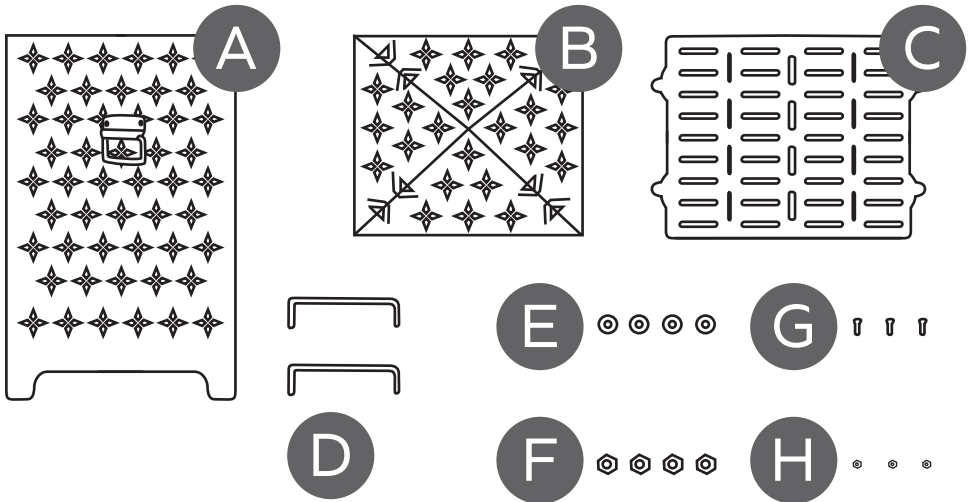
HELPFUL HINTS

- Do not attempt to move the burn barrel once the fire is started.
- Do not place the burn barrel in an area where it could be easily tripped over.

PARTS LIST

UNPACK PARTS, MAKING SURE ALL PIECES ARE PRESENT BEFORE ATTEMPTING TO ASSEMBLE.

REF	QTY	DESCRIPTION
A	4	Walls (Four pieces come hinged together)
B	1	Lid
C	1	Grill
D	2	Lid Handles
E	4	Washers
F	4	Large Nuts
G	3	Bolts
H	3	Small Nuts



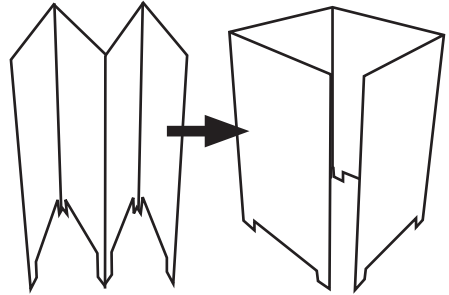
ASSEMBLY

TOOLS REQUIRED

Socket or wrench for tightening nuts

STEP 1

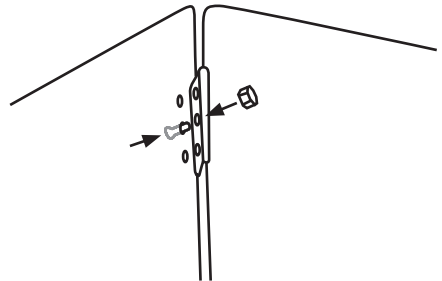
Unfold the hinged walls so that they make a square.



STEP 2

Align the holes in each of the three hinges with the holes in the opposite wall.

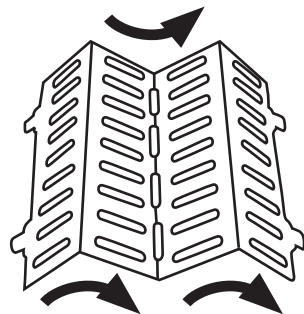
For each hinge, insert one bolt through the center holes from the exterior. Tighten each with a small nut.



STEP 3

WARNING: Sharp edges! Use safety gloves when bending the grill.

Using a flat surface with an edge, forcefully bend the center of the grill to a 90° angle. Then bend the two ends to a 90° angle in the opposite direction.

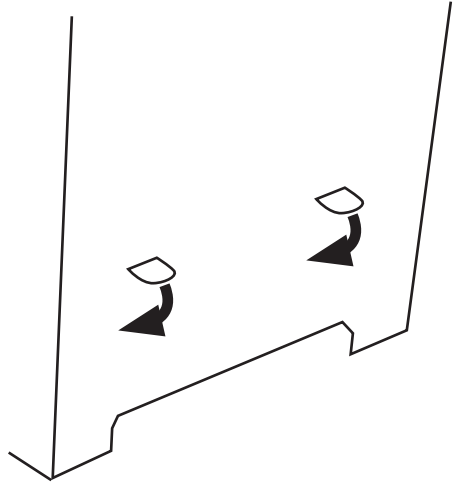


STEP 4

Place the grill inside the burn barrel.

Insert the tabs in the grill through the slots in the walls. The slots are located near the bottom of the burn barrel. Once inserted, bend the tabs down to hold the grill in place.

NOTE: If the grill does not fit inside the burn barrel or the tabs do not reach the slots, adjust the angles of the bends in the grill.

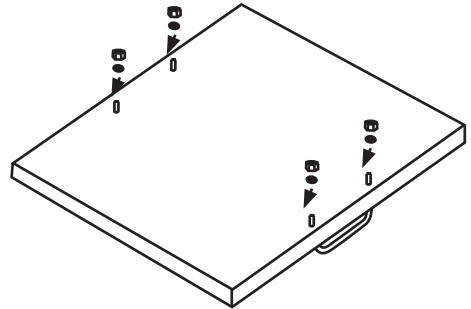


STEP 5

Turn the lid upside down. Insert the threaded end of each handle through the holes in the lid.

Insert a washer and large nut on each end of the handles.

Place the lid on top of the burn barrel.





BLUE SKY

OUTDOOR LIVING

Manufactured by:

Quality Craft

Surrey, BC, Canada V3S 5N4

service@blueskyoutdoorliving.com

1-800-459-4409

(Monday to Friday, 8:00 am–4:30 pm, CST)

Made in China

BKOLSSBB-02/19