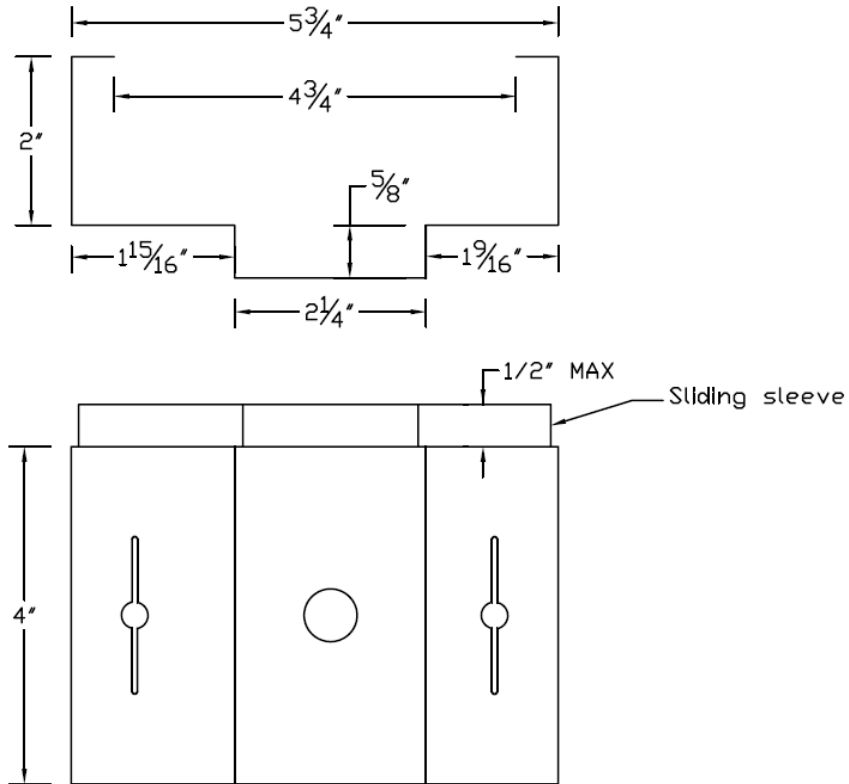


JAMB PATCH KIT

PRODUCT SPECIFICATION

DIMENSIONS:



SLEEVE TRAVEL: 1/2" MAX

MATERIALS: GALVANEAELED STEEL

THICKNESS: 16GA, 0.056" NOMINAL

THE JAMB PATCH IS DESIGNED TO REPAIR THE LOWER PORTION OF A STEEL FRAME USED IN A MASONRY OPENING. THE DIMENSIONS OF THE JAMB PATCH COINCIDE WITH THE MOST COMMON MASONRY FRAME USED IN THE UNITED STATES, I.E. A 5-3/4" MASONRY FRAME.

NOTE: THE EXISTING JAMB DIMENSION SHOULD BE CHECKED AGAINST THIS SPECIFICATION PRIOR TO USING THE JAMB PATCH PRODUCT.



Door Innovation, 10503 Citation Dr, Brighton, MI 48116
810-227-7111
www.doorinnovation.com