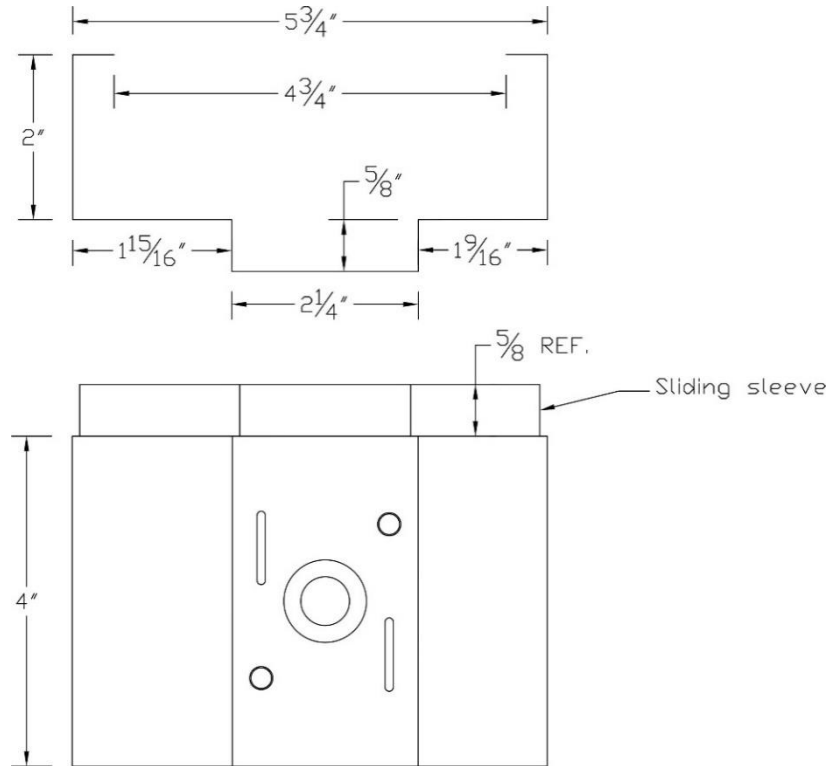


JAMB PATCH KIT PRODUCT SPECIFICATION

Dimensions



Sleeve Travel:	$5/8$ " Max
Materials:	Galvanealed Steel
Thickness:	16GA, 0.060" Nominal

The Jamb Patch is designed to repair the lower portion of a steel frame used in a masonry opening. The dimensions of the jamb patch coincide with the most common masonry frame used in the United States, i.e. a $5\text{-}3/4$ " masonry frame.

NOTE: THE EXISTING JAMB DIMENSION SHOULD BE CHECKED AGAINST THIS SPECIFICATION PRIOR TO USING THE JAMB PATCH PRODUCT.

Door Innovation, 10503 Citation Dr, Brighton, MI 48116
517-275-6277
www.jambpatch.com
www.doorinnovation.com