



AUDIO  
JBuddies Studio 2  
WIRELESS HEADPHONES

We love that you are rocking JLab!  
We take pride in our products and fully stand behind them.



**YOUR WARRANTY**

All warranty claims are subject to JLab authorization and at our sole discretion. Retain your proof of purchase to ensure warranty coverage.



**CONTACT US**

Reach out to us at [support@jlab.com](mailto:support@jlab.com) or visit [jlab.com/contact](http://jlab.com/contact)

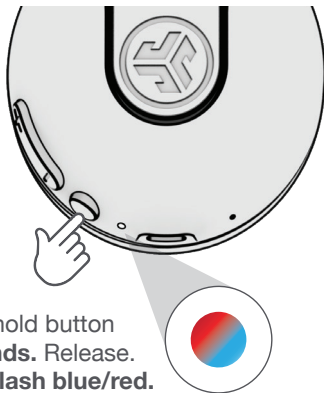
**REGISTER TODAY**

[jlab.com/register](http://jlab.com/register)

Product updates | How-to tips  
FAQs & more

**BLUETOOTH**

1



Press and hold button for **8 seconds**. Release. Lights will **flash blue/red**.

2

Enter your Bluetooth device settings and select JLab JBuddies Studio 2.

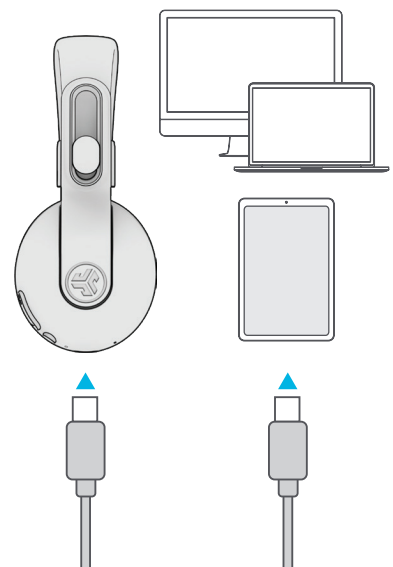


**CONTROLS** 1x Press ● 2x Press ●● Press Hold ■■

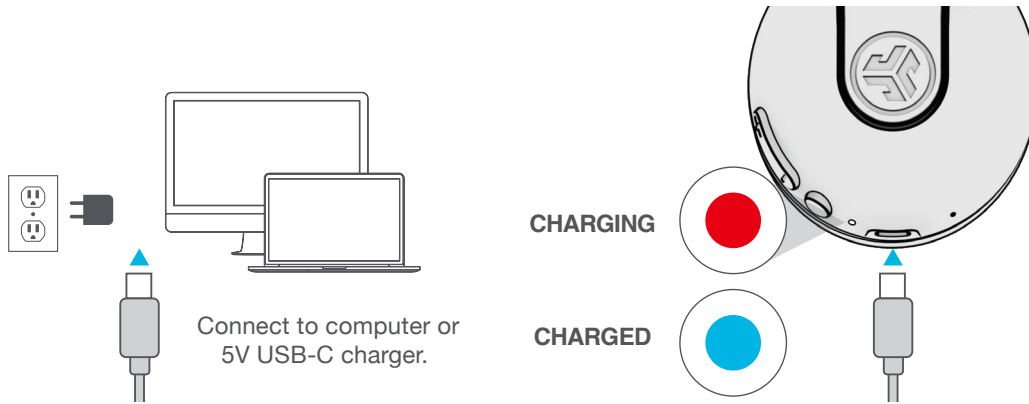
VOLUME	+	●	+ SWITCH 85dB/95dB
TRACK	■	■	
VOLUME	-	●	- 5 sec both buttons
TRACK	■	■	
PLAY/PAUSE	●	●	
ANSWER/HANG UP	●	●	
REJECT	■	■	1 sec
POWER	■	■	3 sec
BLUETOOTH PAIRING	■	■	8 sec
SIRI/OK GOOGLE	●●	●●	

**GO WIRED**

Connect USB-C cable to computer/tablet/phone for wired mode.

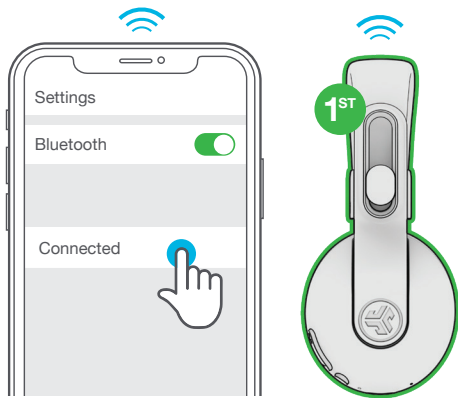


## CHARGING

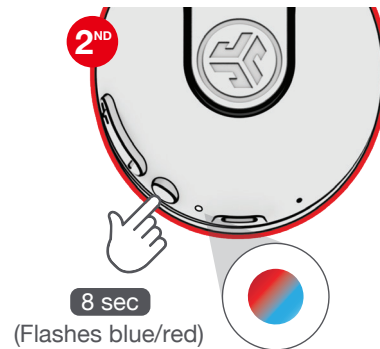


## SHARE MODE (SHARE BETWEEN TWO JBuddies Studio 2 Wireless Headphones)

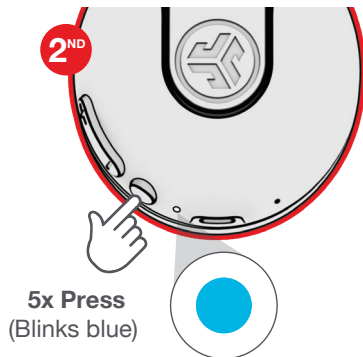
- 1 Connect **FIRST** headphone to device.



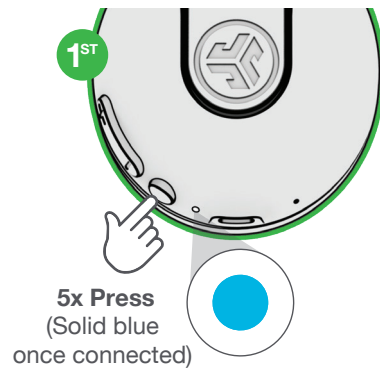
- 2 **SECOND** headphone should be power off.  
Press hold until flashing blue/red.



- 3 **SECOND** headphone 5x Press and blinks blue.



- 4 **FIRST** headphone 5x Press to share.



[Shop products](#) | [Product alerts](#) | [Burn-in your headphones](#)

JLab Audio + Burn-in Tool

