



JLAB AUDIO  
JBUDS BAND  
NECKBAND HEADSET

We love that you are rocking JLab Audio!  
We take pride in our products and fully stand behind them.



**YOUR SATISFACTION IS GUARANTEED**

You may exchange or return merchandise within 30 days of the purchase date.  
Learn more at [jlabaudio.com/guarantee](http://jlabaudio.com/guarantee)



**YOUR WARRANTY**

You may register your product at [jlabaudio.com/register](http://jlabaudio.com/register). All warranty claims are subject to JLab Audio authorization and at our sole discretion. Retain your proof of purchase to ensure warranty coverage.

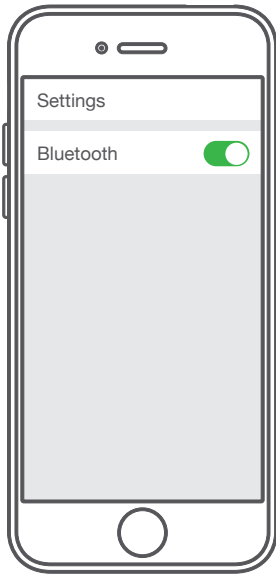


**CONTACT US**

Reach out to us at [support@jlabaudio.com](mailto:support@jlabaudio.com) or visit [jlabaudio.com/contact](http://jlabaudio.com/contact)

**FIRST TIME SETUP: BLUETOOTH PAIRING**

- 1 Turn on the Bluetooth in your device settings.



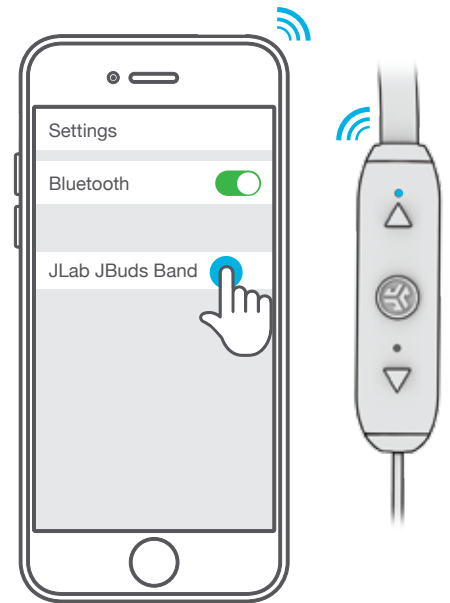
- 2



Press and hold button for **10 seconds**.  
Release.  
Light will **blink red and blue** to indicate pairing mode.

- 3

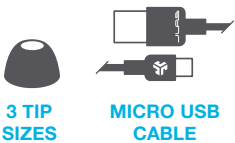
- Select "JLab JBuds Band" in your device's Bluetooth settings to connect.  
Light will **slow blink blue** when Bluetooth is paired.



**RECURRING USE**

Once JLab JBuds Band has initially paired to your device, the earbuds will auto-connect to your Bluetooth device when powered back ON. (Follow **BUTTON FUNCTIONS** instructions)

**ACCESSORIES**



3 TIP SIZES

MICRO USB CABLE

## BUTTON FUNCTIONS

**VOLUME UP:** Click once.

**TRACK FORWARD:**  
Click & hold 2+ seconds.

**POWER ON / OFF:**  
Click & hold 2 seconds.

**PLAY / PAUSE:**

**ANSWER / HANG UP CALLS:**  
Click once.

**REJECT INCOMING CALLS:**  
Click & hold 1 second.

**ACTIVATE SIRI (iOS) OR  
"OK GOOGLE" (ANDROID):**  
Click twice.

**BLUETOOTH PAIRING:**  
(Follow First Time Setup:  
Bluetooth Pairing)

**VOLUME DOWN:** Click once.

**TRACK BACKWARD:**  
Click & hold 2+ seconds.



## EQUALIZER MODES

**Quick press both buttons  
for different EQ settings**  
(JBuds Band will cycle 3 EQ settings)

**JLab SIGNATURE  
(One Beep)**

JLab C3™ signature sound  
with amplified vocals and bass

**BALANCED  
(Two Beeps)**

Even sound with no additional  
sound enhancements

**BASS BOOST  
(Three Beeps)**

Amplified bass and sub-bass

## VOICE PROMPTS

**"HELLO"**  
Power is ON.

**"BATTERY FULL"** = 100-75%  
**"BATTERY MEDIUM"** = 75-25%  
**"LOW BATTERY"** = Less than 25%

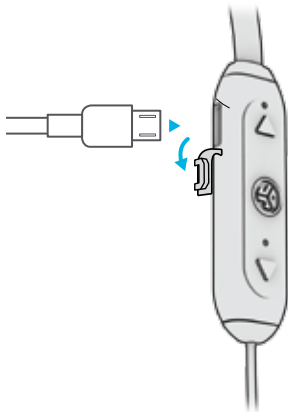
**"READY TO PAIR"**  
JLab JBuds Band headset is ready  
to connect to your Bluetooth device.

**"YOU'RE CONNECTED"**  
JLab JBuds Band headset is  
connected to your Bluetooth  
device and ready for use.

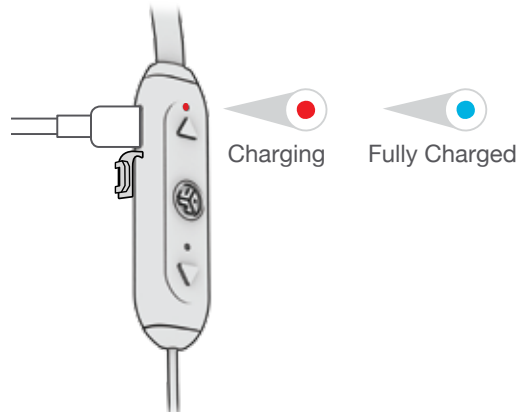
**"GOODBYE"**  
Power turning OFF.

## CHARGING

**1** Open USB door and connect  
the cable to a computer or  
USB power source to charge.

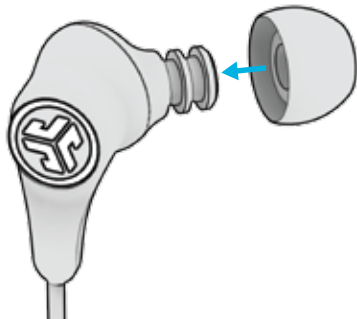


**2** Light will **turn solid red** when  
charging and **turn blue** when  
fully charged.

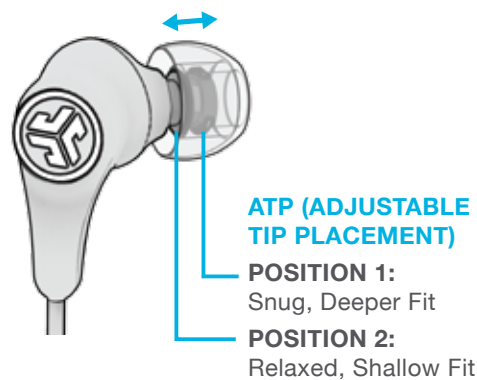


## FITTING

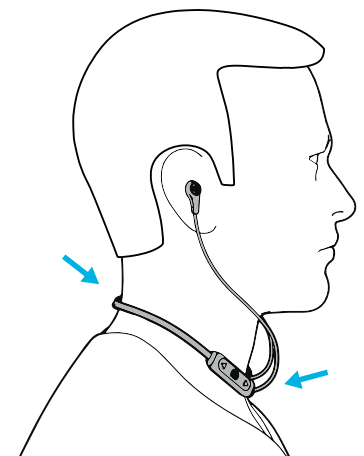
**1** Choose ear tip size.



**2** Move the earbud to desired location  
from the Adjustable Tip Placement.



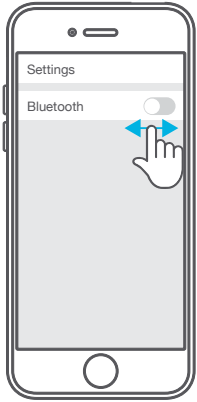
**3** Rest the band around the neck with  
the controls facing the right hand side.



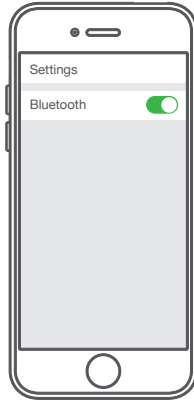
## CONNECTION TROUBLESHOOTING

### I DO NOT SEE JLAB JBUDS BAND IN MY DEVICE

- 1 Turn Bluetooth off and then back on in device settings.

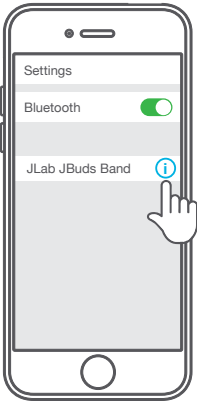


- 2 If you still do not see JLab JBuds Band, repeat **FIRST TIME SETUP: BLUETOOTH PAIRING** directions.

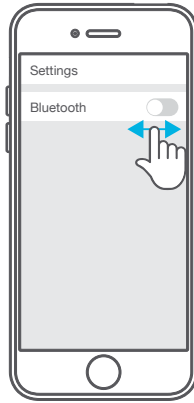


### JLAB JBUDS BAND DOES NOT RECONNECT TO MY DEVICE AFTER POWERING ON

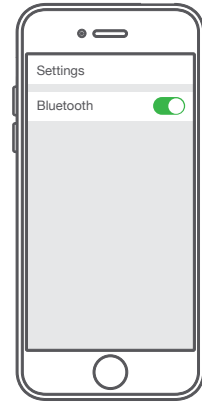
- 1 In device settings, forget JLab JBuds Band.



- 2 Turn Bluetooth off then back on in device settings.



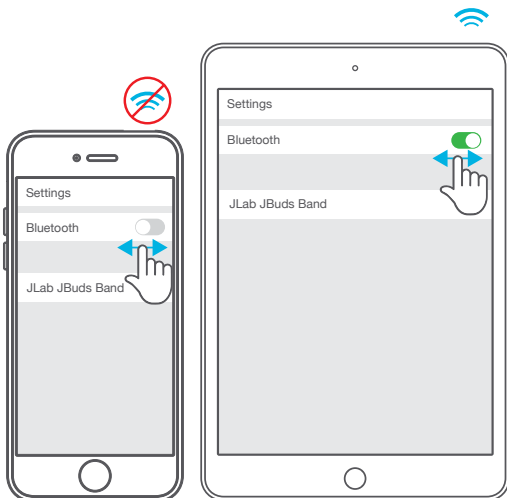
- 3 Repeat **FIRST TIME SETUP: BLUETOOTH PAIRING** directions.



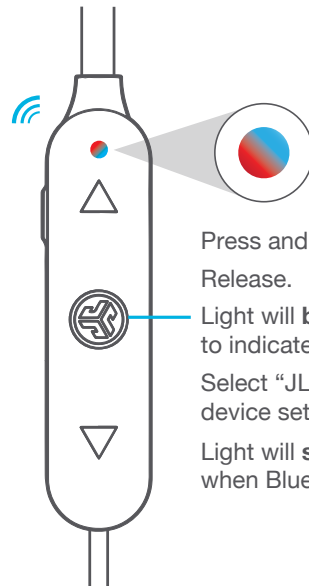
### BLUETOOTH IS CONNECTING TO AN UNWANTED DEVICE

**Note:** The JLab JBuds Band can remember up to 8 devices. It will try to auto-connect to last device used.

- 1 If you have more than one device that was connected to JLab JBuds Band, turn OFF Bluetooth on unwanted devices and turn ON Bluetooth on chosen device.



- 2



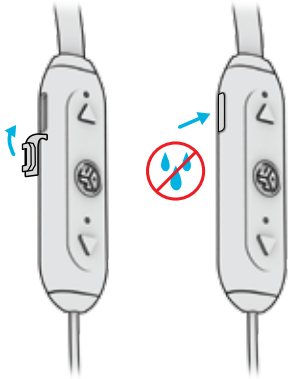
Press and hold button for **10 seconds**.  
Release.

Light will **blink red and blue** to indicate pairing mode.

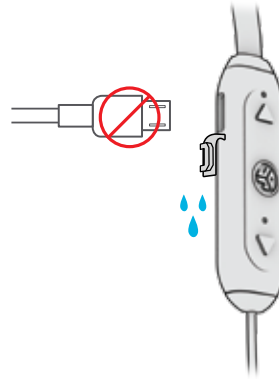
Select "JLab JBuds Band" in your device settings to connect.

Light will **slow blink blue** when Bluetooth is paired.

## WARNING



Make sure USB door is closed and fastened. This will protect against sweat and water damage.



Before charging, JLab JBuds Band headset needs to be fully dry. If there is any exposure to moisture, the internal components may become damaged. It is best practice to air dry before charging.

## WARM-UP YOUR HEADPHONES

Optional: Burn-in is the process for exercising new audio equipment. We recommend 40 hours of burn-in time for most headphones to reach optimal performance. The main purpose of the process is to loosen the diaphragm of a newly crafted headphone and to stress the headphone driver. Normal, everyday use can also burn-in the headphones though JLab's proprietary burn-in provides an ideal mix of sounds and frequency sweeps to achieve this.

 Burn-in your audio equipment with the JLab Audio app available on the App Store and Google Play. Or access the burn-in method at: [jlabaudio.com/burnin](http://jlabaudio.com/burnin)

## CAUTIONS

- Avoid getting moisture or liquids into the tip of the earbuds or charging port.
- Avoid extreme heat, cold, and humidity.
- Avoid dropping or crushing the earbuds, stressing the cable by rapid pulling or extreme force, or bending the cable at a sharp angle.
- Wax may build up in the earbud tips, lowering the sound quality. Carefully remove the wax with a cotton swab or other small tool to improve the sound quality.
- If you experience discomfort or pain, try lowering the volume or discontinuing use temporarily.
- If you experience regular discomfort while using this product, discontinue use and consult your physician.
- We recommend you treat your earbuds as you would a nice pair of sunglasses and keep them in safe location when not in use.