



JLAB AUDIO
JBUDS AIR
|
EARBUDS

We love that you are rocking JLab Audio!
We take pride in our products and fully stand behind them.



YOUR WARRANTY

All warranty claims are subject to JLab Audio authorization and at our sole discretion. Retain your proof of purchase to ensure warranty coverage.



CONTACT US

Reach out to us at support@jlabaudio.com or visit jlabaudio.com/contact

REGISTER TODAY

jlabaudio.com/register

Product updates | How-to tips
FAQs & more

FIRST TIME SETUP: BLUETOOTH PAIRING

- 1 AUTO-CONNECTING EARBUDS**
Press and hold 3+ seconds on both buttons. **White lights will flash** to indicate earbuds are automatically pairing to each other.



- 2 CONNECTING TO BLUETOOTH**
Once earbuds pair, the **right earbud will flash blue and white** indicating the earbuds are ready to pair to your Bluetooth device. **Left earbud will be solid white.**



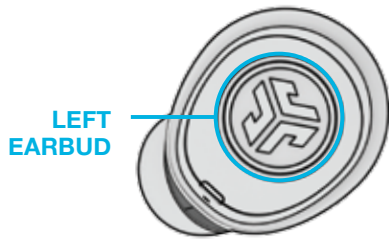
- 3 CONNECTING TO BLUETOOTH**
Select "JLab JBuds Air" in your device settings. Voice prompt "Bluetooth connected" followed by **solid white lights** will indicate you are connected. You will now be ready to use your JBuds Air.



PAIRING NEW / ADDITIONAL BLUETOOTH DEVICES:

When earbuds are powered off, press and hold Right Earbud button 10+ seconds. The earbud will **flash blue and white** indicating it is ready to pair to your Bluetooth device. Once connected, turn on Left Earbud to auto connect both earbuds.

BUTTON FUNCTIONS



TURN ON / OFF:

Press & hold 5+ seconds

VOLUME DOWN: 1 click

PLAY / PAUSE: 2 clicks

TRACK BACK:

Press & hold 1+ second

TURN ON / OFF:

Press & hold 5+ seconds

VOLUME UP: 1 click

ANSWER: 1 click. **HANGUP:** 2 clicks

REJECT INCOMING CALLS:

Press & hold 1+ second

SIRI (iOS) or "OK GOOGLE" (ANDROID):

2 clicks

TRACK FORWARD:

Press & hold 1+ seconds

VOICE PROMPTS

"Hello": Power ON

"Earbuds joined":

Earbuds paired to each other

"Ready to Pair": JBuds Air are ready to pair to Bluetooth device

"Bluetooth Connected":

Earbud is connected to device

"Battery Full": 100-75%

"Battery Medium": 75-25%

"Low Battery": Less than 25%

When power decreases to 10%, "Low Battery" will play

"Goodbye": Power OFF

EQUALIZER MODES

Click either the right or left earbud 3 times for different EQ settings (JBuds Air will cycle 3 EQ settings).



JLab SIGNATURE

JLab C3™ signature sound with amplified bass and vocals



BALANCED

Even sound with no additional enhancements



BASS BOOST

Amplified bass and sub-bass

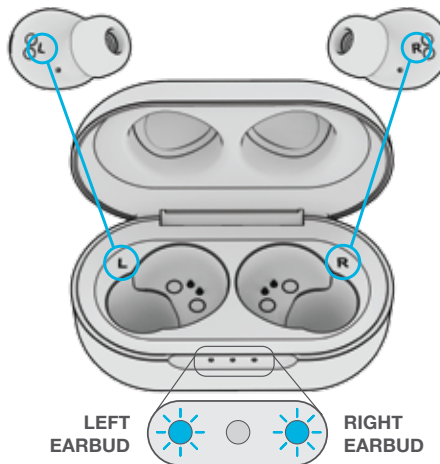
CHARGING EARBUDS

The left and right earbud need to match the corresponding L and R letters on the charging case for proper charging and connection.

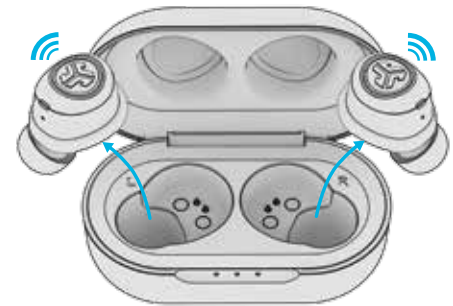
Placing the earbuds in the case will auto power off the earbuds and start charging.

Solid blue lights on the earbuds will indicate charging and will **turn off** after earbuds are fully charged.

Case will show **blinking blue lights** while charging.



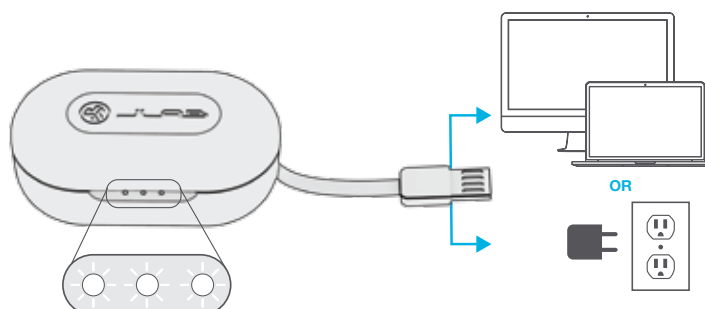
Removing the earbuds from the case will turn on and auto connect to your device for next use.



CHARGING CASE

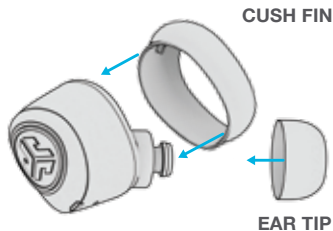
Connect the JBuds Air to computer or USB 5V output device.

LEDs pulse white when charging and **turn solid white** when fully charged.



FITTING

Try the optional Cush Fins and all ear tips for best fit and proper seal.



1 Hold the earbud vertical to the ear.



2 Twist in the ear canal to lock in.



TROUBLESHOOTING

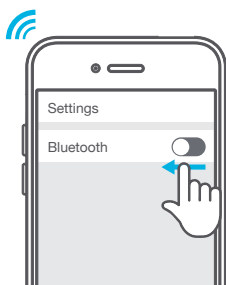
CAN YOU HEAR MUSIC FROM THE RIGHT EARBUD BUT NOT THE LEFT?

CONNECT/RECONNECT THE LEFT AND RIGHT EARBUDS

If the right earbud is working but no sound is coming out of the left, follow these steps to pair the two earbuds together.

1 Turn Bluetooth off on your device.

Turn both earbuds off (by pressing and holding each earbud button until voice prompt says 'good bye' or you see no lights).



2 When earbuds are off, **press and hold 15+ seconds on the RIGHT earbud button.**

While holding, earbud will **flash blue and white.**

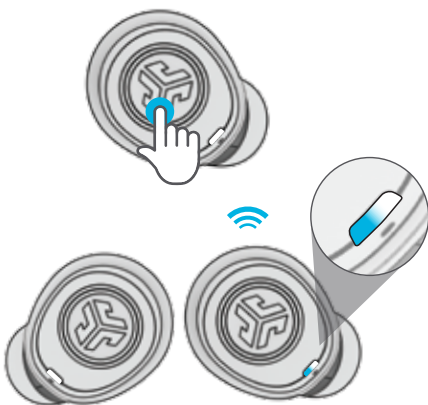
Release when earbud **flashes white.**



3 Repeat process with LEFT earbud: **Press and hold 15+ seconds on earbud button.**

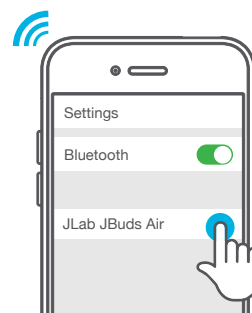
Release when earbud is **solid white.** Once earbuds connect, the right earbud will **flash blue and white** indicating it is ready to connect to Bluetooth.

Left earbud will be **solid white.**



4 Turn your device Bluetooth back on.

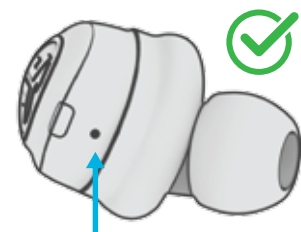
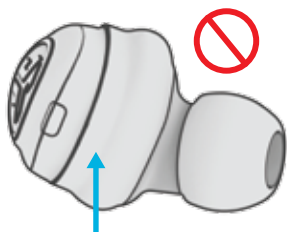
Select "JLab JBuds Air" to connect.



Note: To avoid having to reconnect the earbuds again, make sure you return the earbuds to the correct spot in the case. See *Charging Earbuds*.

ECHOES ON CALLS

If you experience microphone echo/call quality with the JBuds Air, make sure the Cush Fin is not blocking the microphone port.



QUICK TIPS

- The Bluetooth connection is established from the right earbud. For most stable connection, keep the device near right hand side or in right pocket.
- When receiving/taking calls, only the right earbud will accept and play from your mobile device. The left earbud will mute during calls and continue playback after call ends.
- If you prefer to wear only one earbud, you must wear the right earbud.

WARNING

Fully dry off the earbuds before putting in the charging case to avoid any damage to the case.

The earbuds are sweat/water resistant but the case is not.



CAUTIONS

- Avoid extreme heat, cold, and humidity.
- Avoid dropping or crushing the earbuds.
- Wax may build up in the earbud tips, lowering the sound quality. Carefully remove the wax with a cotton swab or other small tool to improve the sound quality.
- If you experience discomfort or pain, try lowering the volume or discontinuing use temporarily.
- If you experience regular discomfort while using this product, discontinue use and consult your physician.
- We recommend you treat your earbuds as you would a nice pair of sunglasses and keep them in safe location when not in use.



[Shop products](#) | [Product alerts](#) | [Burn-in your headphones](#)

JLab Audio + Burn-in Tool

