



**We love that you are rocking JLab!
We take pride in our products and fully stand behind them.**

JLAB®
JBuddies Pro
WIRELESS HEADPHONES



YOUR WARRANTY

All warranty claims are subject to JLab authorization and at our sole discretion. Retain your proof of purchase to ensure warranty coverage.



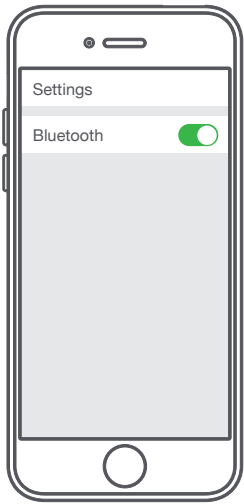
CONTACT US

Reach out to us at support@jlab.com or visit jlab.com/contact

REGISTER TODAY
jlab.com/register
 Product updates | How-to tips
 FAQs & more

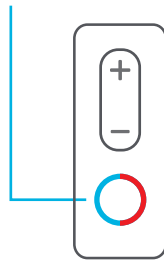
FIRST TIME SETUP: BLUETOOTH PAIRING

1 Turn on the Bluetooth in your device settings.

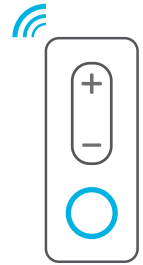
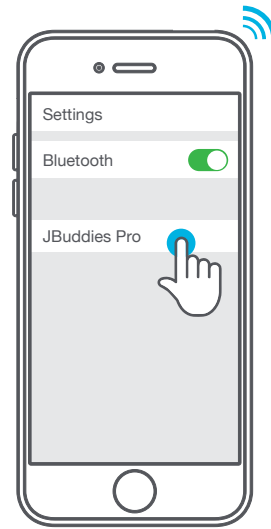


2 When the JBuddies Pro Wireless Headphones are powered off, press and hold the Power Button for approximately 10 seconds.

Fast blinking red and blue light indicates searching for Bluetooth device.



3 Select "JBuddies Pro" in your device settings to connect.



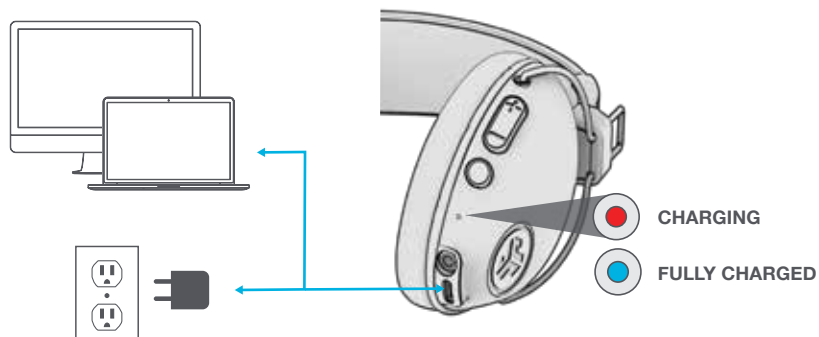
When the headphones are paired, voice prompts "You are connected" and **blue light will flash slowly.**

Notes:

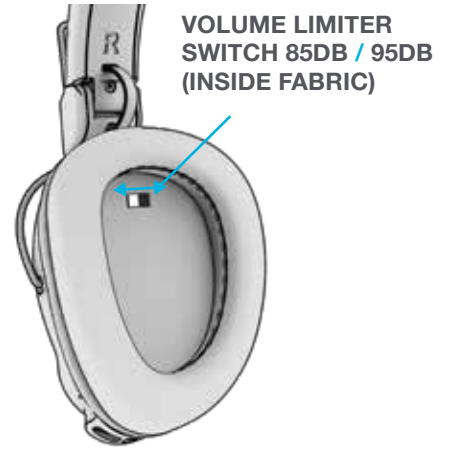
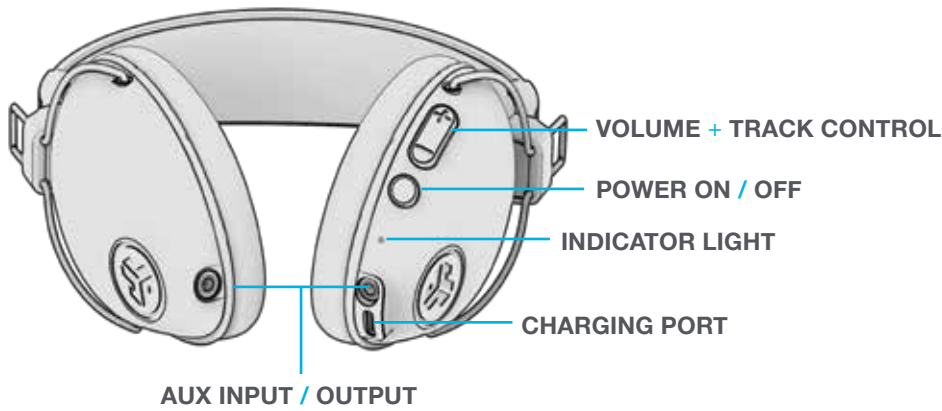
- Bluetooth is a wireless radio technology, which means it is sensitive to objects between the headphone and the connected device. The headphone is designed to be used within 33 feet (10 meters) of a connected device, with no major objects in between (walls, etc.).
- Once successfully connected, the headphone will memorize your device and automatically pair when turned on in the future. Only one device may be connected at a time. To pair a different device, first unpair the current one through its Bluetooth settings.
- If for any reason Bluetooth connection is lost, manually reconnect your Bluetooth device.

CHARGING

Connect the USB-C cable to computer or USB 5V 1A (or less) output device.



CONTROLS



BLUETOOTH PAIRING:

(Follow First Time Setup: Bluetooth Pairing)

POWER ON / OFF: Press and hold 3 seconds
(Slow blinking blue light indicates power is on)

PLAY / PAUSE / ANSWER / HANG UP CALLS: 1 Click

ACTIVATE SIRI (iOS) OR "OK GOOGLE" (ANDROID): 2 Clicks

RE-PAIRING AND ADDITIONAL DEVICES:

When power is off, press and hold 10 seconds



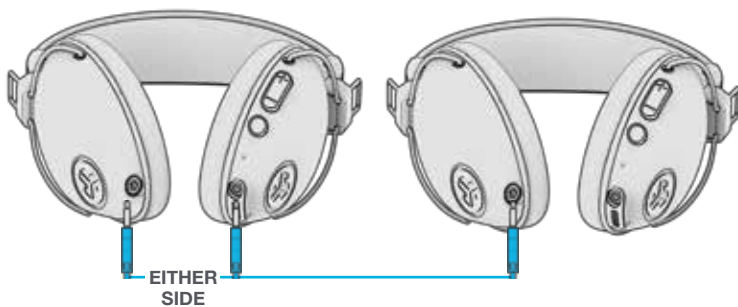
VOLUME UP / VOLUME DOWN: 1 Click

TRACK FORWARD / TRACK BACKWARD: 2 Second hold

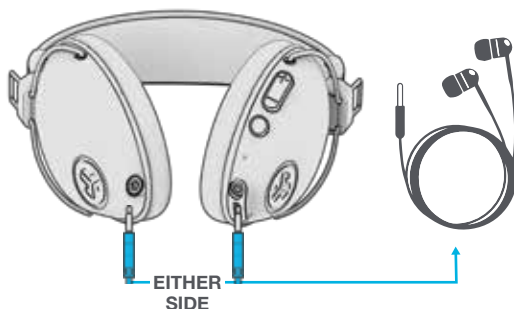
SHARE MODE

Connect the included **AUX CABLE** to either side to another J Buddies Pro or any other wired headphone/earbud for Share Mode.

OPTION 1:

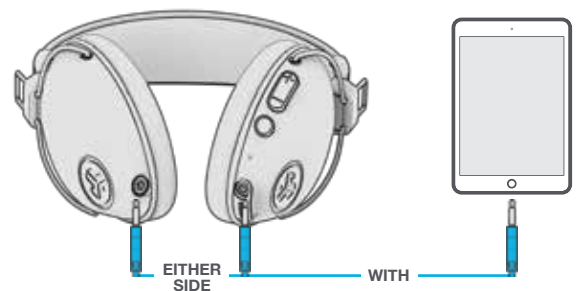


OPTION 2:



GO WIRED

Connect the **AUX CABLE** to a device for a wired connection.



Microphone should be installed on J Buddies Pro AUX input side to use.

PLAY / PAUSE / ANSWER / HANG UP CALLS: 1 CLICK

TRACK FORWARD: 2 CLICKS

TRACK BACKWARD: 3 CLICKS

CAUTIONS

- Avoid getting moisture or liquids on the headphone cups.
 - Avoid extreme heat, cold, and humidity.
 - Avoid dropping or crushing headphones, stressing the cable by rapid pulling or extreme force, or bending the cable at a sharp angle.
 - Wax may build up in headphone cups, lowering the sound quality. Carefully remove the wax with a cotton swab or other small tool to improve the sound quality.
 - If you experience discomfort or pain, try lowering the volume or discontinuing use temporarily.
 - If you experience regular discomfort while using this product, discontinue use and consult your physician.
 - We recommend you treat your headphones as you would a nice pair of sunglasses and keep them in safe location when not in use.
-



[Shop products](#) | [Product alerts](#) | [Burn-in your headphones](#)

JLab Store + Burn-in Tool

