



JLAB AUDIO
FLEX SPORT HEADPHONES

We love that you are rocking JLab Audio!
We take pride in our products and fully stand behind them.



YOUR WARRANTY

All warranty claims are subject to JLab Audio authorization and at our sole discretion. Retain your proof of purchase to ensure warranty coverage.



CONTACT US

Reach out to us at support@jlabaudio.com or visit jlabaudio.com/contact

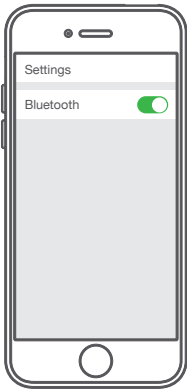
REGISTER TODAY

jlabaudio.com/register

Product updates | How-to tips
FAQs & more

FIRST TIME SETUP: BLUETOOTH PAIRING

- 1 Turn on the Bluetooth in your device settings.



- 2 Press and hold the Power Button for 10+ seconds.

The logo will **flash blue and white** indicating the headphone is ready to pair to your Bluetooth device.



- 3 Select "JLab Flex Sport" in your device settings.
Voice prompt "You are connected" followed by a **solid blue light** indicates you are connected.



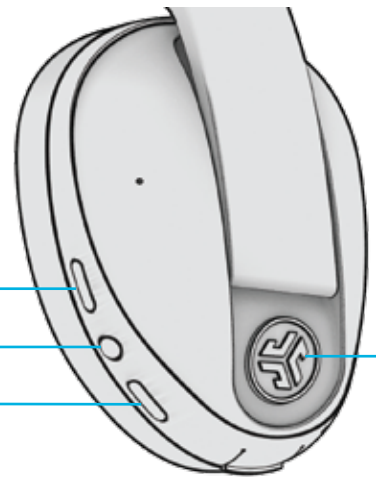
BLUETOOTH PAIRING NEW / ADDITIONAL DEVICES:

Follow the FIRST TIME SETUP with each additional device. The Flex Sport will remember up to 8 devices and will automatically connect to the last device that was previously paired. If multiple devices have been previously paired, simply turn OFF Bluetooth from unwanted devices and turn ON Bluetooth from chosen device to connect for next use.

Notes:

- Bluetooth is a wireless radio technology, which means it is sensitive to objects between the headphone and the connected device. The headphone is designed to be used within 33 feet (10 meters) of a connected device, with no major objects in between (walls, etc.).
- Once successfully connected, the headphone will memorize your device and automatically pair when turned on in the future. Only one device may be connected at a time. To pair a different device, first unpair the current one through its Bluetooth settings.
- If for any reason Bluetooth connection is lost, manually reconnect your Bluetooth device.

BUTTON FUNCTIONS



VOLUME UP: 1 click
TRACK FORWARD:
Press & hold 1+ seconds
TURN ON / OFF:
Press & hold 3+ seconds
PLAY / PAUSE / ANSWER / HANG UP:
1 click
SIRI (IOS) OR "OK GOOGLE" (ANDROID): 2 clicks
BLUETOOTH PAIRING:
(Follow First Time Setup)
VOLUME DOWN: 1 click
TRACK BACK:
Press & hold 1+ seconds

AMBIENT NOISE ON / OFF: 1 click
(Flex Sport will open surrounding noise when active)
EQ CHANGE: Press & hold 2+ seconds
(Flex Sport will cycle 3 EQ settings)

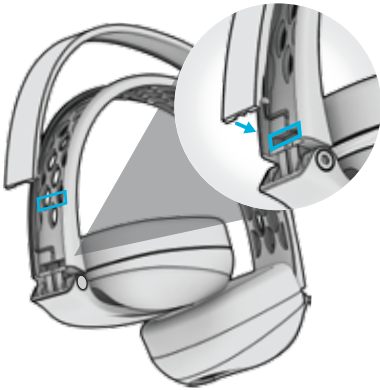
JLab SIGNATURE
JLab C3™ signature sound with amplified vocals and bass

BALANCED
Even sound with no additional sound enhancements

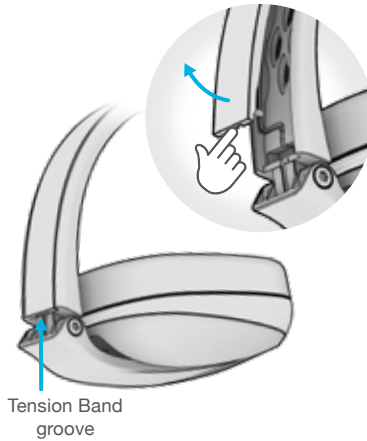
BASS BOOST
Amplified bass and sub-bass

FITTING: TENSION BANDS

1 INSTALLING: Fold in the hinges and locate the locking channels on the headphone. Snap in the Tension Band on both sides. (Under each band lists FLEXFIT or FIRMFIT.)

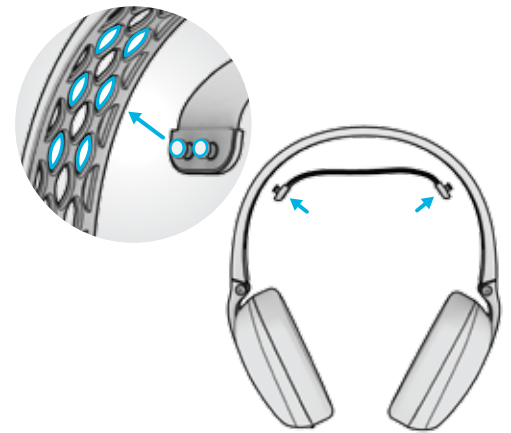


2 REMOVING: Fold in the hinges and locate the Tension Band groove. Pull outward with your finger to unlock.



OPTIONAL HEADBAND PAD

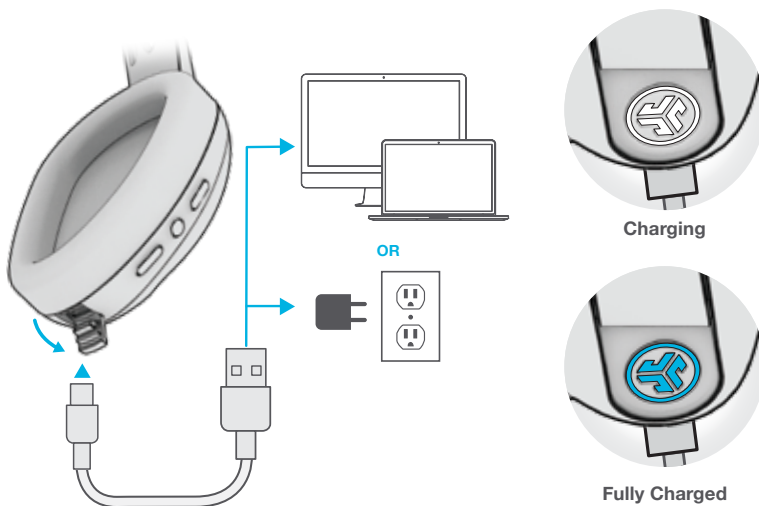
Plug in the dual-lock on one of the dual channels from the inside headband. Repeat same location for other side.



CHARGING

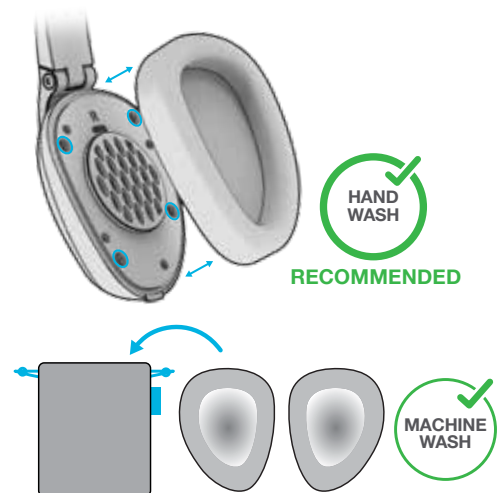
Note: Flex Sport is capable of charging when powered on or off. Open the door below on the Flex Sport to connect to USB-C and charge from a USB input.

White light will indicate charging and **turn blue** once fully charged.



REMOVABLE EAR PADS

Remove by holding the cushion and pull straight outward. If you machine wash, place ear pads in the provided travel case before cycle. **Machine Wash Gentle/Delicates. Tumble Dry, No Heat.**



CAUTIONS

- Avoid getting moisture or liquids on the headphone cups.
 - Avoid extreme heat, cold, and humidity.
 - Avoid dropping or crushing headphones, stressing the cable by rapid pulling or extreme force, or bending the cable at a sharp angle.
 - Wax may build up in headphone cups, lowering the sound quality. Carefully remove the wax with a cotton swab or other small tool to improve the sound quality.
 - If you experience discomfort or pain, try lowering the volume or discontinuing use temporarily.
 - If you experience regular discomfort while using this product, discontinue use and consult your physician.
 - We recommend you treat your headphones as you would a nice pair of sunglasses and keep them in safe location when not in use.
-



[Shop products](#) | [Product alerts](#) | [Burn-in your headphones](#)

JLab Audio + Burn-in Tool

