



JLAB AUDIO  
EPIC SPORT 2  
EARBUDS

We love that you are rocking JLab Audio!  
We take pride in our products and fully stand behind them.



### YOUR WARRANTY

All warranty claims are subject to JLab Audio authorization and at our sole discretion. Retain your proof of purchase to ensure warranty coverage.



### CONTACT US

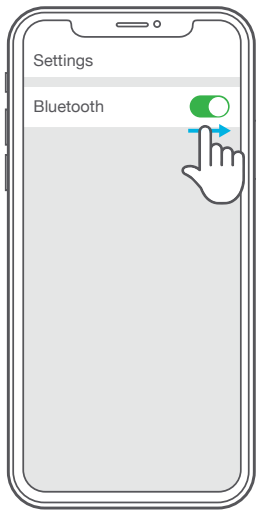
Reach out to us at [support@jlabaudio.com](mailto:support@jlabaudio.com) or visit [jlabaudio.com/contact](http://jlabaudio.com/contact)

## REGISTER TODAY

[jlabaudio.com/register](http://jlabaudio.com/register)  
product updates | how-to tips  
FAQs & more

## BLUETOOTH PAIRING

- 1 Turn on the Bluetooth in your device settings.



- 2



Press and hold button for **8 seconds**.  
Release.  
Light will **blink red and blue** to indicate pairing mode.

- 3

- Select "JLab Epic Sport" in your device settings to connect.

Light will **slow blink blue** when Bluetooth is paired.



## RECURRING USE

Once JLab Epic Sport 2 has initially paired to your device, the earbuds will auto-connect to your Bluetooth device when powered back ON. (Follow **BUTTON FUNCTIONS** instructions)

## CHARGING



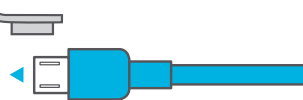
CHARGING



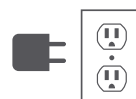
FULLY CHARGED



Open USB door and connect the cable to a computer or 5v (or less) power source to charge.



OR



## BUTTON FUNCTIONS

### VOLUME UP:

Quick press

### TRACK FORWARD:

Press & hold 2 seconds

### POWER ON:

Press & hold 3 seconds

### POWER OFF:

Press & hold 5 seconds

### PLAY / PAUSE / ANSWER / HANG UP:

Quick press

### BLUETOOTH PAIR:

Press & hold 8 seconds  
(see Bluetooth Pairing)

### ACTIVATE GOOGLE / SIRI:

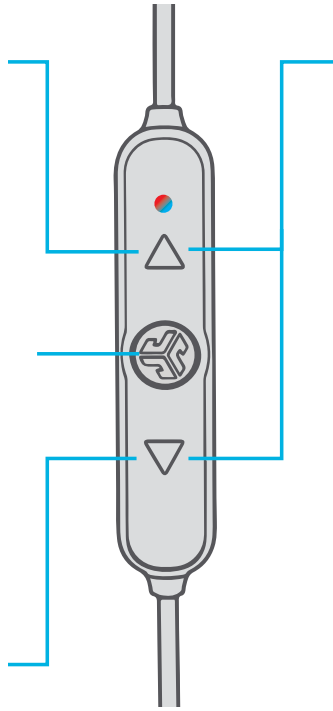
Click twice

### VOLUME DOWN:

Quick press

### TRACK BACKWARD:

Press & hold 2 seconds



## EQUALIZER MODES

Quick press both buttons for different EQ settings  
(Epic Sport 2 will cycle 3 EQ settings)



### JLab SIGNATURE (One Beep)

JLab C3™ signature sound  
with amplified bass and vocals



### BALANCED (Two Beeps)

Even sound with no  
additional enhancements



### BASS BOOST (Three Beeps)

Amplified bass  
and sub-bass

## VOICE PROMPTS

“HELLO” = Power is ON.

“BATTERY FULL” = 100-75%

“BATTERY MEDIUM” = 75-25%

“LOW BATTERY” = Less than 25%

### “READY TO PAIR”

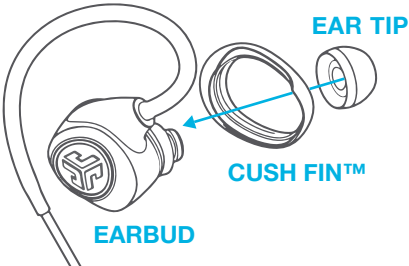
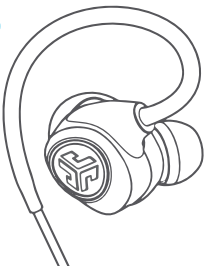
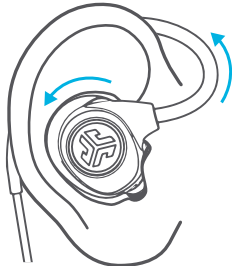
JLab Epic Sport 2 earbuds are ready  
to connect to your Bluetooth device.

### “YOU’RE CONNECTED”

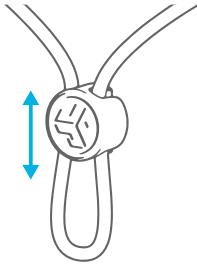
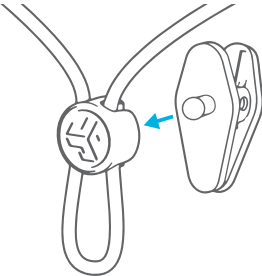
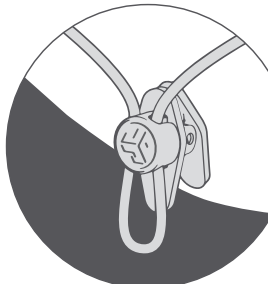
JLab Epic Sport 2 is connected to your  
Bluetooth device and ready for use.

“GOODBYE” = Power turning OFF.

## FITTING

-  1. Attach the **EAR TIP** and **CUSH FIN™** to the **EARBUD**.
-  2. Try various ear tips and Cush Fins to find the best fit.
-  3. Rotate the earbud into ear canal and bend the Memory Wire to desired position.

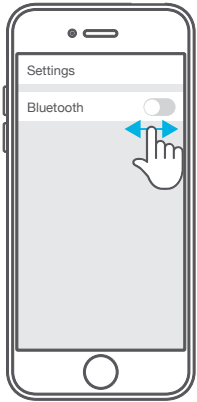
## CABLE CLIP USE

-  1. Attach optional cable holder to tighten or loosen the cable during use.
-  2. Insert the optional cable clip to the back of the cable holder.
-  3. Open the cable clip and attach to apparel.

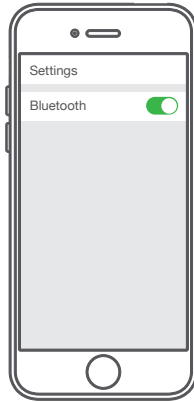
## CONNECTION TROUBLESHOOTING

### I DO NOT SEE JLAB EPIC SPORT IN MY DEVICE

- 1 Turn Bluetooth off and then back on in device settings.

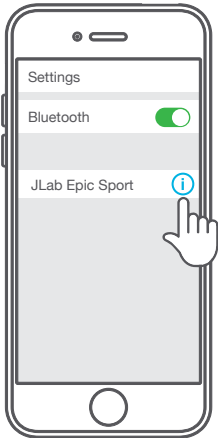


- 2 If you still do not see JLab Epic Sport, repeat **FIRST TIME SETUP: BLUETOOTH PAIRING** directions.

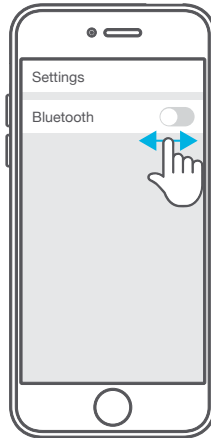


### JLAB EPIC SPORT 2 DOES NOT RECONNECT TO MY DEVICE AFTER POWERING ON

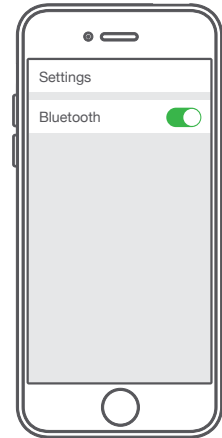
- 1 In device settings, forget the JLab Epic Sport.



- 2 Turn Bluetooth off then back on in device settings.



- 3 Repeat **FIRST TIME SETUP: BLUETOOTH PAIRING** directions.

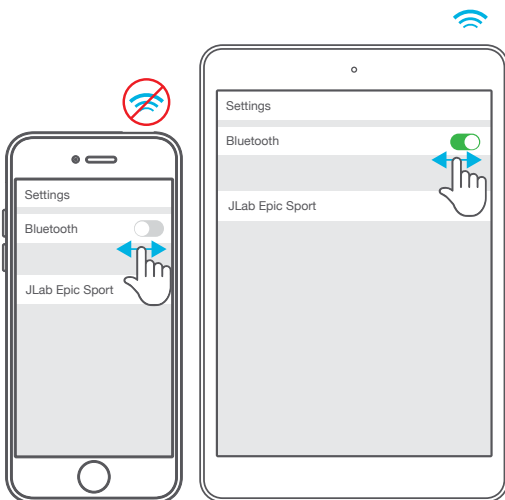


## CONNECTION TROUBLESHOOTING (CONTINUED)

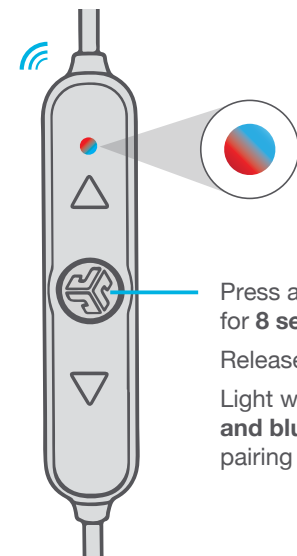
### BLUETOOTH IS CONNECTING TO AN UNWANTED DEVICE

**Note:** The JLab Epic Sport 2 can remember up to 8 devices. It will try to auto-connect to last device used.

- 1 If you have more than one device that was connected to JLab Epic Sport 2, turn OFF Bluetooth on unwanted devices and turn ON Bluetooth on chosen device.



- 2



Press and hold button for **8 seconds**.  
Release.  
Light will **blink red and blue** to indicate pairing mode.

## CAUTIONS

- Avoid getting moisture or liquids into the tip of the earbuds or charging port.
  - Avoid extreme heat, cold, and humidity.
  - Avoid dropping or crushing the earbuds, stressing the cable by rapid pulling or extreme force, or bending the cable at a sharp angle.
  - Wax may build up in the earbud tips, lowering the sound quality. Carefully remove the wax with a cotton swab or other small tool to improve the sound quality.
  - If you experience discomfort or pain, try lowering the volume or discontinuing use temporarily.
  - If you experience regular discomfort while using this product, discontinue use and consult your physician.
  - We recommend you treat your earbuds as you would a nice pair of sunglasses and keep them in safe location when not in use.
- 



[Shop products](#) | [Product alerts](#) | [Burn-in your headphones](#)

JLab Audio + Burn-in Tool

