



We love that you are rocking JLab!  
We take pride in our products and fully stand behind them.

JLAB  
EPIC AIR ANC  
EARBUDS



#### YOUR WARRANTY

All warranty claims are subject to JLab authorization and at our sole discretion. Retain your proof of purchase to ensure warranty coverage.



#### CONTACT US

Reach out to us at [support@jlab.com](mailto:support@jlab.com) or visit [jlab.com/contact](http://jlab.com/contact)

### REGISTER TODAY

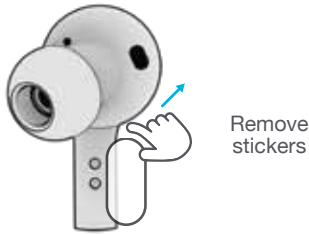
[jlab.com/register](http://jlab.com/register)

[Product updates](#) | [How-to tips](#)  
[FAQs & more](#)

## FIRST TIME SETUP

### 1 AUTO-CONNECTING EARBUDS

A. Take earbuds out of the charging case and remove stickers.

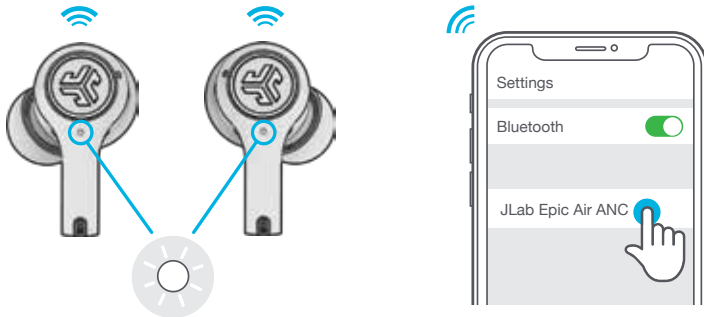


B. Press and hold 3+ seconds on each earbud. **Blinking blue and white light** on one earbud will indicate ready to pair to your device.



### 2 CONNECTING BLUETOOTH

Select "JLab Epic Air ANC" in your device settings. Voice prompt "Bluetooth connected" followed by **solid white lights** will indicate you are connected.



### ADDING NEW / ADDITIONAL BLUETOOTH DEVICES:

**Turn OFF Bluetooth** from any previously connected device. **Turn ON Bluetooth** from new device. Take earbuds out of the case. Earbuds will automatically enter Bluetooth Pairing. Select "JLab Epic Air ANC" in new device settings to connect.

## CONTROLS

LEFT TOUCH SENSOR



RIGHT TOUCH SENSOR

**VOLUME DOWN:** Single tap  
**SIRI (iOS) or "OK GOOGLE" (ANDROID):** Double tap  
**BE AWARE / ANC ON / ANC OFF:** Press and hold 1+ sec  
**EQ CHANGE:** Triple tap

**VOLUME UP:** Single tap  
**PLAY / PAUSE:** Double tap  
**TRACK FORWARD:** Press and hold 1+ sec  
**EQ CHANGE:** Triple tap

**ANSWER:** Single Tap Left or Right

**HANG UP:** Double Tap Left or Right

**REJECT INCOMING CALL:** Press and hold 1+ seconds Left or Right

**MUSIC / MOVIE MODE:** Press and hold both touch sensors simultaneously 3+ seconds.

**POWER OFF WITHOUT CHARGING CASE:** Turn off your Bluetooth from your device settings. The earbuds will then power off after 3 minutes.

## VOICE PROMPTS

**"Hello":** Power ON

**"Ready to Pair":**

Epic Air ANC is ready to pair to your Bluetooth device

**"Be Aware":** Hear your surroundings

**"ANC ON":** Noise canceling ON

**"ANC OFF":** Noise canceling OFF

**"Bluetooth Connected":**

Earbud is connected to device

**"Battery Full":** 100-75%

**"Battery Medium":** 75-25%

**"Low Battery":** Less than 25%  
(When power decreases to 10%, "Low Battery" will play one time)

**"Goodbye":** Power OFF

## EQUALIZER MODES

Triple tap either earbud for different EQ settings. Voice prompts will indicate EQ settings (Epic Air ANC will cycle 4 EQ settings) Customize each EQ setting by downloading the **JLab Sound App** in Apple/Google Play Store



**JLab SIGNATURE**  
JLab C3™ signature sound with amplified bass and vocals



**BALANCED**  
Even sound with no additional enhancements



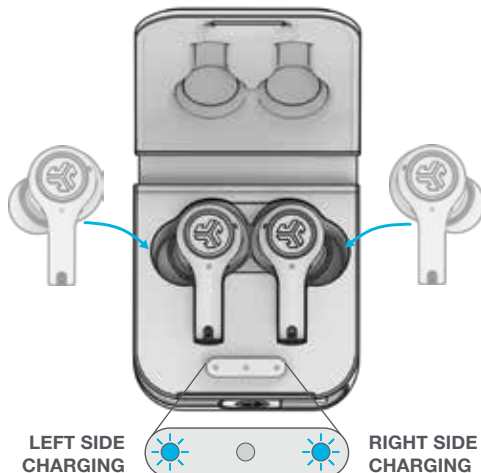
**BASS BOOST**  
Amplified bass and sub-bass



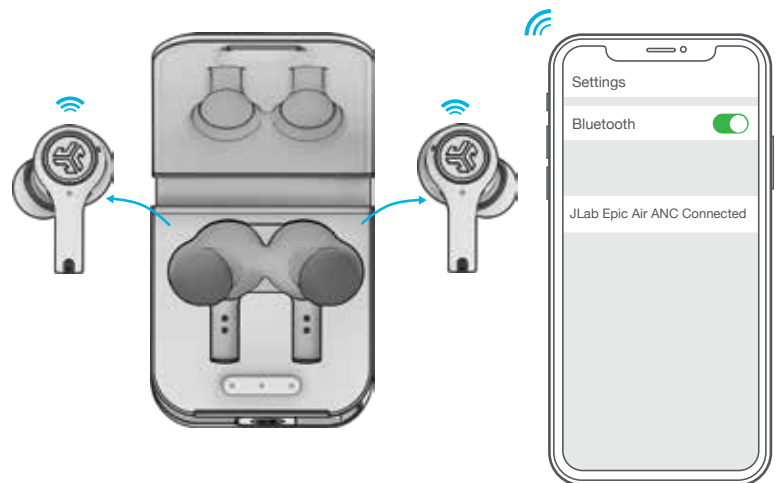
**BEEP**  
Custom EQ setting (download the JLab Sound App to customize)

## AUTO-POWER ON/OFF

**1** Placing the earbuds in the charging case will power OFF earbuds and start charging. **Blue lights** indicate earbuds are charging and will turn off when fully charged.

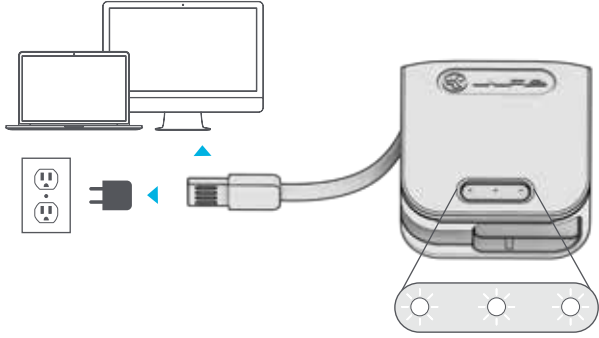


**2** When taken out of the charging case, they will auto power ON and connect.



## WIRED CHARGING

Connect the Epic Air ANC to computer or USB 5V 1A (or less) output device.

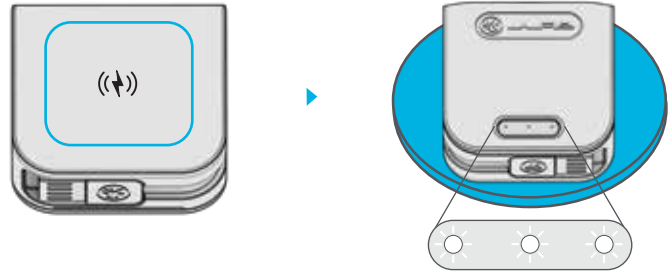


LEDs **pulse white** when charging and **turn solid white** when fully charged.

## WIRELESS CHARGING

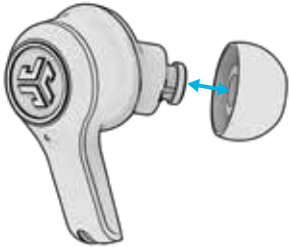
Place the charging case on a wireless charging platform.

LEDs **pulse white** when charging and **turn solid white** when fully charged.



## FITTING

Try all ear tips for best fit and proper seal.



Place in the ear canal and slightly rotate to adjust for best fit.



## FIND YOUR EARBUDS

Download the Tile app and activate to find your earbuds.  
Learn more at [jlab.com/tileapp](https://jlab.com/tileapp)

*Activating Tile will reduce earbud playtime.*



## DOWNLOAD THE APP

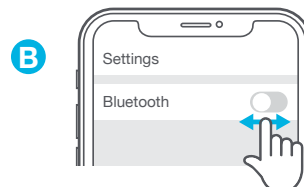
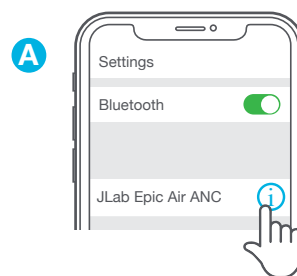
Customize Epic Air ANC features and update the latest software.  
Download the JLab Sound App in Apple/Google Play Store.



## TROUBLESHOOTING

### NO AUDIO IN ONE EARBUD OR EARBUDS ARE DISCONNECTED (MANUAL RESET)

- 1 Enter your Bluetooth device settings and forget the JLab Epic Air ANC. Fig **A**
- 2 Keep the earbuds in the charging case and on **ONE** earbud **quickly tap the touch sensor 7x times**. Light blinks blue 4 times. Fig **C**
- 3 Repeat with other earbud. **Quickly tap the touch sensor 7x times**. Light blinks blue 4 times. Fig **C**
- 4 Take both earbuds out of the charging case. Wait for one earbud to turn **solid white** and one to **blink blue/white**. You are now ready to pair to your Bluetooth device.



Quick 7x times

### BLUETOOTH DEVICE DOES NOT CONNECT/RECONNECT

- 1 Enter your Bluetooth device settings and forget the JLab Epic Air ANC. Fig **A**
- 2 Turn OFF then ON Bluetooth. Fig **B**
- 3 Take the earbuds out of the case. Wait for one to turn **solid white** and one to **blinking blue/white**.
- 4 Select "JLab Epic Air ANC" in device settings to reconnect.

Instructional videos at: [JLAB.COM/MANUALS](https://www.jlab.com/manuals)

### QUICK TIPS

- The left or right earbud can be used independently for music and phone calls. Simply choose one and take out from the case to connect.
- Only ONE Bluetooth device can be connected at a time. Turn off Bluetooth on unwanted devices and turn on Bluetooth on chosen device to connect.
- Fully dry off earbuds before putting in the charging case to avoid any damage to the case.

### WARNING

**Fully dry off the earbuds before placing in the charging case.**

If the earbuds are damp or wet, this will cause damage to the charging case. The warranty will be voided if the charging case shows damage by water/sweat.



### CAUTIONS

- Avoid extreme heat, cold, and humidity.
- Avoid dropping or crushing the earbuds.
- Wax may build up in the earbud tips, lowering the sound quality. Carefully remove the wax with a cotton swab or other small tool to improve the sound quality.
- If you experience discomfort or pain, try lowering the volume or discontinuing use temporarily.
- If you experience regular discomfort while using this product, discontinue use and consult your physician.
- We recommend you treat your earbuds as you would a nice pair of sunglasses and keep them in safe location when not in use.



[Shop products](#) | [Product alerts](#) | [Burn-in your headphones](#)

JLab Store + Burn-in Tool

