



JLAB AUDIO
EPIC ANC
|
EARBUDS

We love that you are rocking JLab Audio!
We take pride in our products and fully stand behind them.



YOUR WARRANTY

All warranty claims are subject to JLab Audio authorization and at our sole discretion. Retain your proof of purchase to ensure warranty coverage.



CONTACT US

Reach out to us at support@jlabaudio.com or visit jlabaudio.com/contact

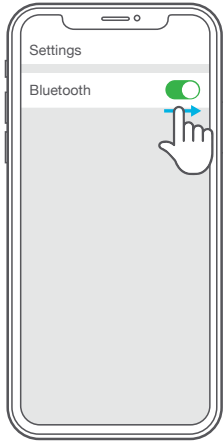
REGISTER TODAY

jlabaudio.com/register

Product updates | How-to tips
FAQs & more

FIRST TIME SETUP: BLUETOOTH PAIRING

- 1** Turn on the Bluetooth in your device settings.



- 2**



Press and hold button for **8 seconds**.
Release.
Lights will flash blue/red.

- 3**

Select "JLab Epic ANC" in your device settings to connect.

When the earbuds are paired, voice prompts "You are connected" and **blue light will flash slowly**.



RECURRING USE

Once JLab Epic ANC has initially paired to your device, the earbuds will auto-connect to your Bluetooth device when powered back ON. (Follow **BUTTON FUNCTIONS** instructions)

WARNING

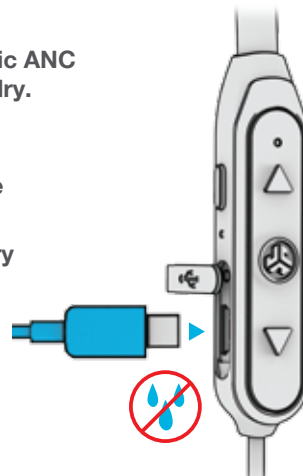
Make sure USB door is closed and fastened. This will protect against sweat and water damage.



Before charging, JLab Epic ANC earbuds need to be fully dry.

If there is any exposure to moisture, the internal components may become damaged.

It is best practice to air dry before charging.



BUTTON FUNCTIONS

ACTIVE NOISE CANCELING

ANC ON / OFF:

Press and hold 2+ seconds

**CYCLE LOW ANC / HIGH ANC /
BE AWARE:** Single Press



VOLUME DOWN:

Single Press

TRACK BACKWARD:

Press and hold 2+ seconds

POWER ON / OFF:

Press and hold 2+ seconds

PLAY / PAUSE / ANSWER / HANG UP CALLS:

Single Press

REJECT INCOMING CALL:

Press and hold 1+ second

ACTIVATE SIRI (iOS) OR "OK GOOGLE" (ANDROID):

Double Press

BLUETOOTH PAIRING:

See Bluetooth Pairing page

VOLUME UP:

Single Press

TRACK FORWARD:

Press and hold 2+ seconds

VOICE PROMPTS

"HELLO"

Power is ON.

"BATTERY FULL" = 100-75%

"BATTERY MEDIUM" = 75-25%

"LOW BATTERY" = Less than 25%

"READY TO PAIR"

JLab Epic ANC earbuds are ready to connect to your Bluetooth device.

"YOU'RE CONNECTED"

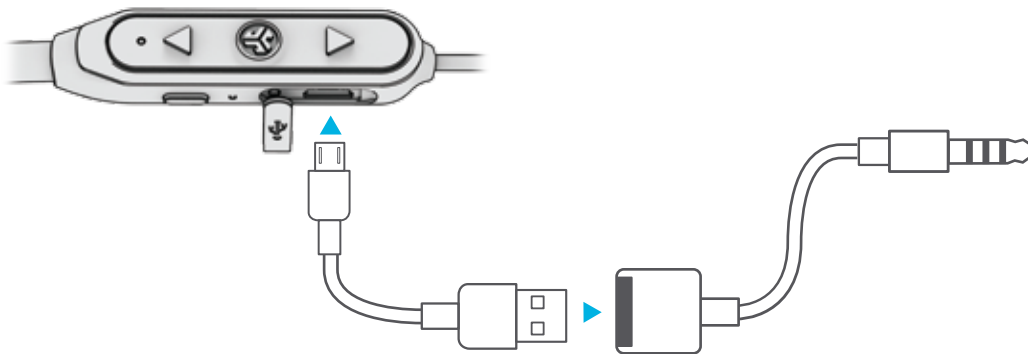
JLab Epic ANC earbuds are connected to your Bluetooth device and ready for use.

"GOODBYE"

Power turning OFF.

USING THE AUX ADAPTOR

1 Plug in USB cable into JLab Epic ANC and attach the AUX adaptor to the USB.



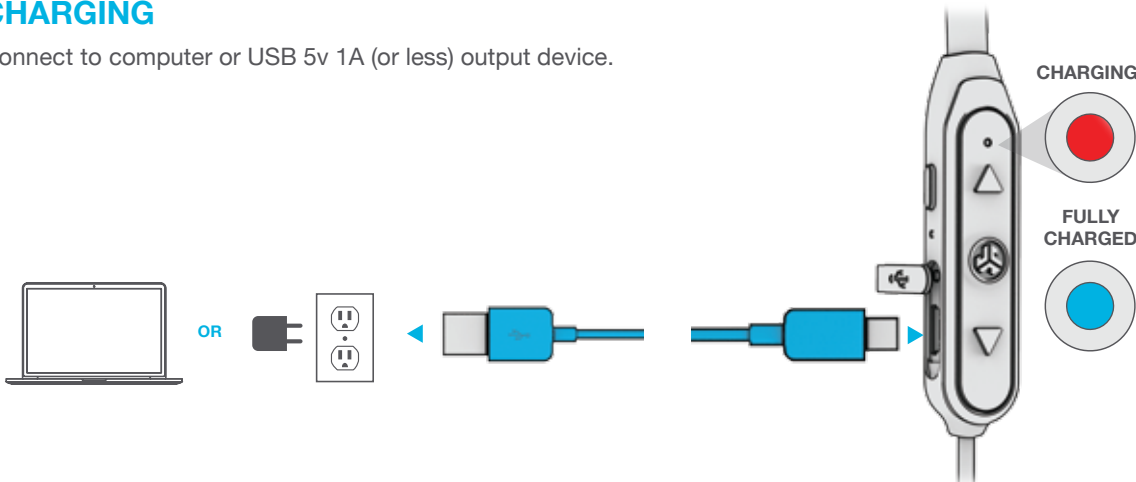
2 Play from an airplane or mobile device AUX.



Play wired with no power.

CHARGING

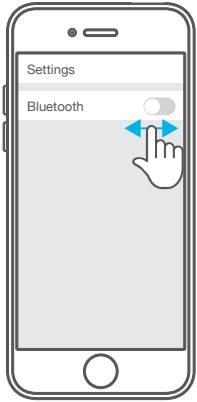
Connect to computer or USB 5v 1A (or less) output device.



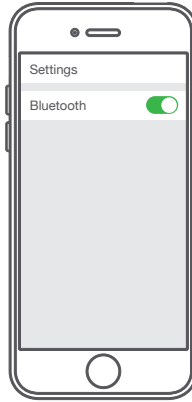
CONNECTION TROUBLESHOOTING

I DO NOT SEE JLAB EPIC ANC IN MY DEVICE

- 1 Turn Bluetooth off and then back on in device settings.

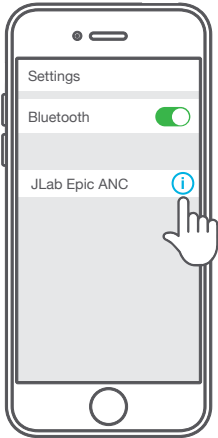


- 2 If you still do not see JLab Epic ANC, repeat **FIRST TIME SETUP: BLUETOOTH PAIRING** directions.

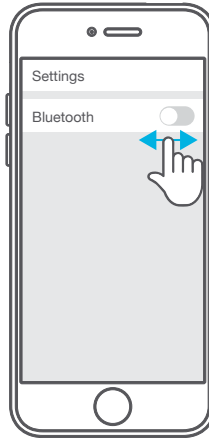


JLAB EPIC ANC DOES NOT RECONNECT TO MY DEVICE AFTER POWERING ON

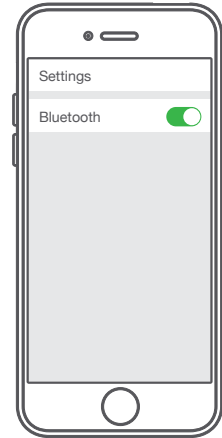
- 1 In device settings, forget the JLab Epic ANC.



- 2 Turn Bluetooth off then back on in device settings.



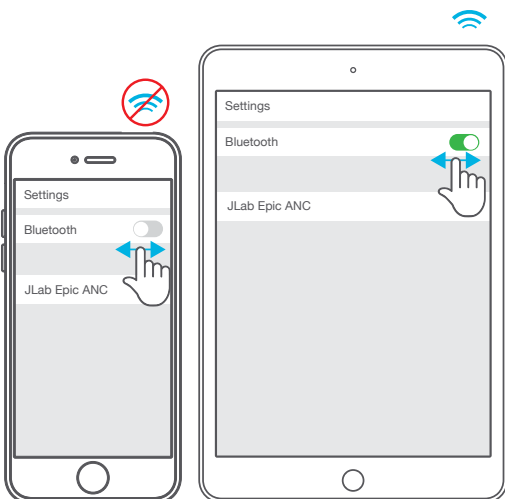
- 3 Repeat **FIRST TIME SETUP: BLUETOOTH PAIRING** directions.



BLUETOOTH IS CONNECTING TO AN UNWANTED DEVICE

Note: The JLab Epic ANC can remember up to 8 devices. It will try to auto-connect to last device used.

- 1 If you have more than one device that was connected to JLab Epic ANC, turn OFF Bluetooth on unwanted devices and turn ON Bluetooth on chosen device.



- 2



Press and hold button for **10 seconds**.

Release.

Light will **blink red and blue** to indicate pairing mode.

Select "JLab Epic ANC" in your device settings to connect.

Light will **slow blink blue** when Bluetooth is paired.

CAUTIONS

- Avoid getting moisture or liquids into the tip of the earbuds or charging port.
 - Avoid extreme heat, cold, and humidity.
 - Avoid dropping or crushing the earbuds, stressing the cable by rapid pulling or extreme force, or bending the cable at a sharp angle.
 - Wax may build up in the earbud tips, lowering the sound quality. Carefully remove the wax with a cotton swab or other small tool to improve the sound quality.
 - If you experience discomfort or pain, try lowering the volume or discontinuing use temporarily.
 - If you experience regular discomfort while using this product, discontinue use and consult your physician.
 - We recommend you treat your earbuds as you would a nice pair of sunglasses and keep them in safe location when not in use.
-



[Shop products](#) | [Product alerts](#) | [Burn-in your headphones](#)

JLab Audio + Burn-in Tool

