



**We love that you are rocking JLab Audio!
We take pride in our products and fully stand behind them.**

AUDIO
CRASHER MINI
SPEAKER



YOUR SATISFACTION IS GUARANTEED

You may exchange or return merchandise within 30 days of the purchase date. Learn more at jlabaudio.com/guarantee



YOUR WARRANTY

You may register your product at jlabaudio.com/register. All warranty claims are subject to JLab Audio authorization and at our sole discretion. Retain your proof of purchase to ensure warranty coverage.

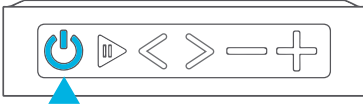


CONTACT US

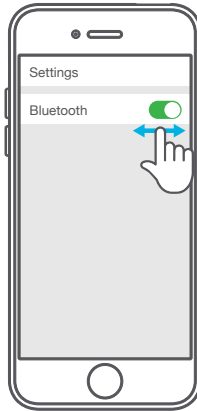
Reach out to us at support@jlabaudio.com or visit jlabaudio.com/contact

FIRST TIME SETUP: BLUETOOTH PAIRING

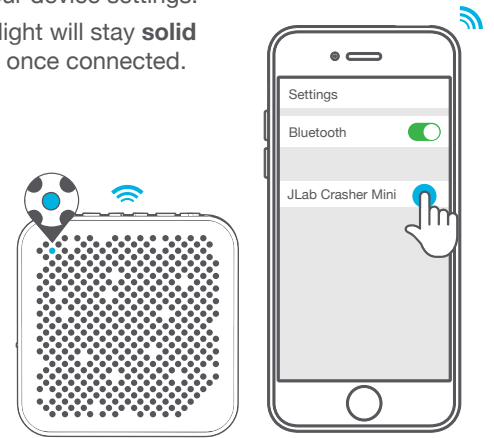
- 1 Press and hold the Power Button for 8+ seconds.
The Crasher Mini will automatically be in Bluetooth pairing mode upon start up.
The indicator light **flashes blue**.



- 2 Turn on Bluetooth in your device settings.



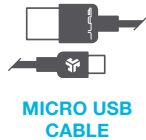
- 3 Select "JLab Crasher Mini" in your device settings.
The light will stay **solid blue** once connected.



Notes:

- Bluetooth is a wireless radio technology, which means it is sensitive to objects between the speaker and the connected device. The speaker is designed to be used within 33 feet (10 meters) of a connected device, with no major objects in between (walls, etc.).
- Once successfully connected, the speaker will memorize your device and automatically pair when turned on in the future. Only one device may be connected at a time. To pair a different device, first unpair the current one through its Bluetooth settings.
- If for any reason Bluetooth connection is lost, manually reconnect your Bluetooth device.

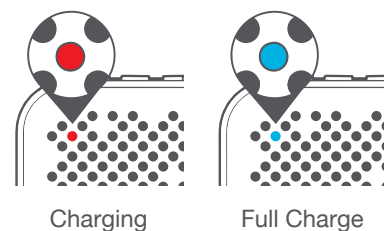
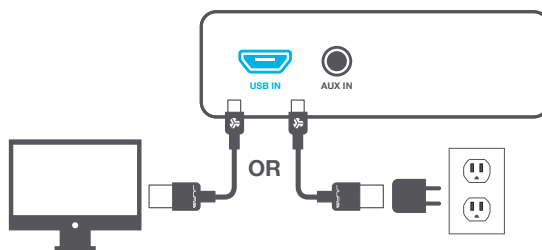
ACCESSORIES



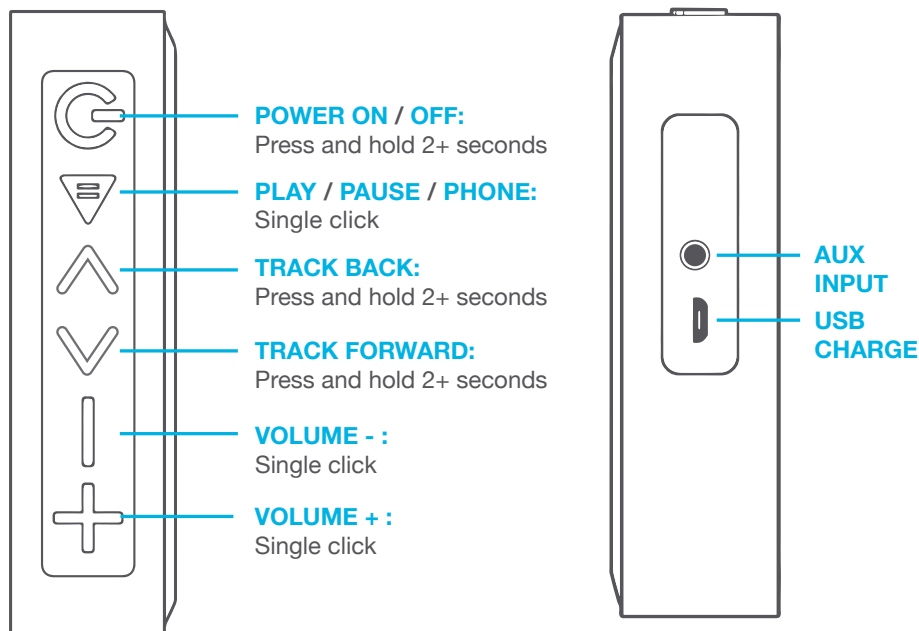
CHARGING

Note: For optimum performance, charge overnight with Micro USB cable prior to using.

- 1 Before charging, it is recommended you turn off the Crasher Mini.
- 2 Open the silicone cover on the side of the speaker and connect the Crasher Mini to your computer or wall outlet using the provided Micro USB cable and/or 5V power adaptor.
- 3 When charging, the indicator light on the front of the Crasher Mini will **turn solid red** and **turns solid blue** once fully charged.



SPEAKER PORTS / BUTTONS

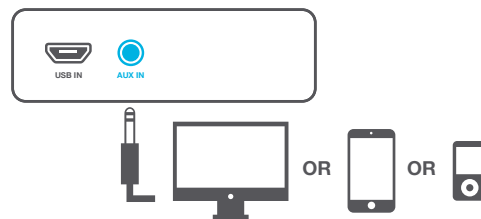


AUX IN FUNCTION

The Crasher Mini has an **AUX IN** port. You can use audio from devices such as a mobile phone, computer, MP3 player, etc. with a 3.5mm AUX cable.

Use a 3.5mm AUX cable (not included) to connect the audio output terminals of your chosen device to the audio input terminal (AUX IN) of the Crasher Mini. The **blue indicator light will flash slowly**.

Note: The Crasher Mini will give priority to AUX playback whenever both the AUX input terminal and the Bluetooth are connected simultaneously. Once the 3.5mm device is disconnected, the Crasher Mini will return to the music on the Bluetooth connected device.



WARM-UP YOUR SPEAKERS

Optional: Burn-in is the process for exercising new audio equipment. We recommend 40 hours of burn-in time for most speakers to reach optimal performance. The main purpose of the process is to loosen the diaphragm of a newly crafted speaker and to stress the speaker driver. Normal, everyday use can also burn-in the speakers though JLab's proprietary burn-in provides an ideal mix of sounds and frequency sweeps to achieve this.

 **Burn-in your audio equipment with the JLab Audio app available on the App Store and Google Play.**
Or access the burn-in method at: jlabaudio.com/burnin

CAUTIONS

- Listen to music at a suitable volume for enjoyment in order to not cause damage to your hearing and/or speaker system.
- Store in a well ventilated area.
- To reduce the risk of fire or electric shock, do not expose this speaker or the accessories to rain, water drops or moisture.
- Keep the unit away from an open flame such as fire, candle, etc.
- Avoid extreme heat, cold and humidity.
- Only use attachments/accessories specified by the manufacturer.
- Do not drop any objects into the unit through the openings.
- Do not place anything heavy on the unit.
- To ensure proper ventilation and proper operation, never cover or block the slots and opening with a cloth or other materials.
- The maximum working temperature is 95°F/35°C.
- Lithium batteries (like all rechargeable batteries) are recyclable and should NOT be recycled or disposed of in normal household waste. Contact your local government for disposal or recycling practices in your area.