



JLAB AUDIO  
BOUNCER  
SPEAKER

**We love that you are rocking JLab Audio!**  
**We take pride in our products and fully stand behind them.**



### YOUR SATISFACTION IS GUARANTEED

You may exchange or return merchandise within 30 days of the purchase date.  
Learn more at [jlabaudio.com/guarantee](http://jlabaudio.com/guarantee)



### YOUR WARRANTY

You may register your product at [jlabaudio.com/register](http://jlabaudio.com/register). All warranty claims are subject to JLab Audio authorization and at our sole discretion. Retain your proof of purchase to ensure warranty coverage.



### CONTACT US

Reach out to us at [support@jlabaudio.com](mailto:support@jlabaudio.com) or visit [jlabaudio.com/contact](http://jlabaudio.com/contact)

## ACCESSORIES

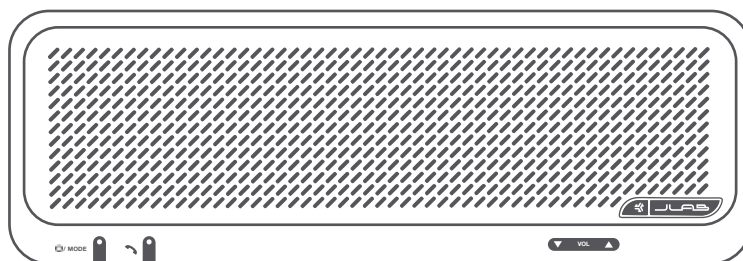


AC POWER  
ADAPTER



REMOTE  
CONTROL

## SPEAKER PORTS / BUTTONS



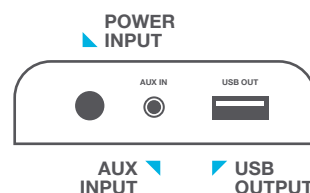
POWER / MODE  
BUTTON

WIRELESS INDICATOR /  
PHONE BUTTON

VOLUME  
DOWN

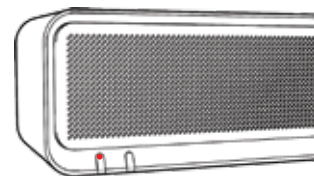
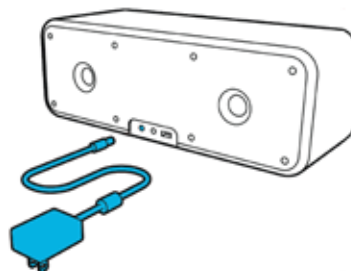
VOLUME  
UP

## BACK PORTS



## POWER

- 1 Connect the Bouncer to the power adapter and plug it into a wall socket.
- 2 Press the Power / Mode button. The **red light** will indicate power is on.
- 3 Press button once to toggle between Bluetooth and AUX mode.
- 4 Press and hold button for about 5 seconds to power off.



## BLUETOOTH FUNCTION

- 1 Power on the Bouncer and your Bluetooth device. The Bouncer will enter Bluetooth pairing mode indicated by the **blinking blue light**.
- 2 Use your Bluetooth device to search for the Bluetooth signal. Please allow 10-20 seconds for your device to connect. JLab Bouncer will appear on your Bluetooth device list. Enter PIN code "0000" if prompted.
- 3 Bluetooth connection is indicated by the **solid blue light**. The unit will sync to play songs on your device when connected successfully.



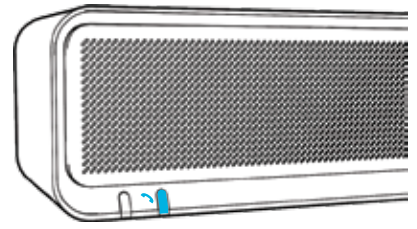
### Notes:

- Bluetooth is a wireless radio technology, which means it is sensitive to objects between the speaker and the connected device. The speaker is designed to be used within 33 feet (10 meters) of a connected device, with no major objects in between (walls, etc.).
- Once successfully connected, the speaker will memorize your device and automatically pair when turned on in the future.
- Only one device may be connected at a time. To reset the Bouncer and void any existing connections, disconnect your first device, then follow the steps above to connect your new device.
- If for any reason Bluetooth connection is lost, manually reconnect your Bluetooth device.

## MAKE + RECEIVE TELEPHONE CALLS

The Bouncer includes a built-in mic and call control for hands-free calls.

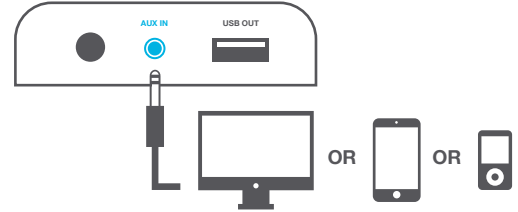
- 1 Make sure that your smart phone is connected to the Bouncer via Bluetooth. Bluetooth connection is indicated by the **solid blue light**.
- 2 When you receive a call, press the Phone button to answer.
- 3 Press the Phone button again to end a call.



## AUX IN FUNCTION

The Bouncer has an **AUX IN** port. You can use audio from devices such as a mobile phone, computer, MP3 player, etc. with a 3.5mm AUX cable.

- 1 Press Power / Mode button to shift from Bluetooth mode to AUX mode.
- 2 Plug the cable from your audio device into the AUX connector on the back.
- 3 To gain optimal volume levels, adjust the output volume level on both the source device and the Bouncer itself.

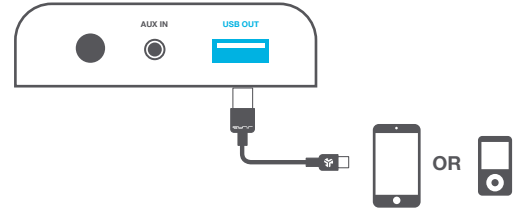


## CHARGE YOUR PORTABLE DEVICES

The Bouncer can charge your favorite music devices including cell phones, tablets, MP3 Players and more.

Connect your portable device with its own charging cable (not included) to the USB port on the back of the Bouncer speaker.

**Note:** The Bouncer will supply a current of 1A. This will charge most cell phones and portable devices. Some tablets, including the iPad, require at least 2.1A of power to charge up quickly or if their battery is less than 30%. While the Bouncer's power pack might not charge certain tablets as fast as it would a cell phone, it can still offer a power boost when your tablet's battery is over 30%.



## REMOTE FUNCTIONS



## TROUBLESHOOTING

- **Speaker will not turn on**
  - Make sure your system is connected to a working power outlet.
  - One click should turn on the speaker.
- **Paired Bluetooth device will not connect**
  - If your device requires a passkey, make sure you entered "0000".
  - Turn the Bouncer off then back on and try again.
  - Remove the Bouncer from your pairing list, then try repairing it.
- **The Bouncer indicates a connection, but is not playing music**
  - Turn off or disable Bluetooth on all other paired devices nearby and reconnect the device you want to hear.
  - Turn the Bouncer off then back on.
- **Cannot pair The Bouncer with my Bluetooth device**
  - Make sure your Bluetooth device is discoverable (Bluetooth is on).
  - Your Bluetooth device may be out of range – try moving it closer.
- **No audio from a Bluetooth device**
  - Make sure your Bluetooth device supports the transfer of audio.
  - Move your Bluetooth device and/or the Bouncer away from other devices that generate electromagnetic interference.
  - Disable the Bluetooth functionality of all other nearby devices.
  - Turn the Bouncer off then back on.
- **No audio from a Bluetooth device**
  - Make sure the Bouncer is not muted, and the volume is up.
  - Make sure your device is playing audio, and the volume is up.
  - Your Bluetooth device may be out of range – try moving it closer.
  - Turn the Bouncer off then back on.
- **No audio from the AUX source**
  - Make sure your connected device is on and playing.
  - Make sure the Bouncer is in AUX IN mode.
  - Make sure the 3.5mm plug is fully inserted into the Bouncer.

## CAUTIONS

- Listen to music at a suitable volume for enjoyment in order to not cause damage to your hearing and/or speaker system.
- Store in a well ventilated area.
- Protect the power cord from being walked on or pinched particularly at plugs, convenience receptacles, and the point where they exit from the apparatus. If the power cord is damaged, it must be repaired by a qualified repairer.
- To reduce the risk of fire or electric shock, do not open or expose this speaker or the accessories to rain, water drops or moisture.
- Do not install near any heat source such as radiators, heat registers, stoves, or other apparatus (including amplifiers) that produce heat.
- Keep the unit away from an open flame such as fire, candle, etc.
- Avoid extreme heat, cold and humidity
- Only use attachments/accessories specified by the manufacturer.
- The speaker should be connected to power supply only of the type described in the operating instructions or as marked on the speaker.
- Clean only with dry cloth. For stubborn stains, use a soft cloth dampened with a weak solution of mild detergent and water. Dry the speaker immediately afterwards with a clean cloth.
- Do not use abrasive clothes, thinners, alcohol, or other chemical solvents as they may damage the finish or remove the panel lettering.
- Do not drop any objects into the unit through the openings.
- Do not place anything heavy on the unit.
- To ensure proper ventilation and proper operation, never cover or block the slots and opening with a cloth or other materials.
- The optimum working temperature is 32-104°F (0-40°C).
- The optimum working humidity is 30%~80%.
- Unplug this speaker during lightning storms or when unused for long periods of time.
- Lithium batteries (like all rechargeable batteries) are recyclable and should NOT be recycled or disposed of in normal household waste. Contact your local government for disposal or recycling practices in your area.