

## Slimline LED Channel - 961 Series

The **961 Series** is a Slimline LED Channel compatible with **LED Strips up-to 0.63" (16mm) wide**.

This profile has a **wide range of accessories** to help you find the best fit for your application.

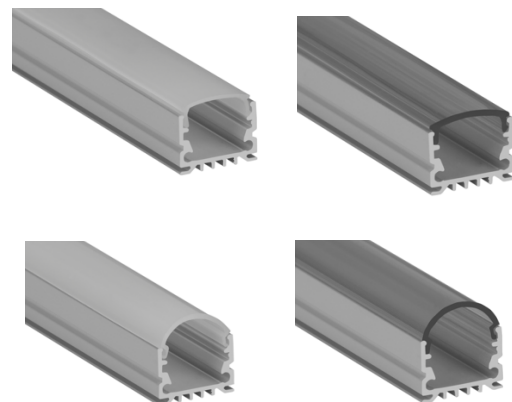
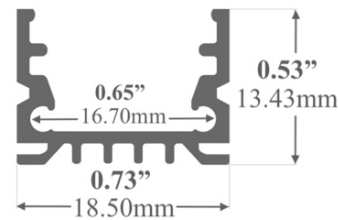
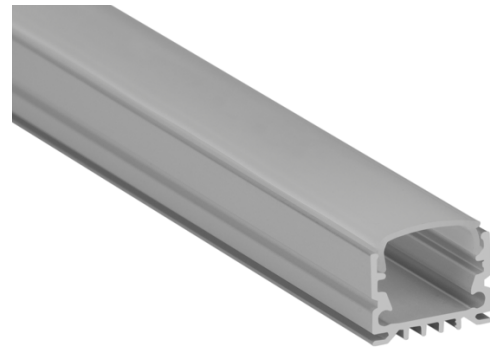
Thanks to its Heatsink design, 961 Series provides **better cooling** and helps to **extend the lifespan of your LED Strip**.

Due to its high side walls, it helps to build **Dot-Less (Hotspot-Free)** LED Fixtures using appropriate LED Strips.

**Easy Installation** with Mounting Brackets and Snap-In Diffusers.

Type:.....**LED Channel**  
 Material:....**Aluminum 6063-T5**  
 Surface:.....**Clear Anodized**  
 Height:.....**13.43mm / 0.53"**  
 Width:.....**18.50mm / 0.73"**

**Length Availability**  
 4ft (Actual Size 47") / 1.20m  
 8ft (Actual Size 94") / 2.40m  
 10ft (Actual Size 118") / 3.00m  
 Custom Lengths **up to 3.05m / 10ft**

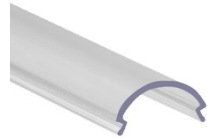


## Accessories

### Diffuser Cover Lens



Clear Flat Diffuser  
D21



Clear Round Diffuser  
D22



Opal Flat Diffuser  
D23



Opal Round Diffuser  
D24

### End Caps



E47  
Plastic End Cap for  
Flat Diffusers  
(White or Grey)



E48  
Plastic End Cap for  
Round Diffusers  
(White or Grey)



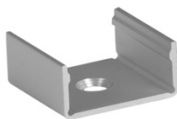
E49  
Large White Plastic  
End Cap for Flat  
Diffusers



E50  
Large Frosted Plastic  
End Cap for Flat  
Diffusers



### Mounting



963-BRC  
Flat Surface Mounting Bracket