

LED Channel - 703 Series

The **703 Series** is a **medium-sized low-profile** LED Aluminum Channel compatible with **LED Strips up-to 0.79" (20mm) wide**.

It's designed for **high output LED lighting applications** compared to slimline channels with its thicker heatsink design. It is a perfect selection for high-output **Horticulture Grow Lighting** applications as well as **outdoor wall-washing** applications.

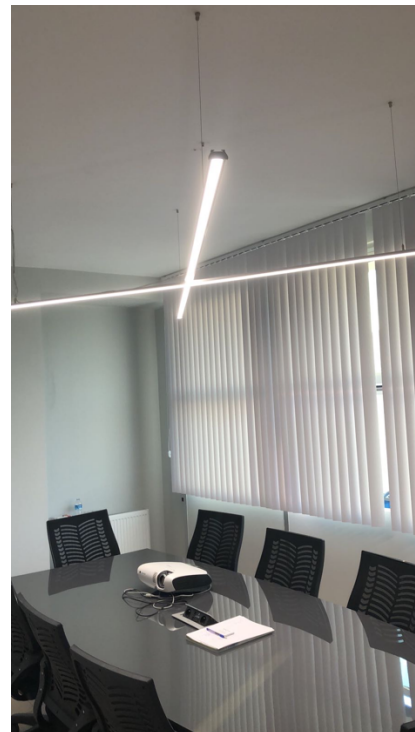
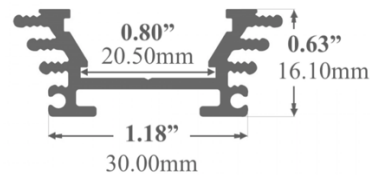
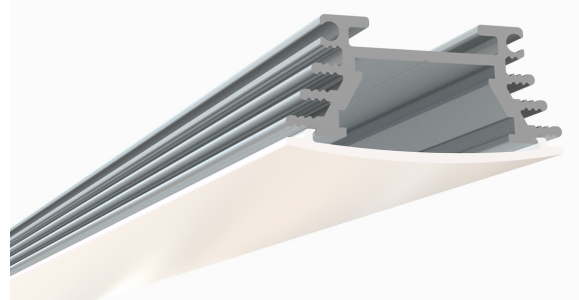
Thanks to its **mounting channel** on its back side, it features a **wide range of installation options**.

703 Series can be used with three different mounting options;

- Pendant LED Channel with **Suspension Kit**
- Surface Mount LED Channel with **Flat Surface Mounting Brackets**
- Angle Adjustable LED Channels with **Adjustable Mounting Brackets**

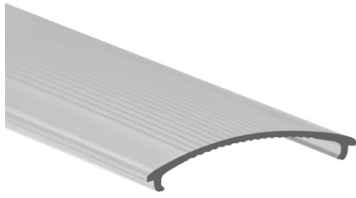
Type:.....LED Channel
 Material:...**Aluminum 6063-T5**
 Surface:.....**Clear Anodized**
 Height:.....**16.10mm / 0.63"**
 Width:.....**30.00mm / 1.18"**

Length Availability
 4ft (Actual Size 47") / 1.20m
 8ft (Actual Size 94") / 2.40m
 10ft (Actual Size 118") / 3.00m
 Custom Lengths **up to 3m / 10ft**

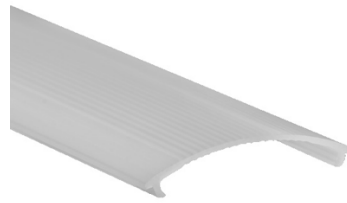


Accessories

Diffuser Cover Lens



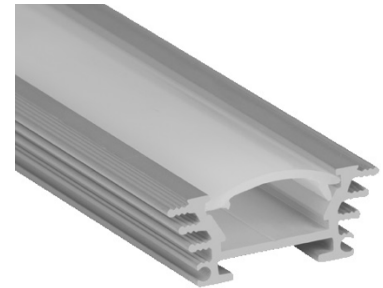
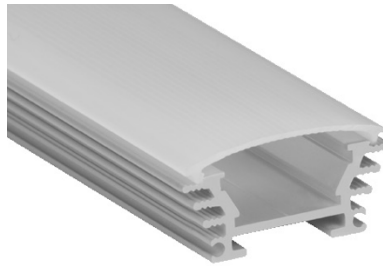
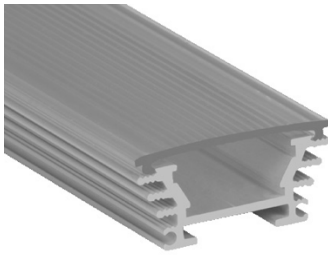
Clear Stripped Diffuser
D11



Frosted Stripped Diffuser
D12



Frosted Slim Diffuser
D01



End Caps

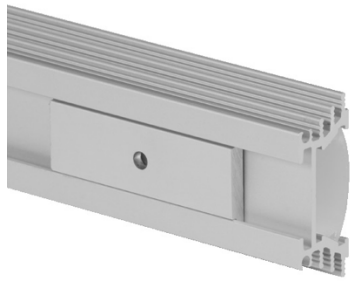


E37
Plastic End Cap
(Black or Grey)

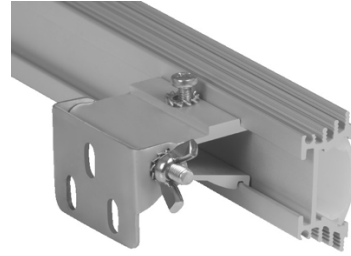


E36
Plastic End Cap for Slim Diffusers
(Black)

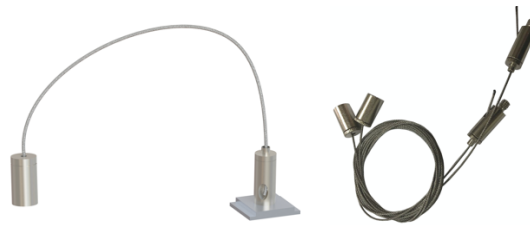
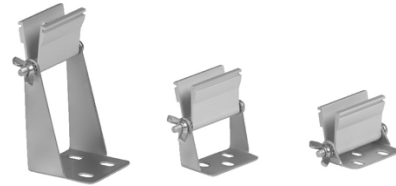
Mounting



478ASL-BRC
Flat Surface Mounting Bracket



AMB-L /// AMB-M /// AMB-S
Adjustable Mounting Brackets



PK01
Pendant / Suspension Kit
Kit includes 2 steel wires (5ft) and connection parts.

