



## INSTALLATION GUIDE: AWE B9 SQ5 COLD FRONT INTERCOOLER

For up-to-date fitment information, please visit the product page on [AWE-Tuning.com](http://www.AWE-Tuning.com).

THIS GUIDE IS INTENDED FOR THE FOLLOWING PART NUMBERS:

4510-11062 AWE ColdFront Intercooler for Audi B9 SQ5 3.0T

Welcome to the AWE family, and congratulations on your purchase of the **AWE Front Mounted Intercooler** for the **Audi B9 SQ5 3.0T**. For up to the minute fitment information, be sure to visit the Audi B9 SQ5 section of [www.AWE-Tuning.com](http://www.AWE-Tuning.com).

As always, AWE Performance Specialists are standing by for any questions, [right here](#).

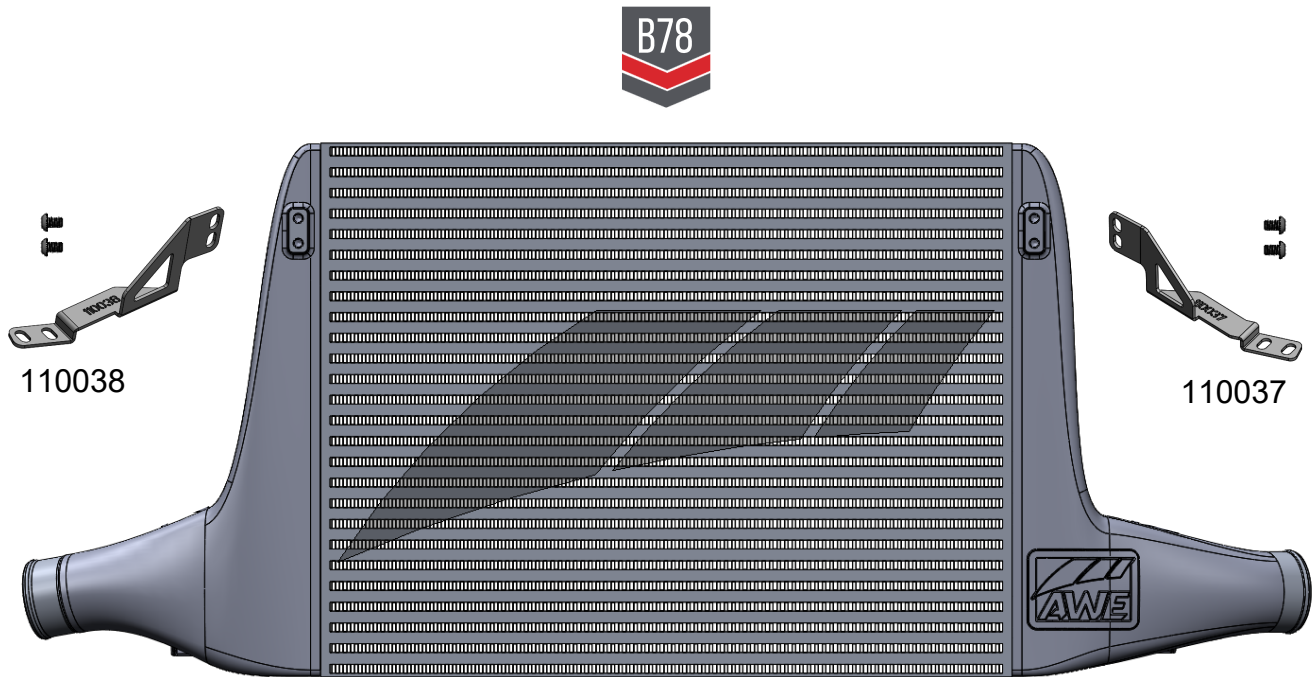
Let's go!

# PARTS LIST



INSPECT ALL PARTS PRIOR TO DISASSEMBLY OF VEHICLE; IF DAMAGED OR MISSING, PLEASE CONTACT THE PLACE OF PURCHASE IMMEDIATELY.

QTY	Description	Part Number
1	B9 ColdFront intercooler	B78
1	B9 SQ5 intercooler driver side bracket	110037
1	B9 intercooler passenger side bracket	110038
4	M8-1.25 x 10 mm screws	94500A321





Refer to the manufacturer service manual for torque specifications on all OEM fasteners.

## STEP 1

Begin by removing the front shroud by depressing the button on the back of the hood latch and pulling up. Once the latch has been removed, detach the pull up on the shroud which is held on by friction tabs.



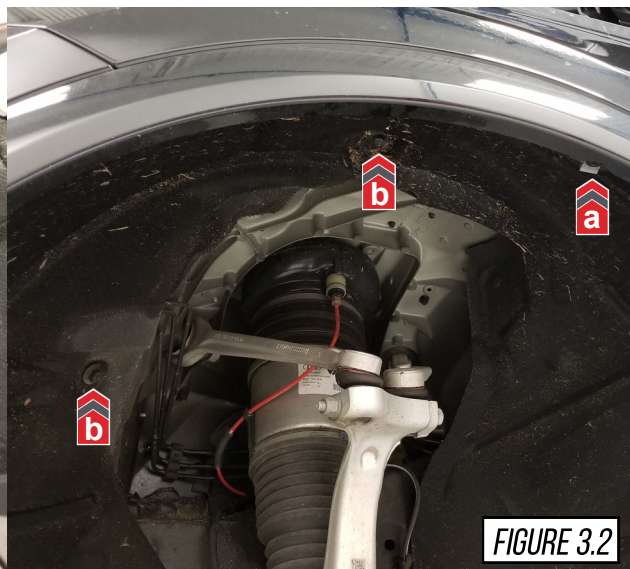
## STEP 2

Remove the two screws shown in **Figure 2** holding the front bumper cover to the vehicle.



## STEP 3

Remove both of the front wheels to gain access to the wheel well. Remove the six Torx fasteners **(a)** and three hex fasteners **(b)** shown in **Figure 3.1** and **Figure 3.2**.





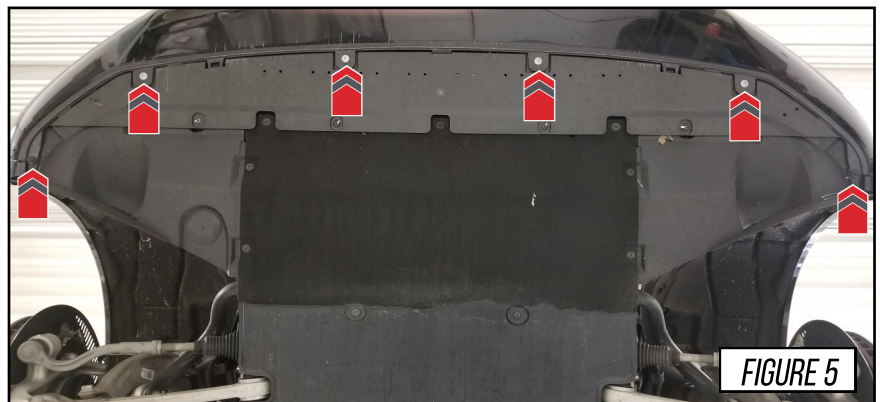
## STEP 4

Pull back the fender liner in order to access the plastic clip (a) and torx screw (b) displayed in **Figure 4**.



## STEP 5

Moving to the underside of the vehicle, remove the six torx fasteners shown in **Figure 5** to release the front bumper cover from the underbody panel.



## STEP 6

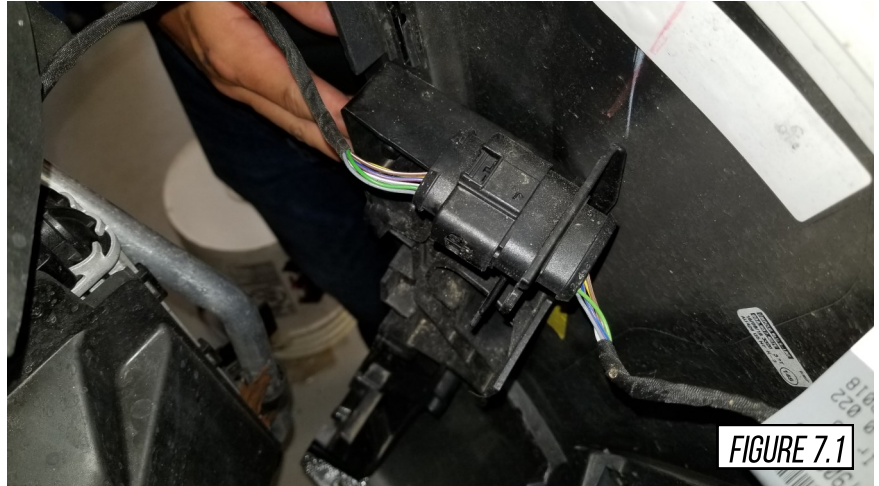
Partially remove the front of the fender trim as shown in **Figure 6**. Some of the clips are easiest removed from the inside of the fender. Do this for both sides of the vehicle.

**NOTE:** Using painters tape can help protect your paint from scratches or damage.



## STEP 7

Before the front bumper cover can be removed, unplug the wiring located inside the driver side of the bumper cover, then fully remove the bumper cover.



Finish detaching the tabs holding the bumper cover in place by pulling straight out, away from the vehicle.



## STEP 8

With the bumper cover removed, locate and remove the additional accessories mounted on the crash bar shown by the arrows in **Figure 8.1** and tuck them out of the way.

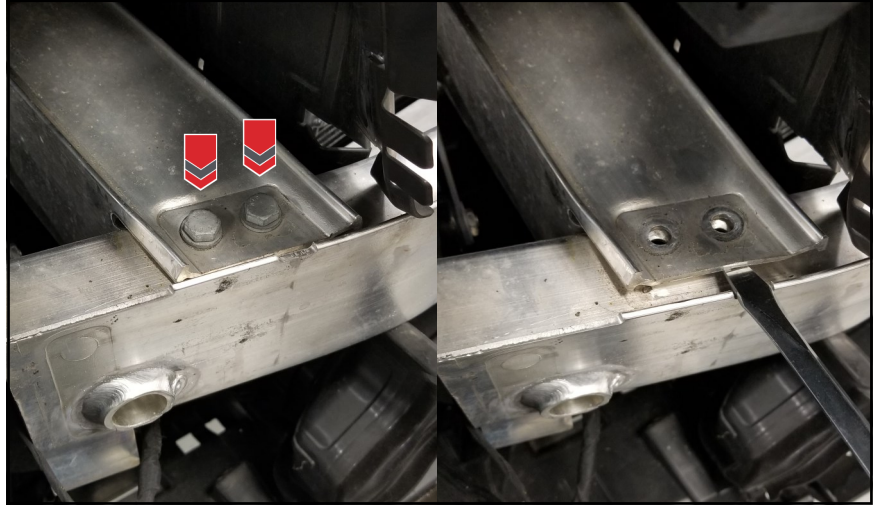




## STEP 9

Remove all four crash bar bolts (two on each side) as shown in **Figure 9** and set these aside to be reused.

Lift up the lip of the perpendicular support to free the crash bar from the vehicle.

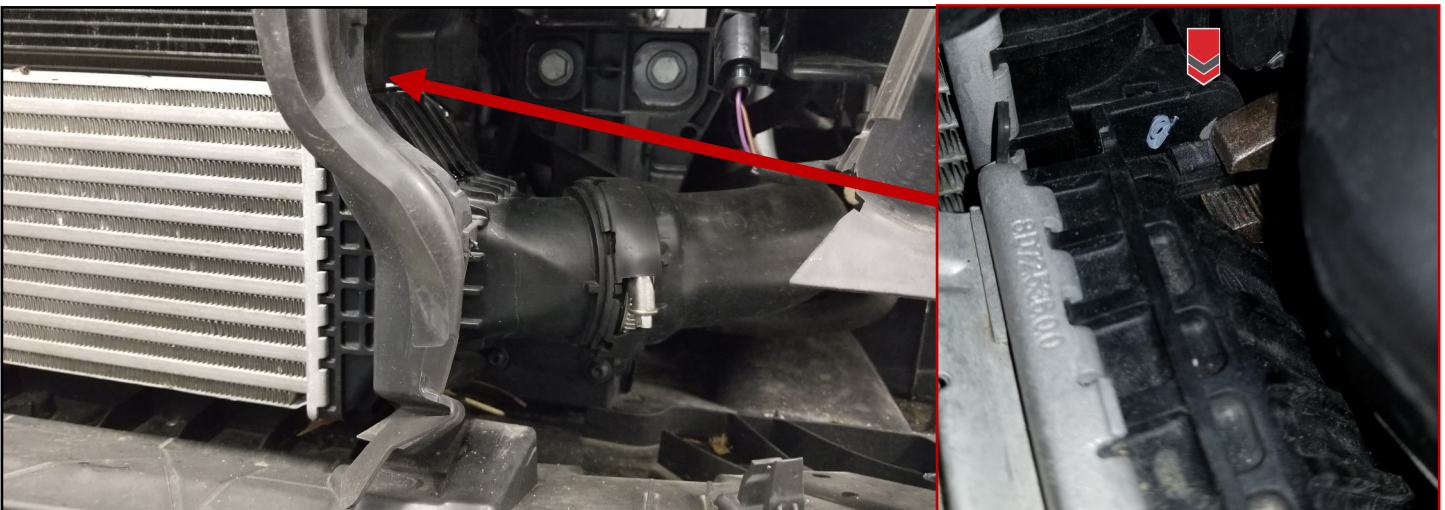
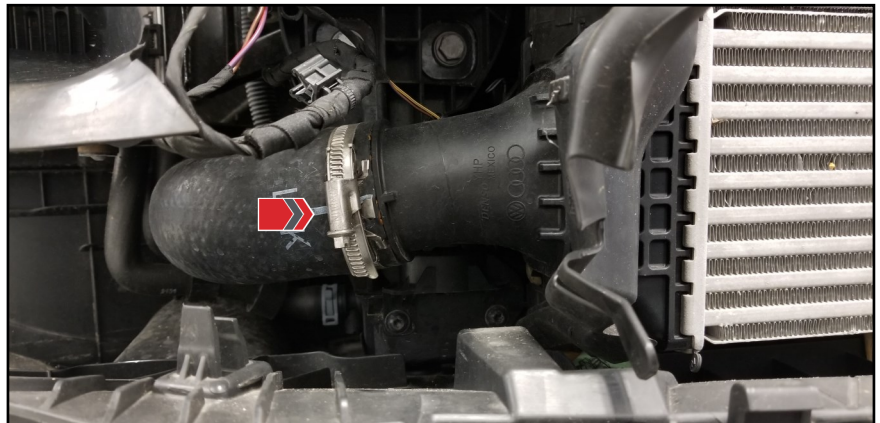


## STEP 10

Next, remove the OEM intercooler by loosening the hose clamps on either side shown in **Figures 10.1** and **10.2**.

These hose clamps will also be reused during installation.

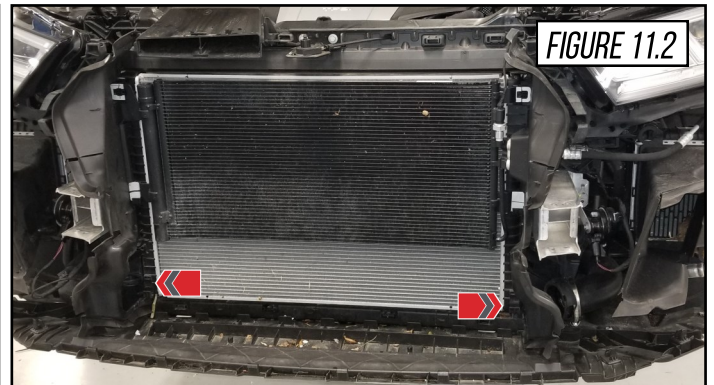
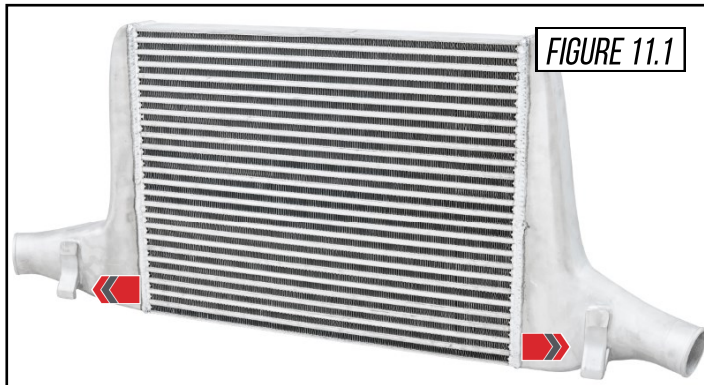
Plastic tabs shown in **Figure 10.2** need to be removed and the factory can be removed.



## STEP 11

Set your AWE ColdFront Intercooler so that the tabs on the bottom rear of the intercooler (shown in **Figure 11.1**) latch onto the factory hooks.

These tabs will attach at the same points as the OEM intercooler as identified in **Figure 11.2**.



## STEP 11

Loosely install the factory inlet and outlet tubes to keep the intercooler mounted in place.



## STEP 12

Return the crash bar to its original location and mount the driver side bracket (110037) and the passenger side bracket (110038) shown in **Figure 12.1** into their corresponding locations.

**NOTE:** Before fully tightening down the bolts, use the slotted holes to adjust the brackets for the perfect fit.

The plastic retainer shown by the red arrow in **Figure 12** should be moved out of the way or can be modified with a razor





## STEP 13

Use the supplied M8 cap button head bolts to attach the intercooler to the mounting brackets **(a)**.

**NOTE:** Again, before fully tightening down the bolts, use the slotted holes to adjust the brackets for the perfect fit. We recommend leaving about 1/2" between the back of the crash bar and the front of the intercooler.

Tighten the inlet and outlet hose clamps **(b)**.



## STEP 14

Reinstall the body panels working backwards from **STEP 8** to complete the installation.



ENJOY!





## TROUBLESHOOTING

Issue	Solution
Part is not fitting correctly	Make sure that the plastic front retainer has been trimmed and the intercooler is mounted to the correct locations. <b>Note:</b> This part was designed to work on vehicles without any additional modifications to the front end. We can not verify any fitments with other aftermarket products.
Wrong or missing parts	Double check the parts list for your system and compare them with what you received. Fill out our contact form, found below and let us know what parts you need.

## CARE

Your intercooler system requires no maintenance other than periodic cleaning of the exterior fins to ensure optimum cooling capacity.

Any questions or comments,  
please do not hesitate to contact us:

**AWE**

215-658-1670

[CONTACT FORM](#)

## WARRANTY

Up-to-date warranty information is found [HERE](#).