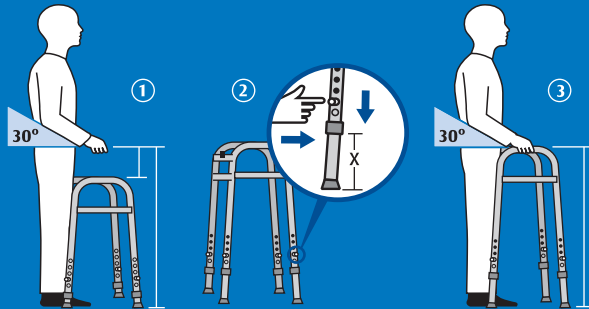


walk with confidence

how to ensure the perfect fit

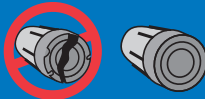
HOW TO DETERMINE PROPER HEIGHT ADJUSTMENT

1. Extend arm forward with 30 degree bend at elbow. Measure from handgrip to the floor to determine walker height.
2. Adjust leg pin positions to match required height adjustment.



TIP REPLACEMENT

Check tips periodically and replace if worn



wheel replacements and baskets

Visit www.carex.com to view our wide variety of replacement wheels and accessories.

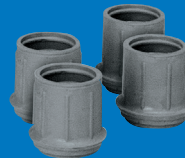
A837, A839, A834, A832, A833, A843, A844



Wire walker basket attaches quickly and easily without tools.

A825, A830

replacement tips and glides



tips: A821



glides: A831, A835, A836, A809

Folding walkers are designed to help a person remain independent and mobile by providing assistance in walking

Carex® offers several styles of folding walkers and accessories for easy mobility, maneuvering, and convenience

Medicare (U.S. Only): HCPCS Codes

E0135 Walker, Folding without Wheels

E0143 Walker, Folding with Wheels

E0148 Walker, Heavy Duty