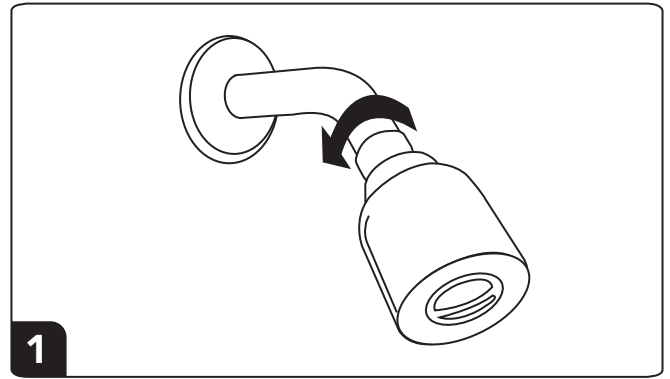


**B21500**

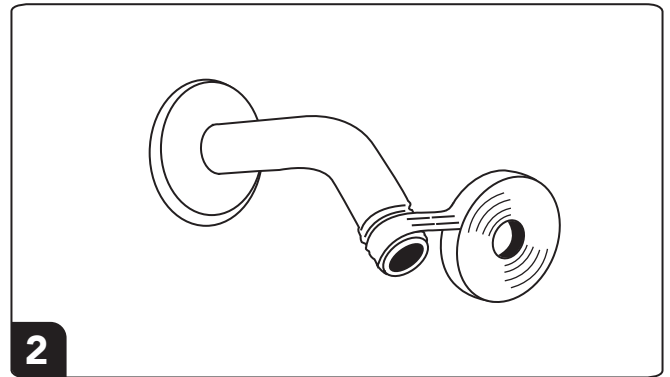


min flow rate: 5.7 L/min (1.5 gpm)  
tasa de flujo mínimo: 5.7 L/min (1.5 gpm)  
max flow rate: 6.8 L/min (1.8 gpm)  
tasa de flujo máxima: 6.8 L/min (1.8 gpm)

For use with automatic compensating valves rated at 5.7 L/min (1.5 gpm) or less  
Para usar con válvulas de compensación automática con una capacidad nominal de 5.7 L/min (1.5 gpm) o menos

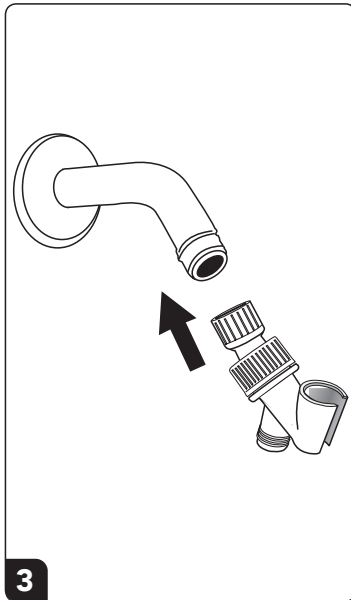


**1**

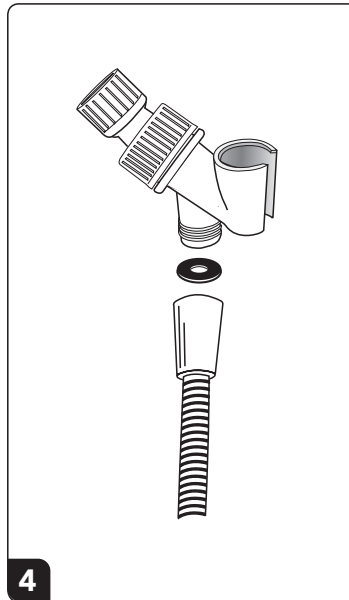


**2**

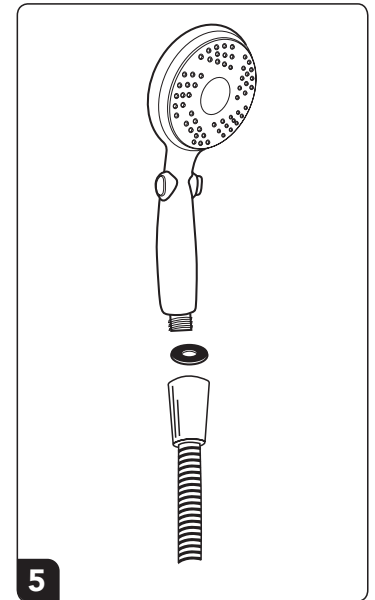
PTFE tape not included  
Cinta de PTFE no incluida



**3**



**4**



**5**

**CAUTION:** Do **NOT** apply excessive force when loosening or tightening fittings. Do **NOT** overtighten.

**WARNING:** When shower is not in use, **ALWAYS** turn off faucet.

**CUIDADO:** NO aplique una fuerza excesiva al aflojar o apretar los accesorios. NO apriete demasiado.

**ADVERTENCIA:** Cuando la ducha no esté en uso, **SIEMPRE** apague el grifo.