



696 PLUS INTERCOM USER MANUAL

1. COMMUNICATION VOLUME / VOX

VOLUME / VOX knob (1A) controls intercom volume. Knob (1B) controls voice activation (VOX) sensitivity.

2. PLAY / PAUSE

Plays or pauses music, answers or ends phone calls.

3. LED

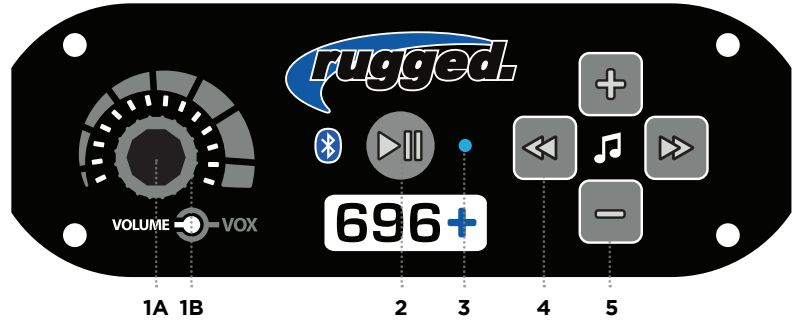
Blue indicates power is on, red indicates transmitting.

4. SKIP

Quick press ◀ or ▶ skips forward or reverse.

5. MUSIC VOLUME

Quick press + or - increases/decreases volume.



Intercom Operation

Power On / Off the intercom by rotating the volume control (1A) clockwise / counterclockwise.

VOX Adjustment

Rotate the VOX and VOLUME all the way clockwise, putting the mic in an open state. Listen for the ambient sound picked up. Slowly rotate the VOX counter-clockwise one click at a time until the ambient noise is silenced. Now set VOLUME at about 50%, position the mic **AGAINST THE LIPS**, and begin speaking normally. You should hear your own voice (Side-Tone). Adjust volume for comfort. If your voice does not open the mic, increase VOX slightly (clockwise). If the mic opens too easily, decrease VOX slightly (counter-clockwise).

NOTE: Bluetooth audio will attenuate or “dim down” when VOX activates.

PRO TIPS

- The higher the background noise level (engine, wind, etc.), the further counterclockwise you will need to adjust the VOX control.
- Be sure to have all helmet / headset microphones positioned so they are touching the lips. This ensures proper microphone activation and promotes noise canceling.
- If the music is always quiet, adjust the VOX control on the intercom until the mic turns off and music volume increases.
- Only driver can speak on cell phone call.

Bluetooth Pairing for Music and Cell

- Start with the intercom powered off and the bluetooth function of your phone or device powered off.
- Turn on the intercom.
- Turn on the phone or device's bluetooth and begin scanning (scanning is automatic on most phones).
- Wait for "RUGGED696+" to be displayed on the list of found devices.
- Select "RUGGED696+" and wait for the device to pair. If pairing is not successful, restart the process.

2-Way Radio Use

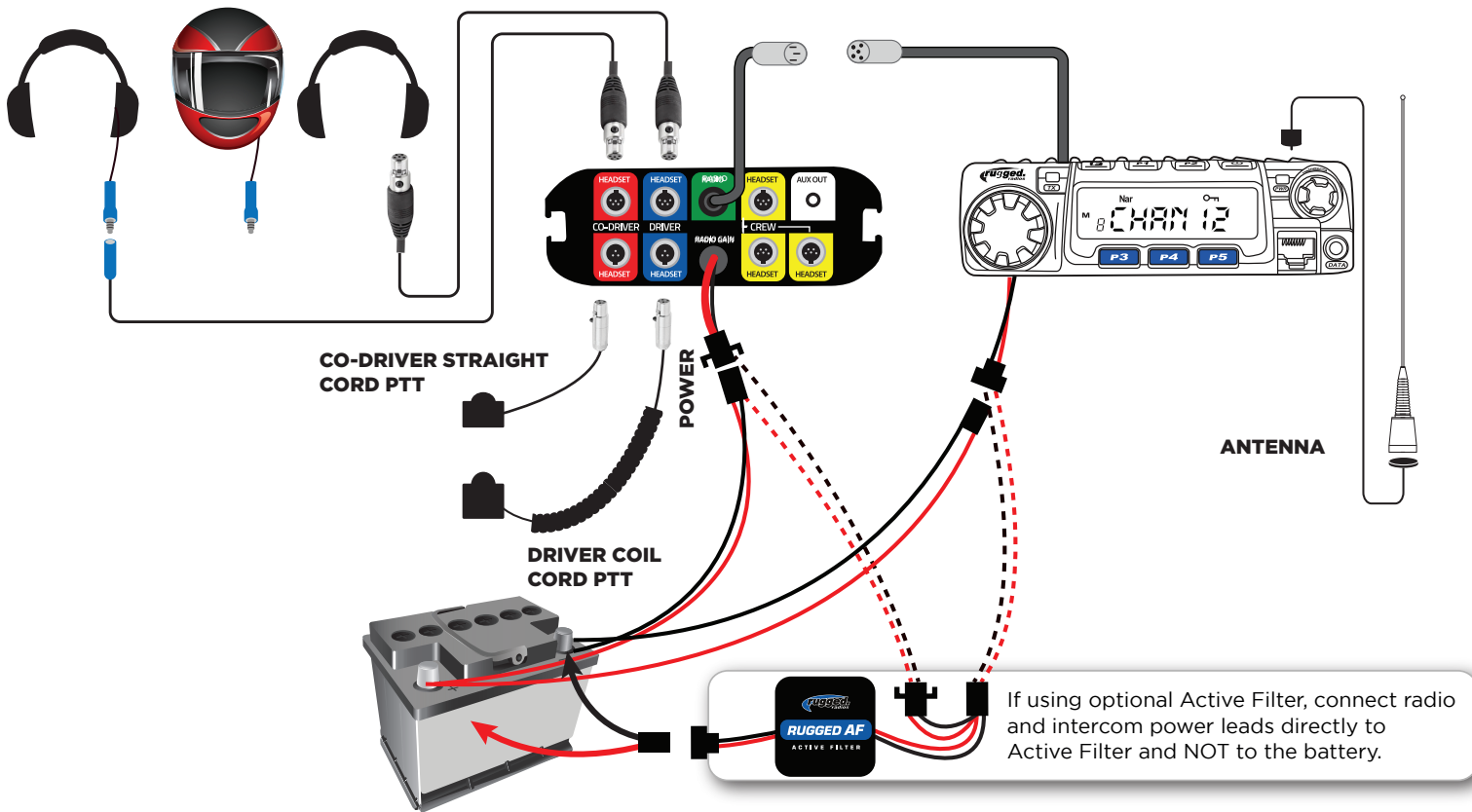
Received audio is controlled by your radio's volume control, not the intercom volume control. Push-To-Talk (PTT) Buttons are only used for transmitting over a 2-way radio connected to your intercom. To transmit, press and hold the PTT button, speak, then release when finished.

PRO TIPS

- PTT buttons only activate one mic (ie: Driver PTT activates Driver mic). If receiving radios do not hear your voice but hear a “click” indicating your radio is transmitting, verify your PTT and headset cables are in the correct ports.
- When transmitting the LED on both the intercom and radio will illuminate red.
- **The radio's hand mic is incompatible with intercom systems. We do recommend storing it in the vehicle in case of emergency (in which case, power off the intercom).**

AUX Out for Recording or Connection to Sound System

The rear AUX OUT port allows you to output intercom audio (including music) to a sound system or audio/video recording device using a three-conductor (TRS) 3.5mm aux cable.



**This is a universal wiring diagram. Your exact configuration might vary depending on the system purchased.



HEADSETS connects driver and co-driver headsets to intercom. Route away from power and antenna cables.



RADIO connects to optional Radio.



PUSH-TO-TALK connects driver and co-driver PTT to intercom.



AUX OUT audio output for sound systems for recording devices.



CREW connects additional headsets to intercom.



POWER connect +/- directly to 12v battery.

Radio & Intercom Mounting

- Both the intercom and radio come with universal mounting brackets. Vehicle specific mounting options are sold separately.
- DO NOT mount the radio or intercom near an ignition box to avoid RF interference.
- Route antenna cable away from power leads and headset cables.

Connect Power

- Route all power cables directly to the battery, away from other power/headset cables.
- DO NOT connect inline with other components. If power is tied to ignition, lights or other power sources, a ground loop problem may occur, causing noise in the system.
- DO NOT remove any fuses that are in line with factory cables or otherwise modify power cables.