



# 696 PLUS INTERCOM USER MANUAL

## 1. COMMUNICATION VOLUME / VOX

VOLUME / VOX knob (1A) controls intercom volume.  
Knob (1B) controls voice activation (VOX) sensitivity.

## 2. PLAY / PAUSE

Plays or pauses music, answers or ends phone calls.

## 3. LED

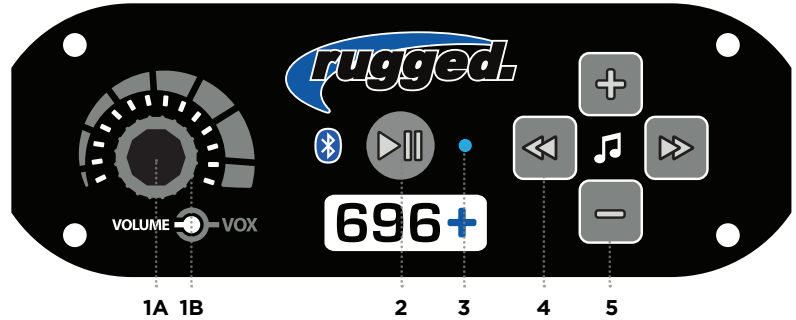
Blue indicates power is on, red indicates transmitting.

## 4. SKIP

Quick press ◀ or ▶ skips forward or reverse.

## 5. MUSIC VOLUME

Quick press + or - increases/decreases volume.



## Intercom Operation

Power On / Off the intercom by rotating the volume control (1A) clockwise / counterclockwise.

## VOX Adjustment

Rotate the VOX and VOLUME all the way clockwise, putting the mic in an open state. Listen for the ambient sound picked up. Slowly rotate the VOX counter-clockwise one click at a time until the ambient noise is silenced. Now set VOLUME at about 50%, position the mic **AGAINST THE LIPS**, and begin speaking normally. You should hear your own voice (Side-Tone). Adjust volume for comfort. If your voice does not open the mic, increase VOX slightly (clockwise). If the mic opens too easily, decrease VOX slightly (counter-clockwise).

**NOTE:** Bluetooth audio will attenuate or “dim down” when VOX activates.

### PRO TIPS

- The higher the background noise level (engine, wind, etc.), the further counterclockwise you will need to adjust the VOX control.
- Be sure to have all helmet / headset microphones positioned so they are touching the lips. This ensures proper microphone activation and promotes noise canceling.
- If the music is always quiet, adjust the VOX control on the intercom until the mic turns off and music volume increases.
- Only driver can speak on cell phone call.

## Bluetooth Pairing for Music and Cell

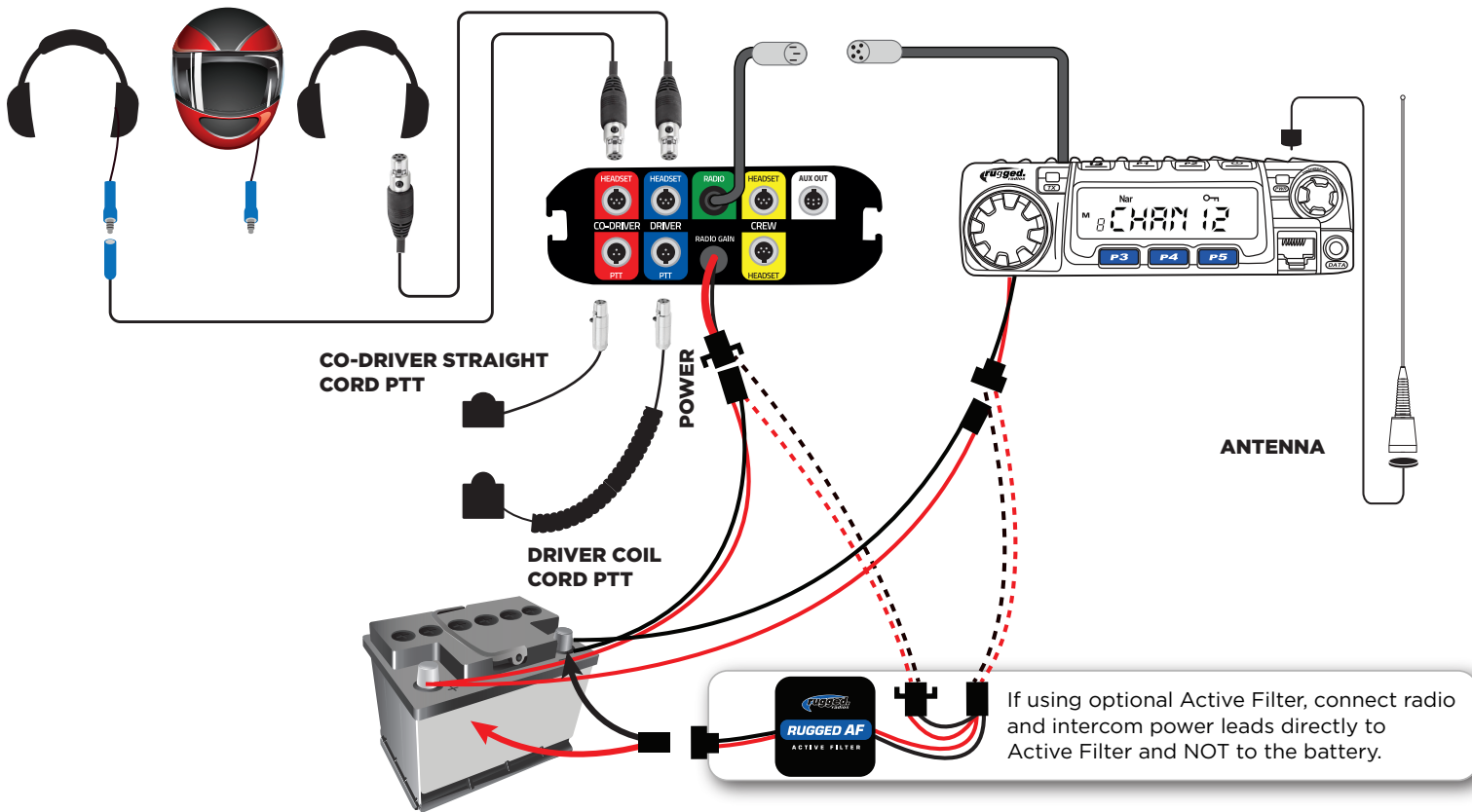
- Start with the intercom powered off and the bluetooth function of your phone or device powered off.
- Turn on the intercom.
- Turn on the phone or device's bluetooth and begin scanning (scanning is automatic on most phones).
- Wait for "RUGGED696+" to be displayed on the list of found devices.
- Select "RUGGED696+" and wait for the device to pair. If pairing is not successful, restart the process.

## 2-Way Radio Use

Received audio is controlled by your radio's volume control, not the intercom volume control. Push-To-Talk (PTT) Buttons are only used for transmitting over a 2-way radio connected to your intercom. To transmit, press and hold the PTT button, speak, then release when finished.

### PRO TIPS

- PTT buttons only activate one mic (ie: Driver PTT activates Driver mic). If receiving radios do not hear your voice but hear a “click” indicating your radio is transmitting, verify your PTT and headset cables are in the correct ports.
- When transmitting the LED on both the intercom and radio will illuminate red.
- **The radio's hand mic is incompatible with intercom systems. We do recommend storing it in the vehicle in case of emergency (in which case, power off the intercom).**



\*\*This is a universal wiring diagram. Your exact configuration might vary depending on the system purchased.



**HEADSETS** connects driver and co-driver headsets to intercom. Route away from power and antenna cables.



**RADIO** connects to optional Radio.



**PUSH-TO-TALK** connects driver and co-driver PTT to intercom.



**AUX OUT** audio output for sound systems for recording devices.



**CREW** connects additional headsets to intercom.



**POWER** connect +/- directly to 12v battery.

## Radio & Intercom Mounting

- Both the intercom and radio come with universal mounting brackets. Vehicle specific mounting options are sold separately.
- DO NOT mount the radio or intercom near an ignition box to avoid RF interference.
- Route antenna cable away from power leads and headset cables.

## Connect Power

- Route all power cables directly to the battery, away from other power/headset cables.
- DO NOT connect inline with other components. If power is tied to ignition, lights or other power sources, a ground loop problem may occur, causing noise in the system.
- DO NOT remove any fuses that are in line with factory cables or otherwise modify power cables.