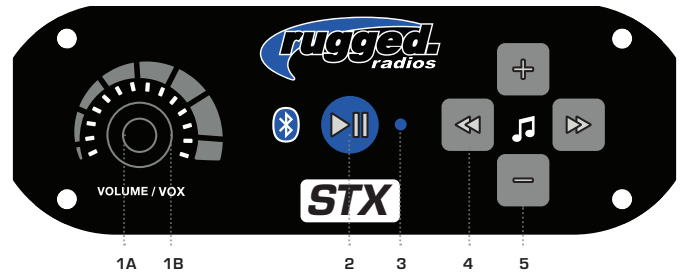




STX QUICK START GUIDE

1. **COMMUNICATION VOLUME/VOX** : knob (1A) controls intercom volume. Knob (1B) controls voice activation (VOX) sensitivity.
2. **PLAY / PAUSE**: plays or pauses music, answers or ends phone calls.
3. **LED**: blue indicates power is on, red indicates transmitting.
4. **SKIP**: Quick Press ◀ or ▶ skips forward or reverse
5. **MUSIC VOLUME**: Quick press + or = increases/decreases volume.



Intercom Operation

Power On / Off the intercom by rotating the volume control (1A) clockwise / counterclockwise.

VOX Adjustment

Rotate the VOX control all the way clockwise, putting the mic in an open state. Listen for the ambient sound picked up. Slowly rotate the VOX counter-clockwise one click at a time until the ambient noise is silenced. Now set VOLUME at about 50%, position the mic AGAINST THE LIPS, and begin speaking normally. You should here your own voice (Side-Tone). Adjust volume for comfort. If your voice does not open the mic, increase VOX slightly (clockwise). If the mic opens too easily, decrease VOX slightly (counter-clockwise).

NOTE: Bluetooth audio will attenuate or “dim down” when VOX activates.

Pro Tips:

- The higher the background noise level (engine, wind, etc.), the further counterclockwise you will need to adjust the VOX control.
- Be sure to have all helmet / headset microphones positioned so they are touching the lips. This ensures proper microphone activation and promotes noise canceling.
- If the music is always quiet, adjust the VOX control on the intercom until the mic turns off and music volume increases.

Bluetooth Pairing for Music and Cell

- Start with the intercom powered off and the bluetooth function of your phone or device powered off.
- Turn on the intercom.
- Turn on the phone or device's bluetooth and begin scanning (scanning is automatic on most phones)
- Wait for “STX” to be displayed on the list of found devices.
- Select “STX” and wait for the device to pair to the intercom. If pairing is not successful, restart the process.

2-Way Radio Use

Received audio is controlled by your radio's volume control, not the intercom volume control.

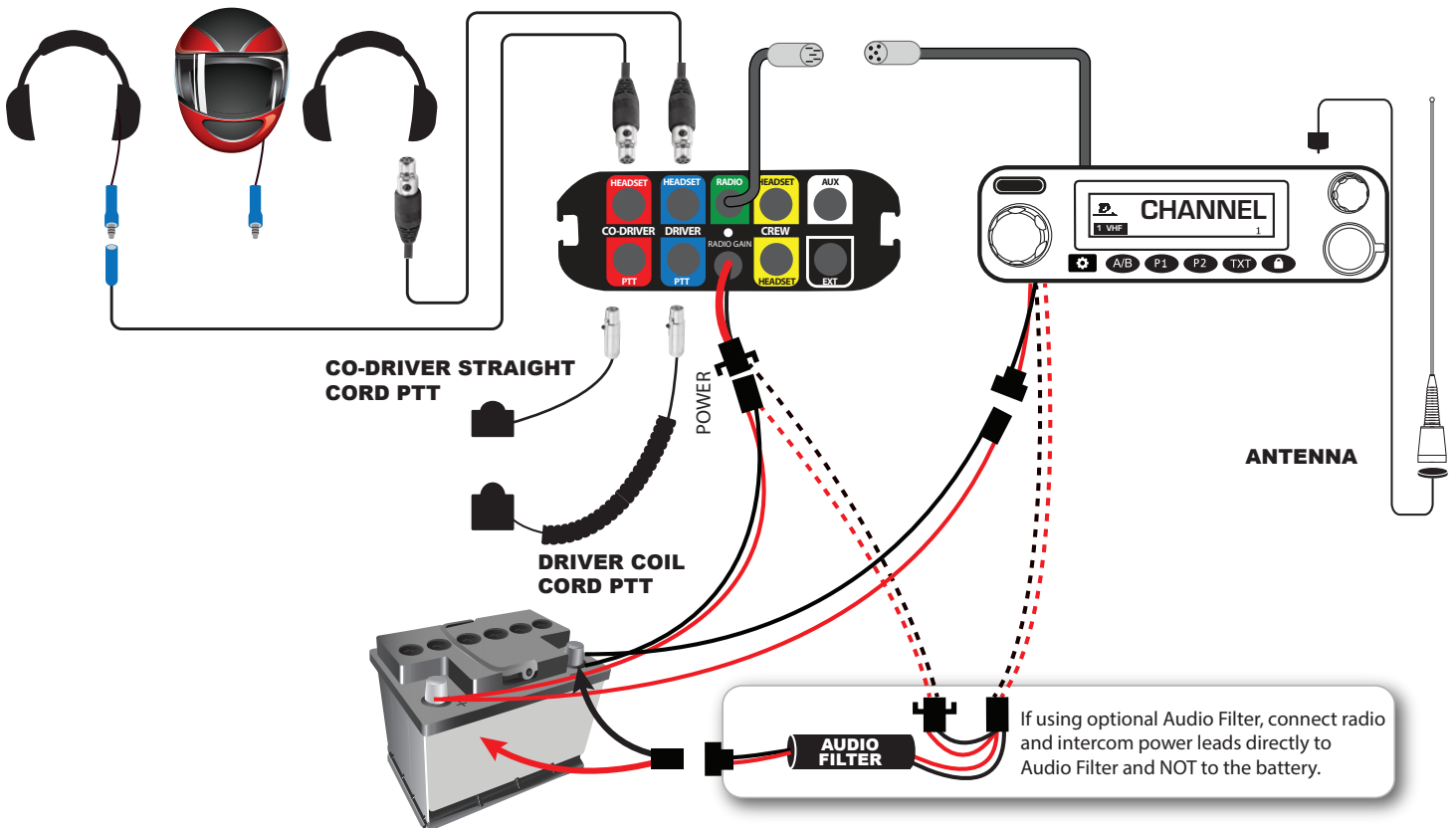
Push-To-Talk (PTT) Buttons are only used for transmitting over a 2-way radio connected to your intercom. To transmit, press and hold the PTT button, speak, and release when finished.

Pro Tips:

- PTT buttons only activate one mic (ie: Driver PTT activates Driver mic). If receiving radios do not hear your voice but hear a "click" indicating your radio is transmitting, verify your PTT and headset cables are in the correct ports.
- When transmitting the LED on both the intercom and radio will illuminate red.
- The radio's hand mic is incompatible with intercom systems. We do not recommend storing it in the vehicle in case of emergency (in which case, power off the intercom)

AUX Out for Recording or Connection to Sound System

The rear AUX OUT port allows you to output intercom audio (including music) to a sound system or audio/video recording device using a three-conductor (TRS) 3.5mm aux cable.



**This is a universal wiring diagram. Your exact configuration might vary depending on the system purchased.

HEADSET connects driver and co-driver headsets to intercom. Route away from power and antenna cables.

PUSH-TO-TALK connects driver and co-driver PTT to intercom.

CREW connects additional headsets to intercom.

RADIO connects to optional Radio.

AUX allows connectivity to cell phones, audio recorders and other devices with optional cables.

EXT optional modules available to connect up to 8 headsets.

Power connect +/- directly to 12v battery.

Radio & Intercom Mounting

- Both the intercom and radio come with universal mounting brackets. Vehicle specific mounting options are sold separately.
- DO NOT mount the radio or intercom near an ignition box to avoid RF interference.
- Route antenna cable away from power leads.

Connect Power

- Route all power cables directly to the battery.
- DO NOT connect inline with other components. If power is tied to ignition, lights or other power sources, a ground loop problem may occur, causing noise in the system.
- DO NOT remove any fuses that are in line with factory cables or otherwise modify power cables.