

- 1. DRIVER VOLUME** Controls driver volume
- 2. DRIVER ISOLATE** Controls Driver Isolate function
- 3. POWER/TX** Blue indicates power is on. Red indicates transmitting
- 4. SIDE TONE** Controls Side Tone function
- 5. CO-DRIVER VOLUME** Controls co-driver volume

INTERCOM OPERATION

Power On/Off

Turn the Co-Driver Volume pot clockwise. You should feel a click and the intercom's LED in the center should illuminate Blue.

Volume Control

Volume control is independently controlled for Driver and Co-Driver.

The left knob controls Driver listening volume and the right knob controls Co-Driver's listening volume.

Sidetone Switch

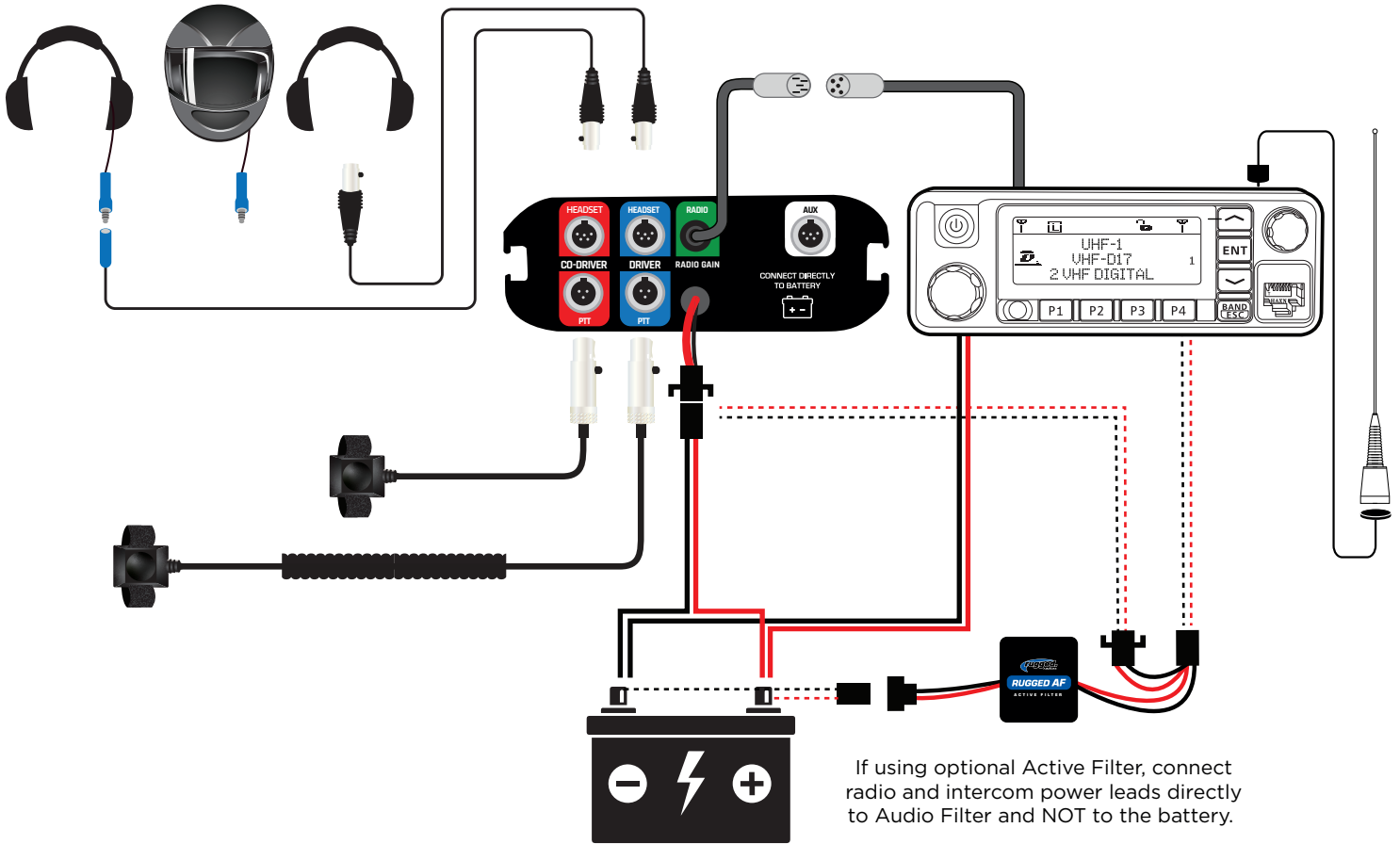
This function allows the users to hear themselves in their own helmets or headsets. This helps users modulate their actual speaking volume to prevent unnecessary yelling into the mic. Switch position up to activate and down to turn off.

Driver Isolate Switch

In the on position, all radio traffic is heard by co-driver only so the driver can concentrate on driving. Both Driver and Co-Driver can transmit while this function is on.

PTT Function

Each PTT activates only one headset mic at a time. Driver PTT will activate the mic in the Driver headset port and will not activate the Co-Driver headset port mic. The Co-Driver PTT activates only the Co-Driver headset port mic. If during transmission you aren't transmitting your voice at all or it is extremely quiet make sure you didn't accidentally plug into the wrong headset port or plug in your PTT buttons in the wrong position.



If using optional Active Filter, connect radio and intercom power leads directly to Audio Filter and NOT to the battery.

This is a universal wiring diagram. Your exact configuration might vary depending on the system purchased.

HEADSETS connects driver headset or helmets to intercom. Route away from power and antenna cables.

PTT connects Push to Talk buttons for use with 2-way radio. Pay attention to route driver and co-driver PTT to their corresponding seat position.

RADIO connects to optional radio.

AUX allows in/out connectivity to cell phones, audio recorders, GoPro, and other devices with optional cables.

POWER connect +/- directly to 12v battery.

Connect Power

- Route all power cables directly to the battery.
- DO NOT connect inline with other components. If power is tied to ignition, lights or other power sources, a ground loop problem may occur, causing noise in the system.
- DO NOT remove any fuses that are in line with factory cables or otherwise modify power cables.

Radio & Intercom Mounting

- Both the intercom and radio come with universal mounting brackets. Vehicle specific mounting options are sold separately.
- DO NOT mount the radio or intercom near an ignition box to avoid RF interference.
- Route antenna cable away from power leads.