

**RUGGED** RADIOS

**JEEP JL  
RADIO KIT  
INSTALLATION INSTRUCTIONS**

## For additional information



Scan to view installation video



View instructions online  
[ruggedradios.com/instructions](http://ruggedradios.com/instructions)



Call our Tech Department  
(888) 541-7223

# What's Included?

## MOBILE RADIO



(P.N. GMR45)

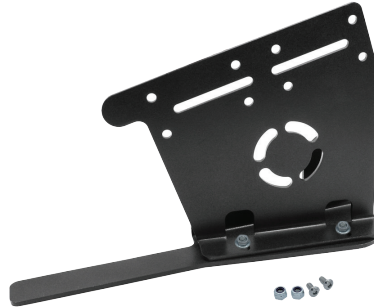
OR



(P.N. GMR25)

## RADIO MOUNT (P.N. MT-RM-JL)

- (1) Radio Mount
- (2) Mounting Bolts
- (2) Carriage Bolts
- (4) Nuts



### COMPATIBILITY:

**WRANGLER**  
JL, JLU (2018-CURRENT)

**GLADIATOR**  
JT (2020-CURRENT)

## ANTENNA MOUNT (P.N. MT-ANT-JEEP-DS)



### COMPATIBILITY:

**WRANGLER**  
JL, JLU (2018-CURRENT)

**GLADIATOR**  
JT (2020-CURRENT)

## POWER AND ANTENNA CABLE HARNESS (P.N. PHC-JL-JT)



The power and antenna cable harness is engineered for the Jeep JL and JT, allowing for a hassle-free installation. Featuring a custom fit grommet that allows simple passage through the firewall and cables sized for this application.

## TUNED ANTENNA (P.N. POINT5)



The precision tuned antenna maximizes your GMRS radio by delivering the best signal performance throughout the GMRS frequencies.

# Installation

## TOOLS NEEDED

10mm Socket Wrench  
 10mm Open End Wrench  
 1/8" Allen wrench  
 3/8" Socket Wrench or Open End Wrench

T-40 Torx Socket Wrench or Wrench  
 Pliers  
 Small Prying Tool or Flat Screwdriver  
 Small Crescent Wrench

## STEP 1: INSTALL RADIO MOUNT AND RADIO

**Radio Mount:** On the passenger side center console, locate the circular bolt cover on the plastic center console trim. With a **Small Prying Tool or Flat Screwdriver**, remove the circular bolt cover on the center console trim. Using a **10mm Socket Wrench** remove the bolt beneath the bolt cover. **SEE FIGURE A.**

Slide the long L-shaped bracket under the plastic center console trim and line up the hole on the bracket with the hole from the removed bolt. Ensure the long leg of the bracket goes in between the carpet and the seat track. **SEE FIGURE B.** This will help stabilize the radio mount. Once your bracket is in the correct position, reinstall the bolt into the center console. Reinstall the bolt cover into the plastic center console trim.

Locate the U-bracket packaged with your radio and attach it to the wide, flat part of your Jeep radio mount using the included mounting bolts and nuts. **Use a 1/8" Allen Wrench and 3/8" Socket Wrench or Open End Wrench.**

Position the radio in the U-bracket, then insert and tighten the supplied hex/Phillips screws into the side of the radio using a **7mm Socket Wrench or Phillips Screwdriver.**

Using a **10mm Open End Wrench** attach the radio mounting plate to the long L-shaped bracket with the two included carriage bolts.

FIGURE A



FIGURE B



FIGURE C



# Installation

## STEP 2: INSTALL ANTENNA MOUNT

**Antenna Mount:** On the driver side cowl in between the hood and the driver side door, remove the forwardmost bolt using a **T-40 Torx Socket Wrench or Wrench**. Place the mounting bolt through the pill shaped hole on the antenna mount then place the protective neoprene washer on the bolt. Align the antenna mount, bolt, and washer with the hole in the cowl and reinstall the bolt. Ensure the channel on the antenna mount securely fits into the seam below. **SEE FIGURE B.**

FIGURE C



## STEP 3: RUN CABLING

Open the hood and prop it up securely. From the motor compartment on the driver's side locate the plastic circular plug on the firewall beside the master cylinder, below the hood hinge. Remove the plastic plug using a pair of **Pliers**. **SEE FIGURE D.**

Run the cables into the cab until the grommet on the power harness reaches the hole in the firewall and ensure the grommet is securely seated in the hole. Run the NMO mount end of the antenna cable up towards the driver side door. Gently lift the foam hood seal allowing you to run your cable under it. The NMO mount end of the antenna cable should end up near the antenna mount.

Using a **10mm Socket or Open End Wrench** remove the two nuts holding the overflow tank to the firewall. Lift the overflow tank off of its mounting bolts to allow access to the plastic cable channel below. **SEE FIGURE E.** Use a **Small Prying Tool or Flat Screwdriver**, lift the tab holders to release the tabs holding the plastic cable channel cover in place. Run your power cable through the cable channel. The battery connector side of your power cable should end up close to the battery. **IMPORTANT:** Do not connect the battery cable to the battery yet. Push the plastic cable channel cover back into place, ensuring all the tabs click back in. Place the overflow tank back onto its mounting bolts and reinstall the two nuts.

On the driver side of the cab, unclip the carpet to reveal the passthrough hole in the center console. Run the cables through the hole from the driver's side to the passenger's side. On the passenger side of the cab, unclip the carpet to reveal the passthrough hole in the center console and pull your cables through. Attach your antenna and power cable to the back of your radio.

FIGURE D

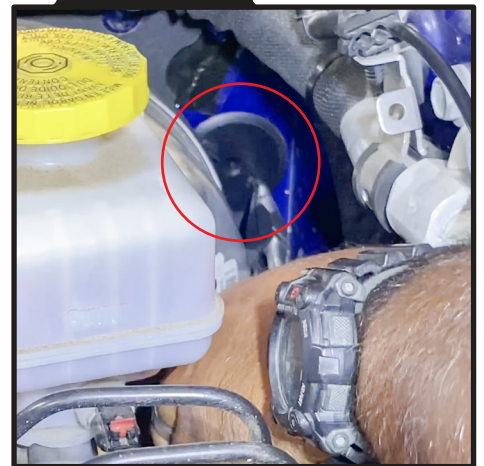
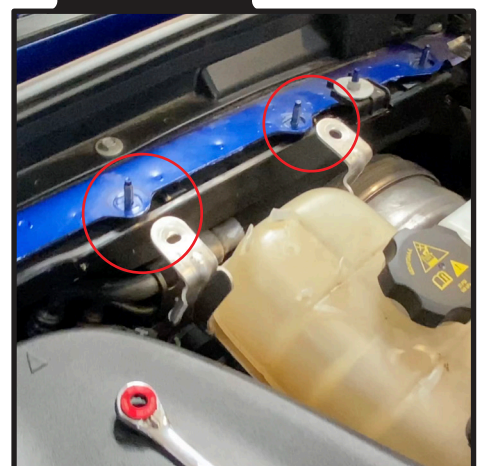


FIGURE E



# Installation

## STEP 4: INSTALL ANTENNA

**Antenna:** Unscrew the NMO nut off of the stud. Then insert the stud for the antenna NMO through the hole in the mount and reinstall the nut using a **Small Crescent Wrench**. This nut requires very little torque. Do not over-tighten! Thread antenna on to antenna mount. **SEE FIGURE E.**

**IMPORTANT:** Never transmit without an antenna as this can severely damage the radio!

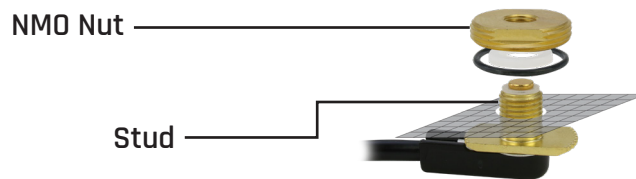


FIGURE F



## STEP 5: ATTACH POWER CABLE TO BATTERY

Using a **10mm Socket Wrench** or **Open End Wrench** attach power and ground directly to the battery. Do **NOT** ground to chassis.

**IMPORTANT:** Using a fuse box or bus bar may cause unwanted interference and decrease performance.

## STEP 6: TEST 2-WAY RADIO

### Radio Transmit Test

- Connect hand mic to radio.
- Power on radio.
- Set volume level to low.
- Select a channel to test on.
- Set another radio to the same channel.
- Press and hold the PTT on the Hand Mic. Wait one second, then begin speaking.
- When finished speaking, release the PTT. A receiving radio should have heard your call.

### Radio Receive Test

- Have someone transmit to your radio from another radio.
- You can use this incoming radio call to adjust the radio volume.

This completes your installation. If you have any questions, please contact us at (888) 541-7223.

Thank you!



DESIGNED IN ARROYO GRANDE, CA BY ENTHUSIASTS  
FOR ENTHUSIASTS. THIS PRODUCT IS BACKED BY 30  
YEARS OF EXPERIENCE WITH ONE GOAL, CONNECTING PEOPLE.

RUGGED RADIOS.

***GO FURTHER***<sup>®</sup>

**Let's get social!**

We love to share content from our Rugged family.

Tag us in your stories and posts!

#RUGGEDRADIOS

#RUGGEDRADIOSLIFESTYLE

