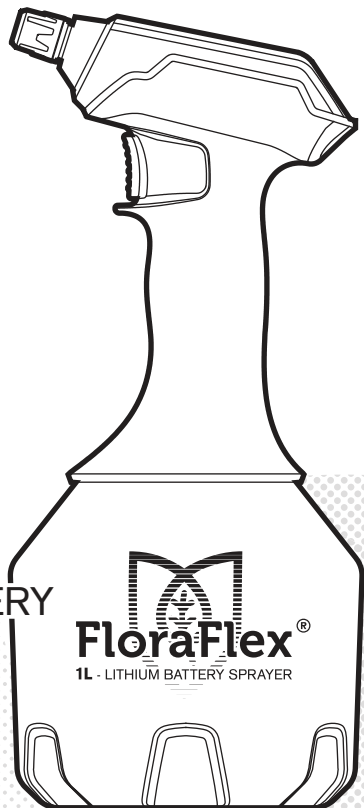




FloraFlex[®]

Helping you grow with your garden.[®]



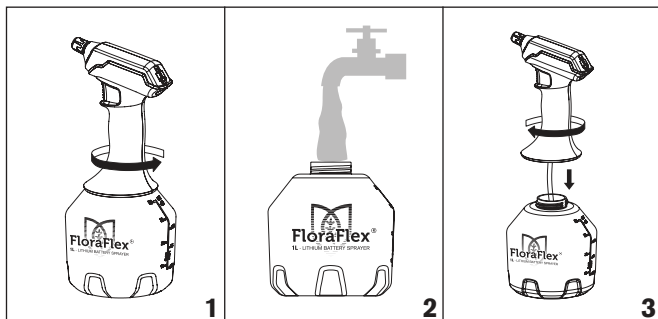
**1L - LITHIUM BATTERY
FLORA SPRAYER**

**INSTRUCTION
MANUAL**

WARNING: FOR YOUR PERSONAL SAFETY, READ INSTRUCTIONS BEFORE USING. SAVE THESE INSTRUCTIONS FOR FUTURE REFERENCE

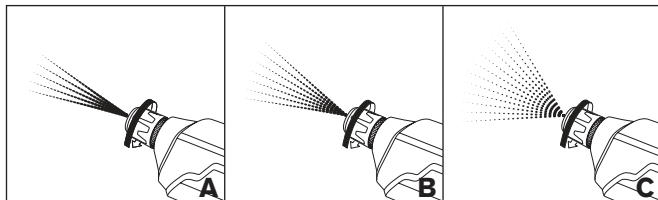
ASSEMBLY INSTRUCTIONS:

1. Remove sprayer cap. Twist counterclockwise to remove.
2. Fill the FloraSprayer reservoir with your desired noncorrosive liquid.
3. Replace sprayer cap and twist to seal (do not over-tighten).



USE INSTRUCTIONS:

1. Hold trigger down to dispense spray.
2. Rotate sprayer nozzle to the left or right to adjust flow. Flow can be adjusted continuously from a A. full stream, B. medium spray, to a C. fine mist.

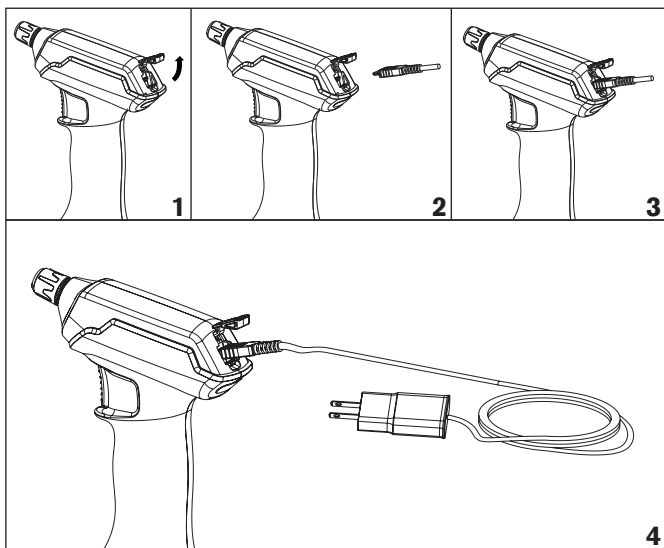


CHARGING INSTRUCTIONS:

1. Flip up charger port cover to expose Micro USB port.
2. Insert a Micro USB cable from a suitable 5V 1A charger* in the correct orientation.
3. The FloraSprayer's LED will light red to indicate the unit is charging.
4. After approximately 120 minutes the FloraSprayer's LED will shift to blue. This indicates that the unit is fully charged.**

*Charger not included.

**As the FloraSprayer's battery drains the LED will flash to indicate low power.



SAFETY INSTRUCTIONS AND CAUTIONS:

1. The FloraSprayer's lithium battery should only be charged indoors. Never charge outdoors.
2. The FloraSprayer is to be only charged using a charger suitable for a lithium battery. To avoid overcharging, which will shorten service life, remove charger from outlet when charge is complete.
3. After long periods of non-use the FloraSprayer's battery will gradually lose charge. For best results charge your FloraSprayer every six months. This will prevent the battery from becoming fully depleted, which will degrade the battery over time.
4. If the FloraSprayer is connected to power via the FloraSprayer charging port and the LED does not illuminate immediately unplug and discontinue use.
5. Store in a cool and dry environment at room temperature (15 -35 C or 60-95 F) Do not exceed 65% humidity.