

AC INFINITY

CLOUDLIFT

WALL AND FLOOR CIRCULATOR FAN

USER MANUAL

WELCOME

Thank you for choosing AC Infinity. We are committed to product quality and friendly customer service. If you have any questions or suggestions, please don't hesitate to [contact](#) us. Visit www.acinfinity.com and click contact for our contact information.

EMAIL

support@acinfinity.com

WEB

www.acinfinity.com

LOCATION

Los Angeles, CA

MANUAL CODE CL2107X1

PRODUCT

CLOUDLIFT S12
CLOUDLIFT S14
CLOUDLIFT S20
CLOUDLIFT S24

MODEL

AC-WFS12
AC-WFS14
AC-WFS20
AC-WFS24

UPC-A

819137022263
819137022430
819137022485
819137022492



Power this fan OFF before unplugging it. Do NOT place this fan near open bodies of water.

MANUAL INDEX

Manual Index	Page 5
Key Features	Page 7
Product Contents	Page 8
Installation	Page 9
Powering and Setup	Page 12
Programming	Page 14
Other AC Infinity Products	Page 15
Warranty	Page 16

KEY FEATURES

EC MOTOR

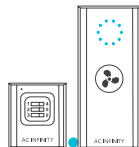
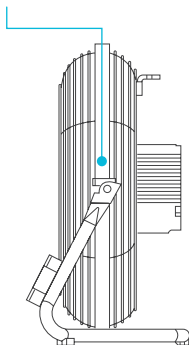
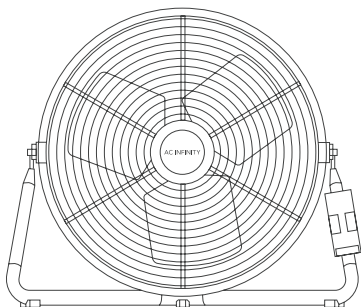
Next generation motor runs quieter, is more energy efficient, and has a longer lifespan than AC motors.

RUGGED BUILD

Black powdercoated steel fan guard supported by a rigid floor stand cages the fan blades for long-lasting performance.

WIDER COVERAGE

Pivoting fan head on the floor or wall-mounted creates dynamic circulation to direct airflow in a wide range.



IP-44 PROTECTION

This industrial wall fan is sealed to Ingress Protection 44 standards, rated with high resistance to liquids and dust.

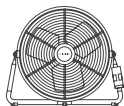
DUAL BALL BEARINGS

The motor contains ball bearings with an estimated 67,000 hour lifespan. Enables the fan to be mounted in any direction.

SPEED CONTROLLER

Single button controller with circular dot display wirelessly enables fan speed control in ten speeds.

PRODUCT CONTENTS



INDUSTRIAL
WALL FAN
(x1)



WIRELESS
CONTROLLER
(x1)



WIRELESS
RECEIVER
(x1)



AAA
BATTERIES
(x2)



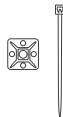
WALL-HANG
BRACKET
(x1)



WOOD SCREWS
(WALL HANG)
(x2)



WALL
ANCHOR
(x2)



WIRE
TIES
(x1)



CONTROLLER
SCREW SET
(x2)

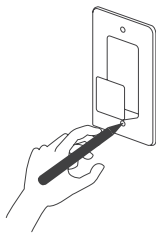
INSTALLATION

MOUNTING

STEP 1

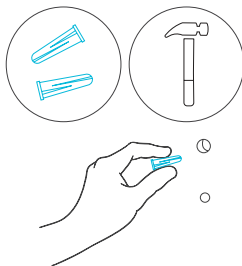
Mark the drilling holes in your chosen mounting location using the wall-hang bracket.

Make sure your chosen mounting location is structurally sound and free of obstruction.



STEP 2

Drill the two holes into your marked locations and apply the wall anchors.

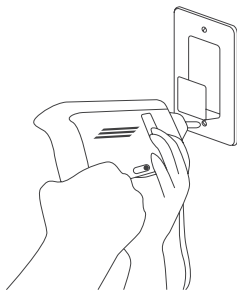


INSTALLATION

MOUNTING

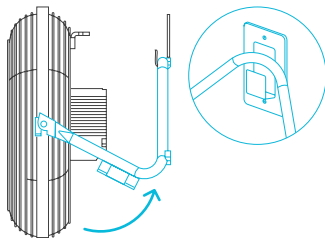
STEP 3

Replace the bracket and drill the screws into your wall to secure it.



STEP 4

Pull the stand vertically and hook the fan onto the bracket.



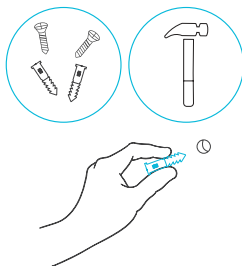
INSTALLATION

MOUNTING

STEP 5

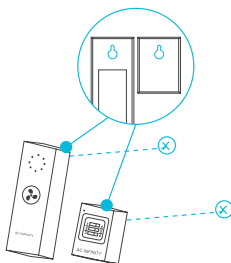
As an option you may install wall hang screws to mount your controller and receiver.

Drill holes into your marked location and apply the wall anchors.



STEP 6

Apply the screws into the wall anchors. Hang your controller and receiver by the hole located behind each module.

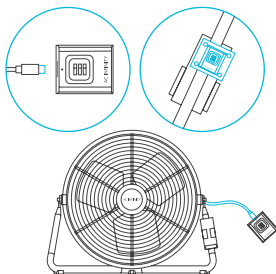


POWERING AND SETUP

STEP 1

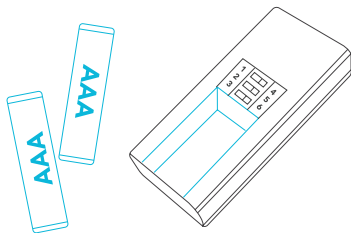
Plug the fan's UIS™ cable into the receiver.

You may magnetically mount the receiver in the controller slot.



STEP 2

Insert the two AAA batteries into the wireless controller.



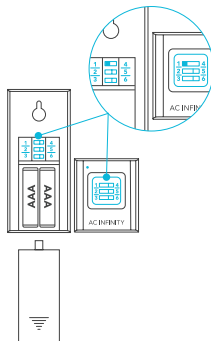
POWERING AND SETUP

STEP 3

Adjust the sliders on the controller and receiver so their numbers match. Close the battery door when you are finished. The receiver's indicator light will flash when connected.

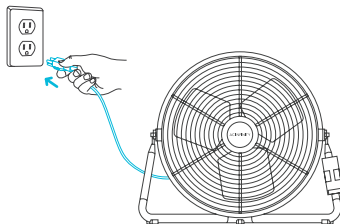
Any number of devices may be controlled using the same controller, as long as the fans' sliders match the controller's.

Any number of controllers may control the same device, as long as the controllers' sliders match the fan's.



STEP 4

Plug the fan's power cord into an AC power outlet to power the fan.



PROGRAMMING

LIGHT INDICATOR

Features ten LED lights to signify the current level. The LEDs will briefly light up before shutting off. Pressing the button will light up the LEDs.

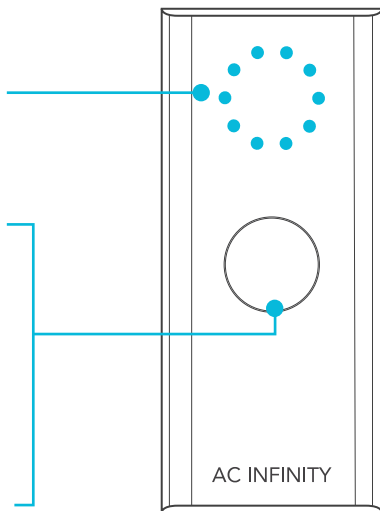
ON

Press the button will turn your device on at level 1. Continue pressing it to cycle through the ten device levels.

OFF

Hold the button to turn your device off. Press it again to return the device level back to the last setting.

Pressing the button after speed 10 will also turn your device off.



AC INFINITY PRODUCTS

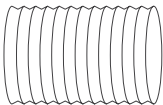
Inline Fans

The CLOUDLINE series is a line of duct fans designed to quietly ventilate AV rooms and closets, as well as various DIY air circulation and exhaust projects. Features a thermal controller with intelligent programming that will automatically adjust duct fan speeds in response to changing temperatures.



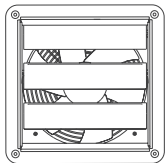
Ducting Tubes

The four-layer ducting tube is used to direct airflow, designed for ventilation systems in applications like HVAC, dryers, and grow rooms. It is highly durable and flexible, and can be used anywhere from tight spaces to wide open areas.



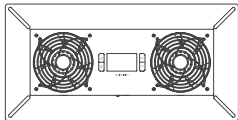
Shutter Fans

The AIRLIFT series is a line of shutter exhaust fans designed to expel heat, moisture, odor, and dust from spaces like greenhouses, garages, attics, and sheds. It features an intelligent controller that includes temperature and humidity programming, adjustable fan speed controls, a timer, and an alarm system.



Crawlspace Fans

The AIRTITAN is a line of weather-proof fans designed to provide ventilation, as well as odor and moisture control for crawl spaces and basements.



Discover the latest innovations in cooling and ventilation at acinfinity.com

WARRANTY

This warranty program is our commitment to you, the product sold by AC Infinity will be free from defects in manufacturing for a period of two years from the date of purchase. If a product is found to have a defect in material or workmanship, we will take the appropriate actions defined in this warranty to resolve any issues.

The warranty program applies to any order, purchase, receipt, or use of any products sold by AC Infinity or our authorized dealerships. The program covers products that have become defective, malfunctioned, or expressively if the product becomes unusable. The warranty program goes into effect on the date of purchase. The program will expire two years from the date of purchase. If your product becomes defective during that period, AC Infinity will replace your product with a new one or issue you a full refund.

The warranty program does not cover abuse or misuse. This includes physical damage, submersion of the product in water, incorrect installation such as wrong voltage input, and misuse for any reason other than intended purposes. AC Infinity is not responsible for consequential loss or incidental damages of any nature caused by the product. We will not warrant damage from normal wear such as scratches and dings.

To initiate a product warranty claim, please contact our customer service team at support@acinfinity.com



If you have any issues with this product, contact us and we'll happily resolve your problem or issue a full refund!

COPYRIGHT © 2021 AC INFINITY INC. ALL RIGHTS RESERVED

No part of the materials including graphics or logos available in this booklet may be copied, photocopied, reproduced, translated or reduced to any electronic medium or machine readable form, in whole or in part, without specific permission from AC Infinity Inc.

www.acinfinity.com