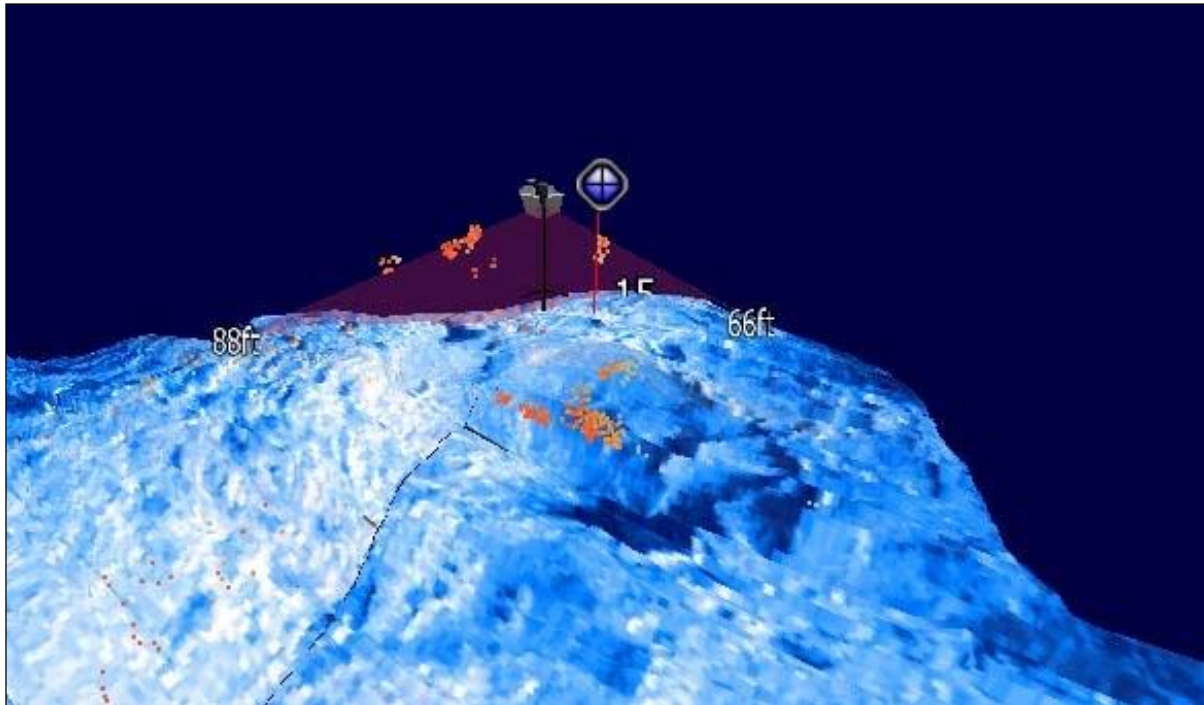


# Lowrance StructureScan 3D

There have been many gains in fishing technology over the last number of years, some that have made an everlasting impact and some that did not. Lowrance has now introduced their latest segment of technology, the StructureScan 3D module. With this technology, one has the ability of viewing the three dimensional view of the water below.



The reason I say the “water below” is because this is not just the view of the bottom structure, but also a full view from top to bottom, of the entire water column. This view also shows some key elements, namely fish and how those fish are relating or not relating the bottom structure below.

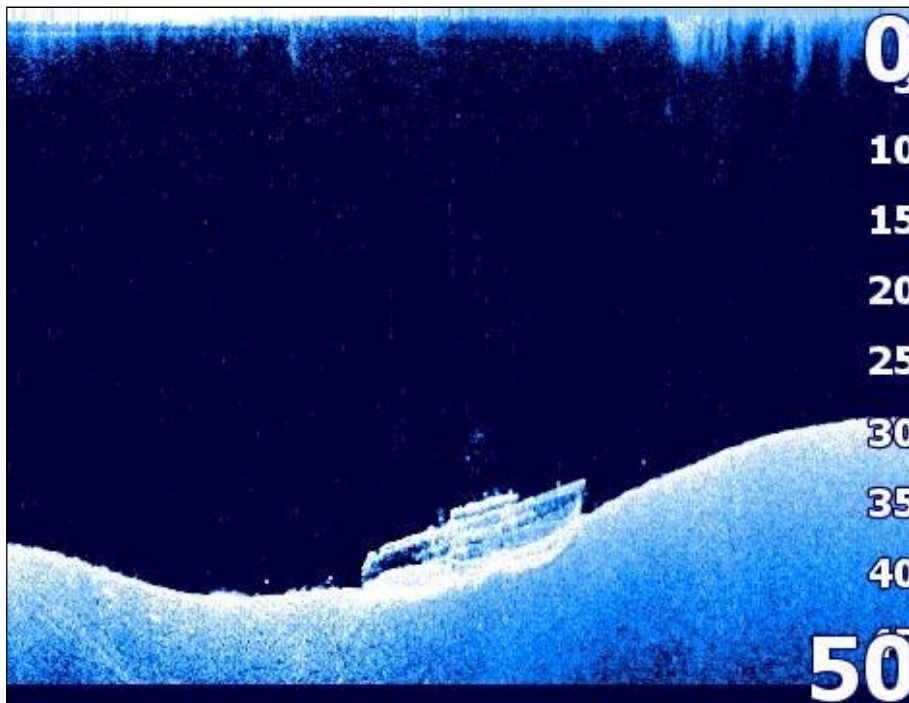


Lowrance Provided Image



Traditional SideScan and DownScan technologies utilize three elements for acquiring data, one center element for DownScan and one on each side for the left and right SideScan views.

The StructureScan 3D utilizes 7 elements within its skimmer and with the aid of the powerful micro-processor of the Lowrance HDS Gen 3, displays not only the 3D view, but also enhanced SideScan and DownScan images as well.



With the early versions of the 3D software, the ability to process all of this data appeared to be an issue, with the screen pausing and slight gaps appearing in the images.

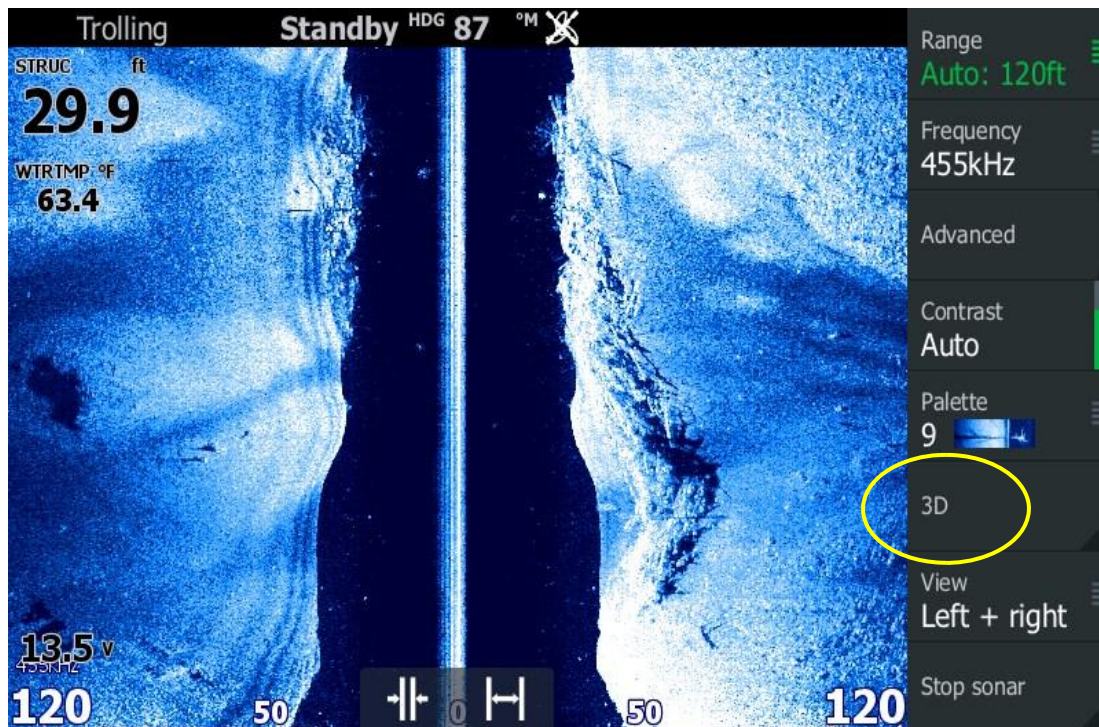
With the latest software release (3.5-54.1.85 and newer), those issues have now disappeared and the system runs very smooth and stable.



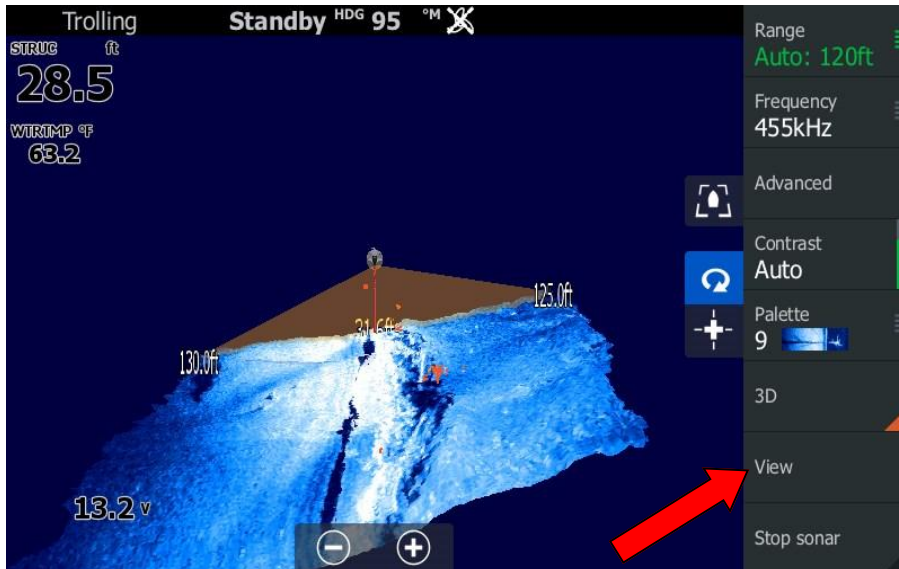
StructureScan 3D launches from the StructureScan menu and has many of the same base menu options such as range, advanced features, contrast and palette choices. One thing to note, 3D cannot be launched in the DownScan view, it must be in Left + Right view. Otherwise the 3D tab will be inactive.

### StructureScan 3D Skimmer

Lowrance Provided Image



Once 3D is initiated, a view of your boat appears and the data starts to load on the screen. As the data loads, one now see's the entire water column, the full 180 degrees from side to side and everything that is in that water column.



When the “view” tab is selected, the user has the ability to enhance the view by adjusting the vertical enhancement of the image, clear the live data, lock in the view of the path and adjust the target sensitivity if desired.

Another key feature of the 3D program is the ability to rotate, tilt and zoom in on whatever feature you want to more clearly see. This is achieved by the

means of panning your finger tip


on selected areas of the screen and then utilizing three tabs on the right side of the screen to control the angle of view.

Having used StructureScan 3D for extended periods of time to this point, all I can say this is just the tip of the iceberg as far as the possibilities that will evolve with this technology. Is this a useful tool for the fisherman? You bet it is! Think of the possibilities, we now have the ability to see the fish (along with their size), the baitfish and also how they each relate to the structure of the body of water. In addition, because there is more data being processed, the DownScan and SideScan views are incredibly crisp and now reach further distances.

I will say on the lakes I fish, I did not use SideScan as much as I should have in the past, mainly because at the depths I fish I found the SideScan image was always too dark to be useful. That is not the case now when using SideScan with the 3D setup, I can now see further and clearer than ever.

Mark O’Neill  
 Doctor Sonar Pro Staff

**Mark O’Neill** is a avid angler, seminar speaker & Lowrance Trainer based out of north-west Illinois.



Mark is on the pro-staff of Alumacraft, Cabela’s, Doctor Sonar, Lowrance, Mercury Marine, MotorGuide, Navionics, Optima Batteries and St. Croix Fishing Rods.

For more information or to contact Mark go to his website:  
[www.structure-fishing.com](http://www.structure-fishing.com)