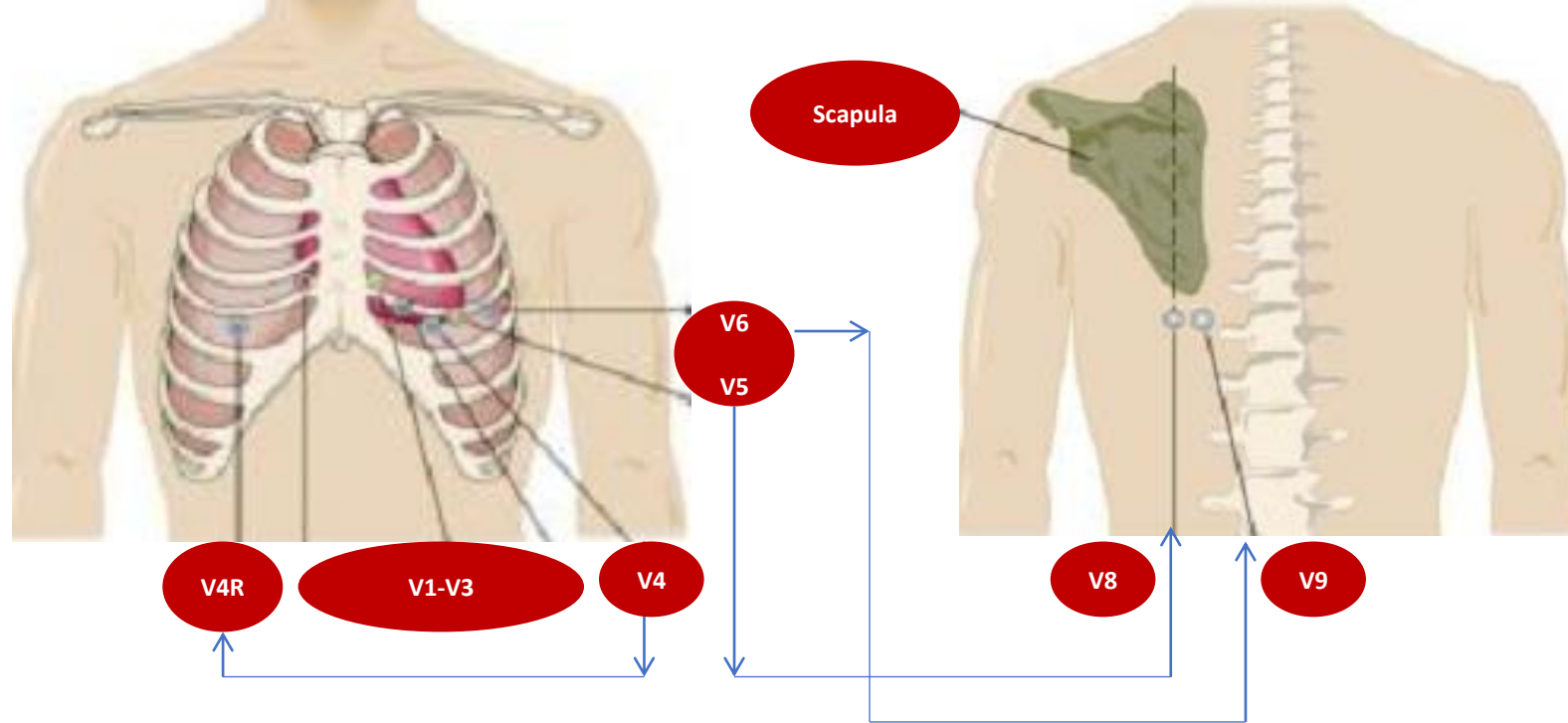


15 Lead ECG Placement

QRS EDUCATIONAL SERVICES 2020

Anterior Chest

Posterior Chest



When to do? With any inferior STEMI to rule out a right ventricular MI. Also can be done with a patient presenting with symptoms but a normal 12 Lead ECG.

How to do? Perform the 12 Lead ECG first. Then, leave all the electrodes on except V4, V5, V6. Take V5 and V6 and place them on the back, same plane as where V4 was placed. V5 will end up under the scapular and V6 will be by the spine. Place V4 on the right side, 5th intercostal space, mid-clavicle. Then you print your second ECG which is the 15 Lead ECG.

How to label the 15 Lead ECG? You must ensure that this ECG is clearly marked '15 Lead ECG', either manually or by the ECG machine printout. If you are making this change manually, you will also need to change V4 to V4R, V5 to V7 and V6 to V9.

What does the 15 Lead ECG look at? V4R looks at the right ventricle, V8 and V9 look at the posterior wall of the left ventricle.

What's the big deal about a 15 Lead ECG? If you see ST elevation in V4R, expect hypotension and the need to administer fluids. Nitroglycerin is contraindicated, even if the BP is adequate.