



**ES Series by**



The Energy Star “**Green**” Machine  
Doing Our Part for Energy & Water Conservation

**ES Series**

LOWEST  
ENERGY STAR  
RATING OF ITS  
CLASS.....

**.936 Gal/Rack**



**ES = Energy Savings**  
**37 Racks/ 34 Gallons/ Per Hour**  
**Powerful 1 1/2 HP Pump**  
**Large Door Opening 20 1/2”**  
**Dual Screens Protects the Pump**

*Same Great Quality*  
*Same Great Results*  
*Just Less Water, Energy, & Chemicals*



Calf Star  
4324 North Cty. Rd. P  
New Franken, WI 54229  
(920) 680-5976 : [info@calfstar.com](mailto:info@calfstar.com) : [www.calfstar.com](http://www.calfstar.com)

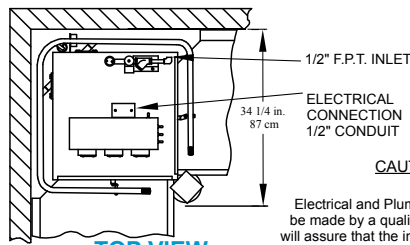
# What can an ENERGY STAR qualified commercial dishwasher save in your establishment?

“Each ENERGY STAR qualified commercial dishwasher can save businesses about 90 Mbtu’s, and average of \$850/year on their energy bills. In addition, businesses can expect to save more than \$200/year and 52,000 gallons/year due to reduced water usage.”

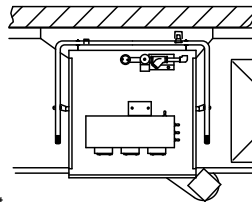
- Cleans 37 Racks Per Hour
- Convertible Design
- 20 1/5” Door Clearance
- Simple to Clean
- Stainless Steel Air Gap
- Powerful 1 1/2 HP Pump
- Large Capacity Scrap Accumulator



Available as a Straight-Thru, Corner, or 3-Doors-Up

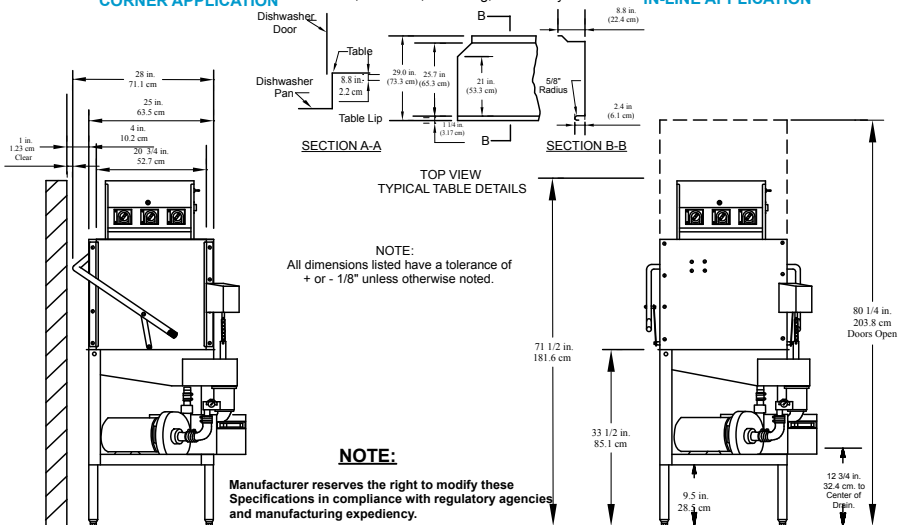


**TOP VIEW**  
CORNER APPLICATION



**TOP VIEW**  
IN-LINE APPLICATION

**CAUTION:**  
Electrical and Plumbing connections must be made by a qualified Service Person who will assure that the installation is in compliance with all applicable federal, state, and local Health, Electrical, Plumbing, and Safety Codes.



**NOTE:**  
All dimensions listed have a tolerance of +/- 1/8" unless otherwise noted.

**NOTE:**  
Manufacturer reserves the right to modify these Specifications in compliance with regulatory agencies and manufacturing expediency.



WWW.AMERICANDISH.COM



AF/AF-C Series

|   | AF-ES   | AFC-ES |
|---|---|--------|
| <b>RATED CAPACITY (Racks/Hour)</b>  | 37  | 12     |
| <b>WASH TIME (Sec.)</b>   | 50  | 75     |
| <b>RINSE TIME (Sec.)</b>  | 30  | 60     |
| <b>DWELL (Sec.)</b>   | 10  | 15     |
| <b>TOTAL CYCLE TIME (Sec.)</b>  | 90  | 150    |
| <b>WATER TEMPERATURE (Supply)</b>   | 120° F Min.<br>49° C Min.                             |        |
| <b>WATER CONSUMPTION</b>  | .936 Gal's Per Cycle<br>3.543 Liters Per Cycle        |        |
| <b>MOTOR</b>  | 1.5 HP<br>1.125 KW                                    |        |
| <b>ELECTRICAL RATINGS</b>   | 115 Volts<br>Single Phase                             |        |
| Connect to Supply Source using 10-12 AWG copper wires. Circuit Protection: 20 AMP Circuit Breaker or Fuse with a 20 AMP Rating. |   |        |
| <b>RACK SIZE</b>  | 19 3/4" x 19 3/4"<br>50.2 cm x 50.2 cm                |        |
| <b>DOOR CLEARANCE</b>   | 30 3/4" x 20 1/2"<br>52.7 cm x 52.1 cm                |        |
| <b>WATER INLET</b>  | 1/2" F.P.T.   |        |
| <b>DRAIN (Scrap Trap)</b>   | 2" Pipe   |        |
| <b>HEIGHT (Door Open)</b>   | 80 1/4"<br>203.8 cm                                   |        |
| <b>HEIGHT (Door Closed)</b>   | 71 1/2"<br>181.6 cm                                   |        |
| <b>WIDTH (Overall)</b>  | 33 1/2"<br>85.1 cm                                    |        |
| <b>WIDTH (Table to Table)</b>   | 33 1/2"<br>85.1 cm                                    |        |
| <b>DEPTH (Overall)</b>  | 63.5 cm   |        |
| <b>SHIPPING WEIGHT</b>  | 34 1/4"<br>86.9 cm                                    |        |
| <b>SHIPPING DIMENSIONS</b>  | 300 lb.<br>136 kg                                     |        |
|   | 36" L x 36" W x 78" H<br>91.4 cm x 91.4 cm x 198.1 cm |        |

Effective: 04/2009

© 2009 American Dish Service

ADS has built a strong history based on Customer Service, Quality and Reliability. A Commitment to Excellence is the driving force behind American Dish Service.

**WARNING:** Cancer and Reproductive Harm - www.P65Warnings.ca.gov