

ZOOMPAD

ZoomPad中文安装视频
Bilibili:Meletrix

ZoomPad build guide video
Youtube:Meletrix

 meletrix.cn / meletrix.com
 service@meletrix.com

ZoomPad

快速安装指南
BUILD GUIDE

包装内容 PACKAGE CONTENT

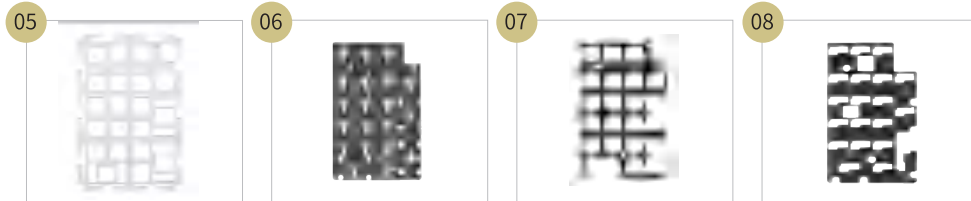


01
包装盒
Box & Storage Case

02
上下盖
Case

03
背部饰板
Back Plate

04
三模开槽RGB PCB
Tri-mode Non-Flex
Cut RGB PCB

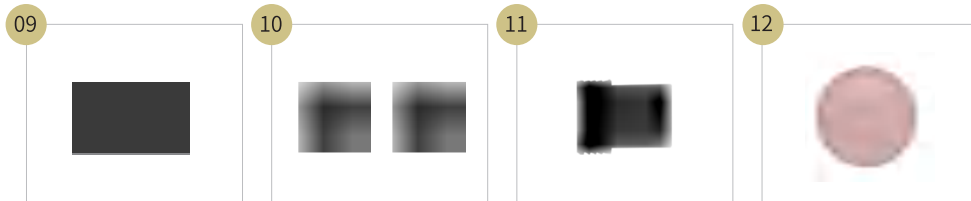


05
PC定位板
PC Plate

06
PORON轴下垫
PORON Switch Foam

07
PORON夹心棉
PORON Plate Foam

08
PORON底棉
PORON Case Foam



09
PORON电池仓填充棉
PORON Battery Foam

10
gasket四周套管
Gaskets

11
2.4G接收器
2.4G USB Receiver)

12
外部配重
External Weight



13
旋钮
Knob

14
电池
Battery

15
分离小板
Daughterboard

16
螺丝扳手
Case Allen Key

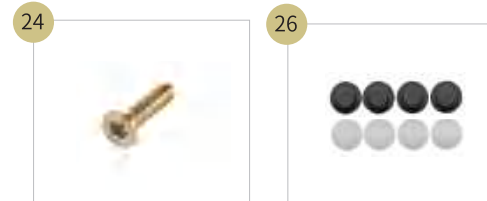


18
卫星轴
WS Stabilizers

19
卫星轴螺丝包
Size: 圆头十字 M2*5
Screws Bags Size: M2*5

20
铜柱
Standoff

21
铜柱螺丝
Size: 十字平头 M2*3
Standoffs Screws
Size: M2*3



24
上下壳体用螺丝
Size:内六角沉头 M2*8
Case screws
Size: M2*8

25
脚垫
Rubber Feet

*14 电池*12.4G接收器仅限无线版本

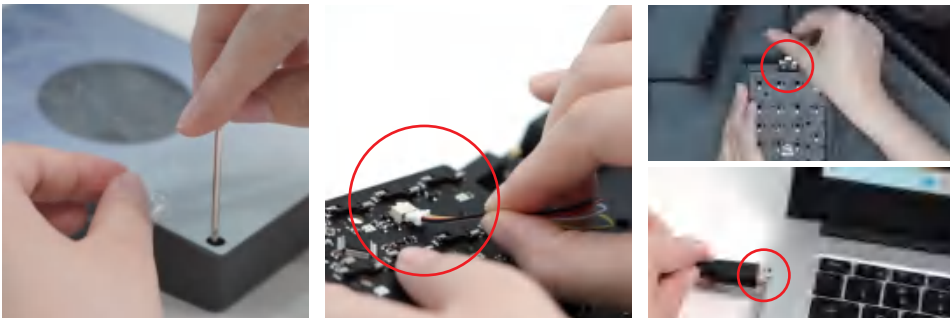
*14 and*12.4G The battery is for the wireless version only.

安装步骤 INSTALLATION STEPS

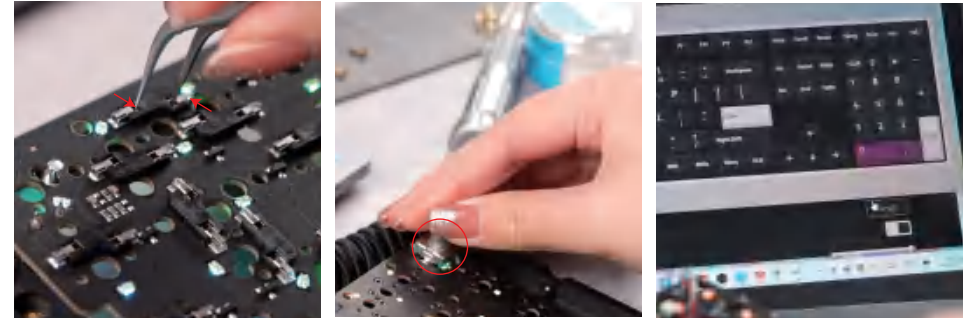
- 01** 先检查外包装是否有破损,确认后打开包装盒,检查物品是否齐全。如有缺失,请联系您购买商店的客服。
Please make sure to check if the brown or black packaging box is undamaged. Please check if the items listed above are not missing. If you're missing any of the items above please contact the store you purchased it from before proceeding ahead.



- 02** 先测试下PCB功能是否正常:取下外壳,然后将小板的排线插到PCB上,然后数据线连接好电脑和小板接口。
To test the function of the PCB first: remove the top case of the kit, plug the daughter board cable into the PCB. Then use the coiled cable to connect the computer and the daughter board.



- 03** 先用镊子去进行轴座的触发测试,再测试一下编码器是否正常(左右旋转往下按即可),电脑VIA对应键亮起则PCB正常。(如遇异常请立即联系购买平台的客服)
First use the tweezers to test the socket, then test again whether the encoder is normal (turn left and right and press down) the corresponding key will light up on the via to indicate that it can work normally. (If there is something wrong, please contact the store you purchased it.)



- 04** 测试蓝牙功能:拿出电池,连接pcb接口,将轴体插在NUM和1上,先按NUM再按1,长按几秒,绿色指示灯快闪,拔掉数据线,按任意键无线模式下可以正常的触发表示蓝牙功能正常。(如遇异常请立即联系购买平台的客服)
Test the bluetooth function: take out the battery, connect the PCB interface, plug the socket into NUM and 1, press NUM first, then press 1, long press for a few seconds, the green indicator light flashes, unplug the data cable, under wireless mode any key can be triggered means the bluetooth function is normal. (If there is something wrong, please contact the store you purchased it.)



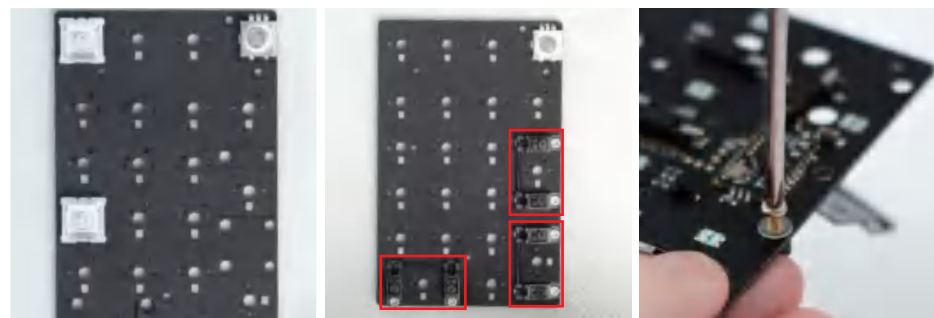
05 2.4G功能测试:轴体插在NUM和4上,先按FN再按4,紫色指示灯快闪,将2.4G接收器插入电脑连接成功后紫色灯会闪烁一次,不插数据线的情况下按任意键触发表示连接成功。

Test the 2.4G function: plug the socket into NUM and 4, press Fn then 4, the purple indicator will flash quickly. After the 2.4G USB receiver is successfully connected to the computer, the purple light will flash once. Press any key to trigger it without plugging the data cable to indicate that the connection is successful.



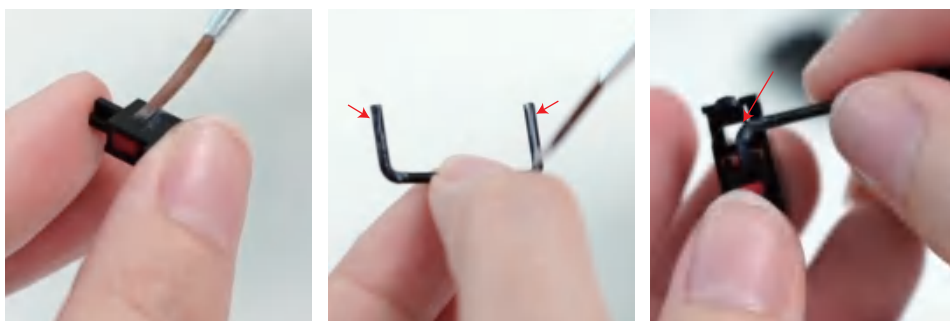
安装卫星轴:拿出PCB和轴下垫,把轴下垫磨砂面朝上放置在PCB上,然后用轴体固定轴下垫,注意孔位(卫星轴勾脚对准大孔),最后装上螺丝脚垫,拧上螺丝。

Install the stabilizer:take out the PCB and the lower socket pad, place the frosted surface of the lower socket pad on the PCB, then use the socket body to fix the lower socket pad,pay attention to the hole position(stabilizer hook feet to the big hole), and finally install the screw rubber feet and tighten the screws.



06 下一步,润卫星轴:拿出卫星轴,先用润滑膏润一下轴心两侧和钢丝末端,再把钢丝放到假轴轴心里,由下至上按下去。

Next, to lubricate the stabilizer: take out the stabilizer, apply grease on both sides of the stabilizer stem and on two ends of the steel wire. Then put the steel wire into the stabilizer stem and press it down from bottom to top.



07 夹心棉分好正反后放置在PCB上,取出定位板安装套管,再安装定位板铜柱,并放置在PCB上,最后拧上铜柱螺丝。

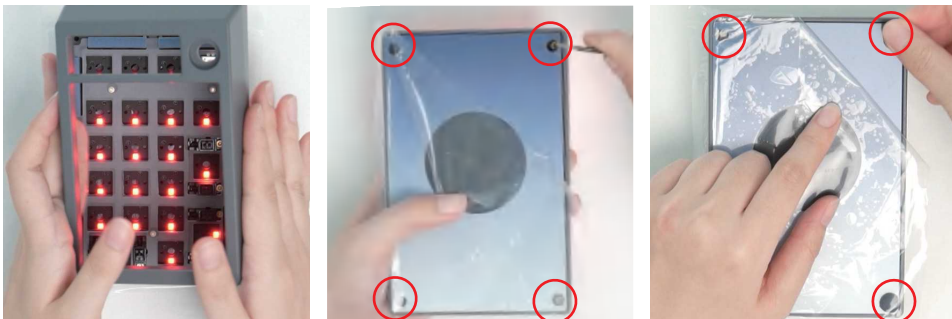
Put the poron plate foam on the PCB(pay attention to distinguish the front and back), take out the PC plate to install the gasket sleeve, then install the PC plate copper column and place it on the PCB, finally screw the standoff screws.



- 08 最后我们装一下底棉,这样内胆就装好啦!然后取出外部配重,装在底壳上拧上螺丝。再放上电池,插在PCB电池端口上。
Finally, let's install poron PCB foam so the inner liner is ready! Then take out the external weight and install it on the bottom case and screw it. Then put the battery on and plug it into the PCB battery port.



- 09 调整好内胆后,放上外壳,快速锁好上下壳固定螺丝,上好外壳螺丝之后最后安装上脚垫。
After adjusting the inner liner, put on the case, quickly lock the upper and lower case fixing screws, and finally install the rubber feet after the case being screwed.



- 10 安装好所有轴体。
Install all the sockets.

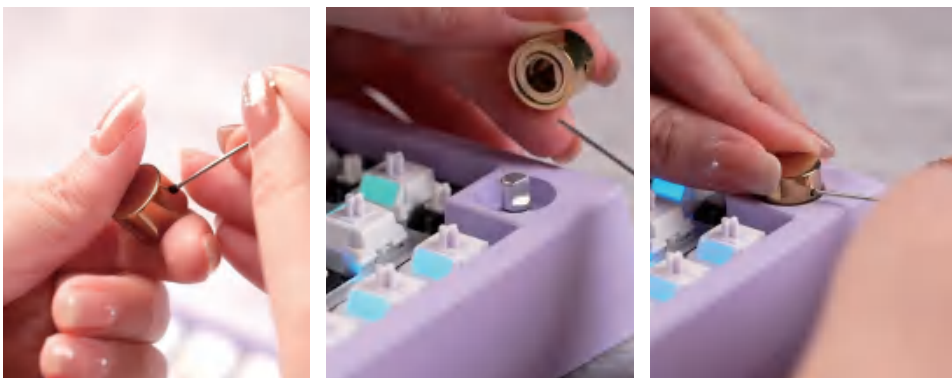


- 11 安装好所有键帽。
Install all the keycaps.



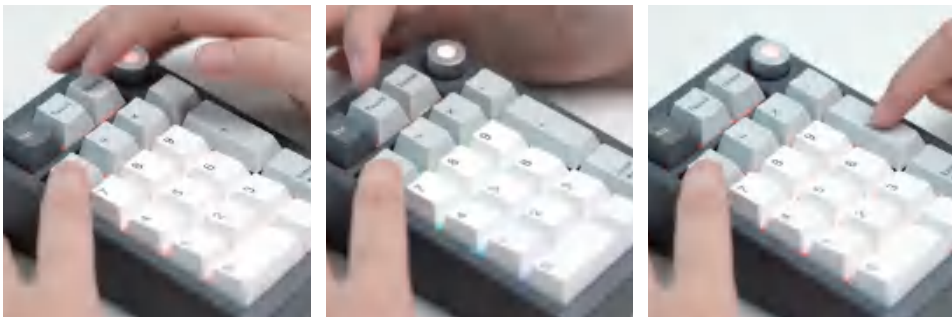
12 取出我们配套的发光旋钮,找准位置,用我们配套的小号螺丝刀拧紧固定螺丝即可.拧紧螺丝后,轻轻拉扯不掉落则表示安装无误(以下图片仅作参考)。

Take out our matching lighting knob, find the right position and use the matching small screwdriver to tighten the fixing screw. Gently pulling and not fall means that the installation is correct(the following picture is only for demonstration).



13 最后的最后,给大家演示一些快捷键:NUM+Del 是RGB开关的快捷键,NUM+Pause 是切换灯效,NUM+“+”灯光亮度减少,NUM+“-”灯光亮度增加。

Finally, let us show you some shortcut keys: NUM+Del is the shortcut of the RGB switch, NUM+Pause is to switch the light effect, NUM+ “+” is to reduce the brightness while NUM+ ”-” is to increase the light.



14 最后我们本期的教程就到此结束了,下期再会。

This building guide is over till now, wait to see you next time!

