

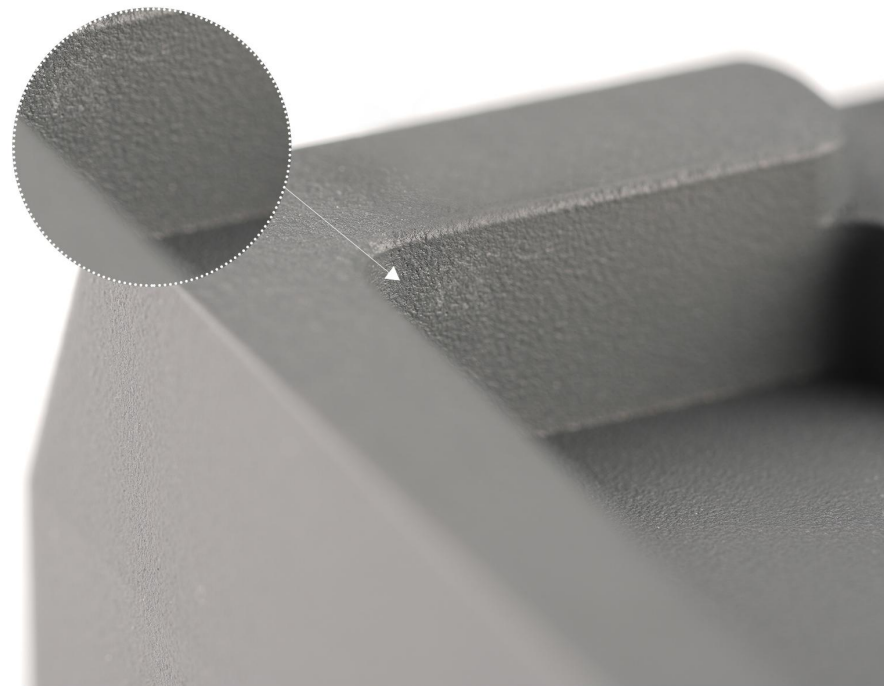
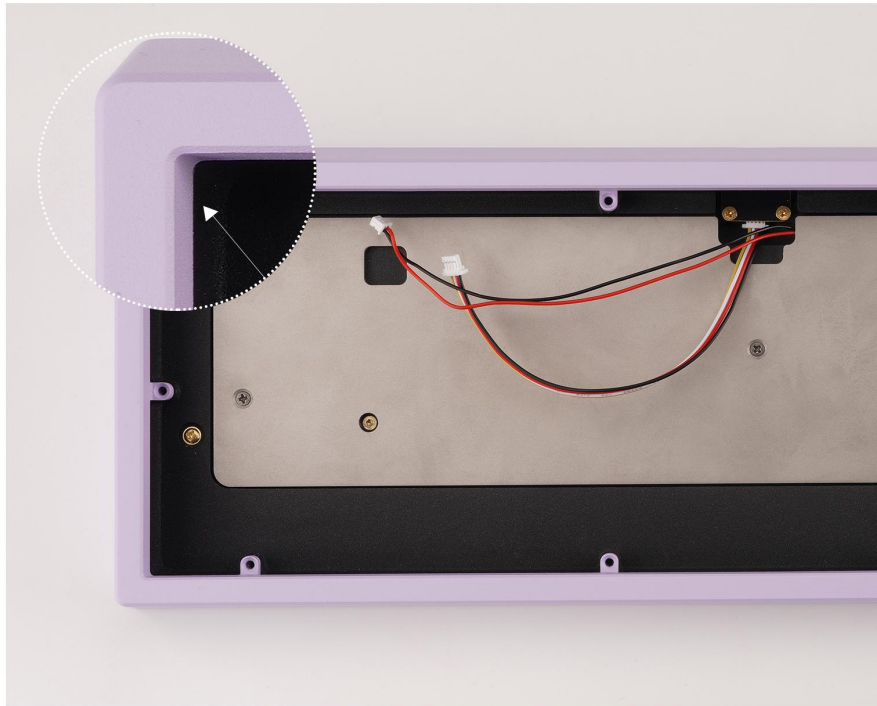
Zoom 65 V2 Product Disclaimer

1.The delivery time is the scheduled date. In the absence of force majeure (natural disasters including but not limited to epidemics, etc.), the delivery will be on time. In case of other unknown force majeure interference such as epidemics, the time will be postponed and will be updated on the official website.

2. The product is not assembled and requires hands-on ability or building, please think carefully before buying. After unpacking, it is not possible to return or exchange the product on the grounds that it cannot be assembled. After-sales returns and exchanges, the entire package must be kept intact, accessories and gifts are not missing, and the appearance is not damaged.

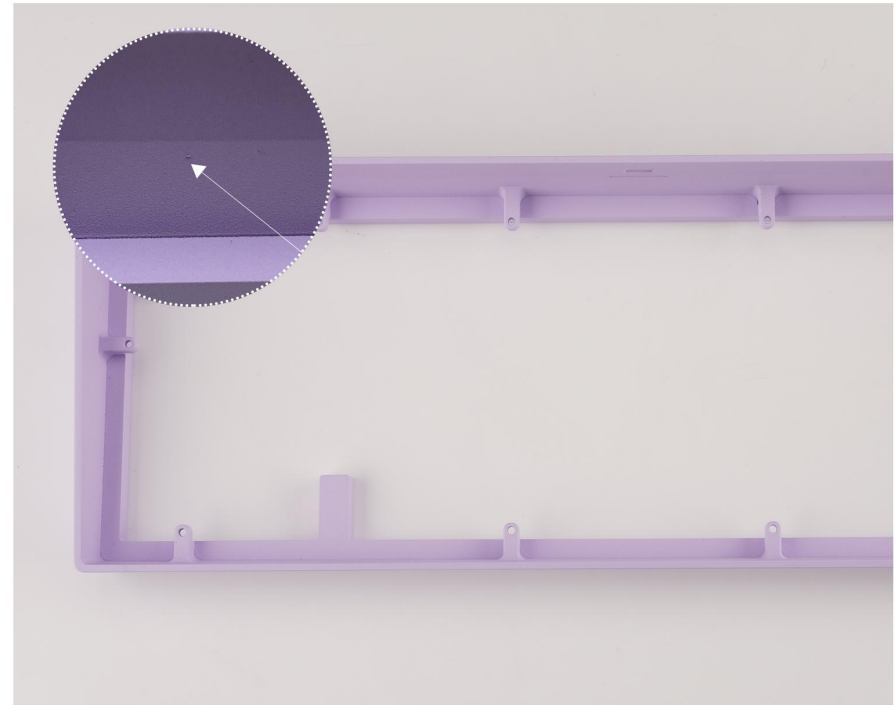
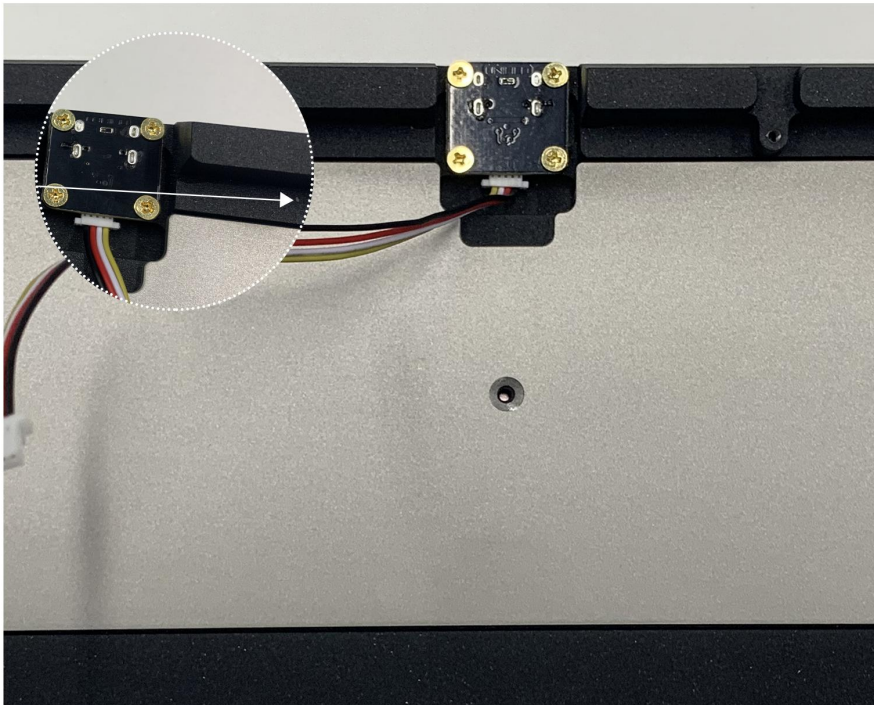
3.The process of ZOOM65 V2 uses electrostatic coating (nano spray-coating process) . Due to the special surface process properties, there may be minor and unavoidable dust spots on the surface of the case and there are certain textures. The visual distance of dust spots is 30cm, and the spot size is <0.1mm on the entire surface. If it does not exceed 2 points, it is not in the after-sales range inside.

The appearance surface includes the visible surface after the assembly is completed, that is, the top, bottom, left, right, front, and back 6 sides, there will be no defects > 1mm, and the distance between adjacent defects > 100mm, and there is no processing knife pattern.



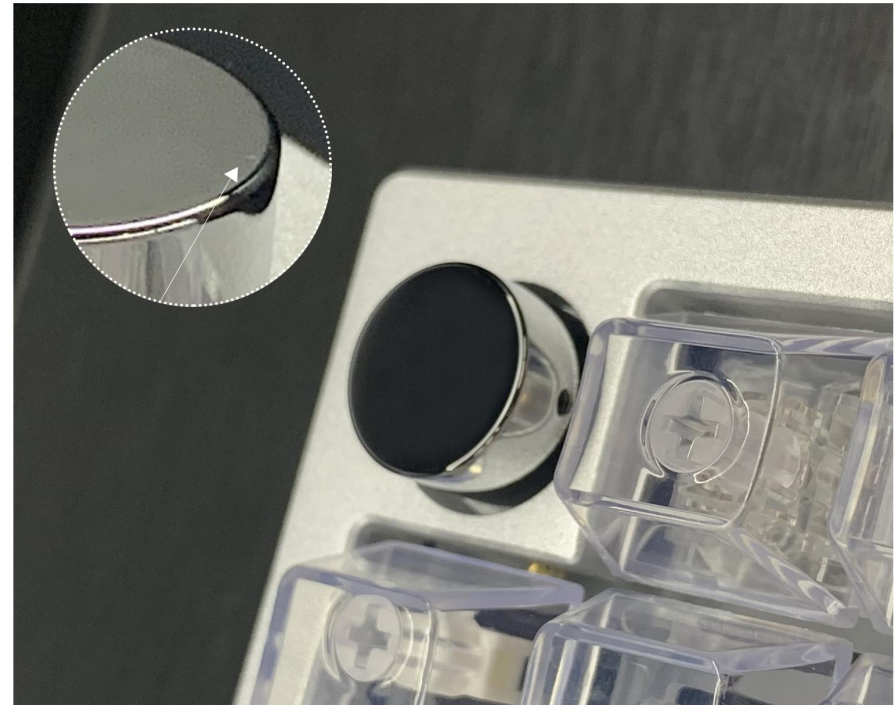
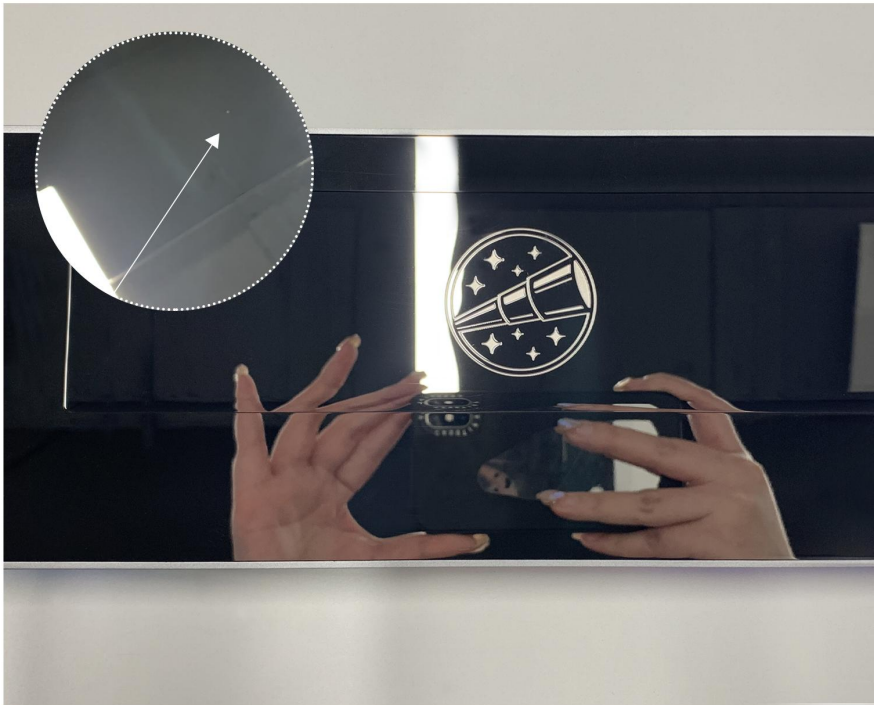
1. This is an example picture of slight dust spots and sprayed textures, and there may be some textures at the corners.

We have improved the internal spraying process of Zoom 65 V2 this time, but there will still be slight dust spots or bumps, which will be completely covered after installation and will not affect the appearance and usage.

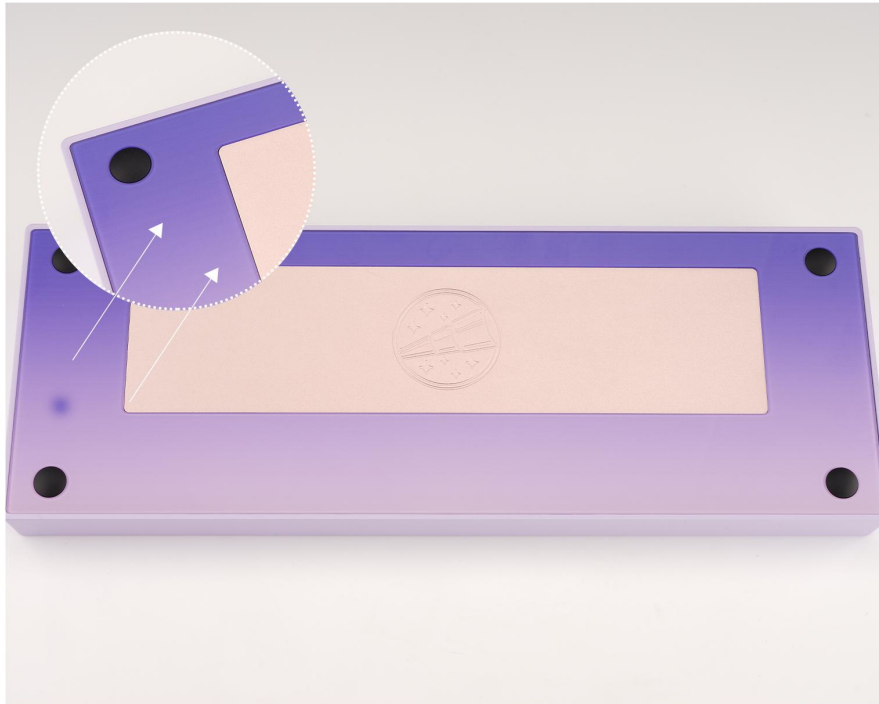


2.The size of the internal spraying point is $<0.1\text{mm}$, and the whole surface does not exceed 3 points, which is within the acceptable range of our QC inspection.

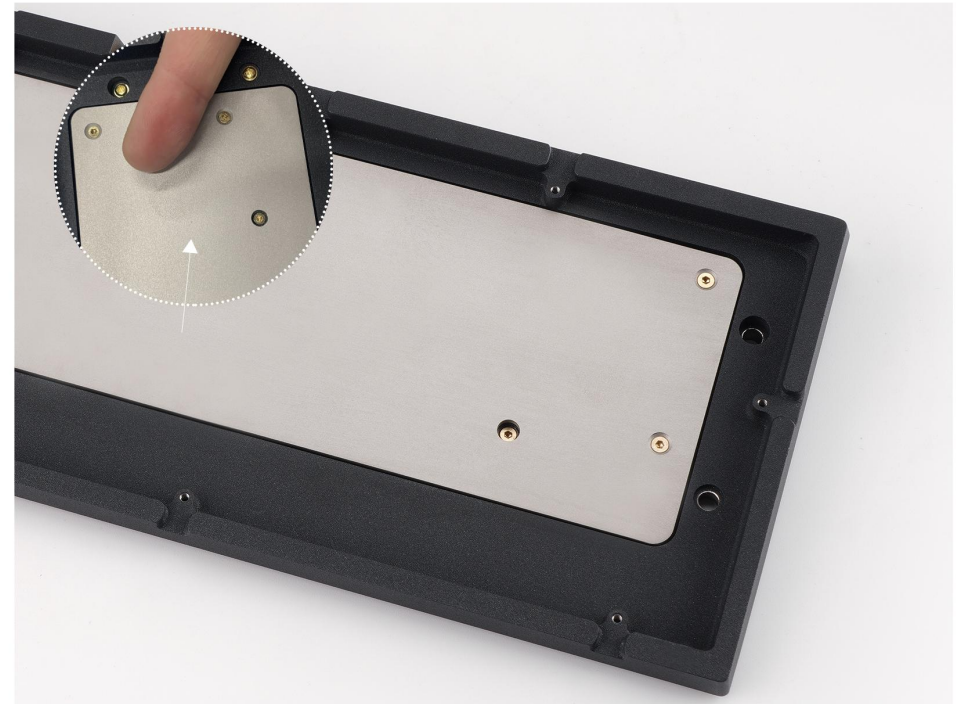
Due to the technical limitations of the stainless steel PVD mirror, it is difficult to ensure that the appearance of the mirror is 100% free of any hair marks and pits.



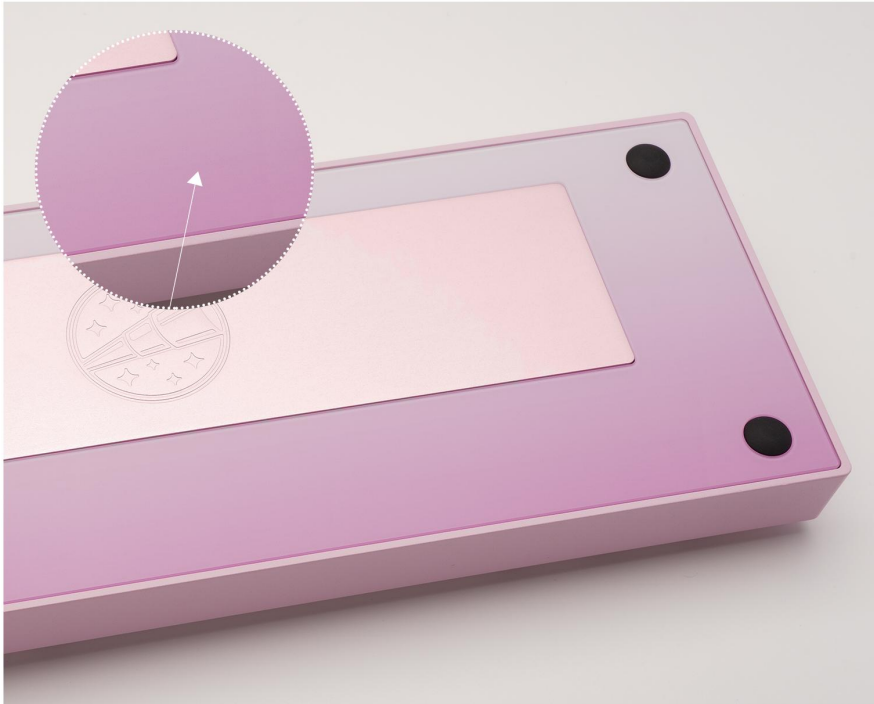
3. Visual inspection of 30cm, dot size $<0.1\text{mm}$, and no more than 2 dots or scratches on the entire surface will be within the acceptable range of our QC inspection.



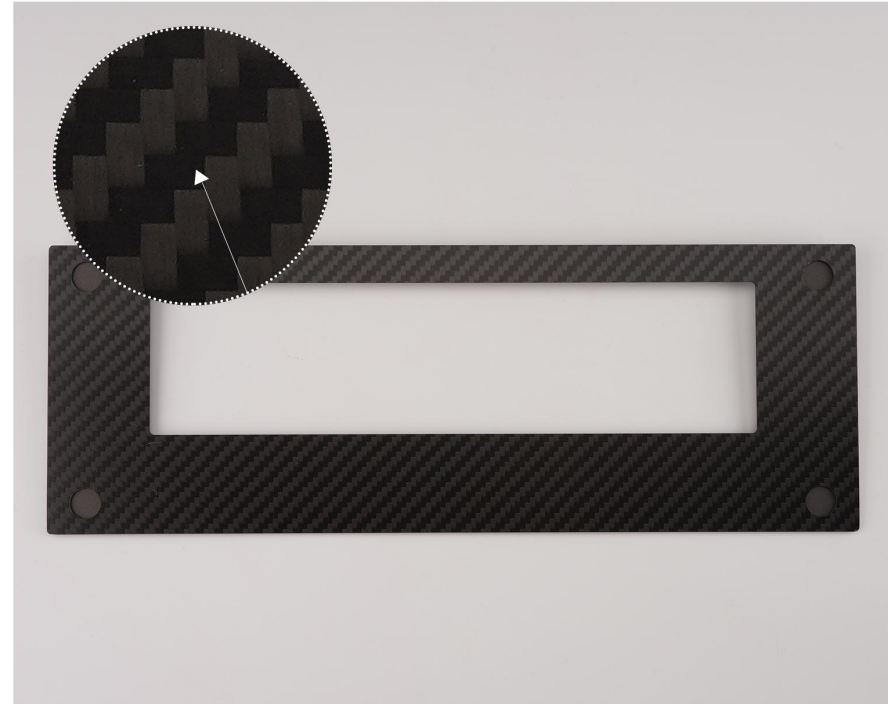
4.The cases and assembled parts may have slight tolerances and fit clearances.



5.Although the stainless-steel internal weight has been sandblasted and anti-oxidized, there will be inevitable fingerprints as long as it is touched, which can be wiped off with alcohol cotton pads. This is within the acceptable range of our QC inspection. We only carry out after-sales for serious defects on the non-assembly surface.

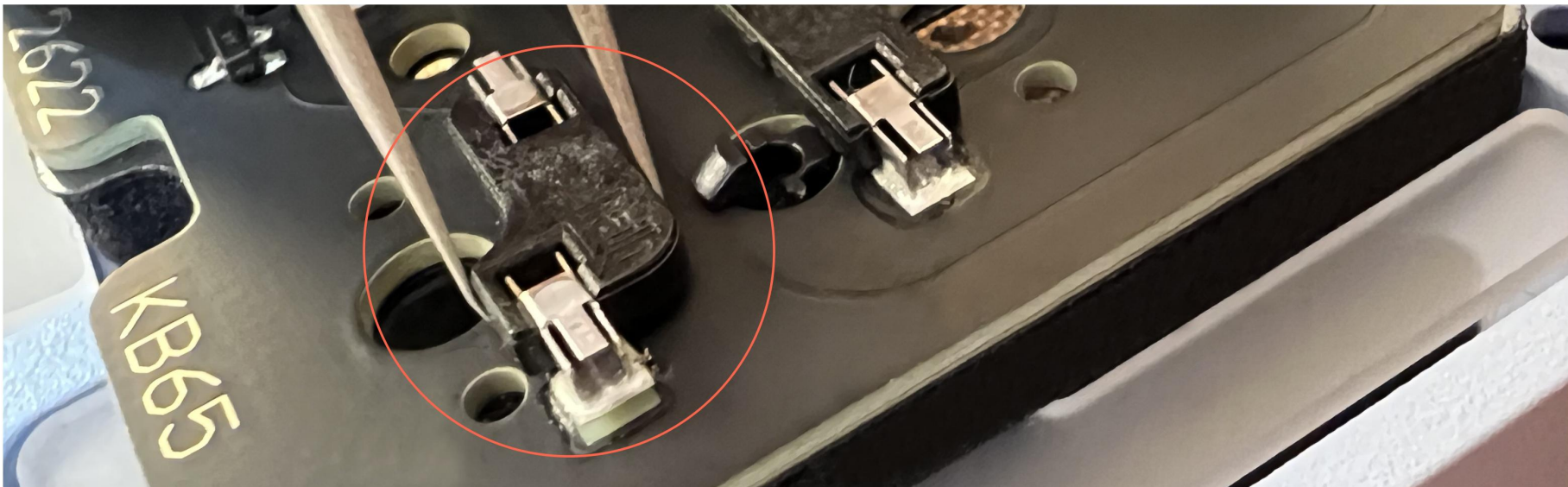


6. Due to the printing process of the glass back plate, there will be subtle textures in the colored glass, which is a normal phenomenon. The rendering is for reference only, please refer to the actual product for details.



7. Due to the special material of the carbon fiber back plate, small white spots may be seen after magnification, which cannot be avoided on this material. The above sample pictures are all within the acceptable range of our QC inspection.

8. Since the screws will be assembled on the cases in advance, there may be inevitable screw marks and paint peeling. The visual distance of 30cm, and the defect of paint peeling size $> 0.1\text{mm}$ is within our after-sales range.



9. Please check the socket and its function the first time after receiving the PCB. All failures caused by man-made are not within the scope of after-sales service, and free shipping for non-man-made damage failures is guaranteed for 12 months. Socket problems, pad problems, charging IC damage, chip damage and other man-made faults can contact customer service on the official website or send an email for paid repairs.