

OPERATING PROCEDURE



OSPREY DEEPCLEAN[®]
STEAM CLEANING TECHNOLOGY

- **Always** Check daily before use that the power supply cable, plug and sockets are in good condition; check for visible signs of damage (do not use if damaged)
- **Always** Follow the correct procedure when filling the water reservoirs and waste tank
- **Always** The use of disposable gloves and aprons is recommended with this machine
- **Never** allow any part of the **SteamForce 10** to be immersed in water
- **Never** allow inexperienced, untrained or unauthorised people access to the **SteamForce 3**

Operating Procedures on the SteamForce 10 (Vac)



Lift the cap to the water reservoir, insert the red funnel and fill with ONLY cold clean tap water.

NEVER fill with detergent or chemical



Plug the machine into a suitable 3 phase electrical socket and press the ON/OFF switch to the ON position



Press the boiler switch button to the ON position and allow the machine to heat up



After approx. 7 minutes until the green "Ready" light stops flashing. The machine is now ready to use.



Connect the steam hose to the steam socket



Select the required accessory and screw firmly onto the pistol grip in a clockwise direction. To change the accessory, simply unscrew in an anti clockwise direction



Set the steam volume required using the steam regulator



To operate the steam, pull and hold the trigger on the pistol grip.



When the red water reservoir light illuminates, stop operation straight away and refill



The orange light is for detergent use and is not applicable when equipment is in use as

Note:

In accordance with PSSR 2000 the machines should be serviced within 14 month intervals.

* The orange switch is for use with chemical which is not required for this application

Operating Procedures on the SteamForce 10 (Vac) (cont)

Addition of chemical



If chemical is required, remove black cap and fill the chemical bottles with an approved chemical

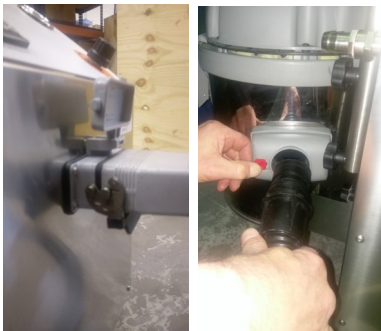


Firmly connect the chemical filler tubes from the chemical bottle to the rear of the machine



Chemical dosage is controlled via the pistol grip. Depress and hold the button on top of the pistol grip whilst simultaneously pressing the pistol grip

Using the vacuum



Connect the steam & vacuum hose to the front socket then connect the black vacuum pipe to the vac unit by sliding the red clip to the left. Push the hose into the vac socket and release the red clip to lock in to position



Ensure the Vac unit is connected to the rear of the machine (bottom left corner)



Switch the vacuum unit on using the white switch at the top.



The vacuum is controlled via the pistol grip. Push the right side button once to use the vacuum. Press again to turn vacuum off. The button on the left activates chemical facility. Press & hold to dispense chemical with the steam using the pistol grip.



Note:

In accordance with PSSR 2000 the machines should be serviced within 14 month intervals.

* The orange switch is for use with chemical which is not required for this application