

Sleuth



simple ear[®]

hear better, be your best.

Contents

Preface	i
Features	1
Preparation.....	2
Assembly	3
Positioning your device	4
Operation.....	5
How to use.....	6
Volume Control	6
Program Button	7
Maintenance	8
Troubleshooting.....	8
Replacing the battery.....	9
Cleaning	10

Preface

Congratulations on your Simple Ear® purchase. Please read this user manual carefully before use. This user manual applies to the BTE (Behind-The-Ear) hearing device.

Intended use

This hearing device is an electronic device, which amplifies sounds from your surrounding environment. It will help people with hearing loss or those who just want to enhance their ability to hear conversations in noisy environments.

Precautions

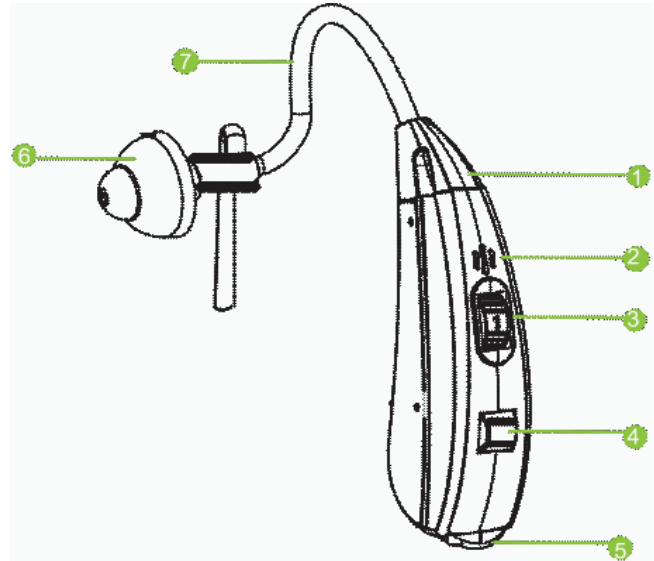
Please consult your hearing health care professional if you have any questions about your hearing.

**Live customer service available Monday – Friday 9am – 5pm EST
Toll Free 470-474-6753**

**For parts and accessories, please call Monday – Friday 9am – 5pm EST
Toll Free 470-474-6753**

Features

1. Front Microphone Port
2. Rear Microphone Port
3. Volume Control
4. Program Button
5. Battery Door
6. Outlet Microphone Port



Battery Installation

When placing the battery into your device, put the battery with the positive (+) side (or flat side) up and insert it into the battery door. The door will not close if the battery is inserted incorrectly. Do not force the door closed.

CAUTION: Batteries are dangerous if swallowed! Keep batteries away from children and pets. Never put batteries in your mouth for any reason. In case a battery has been swallowed, seek immediate medical attention.

TO TURN ON- Gently open the battery door, insert battery and close door. Then the device would be equipped with a power on delay, you will be given several seconds to fit the device comfortably before it turns on.

TO TURN OFF- Simply open the battery door completely. Store it in a safe dry place.

Attach your hearing device parts

Your hearing device consists of three basic parts: The hearing device housing, the sound tube, and the dome.

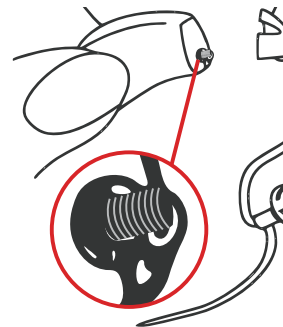
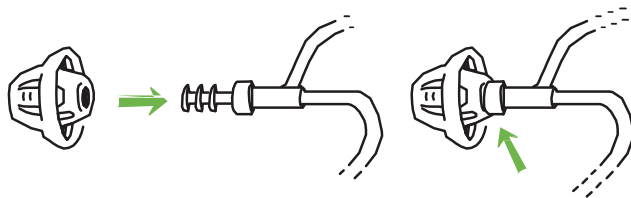
To attach the dome, push the dome completely over the grooves on the tube to mount it securely.

To attach the sound tube, hold the connector end of the sound tube in one hand and the hearing device in the other, and screw the tubing to the hearing device until properly secured.

Note: Your hearing device is supplied with two tubes.

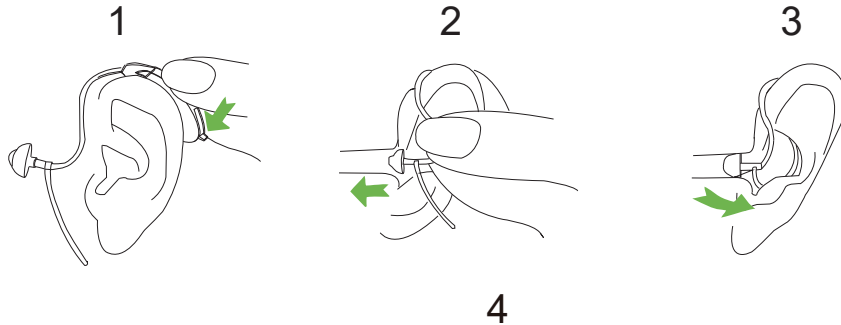
RED lettering is for right ear

BLUE lettering is for left ear



Position your hearing device

1. Place the hearing device over the top of your ear.
2. Hold the sound tube close to the dome with the thumb and forefinger. Insert the dome with gentle pressure into your ear canal until the tube sits flush against the side of your head. The dome should fit in the ear canal snug, but not tight.
3. Position the retention lock into the outer bowl of the ear above the ear lobe using your index finger.

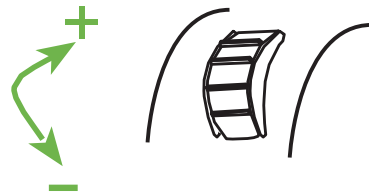


Operation

Volume Control

To adjust the volume, rotate the volume control by your fingertip up and down. Increasing the number will increase the volume.

To increase the volume, turn the volume control up. To decrease the volume, turn the volume control down.



Note: Before wearing the instrument, make sure that the volume is not at the maximum position and is recommended to start the volume on the lowest setting. Adjust the volume gradually according to your own hearing requirements, but not so loud as to cause feedback and to protect your hearing.

Program Button

Your hearing device is equipped with 3 listening programs. When the hearing device is turned on, it will automatically be in program 1. The additional settings are pre-programmed and are accessed by the program button. Each time you press the program button, the hearing device will move to the next program. The sequence is 1, 2, and 3.

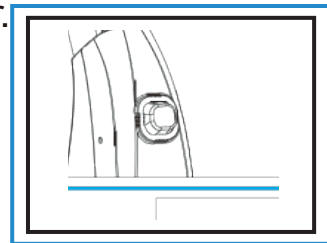
Your hearing device will alert and help you identify which program you are using. When you select program 1 you will hear one beep, program 2 will emit two beeps, and so on.

Please kindly note that the programs are preset by the manufacturer.

1 Beep - Wide Range (Enhances All Frequencies)

2 Beeps - Mild Noise Suppression (restaurants, meetings, etc.)

3 Beeps - Maximum Noise Suppression (Noisy Environments)



Maintenance

SYMPTOM	POSSIBLE CAUSE	SOLUTIONS
No sound	No battery	Insert battery
	Dead or low battery	Replace battery
	Battery improperly inserted	Insert battery correctly
	Wax or debris in the ear-tip	Remove and clean the ear-tip
Not loud Enough	Low battery	Replace battery
	Volume set too low	Turn the volume up
	Improper insertion of ear-tip	Remove and reinsert the ear-tip
Whistling, feedback	Improper insertion of ear-tip	Remove and reinsert the ear-tip
Not clear or distorted sound	Low battery	Replace battery
	Hearing instrument damaged	Contact simple ear

Replacing the battery

When you hear one short beep, it means that the battery is running low. You will hear the warning intermittently until you replace the battery.

1. Switch off the hearing device.
2. Open the battery door and remove the old battery.
3. Remove the protective foil from the new battery.
4. Insert the new battery, and be sure with the plus (+) up.
5. Close the battery door.

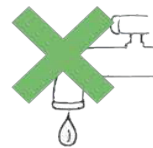
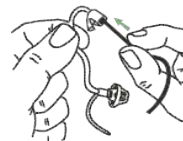
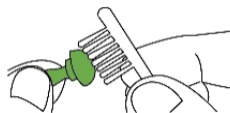
Important: Handle the battery door gently. The operation requires only a minimum of force. If there is any resistance when closing the battery door, ensure that the battery is correctly inserted. The door cannot be closed if the battery is inserted incorrectly.

Cleaning

Keep the hearing device clean and dry. Use a soft cloth to clean and remove any body oil or moisture from the shell of the hearing device. If the hearing device is often in a humid environment or subject to a lot of perspiration, it is recommended to put the hearing device into a simple ear dry caddy at least once a week (make sure device is turned off). Dry caddies are available from simple ear

Do not use water or other fluids to clean the hearing devices. Always be careful when handling the hearing devices to prevent them from falling onto any hard surfaces such as a counter top, table, or floor. Do not leave your hearing device in direct sun or where the temperatures can rise over 60°C / 140°F for extended periods.

Avoid cleaning with any harsh chemicals or strong cleaners.



14700 Oakwood Road
Minnetonka, MN 55345

info@Simple Ear.com

470-4SIMPLE

(470-474-6753)

