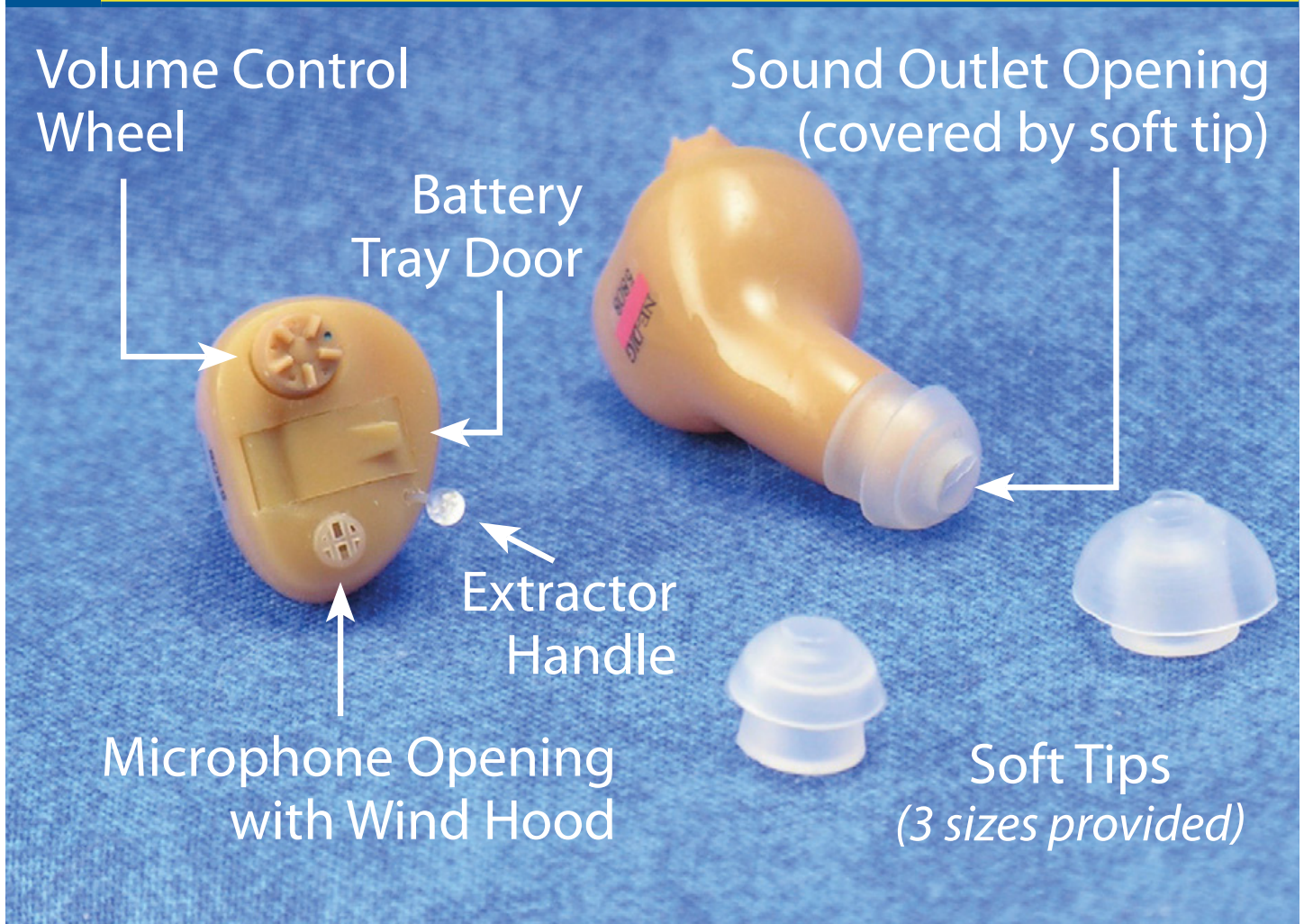




**Pert**

**simple ear®**  
**14700 Oakwood Road**  
**Minnetonka, MN 55345**  
**info@simpleear.com**  
**470-4SIMPLE**

# 1 Product Features



## Unit Identification

The **RIGHT** ear unit is marked by a RED strip.

The **LEFT** ear unit is marked by a BLUE strip.

Remember, the VOLUME CONTROL WHEEL is always positioned ON TOP of the unit when in your ear.



## 2 Installing Batteries

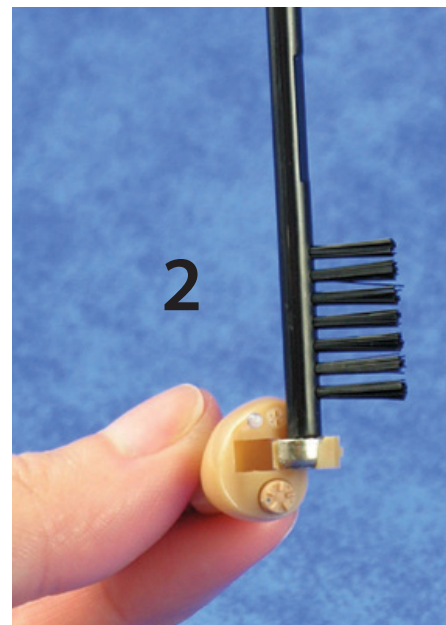
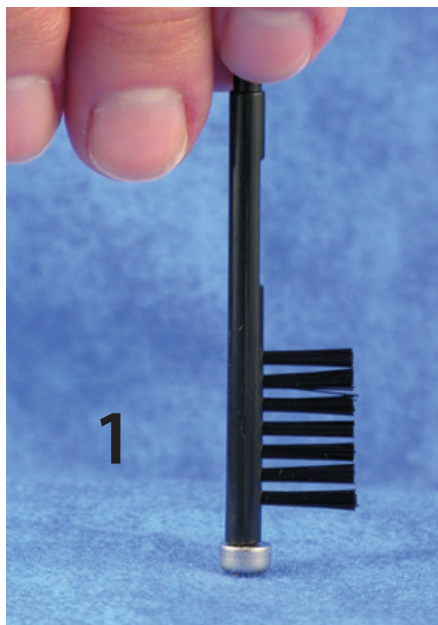
This hearing device is designed to be used with a size 10A battery. Remove the yellow sticker tab that is attached to the battery. Allow the battery to sit for one or two minutes for full air activation.



**Step 1:** Use the magnet end of the cleaning tool to pick up the battery on its flat side (the side with "+" sign).

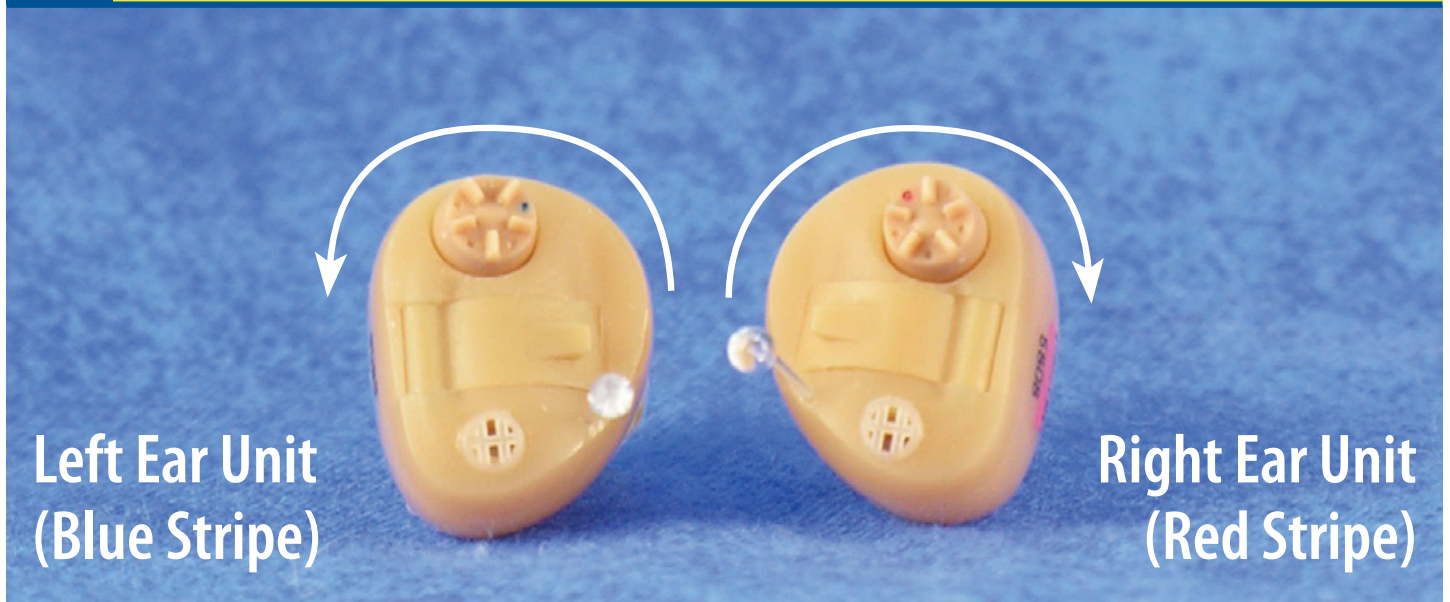
**Step 2:** Position the unit with the volume wheel at the bottom. Open the battery door, position the battery in the tray and slide the magnet off the battery. Shut the battery door.

**Please Note:**  
The unit will make a beeping sound when the battery needs replacement.





### 3 Testing



**Step 1:** With the volume wheel on top turn the volume wheel to full volume (counter clockwise on LEFT BLUE unit and clockwise on the RIGHT RED unit). If the device is in your ear, full volume is towards the front of your head for both units.

**Step 2:** With the battery installed and the volume at full, cup the device in your hand. As you close your hand you should hear a whistling noise. This means the unit is working properly. Turn the volume wheel down.



## 4 Inserting

Grasp the device between your thumb and forefinger. If the instrument is for the right ear use your right hand; if it is for the left, use your left hand. Hold the device so the Volume Control Wheel is up.

Insert the tapered end carefully into the ear canal and gently push it into place using your forefinger. You might find it easier to use your other hand to gently pull the back of your ear slightly backward while inserting the device.

Once the unit is in your ear the volume wheel should be at the top and the unit should fit snugly and completely in the ear canal. If the device is loose, remove it and replace the soft tip with a larger size; if it is too tight try a smaller size soft tip. When you have a snug fit, note which soft tip you have used.



## 5 Changing The Soft Tip

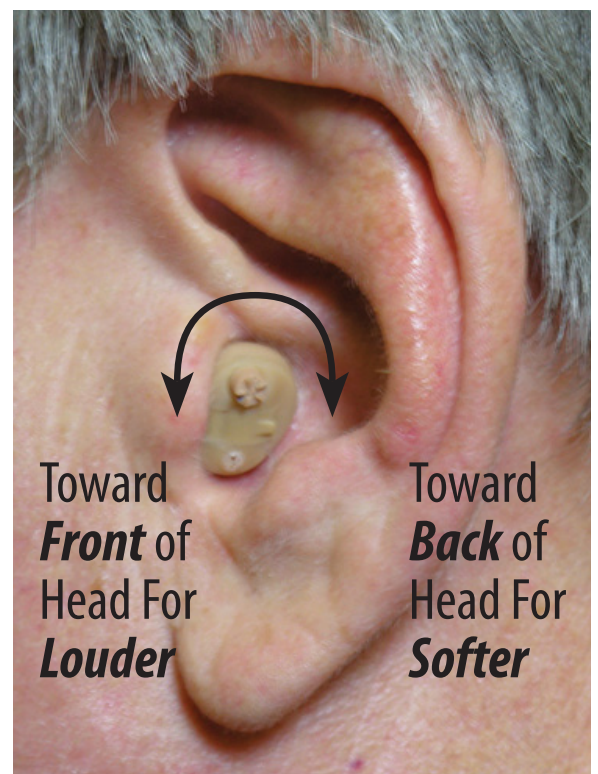
Your unit was shipped to you with a medium size soft tip already in place. To change the tip size to a smaller or larger tip, gently pull the tip off of the hearing aid and firmly push on the tip of your choice.



## 6 Adjusting Volume

Once the unit is in your ear you can adjust the sound level. **INCREASE** volume by rotating the volume wheel with your forefinger **TOWARDS THE FRONT** of your head. **DECREASE** volume by turning it **TOWARD THE BACK** of your head.

Remember to remove your finger from the volume Control Wheel after you set the volume level so the unit can adjust to eliminate any possible feedback.



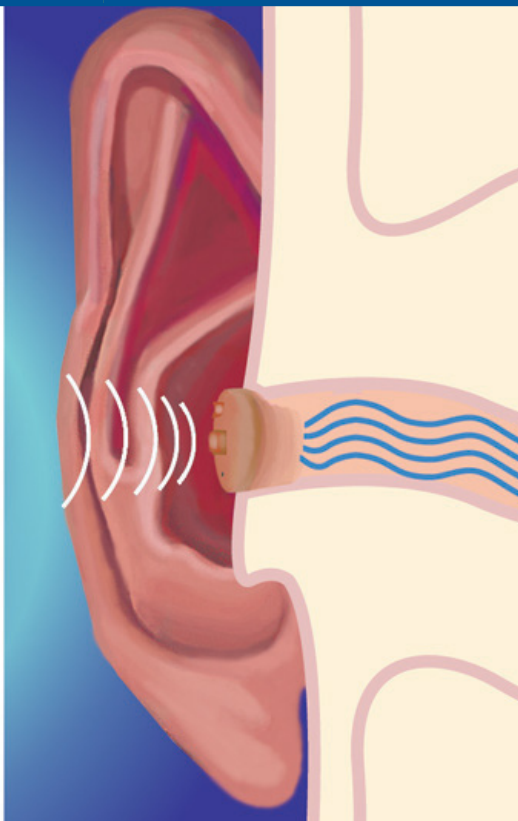


## 7 Removing

Using your forefinger, simply push upward under your ear lobe, the Simple Ear PERT will “slip” out of the ear canal. Remove with the extractor handle.



## 8 Digital Auto Adjusting



The Simple Ear PERT adjusts to your listening environment and automatically filters out background noise.

## 9 Care And Cleaning

Daily cleaning is a must! The number one problem of in-the-ear listening devices is earwax build up. The soft ear tip affixed to your device helps keep wax from getting into the unit. Follow these easy steps to keep your unit working at its best:

Use the Cleaning Brush/Wax Pick to remove any accumulated wax from around the soft tip, sound outlet opening, and microphone opening. You may also use a clean dry tissue to wipe any residue from your unit.

You may use the Wax Pick at the end of the brush to flick away any visible wax being careful not to push wax into the sound outlet opening or microphone opening.

