



VECTOR-II 52" AC CEILING FAN WITH LIGHT

**Corrosion resistance
with a modern design**

50W
AC
MOTOR

ABS
BLADES

52
INCH
1320mm

10804
m³/hr
AIRFLOW

15°
CEILING
RAKE MAX

18W
1400LM

4000K
COLOUR
TEMP

*** — — ***
DIMMING

6YR
WARRANTY

Wall control
Included



Vector fans are made from rust and UV resistant ABS plastic giving you endless options of where you can place them around your home. A simple modern design will compliment any space whilst giving you a great airflow.

- Patented* Ezi-Fit blades reduce fan assembly and installation time
- Durable corrosion and UV resistant body and canopy construction with high strength moulded ABS blades
- 3 speed wall control with switch included
- Reversible All-Seasons technology for use all year round
- 85% pre-assembled out of the box for fast installation
- Powerful 50W AC motor
- 18W 1400lm Cool White (4000K) dimmable LED light kit (model with light only)
- Uses our Quick Connect Plug System to reduce installation time
- Suitable for indoor or enclosed alfresco areas
- Compatible with Brilliant remotes and BrilliantSmart fan controllers

APPLICATIONS

- Bedrooms, lounge and family rooms
- Indoors or enclosed alfresco areas not exposed to the weather



Watch our demonstration video here



PURE WHITE WITH LIGHT



PURE WHITE WITH LIGHT



VECTOR-II 52" AC CEILING FAN WITH LIGHT

TECHNICAL SPECIFICATIONS

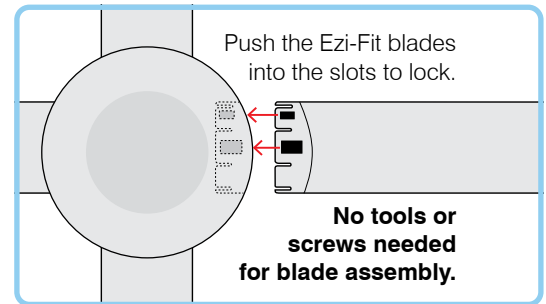
Size	52 inch (1320mm)
Motor Type	AC (Alternate Current)
Operating Voltage	240V / 50Hz
Motor Wattage	50W
Construction	ABS body and canopy
Blade Material	Moulded ABS (x4)
Ceiling install	Hangsure
Blade Pitch	14 degree (effective)
Ceiling Rake	15 degree max
Control	Wall 3 speed with on/off switch (included)
Light Wattage:	18W
Colour Temperature:	4000K
Lumens:	1400lm
Dimmable:	Yes
Other models available	21546/05: 48-inch no light 21547/05: 48-inch with light
Warranty	3 year in-home plus 3 year replacement (6-Year) <i>*Limited warranty for wall controller, remote controller and light. Refer to warranty card inside the box for more details.</i>
Standards:	AS/NZS 60335-1 AS/NZS 60335-2-80 AS/NZS 60598-1 AS/NZS 60598-2-1
Patent:	2018201157 (pending)

INSTALLATION

Must be installed by a licensed electrician

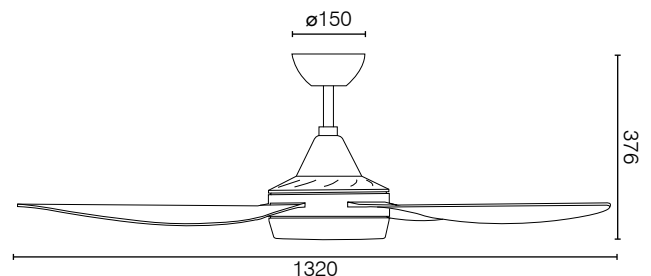
ACCESSORIES (sold separately)



Extension Rod with loom kits, 900mm x Ø21mm:	100550/05 white, 100550/06 black
Remote Kits	99999 Basic 99222 LCD Display 99111 Smart WiFi



AIR MOVEMENT:

SPEED	LOW	MED	HIGH
RPM	111	155	214
Power	15W	26W	50W
Airflow	5,049m ³ /h	7,365m ³ /h	10,804m ³ /h



	MODEL	COLOUR	DESCRIPTION	BOX SIZE	GROSS WEIGHT	BOX QTY	BARCODE/TUN
RETAIL BOX	21549/05	Pure White	Vector-II 52 AC Fan with Light	W591 x H318 x D288 mm	6.9 kg	1 pc	 9 312641 215493 >
RETAIL BOX	21549/06	Matt Black	Vector-II 52 AC Fan & Light	W591 x H318 x D288 mm	6.9 kg	1 pc	 9 312641 218043 >